



Johns Hopkins All Children's Hospital Pediatric Hematology-Oncology Fellowship Program

Year 1

Rotation	Inpatient	Outpatient	HSCT	PNO	ELEC	VACA
Number of Blocks	6	3	1	1	1	(4 wks)

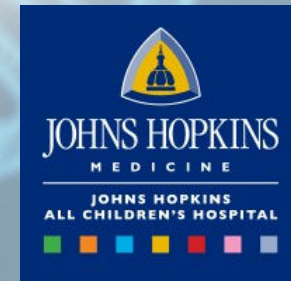
- Staffed by **27 physicians** and **23 advanced practice providers**
- > 150 new cancer diagnoses annually
- >1500 patients with sickle cell disease, hemophilia, thromboembolism, bone marrow failure, vascular anomalies, histiocytosis, and general hematology are cared for annually
- PGY-7 fellowship programs in **Neuro-oncology** and **Bone Marrow Transplantation and Cellular Therapy**
- **Gene therapy** initiated in FY25
- Located in the historic downtown area of St. Petersburg, Florida, minutes away from **white sand beaches**, watersports, thriving arts scene including the Salvador Dalí Museum, unique dining experiences, theme parks (Busch Gardens and Adventure Island), nature and wildlife preserves, professional and recreational sports teams, and more!

On-call schedule: Night call is taken from home. Occasionally fellows may come in for newly diagnosed or extremely ill patients. *Your night and weekend calls will be fully supported by a fun team of in-house HO attending physicians@!*

Fellowship Years 2/3: Physician-investigator training. Fellows will learn how to conduct high quality clinical, translational and/or laboratory-based research and will lead educational activities.

Academic Activities: Enjoy an introductory bootcamp, a longitudinal *Fellows Core Curriculum* covering leadership, wellness, and finance, plus *pathology didactics* that travel from peripheral smears to chromosomes to Howell-Jolly bodies.

Get involved through council membership and flex your skills with teaching and quality improvement projects in a learning community where pediatric care, academic curiosity, and thoughtful mentorship go hand in hand!



University of Minnesota Pediatric Hematology/Oncology Fellowship

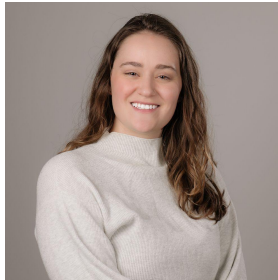
Alex Boucher, MD
bouch070@umn.edu
Program Director



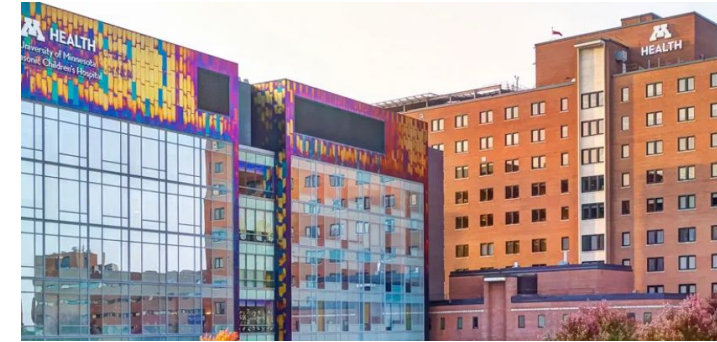
Clay Hoerig
choerig@umn.edu
Associate Program Director



Sid Clarke
clar2258@umn.edu
Program Administrator



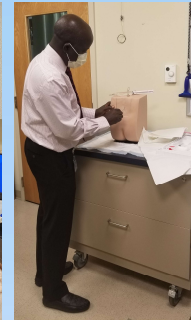
- MHealth Fairview University of Minnesota Masonic Children's Hospital - Primary training site offers broad exposure to the entire spectrum of hematology/oncology and blood and marrow transplantation and cellular therapy in pediatrics.
- The Children's Hospital and Clinics of Minnesota Minneapolis site offers a focus on hematology patients during a 1 month rotation and continuity care clinic.
- There is a full complement of educational offerings including departmental grand rounds, morning report, rotating weekly educational talks, and weekly didactics.
- We offer dedicated mentorship from our large faculty with variety of expertise in clinical, research, laboratory, quality and safety, and education areas.
- We provide 15 blocks of clinical work and 24 blocks of protected time for hypothesis-driven research.



Penn State Health Golisano Children's Hospital Pediatric Hematology Oncology Fellowship Program

Program Highlights:

- 2 fellows per year
- 17 clinical faculty
- 7 basic science-translational research faculty
- 200+ new oncology patients per year
- Broad exposure to hematology patients with dedicated sickle cell and hemophilia clinics
- Pediatric oncology is supported by one of the largest student-run U.S. philanthropies THON, by Mini-THON, and by Four Diamonds
- Member of multiple consortia including the Children's Oncology Group and Beat Childhood Cancer Research Consortium



Our Mission:

The principal goal of the Pediatric Hematology/Oncology Fellowship at Penn State Health Children's Hospital is to train fellows to become outstanding, independent physicians or physician-scientists and prepare them for an academic career incorporating clinical care, research and education. The first year of the program consists of 13 four-week clinically-focused blocks. The second and third years focus on research training and scholarly activities. Fellows pursue a basic laboratory, translational laboratory or clinical research track to accomplish their scholarly activities. All fellows complete a core scholarly curriculum regardless of their research track. In addition, fellows maintain a weekly, half-day continuity clinic, which is supervised by a longitudinal clinical mentor. Fellows are also expected to participate in quality improvement projects throughout their entire training

Our Location:

Central Pennsylvania is known for its natural beauty, low cost of living and diverse experiences. Just like the surrounding area, Penn State College of Medicine offers an inclusive and welcoming environment toward people from all walks of life. While you're here, you're part of a community working to impact and improve Central PA, making this region a happy and healthy place to live.

Why not train in the sweetest place on Earth?

Contact Information:

Program Director: Betsy Finch, efinch1@pennstatehealth.psu.edu
 Program Coordinator: Beth Schwarz, bschwarz@pennstatehealth.psu.edu
 Our website: <https://residency.med.psu.edu/programs/pediatric-hematology-oncology-fellowship/>



Where's Hershey?

Hershey is next door to the state capital, Harrisburg, historic Lancaster and Gettysburg. And it's easy to get to some of the Mid-Atlantic's largest metros.

- Philadelphia (1.5 hours)
- Baltimore (1.5 hours)
- New York City (2.5 hours)
- Washington, D.C. (2.5 hours)
- Pittsburgh (3.5 hours)



PennState Health
Golisano Children's Hospital

Children's National Hospital Center for Cancer & Blood Disorders



Program Directors

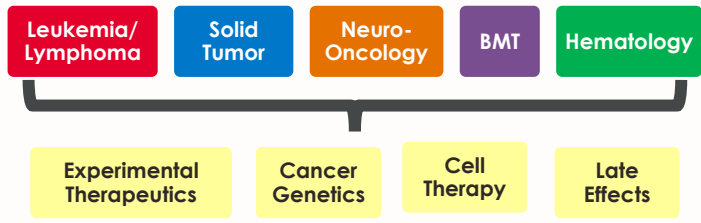


Holly Meany, MD
Program Director



Liny John, MD
Associate Program Director

Clinical Center



Oncology: Over 300 new oncology diagnoses a year, over 100 active therapeutic protocols, and early phase clinical trial center

Hematology: One of the largest sickle cell disease (SCD) populations and first to provide gene therapy for pediatric SCD

Washington DC

- Vibrant, diverse city
- Rich history
- Museums, music, theater
- Easy public transportation
- Close to mountains and beaches



Fellowship

Clinical

Service: 1st year - 8 months inpatient, 4 months outpatient

Clinic: One half day of protected clinic time per week for primary continuity patients

Call: 1st years split weekend calls with senior fellow daytime coverage; 2nd/3rd years take weeknight calls

Additional Fellowships: Subspecialty fellowships available in Neuro-Oncology and BMT/Cellular Therapy

Research

Protected research time in 2nd and 3rd year

Sites include Children's National, National Institutes of Health, George Washington, Virginia Tech

Funding available for advanced degrees

Grant opportunities available including T32 training grant

Curriculum

Weekly didactic lectures by faculty

Tumor boards in leukemia/lymphoma, solid tumor, neuro-oncology, hematology, and BMT

Interactive senior fellow sessions with case-based learning

Ample opportunities for medical education of residents and medical students

Learn More

Instagram

Video





PEDIATRIC HEMATOLOGY-ONCOLOGY FELLOWSHIP



TRAIN IN A QUATERNARY CARE CHILDREN'S HOSPITAL

- Among the best children's hospitals in the nation, and ranked #1 in Texas
- Located in Houston, the most diverse city in the US, and in the Texas Medical Center, the largest medical complex in the world



LEARN FROM LEADERS IN THE FIELD

- Faculty with clinical and research expertise committed to fellow education and mentorship
- Training in writing peer-reviewed grants
- Commitment to career advancement and developing leaders in the field

Learn more!



JOIN OUR PROGRAM

- 6 fellow positions per year
- High acuity and high volume clinical exposure in hematology, oncology, and stem cell transplantation
- Opportunities for laboratory and clinical research and collaborations across multiple institutions
- Dedicated to recruiting and retaining outstanding faculty and trainees from a wide range of backgrounds, providing a supportive learning environment for all

Cincinnati Children's Hospital Medical Center Cancer and Blood Diseases Institute

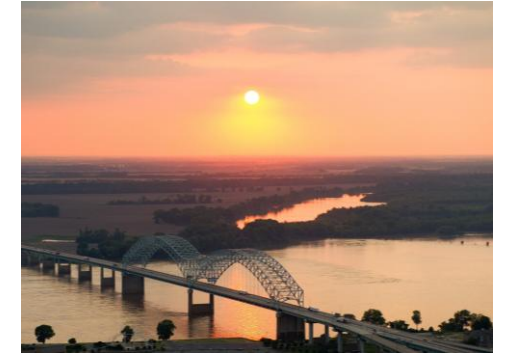


- Large academic pediatric hospital
 - Ranked #1 in Pediatric Cancer for the last 3 years
 - Ranked #2 for Department of Pediatrics
 - Ranked #2 in NIH funding among all Children's Hospitals
- World renowned leaders in Hematology, Oncology, and Bone Marrow Transplant/Immunodeficiency
- Large national and international referral base
- 5 pediatric hematology/oncology fellows/year
- Large clinical trials infrastructure
- Over 100 faculty with a broad range of discovery science, translational, and clinical research interests.
- CCHMC is ranked #5 in America's Best Employers for Healthcare Professionals by Forbes.



Cincinnati is an outstanding place to live: a vibrant midsize city with welcoming neighborhoods for young professionals and families. It offers an excellent arts scene, abundant outdoor recreation, professional sports, excellent restaurants, and a world-class zoo - all with a low cost of living and easy commutes.

St. Jude Children's Research Hospital Fellowship Program



Program numbers

- Current fellows: 18
- New fellows each year: 6

Director

Hiroto Inaba, MD, PhD
hiroto.inaba@stjude.org

Associate Director

Nidhi Bhatt, MD
nidhi.bhatt@stjude.org

Program Manager

Rachel Bernstein, EdS
rachel.bernstein@stjude.org

Program Coordinator

Justin Scoggins
justin.scoggins@stjude.org

Personalized experience

- Highly flexible 3-year program tailored to individual needs
- Training future leaders in clinical, translational and basic research
- Financial support available for advanced degrees and conferences

A place of firsts

- World leader in pediatric catastrophic disease through research and treatment
- Exceptional community devoted to “finding cures and saving children”
- Strategic institutional initiative devoting resources to clinical trainees

Committed leadership

- Dedicated to providing support and resources for fellows

Unparalleled environment

- Unique and large patient population
- World-class faculty and facilities
- Wide range of educational activities
- Collaborative culture

Abundant opportunities

- Physician-scientist instructor program
- Institutional T32, K12 fellowships
- Subspecialty fellowships
 - Cancer Predisposition
 - Cancer Survivorship
 - Global Pediatric Medicine
 - Hospice and Palliative Medicine
 - Leukemia/Lymphoma
 - Neuro-Oncology
 - Onco-Critical Care
 - Sickle Cell Disease
 - Solid Tumor
 - Transplant and Cellular Therapy

About Memphis

- Rich in culture and opportunity
- Beautiful parks, running trails, and outdoor spaces
- Affordable
- World-class museums, parks, music, dining, and entertainment

“We are committed to building the best fellowship program in the world.”

Drs. Inaba and Bhatt





Pediatric Hematology/Oncology Fellowship

Come wave with us!

Where You'll Learn

- Iowa's only pediatric academic medical center and BMT program
- University of Iowa Dance Marathon Pediatric Cancer and Blood Disorders Center – opened in 2017
- A fellow-independent program – work alongside experienced faculty, APPs, and other staff dedicated to your education
- Medium-sized patient volume
- All-around excellence in clinical care – ranked in 6 pediatric specialties (including cancer!)
- Committed to research – ranked #27 nationally for NIH funding
- Member of POETIC and CBTN

Where You'll Live

- Iowa City – an affordable, Midwest college town
- Typical commute time <20 min
- Bike-friendly with ample trails and parks
- UNESCO City of Literature
- Lots of fine arts and community events – many of them free!
- Home to US News & World Report ranked public schools
- Within 3-5 hours from most Midwestern cities without the daily traffic!
- A supportive community – you can be part of the greatest tradition in college sports

Contact Us!

Program Director: Jessica Zimmerman, MD, MS

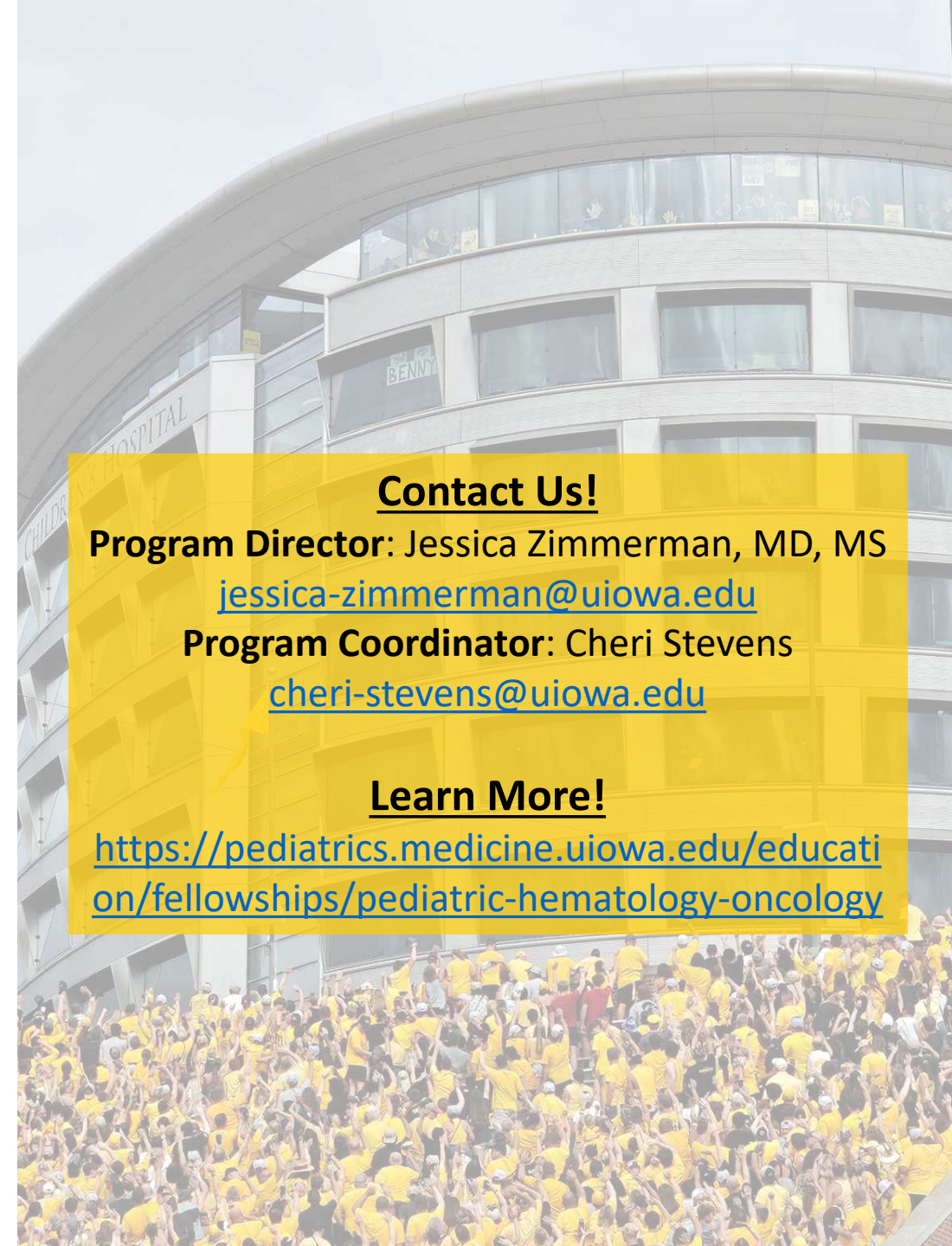
jessica-zimmerman@uiowa.edu

Program Coordinator: Cheri Stevens

cheri-stevens@uiowa.edu

Learn More!

<https://pediatrics.medicine.uiowa.edu/education/fellowships/pediatric-hematology-oncology>



Hematology Oncology Fellowship



*Melissa Frei-Jones, MD
Program Director*



Nicole Meyer
Program Coordinator

PROGRAM HIGHLIGHTS

Clinical Excellence

- Cancer Genetics Program
- Adolescent and Young Adult Oncology Program
- Childhood Cancer Survivorship Program
- South Texas Hemophilia and Thrombosis Treatment Center
- South Texas Sickle Cell and Thalassemia Program
- Comprehensive Vascular Anomaly Program

Education and Outreach Excellence

- Rio Grand Valley Hemophilia Outreach Clinic
- Southeast Asia Pediatric Hematology-Oncology Program

Research Excellence

- Greehey Children's Cancer Research Institute
- Children's Oncology Group
- NCI Community Oncology Research Program
- POETIC Pediatric Phase 1

Fellow Support

- Greehey Endowment for Pediatric Hematology-Oncology Fellows
- Najim Scholars Program

PROGRAM GOALS

To develop physicians who become:

- Proficient in the evidence-based management of children, adolescents and young adults with hematology and oncology disorders
- High quality basic scientists, clinical investigators or clinical educators
- Outstanding clinicians with a lifelong commitment to patient care and community involvement

OUR FAMILY

- 80-100 new oncology diagnoses annually
- 1-2 fellow/yr
- 11 Clinical and research division faculty
- 1 Nurse Practitioner
- 2 Genetic Counselors
- 2 Psychologists
- 4 Social Workers
- 1 Sickle Cell Nurse
- 2 Hemophilia Nurses
- 2 Physical Therapists
- 6 Research Staff

 #UTHealthSA

 Uthealthgme

 UTHealthSAPediatrics

CONTACT

Email: freiJones@uthscsa.edu

Website:

<https://lsom.uthscsa.edu/pediatrics/divisions/hematology-oncology/education/pediatric-hematology-oncology-fellowship/>



Aflac Cancer & Blood Disorders Center Pediatric Hematology/Oncology Fellowship



EMORY UNIVERSITY

Program Highlights:

- Premier program in the Southeast
- Robust patient volumes + equal balance of hematology & oncology
- Clinical, translational, & basic research all equally possible and valued
 - Collaborations with Georgia Tech
- Opportunities for additional training
 - 4th year for research, neuro-oncology, BMT, survivorship, etc
 - Combined med/peds fellowship
 - Advanced degrees during fellowship including MSCR and PhD

Size Matters:

- 6 fellows/year
- >130 PHO faculty
- ~500 new oncology dx/yr
- Largest hematology program in the country
- State-of-the-art new hospital opened in **2024**

Program Culture:

- Family feel despite size
- Fellows treated as colleagues
- Constantly evolving based on fellow feedback

Atlanta:

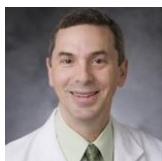
- Vibrant, progressive city
- Something for everyone: food, sports, museums, music
- “City within a forest”



Program Leadership:



Katie Sutton, MD
Director



Dan Wechsler, MD, PhD
Co-Director



Neha Desai, DO
Associate Director



Gary Woods, MD
Associate Director



Gary Lindsay
Sr. Program Coordinator

- Saarah Hussain, Program Director
- Julie Krystal & Anshul Vagreacha, APDs
- About 300 new oncology diagnoses/year
- Programs in solid tumors, early phase clinical trials, CAR-T, gene therapy, Sickle Cell Disease, Hemophilia Treatment Center- **YOU WILL SEE IT ALL!**



Pediatric Hematology- Oncology & Cellular Therapy

- 3 fellows/year
- First year clinical: time on each service, outpatient, electives
- Flexible 2nd and 3rd years based on fellow interest: lab, clinical research, MPH, Med Ed, etc. Funding for advanced degrees.
- Emphasis on expertise development and academic career



Follow us on Insta!
ccmcpedshemeonc



Program Culture: We focus on fostering a **robust clinical and academic learning** environment based on a foundation of support, diversity, inclusion and education.



Geographic area/Culture: We serve **THE most diverse population in the country** and take care of patients from every culture and background imaginable. This brings an incredible depth to our practice, and our fellows learn firsthand how to address barriers to care in a diverse environment and ensure all patients get the best care.

Institution Culture: Northwell is the largest health system in New York. Our patients have access to incredible care, and we get to work in a system that values diversity, wellness, and celebrates all that we do.



Utah Pediatric Hematology/Oncology Fellowship



HEALTH
UNIVERSITY OF UTAH

Program Highlights

- Largest geographic referral area in United States
- New clinic, infusion area and inpatient space opened July 2022
- Over 200 new oncology patients annually
- Hematology referral center for 5 states
- 30 faculty with expertise in BMT, cellular therapy, palliative care, neuro-onc, hematology
- Dedicated survivorship and cancer predisposition clinic
- Labs specializing in novel CAR-T therapy, checkpoint inhibition, new drug development and oncofertility

Fellowship Highlights

- 2 fellows per year; 6 fellows total
- 100% board pass rate
- Tuition support for masters in clinical investigation, public health and other advanced degrees
- Annual fellow winter retreat and bimonthly wellness dinners
- Support for conference attendance including ASPHO for incoming fellows
- Myriad of basic science, translational and clinical research opportunities
- Support for additional research years for interested fellows
- Monthly Fellow Business meetings drive program change

Utah and Salt Lake City

- One of the most livable cities in the United States
- 7 ski resorts within 45 minutes
- Easy access to world class outdoor activities including 8 national parks within 5 hours
- Host of 2034 Winter Olympics, Red Butte outdoor concerts and countless other cultural activities
- Family friendly with great public schools
- Award-winning restaurants and breweries

Program Leadership



Mike Pulsipher, MD
Division Chief



Jen McNeer, MD
Medical Director



Billy Thomsen, MD
Program Director



Kellee Parker, DO
Associate Director



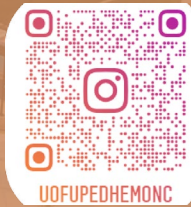
Joann Chavis
Coordinator



For More Information

<https://medicine.utah.edu/pediatrics/hematology-oncology/fellowship>

William.thomsen@hsc.utah.edu Kellee.Parker@hsc.utah.edu



UOFUPEDHEMONG



Yale Pediatric Hematology and Oncology Fellowship

PROGRAM OVERVIEW

- 2 fellows/year
- 19 faculty members
- 8 advanced practice providers
- ~100 new diagnoses per year



Program Director: Farzana Pashankar, MD
Email: farzana.pashankar@yale.edu

FELLOW SCHEDULE

- First Year
 - 24 weeks of inpatient
 - 8 weeks of BMT
 - 4 weeks of research, rad/onc, lab medicine
 - 1 day of clinic/week
- Second and Third Year
 - 80% protected research time
 - ½ day of clinic/week

JOIN OUR PROGRAM!

- 2 fellows per year
- Robust, collaborative clinical training with national experts in the field of solid tumor and neuro-oncology, non-malignant and malignant hematology, bone marrow transplant, cellular therapies, sickle cell, and bleeding/clotting disorders
- Our fellows have a myriad of research opportunities in clinical, basic, and translational research
- Tuition support for Master of Health Sciences with focus on clinical research, basic research, or medical education
- Diverse patient population with varying health related social needs
- Supportive community that values diversity and inclusion, providing a nurturing environment for both professional and personal growth.

LIFE IN NEW HAVEN

- Experience life in New Haven, a vibrant city with a rich academic atmosphere, home to numerous theaters, museums, and cultural festivals, complemented by Yale University's historic campus and intellectual community.
- Convenient access to both New York City and Boston, offering expansive career, cultural, and recreational opportunities within a short train ride



Follow us on Instagram! @yalepedshemeonc



www.icre.pitt.edu

City of Pittsburgh

- **Vibrant, innovative city**
- City of neighborhoods
- Tons of green spaces and public parks
- Job opportunities for significant others

Program Culture

- Positive, friendly and fun
- Progressive and supportive
- **Committed faculty who provide expertise, mentorship, and guidance**

Clinical Experience

- Comprehensive clinical training in all areas of peds heme/onc
- Wide breadth and depth of clinical exposure in heme, oncology, and BMT
- **Flexibility in tailoring clinical experience based on career interests**

Research

- Fellows conduct state-of-the-art research across the institution
- Dedicated time to explore research opportunities during first year
- Option to obtain a **Masters degree** through ICRE in clinical research or medical education

Career

- **Focus on career development from day one**
- Grant support available for the transition from fellow to faculty
- Our fellows become amazing clinicians, successful scholars, and leaders in the field

Vanderbilt Pediatric Hematology/Oncology/SCT

- **Division Information**

- Division Director: Debra Friedman, MD
- Fellowship PD: Richard Ho, MD
- Fellowship APD: Scott Borinstein, MD, PhD
- Fellowship PC: Christine Rossney
- 21 Faculty Members
- 16 Outpatient/Inpatient APPs
- 9 Fellows (3 fellows/year)

- **Clinical/Research Opportunities**

- Robust clinical volumes with comprehensive exposure to all facets of oncology/hematology/stem cell transplant
- 343 bed hospital with a dedicated 31 bed PHO/SCT unit
- >250 new oncology patients yearly
- Vanderbilt-Meharry Center of Excellence in Sickle Cell Disease
- Comprehensive Hemophilia Treatment Center
- Vanderbilt Ingram Cancer Center (NCI Comprehensive Cancer Center)
- Opportunity for advanced degrees: MPH, MSACI



- **Program Culture**

- Collegial, collaborative, supportive, team-oriented
- Personalized fellowship training - track-based
- Dedicated faculty committed to education/training, research/scholarly activities, and mentorship
- Focused on fostering a career in academic medicine

- **Institution Culture**

- Focused on people, service, quality, growth and innovation
- #1 Children's Hospital in Tennessee (USNWR)
- Tied #1 Children's Hospital in Southeast (USNWR)
- Vanderbilt Ingram Cancer Center – Top 10 in funding (NCI)
- VU School of Medicine – Top 10 in funding (NIH)
- Department of Pediatrics – #1 in NIH funding (Blue Ridge)
- Academic enterprise on single campus (VUMC)

- **Geographic area/culture**

- Located in Nashville, Tennessee
- Metropolitan population: ~2 million
- Cultural, ethnic, and racial diversity
- AKA Music City, USA but with all amenities you desire: music, culture, arts, food, sports, and retail
- Corporate presence: Amazon, Oracle, Nissan, Bridgestone, Starbucks
- Central location with easy access to east coast, west coast, and all in between

Stanford Pediatric Hematology/Oncology Fellowship Program



Stanford | MEDICINE
Pediatric Hematology, Oncology,
Stem Cell Transplantation
& Regenerative Medicine

Our fellowship program provides rigorous training in research and clinical care. Fellows learn from our expert faculty and practice at Lucile Packard Children's Hospital, ranked by US News and World Report as one of the nation's best pediatric hospitals.

Clinical work includes rotations in the fields of pediatric hematology, oncology, immunotherapy, stem cell transplantation, and neuro-oncology. Fellows may select research projects from any of these areas. Trainees engage with Stanford's numerous clinical trials, aimed at finding new diagnostic, prevention, and treatment strategies.

<https://med.stanford.edu/phosctrm/education/fellowship.html>



Ami Shah, MD
Program Director
ashah5@stanford.edu



Lianna Marks, MD
Associate Program Director
marks1@stanford.edu



Anju Goyal, MD
Associate Program Director
agoyal3@stanford.edu



Gretchen Shawver
Fellowship Administrator
gshawver@stanford.edu

PROGRAM CULTURE

A diverse and busy program that sees over 200 new oncology patients, over 420 new hematology patients and 60 stem cell transplant patients each year, making Stanford one of the busiest programs in Northern California.

INSTITUTIONAL CULTURE

Fellowship Programs at Stanford Children's Health are designed to provide outstanding training to prepare our fellows to excel as subspecialty clinicians, researchers, teachers, and advocates, and become leaders within the field of pediatrics. The Department of Pediatrics at Stanford University currently trains over 100 fellows in 24 subspecialty training programs.

GEOGRAPHIC CULTURE

Bay Area Living - Year-round use of parks for hiking, biking, and outdoor activities. Vibrant wine and food scene. World-class entertainment and arts.

Hematology and Oncology Fellowship



Department of Pediatrics
UNIVERSITY OF WISCONSIN
SCHOOL OF MEDICINE AND PUBLIC HEALTH



Chrissy Amend, MD
Program Director



Cathy Lee-Miller, MD
Associate Program Director



Follow to learn more!
@WiscPedsRes



About the Program

The Pediatric Hematology/Oncology Fellowship program at the University of Wisconsin is a close-knit and collaborative program that emphasizes strong clinical experiences and robust research opportunities. In addition to being a member of several national and international research consortia, we also boast several homegrown investigator-initiated trials for relapsed cancers. Our training program offers balanced experience in hematology, oncology, immunotherapy and bone marrow transplant all with a spirit of mentorship and mutual respect.

Institutional Culture

Our GME programs are consistently recognized for their ongoing strength and innovation, and we understand the power and value of diversity. We've developed programs and protocols within our GME programs to ensure we are moving forward and building inclusive work and health care environments.

Geographic Culture

A vibrant, picturesque city with a population of nearly 275,000, Madison is the state capital and the home of the University of Wisconsin. While boasting many big city amenities, Madison is an easy city in which to live. Commutes are short, the cost of living reasonable, and it's a great place to work, have fun, and raise a family.

Pediatric Hematology, Oncology, BMT Fellowship



Our Fellowship Program Directors

Melissa Rose, DO | Keri Streby, MD, Amanda Sankar, MD

36

Heme/Onc/BMT Faculty with Disease Team specific APNs, RN Navigators and Psychosocial support

4

PHO fellows per year

4

4th year fellowship training programs



Columbus, Ohio | Geographic/Area Culture

- Midwest, the 15th largest city in U.S.
- Food & Arts/Entertainment
- The "Great Outdoors"
- Professional and collegiate sports

1st Year
10-12 weeks each of Hematology and Oncology
8 weeks BMT

2nd Year
11 months protected research

3rd Year
4 weeks clinical service



Program Culture

Inclusive, supportive, flexible | Fellow independent
Invested in trainees | Wellness

Institution Culture

- "Zero Hero"
- Growth and innovation
- Community dedication
- Forbes - Best Large Employers and #1 for Best Employers for Women

Bench, clinical, educational, quality improvement and translational research opportunities

Ask us about "Buzz sessions," for fellow-driven program improvement!

Advanced degrees offered/funded

Fellowship Program Coordinator
Tami Davis

pedhemoncmtfellowships@nationwidechildrens.org



NATIONWIDE CHILDREN'S



Pediatric Hematology Oncology Fellowship



**BASIC SCIENCE RESEARCH
 OPPORTUNITIES:**

- UCSD Moores Cancer Center
- Sanford Burnham Research
- Scripps Research Institute
- Rady Genomic Institute
- Salk Institute

- CA Institute for Regenerative Medicine
- La Jolla Institute for Immunology
- Masters in Clinical Research
- Health Disparities Research
- Medical Education Research



Rady Children's is the **largest children's hospital in California** and a top 10 Best Children's Hospital in the nation.

With our large catchment area, we provide a wide breadth of clinical experiences (in addition to solid tumor, transplant, leukemia, and hematology):

- Transplant
- CAR-T
- Gene Therapy
- Cancer Genetics
- AYA
- Hematology/Gynecology
- Global Health Program
- Medical Education Track
- Proton/Photon Therapy
- Neuro-oncology
- Bone Marrow Failure
- Hemostasis Thrombosis
- Hemoglobinopathies





Cleveland Clinic Children's

Pediatric Hematology & Oncology Fellowship



Program Leadership

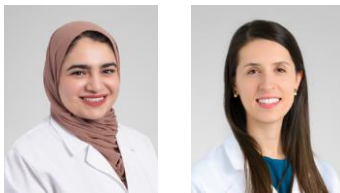
PD: Stacey Zahler, DO, MS

APD: Seth Rotz, MD

PC: Teresa Gerbasi, PC

Chief Fellows: Sara Awad, MD

Rachel Zeno, MD



Program Highlights

- 22 Faculty, 2 Fellows/year
- Clinical volume:
 - 120+ new onc dx per year
 - 100+ consults per year
 - 15+ TCTs per year
 - 260+ pts with HbSS
 - Wide variety of non-malignant hematologic conditions
- **Abundant** clinical, translational, or basic **research opportunities**
- Dedicated, invested faculty
- Family feel, attention to wellness

Education

- Myriad of educational support and learning opportunities
- Over 10 tumor board/case conferences
- 3 separate grand rounds lecture series
- Weekly fellow lecture series
- Biweekly board review
- Biweekly protocol review
- Chemotherapy education
- Simulation education

Division of PHO & BMT

- Clinical Teams
 - Leukemia/Lymphoma
 - Transplant & Cellular Therapy
 - Solid Tumor
 - Neuro-Oncology
 - Classical Hematology
 - Cancer Genetics
- Multi-disciplinary clinics
 - Bone marrow failure
 - Vascular malformations
 - Sickle Cell Clinic
 - Immunohematology
 - High Five Survivorship
- Clinical pharmacists
- Robust psychosocial team
- Pediatric Palliative Care
- We have **FUN in CLE!**



Program Distinctions

Ranked among the top 25 pediatric cancer programs in the nation by *U.S. News & World Report*

Access to clinical trials through CureWorks, the Children's Oncology Phase 1 Consortium and the Pacific Pediatric Neuro-Oncology Consortium

Offer pediatric stem cell transplant, CAR-T cell therapy and immune effector cell therapy for pediatric patients



One of the few pediatric cancer programs in the region to offer precision genomics to treat children with relapsed or aggressive cancer

A vital component of the care provided by Indiana's only National Cancer Institute-designated Comprehensive Cancer Center, Indiana University Simon Cancer Center



Riley Hospital for Children
Indiana University Health



SCHOOL OF MEDICINE
INDIANA UNIVERSITY

University of Nebraska Medical Center Pediatric Hematology Oncology Fellowship



Our Fellowship

- Our program will provide you with the clinical experience to prepare for all areas of pediatric hematology and oncology, while empowering you with research opportunities and the ability to shape your educational journey to explore your specific interests.
- Strong research mentorship. Innovative research across our institutions is available for basic science, translational, clinical, education, public health, etc. in collaboration with [The Child Health Research Institute](#) and [The Pediatric Cancer Research Group](#).
- Excellent [Benefits Package](#).
- In-depth [Curriculum](#).
- [Omaha](#) is a very affordable place to train with something for everyone

Children's Nebraska

- 225-bed free-standing pediatric hospital affiliated with UNMC
 - 26-bed PICU
 - 32-bed Cardiac Care Unit
 - Pediatric Cardiac Transplant Center
 - 52-private bed Level IV NICU

UNMC

- 38-private bed Level III NICU
- 8-bed PICU
- 16-bed Pediatric Ward Unit
- Pediatric BMT unit

Training Breakdown

Year One

- Inpatient service at Children's Nebraska (6 months total)
- **Optional** one-month Transplant elective in Denver, Colorado
- Hematology Rotation – primarily outpatient, including rotation through our multidisciplinary Sickle cell, Comprehensive bleeding disorder, and Infant hemoglobinopathy clinics (4 weeks)
- Neuro-Oncology Rotation - primarily outpatient, including rotating through our multidisciplinary Neuro-Onc and Neurofibromatosis clinics (4 weeks)
- Continuity clinic – patients are scheduled with you as their primary hematologist/oncologist (one half day each week)
- Radiation-Oncology (2 weeks)
- Palliative care (2 weeks)
- Blood bank and pathology (4 weeks total)
- Research elective (4 weeks)

Years Two and Three

- Majority of time is protected for scholarly work
- Continuity clinic – continues from the first year, but transitions to one full day every other week.
- 2nd clinic experience, chosen by each fellow. Often a half day every other week. This is meant to support the fellow's overall career goals and can include a clinic with a focused mentor (e.g., solid tumor focus), additional rotation through our many multidisciplinary clinics, additional inpatient time, etc.
- Inpatient service at Children's Nebraska (4 weeks per year)

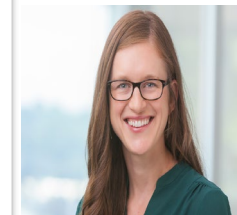
Call Schedule

- Year One - 2 nights a week, 1 weekend per month
- Year Two - 1 night per week, 1 weekend per month
- Year three - 1 night every other week, 1 weekend per month

Learn more about our Program and Omaha



Our Website



Melissa Acquazzino, MD
Program Director
macquazzino@childrensnebraska.org



Miranda Downing, C-TAGME
Program Coordinator
Miranda.downing@unmc.edu

Follow us on Instagram!!
[#unmcpedshofellows](#)



University of Nebraska
Medical Center

Children's
NEBRASKA



Showers Family Center for Childhood Cancer and Blood Disorders



Heme Onc Faculty

Stephanie Savelli, MD – **Fellowship Program Director**, Director Survivorship Program/Leukemia and Lymphoma

Erin Wright, MD – Associate Program Director, Director of Neuro-Oncology

Prasad Bodas, MD- Director of Sickle Cell

Nicole Kendel, MD- HTC Director

Megan Sampson, MD- Director BMT

Vanisha Patel, MD – Director Fertility Preservation Program, Interim Division Director

Hannah Elkus, MD

Lauren Draper, MD, Director of AYA

Sarah Rush, MD, CMIO

Sarah Bowman – new hematology hire, will begin August 2027

Hope Ball, PhD: NEOMED Research Scientist

Fellowship Goal: Train well rounded, excellent clinicians with the tools to perform quality improvement work and research upon completion of fellowship.

We have graduated 11 fellows with 100% first time board passage rate and all are currently employed and practicing in the field of Peds Heme-Onc.

ABOUT AKRON CHILDRENS

- Largest pediatric provider and hematology/oncology program in NE Ohio with 100 new cancer diagnoses annually
- Free standing children's hospital with 78 associated pediatric offices and over 9000 inpatient admissions annually
- Active members of the Children's Oncology Group, ASPHO, Regional Sickle Cell center as designated by Ohio Dept of Health, one of the largest Pediatric Hemostasis and Thrombosis Centers in the country
- Perform autologous and allogeneic BMT
- Comprehensive clinics for Neurofibromatosis, Neuro-Oncology, Survivorship, Sickle Cell, Vascular Anomalies, Hemostasis and Thrombosis, vWD clinic and Heavy Menstrual Bleeding Clinic
- Pediatric Teaching Hospital Cancer Program verified by the American College of Surgeons Commission on Cancer with opportunities for medical student and resident education

About Akron Ohio

5th largest city in Ohio and only a 40-minute drive south of Cleveland

Parks cover over 6000 acres in the city and nearby lakes/reservoirs as well as ski resorts provide ample opportunity for outdoor activities including running, biking, and hiking.

Access to multiple sporting events with local colleges as well as Cleveland Guardians (MLB), Cavaliers (NBA), Browns (NFL), Monsters (Minor league Hockey). As well as Akron Rubber Ducks Minor league baseball right across from the hospital.

Ever expanding foodie scene with multiple new restaurants as well as multiple great local breweries

Very affordable with great suburban and urban housing options close to the hospital

University of Colorado Pediatric Hematology/Oncology Fellowship

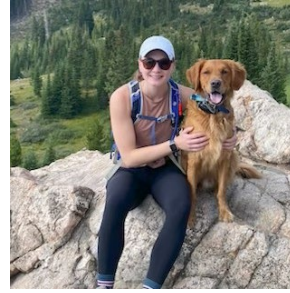
Program Leadership



Michael Edwards, MD, MPH
(Rising) Program Director



Tim Garrington, MD
Program Director



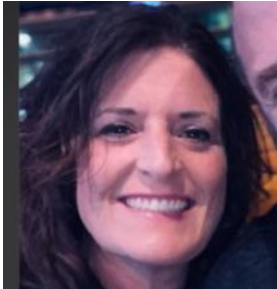
Taylor Wellock
(rising) Chief Fellow



Hesham Eissa, MD
Associate Director (BMT)



Adam Green, MD
Associate Director (Neuro-Onc)



Gentry Greeno
Program Coordinator



Beth Warren, MD, MSCS
Associate Director
(Hematology)



Amanda Winters, MD, PhD
Associate Director
(Oncology)



Program Details

- 4 fellows/year
- 3-year program with options for 4th year of sub-specialty training (BMT, Hematology, Experimental Therapeutics, Transfusion Medicine, Neuro-Onc)
- 1st year: Twelve 4-week rotations, including Inpatient Oncology, Inpatient Hematology/Consults, BMT, Outpatient Hematology, and Outpatient Neuro-Onc
- 1st year: 2-week Orientation and 2-week "Winterlude" in February
- 2nd-3rd years: Focus on scholarly activity
- Yearly fall research retreat in mountains



For more information:

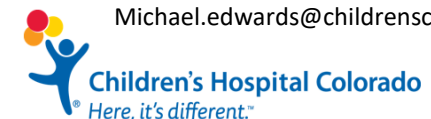
<https://medschool.cuanschutz.edu/pediatrics/sections/hematology-oncology-and-bone-marrow-transplantation/fellowship>

<https://www.childrenscolorado.org/doctors-and-departments/departments/cancer-and-blood-disorders/>

To reach us:

Gentry Greeno (Program coordinator)
Phone: 720-777-1002
Email: gentry.greeno@childrenscolorado.org

Michael Edwards (Program Director)
Michael.edwards@childrenscolorado.org





Pediatric Hematology/Oncology Fellowship Opportunity July 2027

PD: Andrea D. Orsey, MD, MSCE, MS-HPed (AOrsey@connecticutchildrens.org)
PC: Brittany Valentine (BValentine@connecticutchildrens.org)



Official pediatric teaching hospital of



Our Program & Culture

- 3 PHO Fellows
- 14 PHO Faculty
- Outstanding Clinical Care
- State-of-the-art Research Experience
- Personalized Training
- Inclusive & Supportive
- Promotes & Fosters Wellbeing
- Fellow feedback drives change

Educational Conferences

- HemOnc Didactics 2 hs/week
 - Interactive & Engaging
 - Case Discussions
- Fellowship Core 2 hs/month
- Board Review 1 hr/week
- V-SYMPHONY 1 hr/week
- Conferences
 - Solid Tumor Board 2x/month
 - Neuro-Oncology monthly
 - Hematopathology monthly
 - Journal club monthly
 - M&M monthly
 - Palliative Care monthly

Our Curriculum

1st Year

- 28 Weeks Inpatient
- 8 Weeks Outpatient
- 8 Weeks Research
- 4 weeks Laboratory Medicine
- 4 Weeks Elective

2nd Year

- 32 Weeks Research
- 8 Weeks Stem Cell Transplant
- 8 Weeks Outpatient
- 4 weeks Radiation Oncology

3rd Year

- 48 Weeks Research
- 4 Weeks Pre-Attending

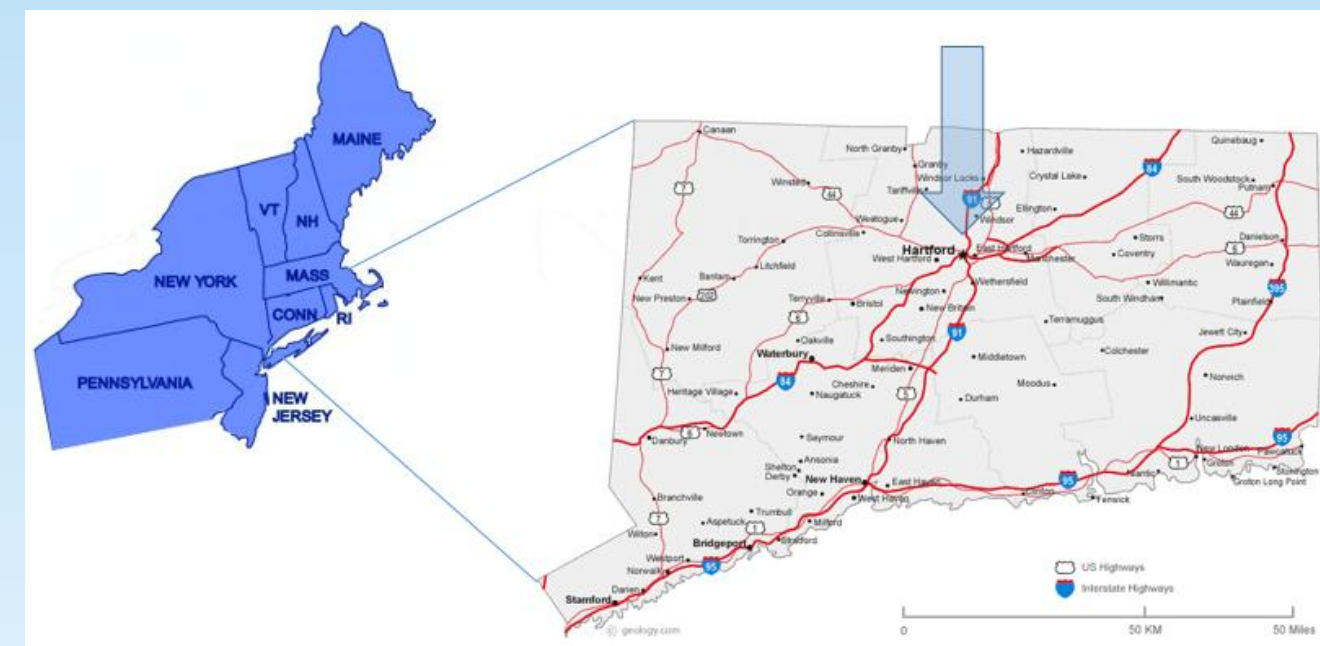
Research Opportunities

- Basic Science, Clinical, Translational
- The Jackson Laboratory
- Advanced QI training
- MSCR Advanced Degree



Life in Connecticut

- Hartford is Connecticut's Capital
 - Dynamic metropolitan area
 - Restaurants, Entertainment, Food & Nature
- Enjoy all 4 seasons in New England
 - Proximity to beach & ski
 - Less than 2 hours to Boston and NYC



Advantages of Our Program

- Fellow Continuity Clinic Weekly
- Diverse Patient Population
- Specialized Programs
 - Hemostasis & Thrombosis
 - Sickle Cell Disease
 - Neuro-oncology
 - Sarcoma
 - Hematologic Malignancy
 - Adolescent & Young Adult Cancer
 - Palliative Care
 - Survivorship
 - Supportive Care
 - Cardio-Oncology
 - Oncofertility
- Stem Cell Transplant Training
 - Boston Children's/Dana-Farber Cancer Institute
 - New unit opening in late 2026!
- Modern, free-standing Children's Hospital opened in 1996
 - 110-130 new oncology diagnoses/year
 - 180 sickle cell/thalassemia patients
 - Hemophilia Treatment Center
 - 24 bed HemOnc Unit
 - 18 bed PICU
 - 6 bed Stem Cell Transplant Unit

The Baylor Pediatric Hematology and Oncology Fellowship Program - San Antonio at CHRISTUS Children's

Our Program

- 7 hematology-oncology attendings, 2 BMT attendings, 3 NPs
- 1 Ped Hem-Onc Fellow per year
- 65 New Oncology patients per year
- 5,000 hem-onc clinic visits per year
- Comprehensive, multi-disciplinary survivorship and cancer genetics clinics
- Clinical and scholarly activity all 3 years
- Focus on learner wellness and personalized curriculum
- Innovative teaching

Our Hospital

- 800,000 sq ft; \$135 million newly renovated space
- 6,507 Inpatient Discharges, 5,357 Surgeries, 94,423 ED visits, 280,341 outpatient clinic visits
- 90 Inpatient beds
- 60 Bed, Level 4 NICU
- ECMO, Transport
- 30 PICU/IMC beds
- 44 Bed ED
- Full-service OB/MFM & Neonatal Model
- Baylor Experience with CHRISTUS Compassion

Our City

- 7th largest city in the U.S.
- Large and growing pediatric population
- Great community, family friendly, low cost of living
- Fun, vibrant cultural scene
- Historic and military importance; tourist site
- Manageable drive to visit Austin, Houston, Dallas, and the Coast
- Networking opportunities with many training programs in the city.



Pediatric Hematology/Oncology and Cellular Therapy Fellowship Program



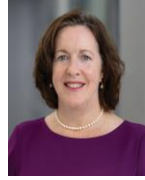
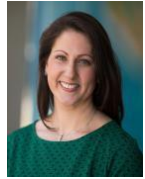
David Loeb, MD PhD
Division Chief



Adit Tal, MD
Program Director



Moriah Rabin, MD
Associate Program Director



Program Highlights

- 2 fellows/year
- >100 new oncology diagnoses each year
- >700 patients in the sickle cell disease (SCD) program
- Hemophilia Treatment Center
- Member of COG, NPCF, & DFCI consortium
- Avg. inpatient census: 20-25 patients
- High volume ambulatory chemotherapy program: >14,000 outpatient visits per year
- Focus on clinical and research mentorship
- Ample research opportunities in translational bench research and clinical research (can obtain a masters degree in clinical research)
- Excellent opportunities for education and teaching, award stipends, presentation of scholarly work

Location

- Bronx, NYC: an urban, diverse, busy city setting
- 20 min to Manhattan by car/subway
- Bronx Zoo, NY Botanical Gardens, Pelham Park, Arthur Ave (Little Italy), multicultural dining, Yankee Stadium, City Island, hiking and biking trails



Program Culture

- Warm, friendly, cohesive, collaborative, respectful, and team based
- Offers cutting-edge therapies and clinical trials
- Focused on advocacy and patient-centered care

Institution Culture:

- Mission to improve the health and well-being of children in our **local communities** and throughout the world
- Access to care for all children
- Recruiting an inclusive, diversified staff with a strong focus on social justice
- Embrace and respect the diversity of our patients, families, communities and coworkers
- Include families and all members of the healthcare team in decision making
- Continuous learning and professional development of pediatric work force and dedication to innovative research





Program Director:

Tanya Watt, MD, MSc

Associate Program Director:

Kathryn Dickerson, MD, MSCS

Program Coordinator:

Tomeka Bennett

Program Highlights:

- 3 Fellows/Year
- Weekly Oncology and Hematology Clinics
- 350 New Diagnoses Per Year
- Diverse Patient Population
- Academic Half-Day Education
- Night Float Model with Home Calls
- Quaternary Care Center

UT Southwestern Affiliations:

- Multiple Masters Level Programs
- NCI-Designated Simmons Comprehensive Cancer Center
- Access to World-Renowned Basic Science Laboratories
- Multi-Disciplinary Conferences



Dallas, Texas:

- 4th largest metro area in the country
- Excellent dining, shopping and cultural activities
- Professional sports teams; NFL, NHL, NBA, MLB, MLS
- Affordable cost of living

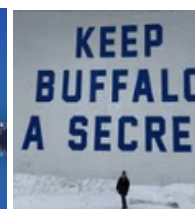
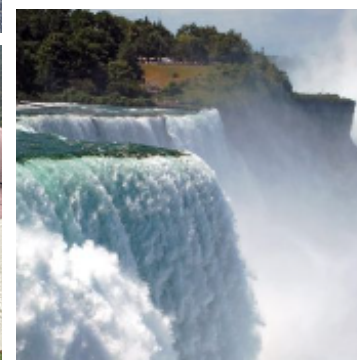




Golisano Children's
Hospital of Buffalo



CANCER AND BLOOD DISORDERS PROGRAM



UNIVERSITY AT BUFFALO PEDIATRIC HEMATOLOGY ONCOLOGY FELLOWSHIP PROGRAM

Program highlights

- Joint program between Roswell Park Comprehensive Cancer Center & Golisano Children's Hospital
- Largest Heme/Onc Program outside of NYC
- >70 new oncology diagnoses annually
- 13 faculty with subspecialty expertise in Hem/Onc/BMT
- New facilities 2017 - new name 2026
- Regional Sickle Cell Center, free-standing Hemophilia Center
- Participation in COG, PBTC, DFCI trials
- State-of-the art clinical & translational research opportunities with a focus in adoptive cellular therapies

Unique perks

- Not a fellow dependent program
- Call 1 weekend/module, 1 weeknight/week
- Generous maternity/paternity leave (NYS PFL)
- Diverse, family-friendly community, affordable cost of living

 ubped

DR. CLARE TWIST | PROGRAM DIRECTOR

DR. BEVERLY SCHAEFER | ASSOCIATE PROGRAM DIRECTOR

MARGARET BRAYMILLER | PROGRAM COORDINATOR

DR. KARA KELLY | WALDEMAR KAMINSKI ENDOWED CHAIR OF PEDIATRICS

LSU New Orleans Pediatric Hematology Oncology Fellowship

Program Basics

- 1-2 Fellows per year
- 1st year is focused on clinical training
- 2nd and 3rd year are focused on scholarly research
- Master's in Public Health offered
- Combined Medicine – Pediatric Oncology Fellowship

Clinical Excellence

- Emphasis on **graduated fellow autonomy** and **individualized mentorship**
- Wide array of sub specialization **Leading the Gulf South region:**
 - Comprehensive Sickle Cell Center
 - BMT and Cellular Therapy program – CAR-T, gene therapy for SCD
 - Hemostasis and Thrombosis Program: hemophilia, Girls and Adolescent with Bleeding disorders
 - Vascular Anomalies
 - Survivorship Program
 - Adolescent and Young Adult Transition for both Oncology and Sickle Cell patients
 - Neuro-Oncology

Academic Excellence

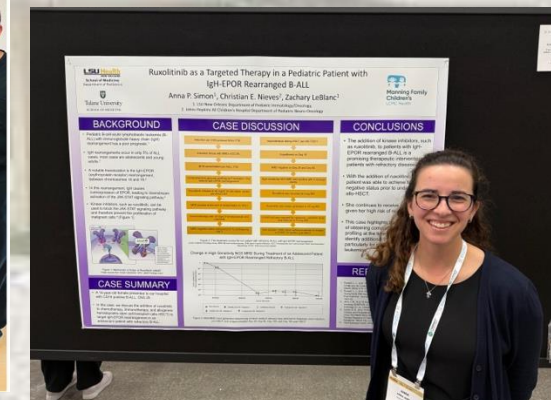
- Faculty from 2 nationally known universities with a wide array of research interests
 - Health Disparities
 - Global Health
 - Faculty involvement in multiple national consortia for BMT, Sickle Cell, Oncology, and more
- Opportunity for **research in barriers to equitable care** across the breadth of hematology and oncology
- **Flexible Career Path:** previous fellows have obtained Assistant Professor positions or chosen to pursue a 4th year sub-specialized fellowship (BMT, Transfusion Medicine, Neuro-oncology)



Pinki Prasad, MD



Taylor Rogge, PC



Program Basics

- 4 fellows per year
- 1st year is focused on clinic training
- 2nd & 3rd year are focused on scholarly research



Seattle Children's Hospital / University of Washington Pediatric Hematology and Oncology Fellowship Program

Clinical Training

- First year rotations – hematology (inpatient and outpatient), inpatient oncology, outpatient oncology, inpatient bone marrow transplant (BMT), outpatient BMT
- Second and third years – 2 weeks of “pre-attending” time on service of choice
- Rotation sites – Seattle Children's Hospital, UW Medical Center (radiation oncology), Odessa Brown children's clinic (sickle cell disease clinic)
- All years: ½ day weekly continuity clinic with longitudinal follow-up of a diverse cohort of primary patients; opportunity to customize subspecialty clinic experiences in 3rd year
 - Monthly heme continuity clinic

Research Training

- 1st year: 4 elective weeks to explore research opportunities and identify potential mentors and projects
- Second and third years: dedicated research time in laboratory, translational, outcomes, survivorship, and other areas of mentored research
- Opportunities to pursue MS, MPH or PhD during fellowship
- Individualized Scholarship Oversight Committee to support research and career development
- NCI T32 Pediatric Oncology Research Training Program
- Additional fellowship opportunities in Health Equity, Palliative Care, Health Services, and Bioethics

Curriculum

- First Tuesday of each month – protected didactic time for all fellows
- Humanism Series: topics include bias & discrimination, resilience & work-life balance, debriefing sessions, and communication training (VitalTalk)
- Professional Development Series: topics include mentorship, job searches, academic tracks and promotions, career transitions
- SCH Fellows College: topics include teaching, scientific presentations, networking, delivering job talks, negotiation skills
- Annual PHO grant writing course and mock study sections

<https://fredhutch.org/pedoncfellowship>



UW Medicine

