



# Johns Hopkins All Children's Hospital Pediatric Hematology-Oncology Fellowship Program

## Year 1

Rotation	Inpatient	Outpatient	HSCT	PNO	ELEC	VACA
Number of Blocks	6	3	1	1	1	(4 wks)

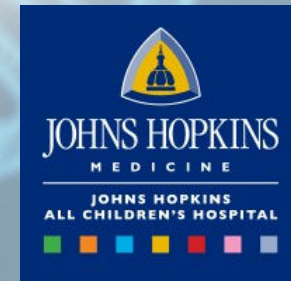
- Staffed by **27 physicians** and **23 advanced practice providers**
- > 150 new cancer diagnoses annually
- >1500 patients with sickle cell disease, hemophilia, thromboembolism, bone marrow failure, vascular anomalies, histiocytosis, and general hematology are cared for annually
- PGY-7 fellowship programs in **Neuro-oncology** and **Bone Marrow Transplantation and Cellular Therapy**
- **Gene therapy** initiated in FY25
- Located in the historic downtown area of St. Petersburg, Florida, minutes away from **white sand beaches**, watersports, thriving arts scene including the Salvador Dalí Museum, unique dining experiences, theme parks (Busch Gardens and Adventure Island), nature and wildlife preserves, professional and recreational sports teams, and more!

**On-call schedule:** Night call is taken from home. Occasionally fellows may come in for newly diagnosed or extremely ill patients. *Your night and weekend calls will be fully supported by a fun team of in-house HO attending physicians@!*

**Fellowship Years 2/3:** Physician-investigator training. Fellows will learn how to conduct high quality clinical, translational and/or laboratory-based research and will lead educational activities.

**Academic Activities:** Enjoy an introductory bootcamp, a longitudinal *Fellows Core Curriculum* covering leadership, wellness, and finance, plus *pathology didactics* that travel from peripheral smears to chromosomes to Howell-Jolly bodies.

Get involved through council membership and flex your skills with teaching and quality improvement projects in a learning community where pediatric care, academic curiosity, and thoughtful mentorship go hand in hand!



# University of Minnesota Pediatric Hematology/Oncology Fellowship

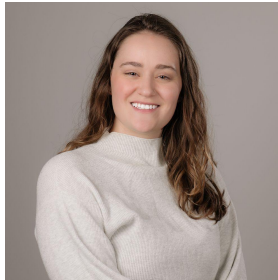
Alex Boucher, MD  
[bouch070@umn.edu](mailto:bouch070@umn.edu)  
Program Director



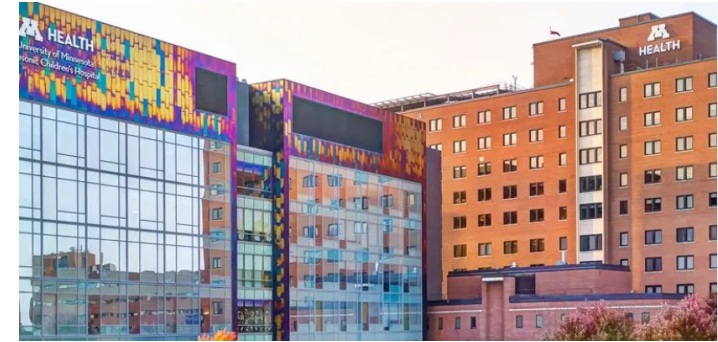
Clay Hoerig  
[choerig@umn.edu](mailto:choerig@umn.edu)  
Associate Program Director



Sid Clarke  
[clar2258@umn.edu](mailto:clar2258@umn.edu)  
Program Administrator



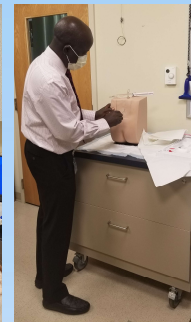
- MHealth Fairview University of Minnesota Masonic Children's Hospital - Primary training site offers broad exposure to the entire spectrum of hematology/oncology and blood and marrow transplantation and cellular therapy in pediatrics.
- The Children's Hospital and Clinics of Minnesota Minneapolis site offers a focus on hematology patients during a 1 month rotation and continuity care clinic.
- There is a full complement of educational offerings including departmental grand rounds, morning report, rotating weekly educational talks, and weekly didactics.
- We offer dedicated mentorship from our large faculty with variety of expertise in clinical, research, laboratory, quality and safety, and education areas.
- We provide 15 blocks of clinical work and 24 blocks of protected time for hypothesis-driven research.



# Penn State Health Golisano Children's Hospital Pediatric Hematology Oncology Fellowship Program

## Program Highlights:

- 2 fellows per year
- 17 clinical faculty
- 7 basic science-translational research faculty
- 200+ new oncology patients per year
- Broad exposure to hematology patients with dedicated sickle cell and hemophilia clinics
- Pediatric oncology is supported by one of the largest student-run U.S. philanthropies THON, by Mini-THON, and by Four Diamonds
- Member of multiple consortia including the Children's Oncology Group and Beat Childhood Cancer Research Consortium



## Our Mission:

The principal goal of the Pediatric Hematology/Oncology Fellowship at [Penn State Health Children's Hospital](http://Penn State Health Children's Hospital) is to train fellows to become outstanding, independent physicians or physician-scientists and prepare them for an academic career incorporating clinical care, research and education. The first year of the program consists of 13 four-week clinically-focused blocks. The second and third years focus on research training and scholarly activities. Fellows pursue a basic laboratory, translational laboratory or clinical research track to accomplish their scholarly activities. All fellows complete a core scholarly curriculum regardless of their research track. In addition, fellows maintain a weekly, half-day continuity clinic, which is supervised by a longitudinal clinical mentor. Fellows are also expected to participate in quality improvement projects throughout their entire training

## Our Location:

Central Pennsylvania is known for its natural beauty, low cost of living and diverse experiences. Just like the surrounding area, Penn State College of Medicine offers an inclusive and welcoming environment toward people from all walks of life. While you're here, you're part of a community working to impact and improve Central PA, making this region a happy and healthy place to live.

***Why not train in the sweetest place on Earth?***

## Contact Information:

Program Director: Betsy Finch, [efinch1@pennstatehealth.psu.edu](mailto:efinch1@pennstatehealth.psu.edu)  
 Program Coordinator: Beth Schwarz, [bschwarz@pennstatehealth.psu.edu](mailto:bschwarz@pennstatehealth.psu.edu)  
 Our website: <https://residency.med.psu.edu/programs/pediatric-hematology-oncology-fellowship/>



## Where's Hershey?

Hershey is next door to the state capital, Harrisburg, historic Lancaster and Gettysburg. And it's easy to get to some of the Mid-Atlantic's largest metros.

- Philadelphia (1.5 hours)
- Baltimore (1.5 hours)
- New York City (2.5 hours)
- Washington, D.C. (2.5 hours)
- Pittsburgh (3.5 hours)



**PennState Health**  
Golisano Children's Hospital

# Children's National Hospital Center for Cancer & Blood Disorders



## Program Directors

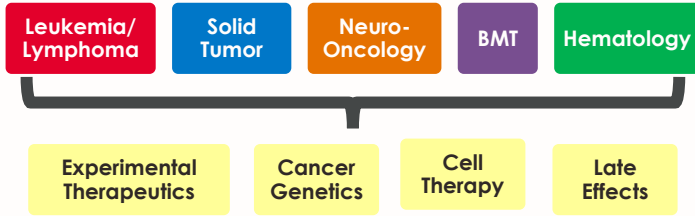


Holly Meany, MD  
Program Director



Liny John, MD  
Associate Program Director

## Clinical Center



**Oncology:** Over 300 new oncology diagnoses a year, over 100 active therapeutic protocols, and early phase clinical trial center

**Hematology:** One of the largest sickle cell disease (SCD) populations and first to provide gene therapy for pediatric SCD

## Washington DC

- Vibrant, diverse city
- Rich history
- Museums, music, theater
- Easy public transportation
- Close to mountains and beaches



## Learn More

Instagram

Video



## Fellowship

**Clinical**

Service: 1<sup>st</sup> year - 8 months inpatient, 4 months outpatient  
 Clinic: One half day of protected clinic time per week for primary continuity patients  
 Call: 1<sup>st</sup> years split weekend calls with senior fellow daytime coverage; 2<sup>nd</sup>/3<sup>rd</sup> years take weeknight calls  
 Additional Fellowships: Subspecialty fellowships available in Neuro-Oncology and BMT/Cellular Therapy

**Research**

Protected research time in 2<sup>nd</sup> and 3<sup>rd</sup> year  
 Sites include Children's National, National Institutes of Health, George Washington, Virginia Tech  
 Funding available for advanced degrees  
 Grant opportunities available including T32 training grant

**Curriculum**

Weekly didactic lectures by faculty  
 Tumor boards in leukemia/lymphoma, solid tumor, neuro-oncology, hematology, and BMT  
 Interactive senior fellow sessions with case-based learning  
 Ample opportunities for medical education of residents and medical students





# PEDIATRIC HEMATOLOGY-ONCOLOGY FELLOWSHIP



## TRAIN IN A QUATERNARY CARE CHILDREN'S HOSPITAL

- Among the best children's hospitals in the nation, and ranked #1 in Texas
- Located in Houston, the most diverse city in the US, and in the Texas Medical Center, the largest medical complex in the world



## LEARN FROM LEADERS IN THE FIELD

- Faculty with clinical and research expertise committed to fellow education and mentorship
- Training in writing peer-reviewed grants
- Commitment to career advancement and developing leaders in the field

Learn more!



## JOIN OUR PROGRAM

- 6 fellow positions per year
- High acuity and high volume clinical exposure in hematology, oncology, and stem cell transplantation
- Opportunities for laboratory and clinical research and collaborations across multiple institutions
- Dedicated to recruiting and retaining outstanding faculty and trainees from a wide range of backgrounds, providing a supportive learning environment for all

# Cincinnati Children's Hospital Medical Center Cancer and Blood Diseases Institute

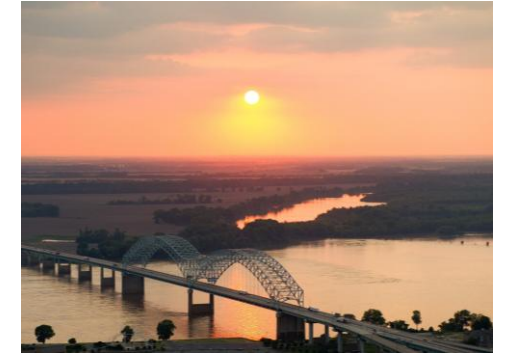


- Large academic pediatric hospital
  - Ranked #1 in Pediatric Cancer for the last 3 years
  - Ranked #2 for Department of Pediatrics
  - Ranked #2 in NIH funding among all Children's Hospitals
- World renowned leaders in Hematology, Oncology, and Bone Marrow Transplant/Immunodeficiency
- Large national and international referral base
- 5 pediatric hematology/oncology fellows/year
- Large clinical trials infrastructure
- Over 100 faculty with a broad range of discovery science, translational, and clinical research interests.
- CCHMC is ranked #5 in America's Best Employers for Healthcare Professionals by Forbes.



**Cincinnati is an outstanding place to live:** a vibrant midsize city with welcoming neighborhoods for young professionals and families. It offers an excellent arts scene, abundant outdoor recreation, professional sports, excellent restaurants, and a world-class zoo - all with a low cost of living and easy commutes.

# St. Jude Children's Research Hospital Fellowship Program



## Program numbers

- Current fellows: 18
- New fellows each year: 6

## Director

Hiroto Inaba, MD, PhD  
hiroto.inaba@stjude.org

## Associate Director

Nidhi Bhatt, MD  
nidhi.bhatt@stjude.org

## Program Manager

Rachel Bernstein, EdS  
rachel.bernstein@stjude.org

## Program Coordinator

Justin Scoggins  
justin.scoggins@stjude.org

## Personalized experience

- Highly flexible 3-year program tailored to individual needs
- Training future leaders in clinical, translational and basic research
- Financial support available for advanced degrees and conferences

## A place of firsts

- World leader in pediatric catastrophic disease through research and treatment
- Exceptional community devoted to “finding cures and saving children”
- Strategic institutional initiative devoting resources to clinical trainees

## Committed leadership

- Dedicated to providing support and resources for fellows

## Unparalleled environment

- Unique and large patient population
- World-class faculty and facilities
- Wide range of educational activities
- Collaborative culture

## Abundant opportunities

- Physician-scientist instructor program
- Institutional T32, K12 fellowships
- Subspecialty fellowships
  - Cancer Predisposition
  - Cancer Survivorship
  - Global Pediatric Medicine
  - Hospice and Palliative Medicine
  - Leukemia/Lymphoma
  - Neuro-Oncology
  - Onco-Critical Care
  - Sickle Cell Disease
  - Solid Tumor
  - Transplant and Cellular Therapy

## About Memphis

- Rich in culture and opportunity
- Beautiful parks, running trails, and outdoor spaces
- Affordable
- World-class museums, parks, music, dining, and entertainment

**“We are committed to building the best fellowship program in the world.”**

**Drs. Inaba and Bhatt**





## Pediatric Hematology/Oncology Fellowship Come wave with us!

### Where You'll Learn

- Iowa's only pediatric academic medical center and BMT program
- University of Iowa Dance Marathon Pediatric Cancer and Blood Disorders Center – opened in 2017
- A fellow-independent program – work alongside experienced faculty, APPs, and other staff dedicated to your education
- Medium-sized patient volume
- All-around excellence in clinical care – ranked in 6 pediatric specialties (including cancer!)
- Committed to research – ranked #27 nationally for NIH funding
- Member of POETIC and CBTN

### Where You'll Live

- Iowa City – an affordable, Midwest college town
- Typical commute time <20 min
- Bike-friendly with ample trails and parks
- UNESCO City of Literature
- Lots of fine arts and community events – many of them free!
- Home to US News & World Report ranked public schools
- Within 3-5 hours from most Midwestern cities without the daily traffic!
- A supportive community – you can be part of the greatest tradition in college sports

### Contact Us!

**Program Director:** Jessica Zimmerman, MD, MS

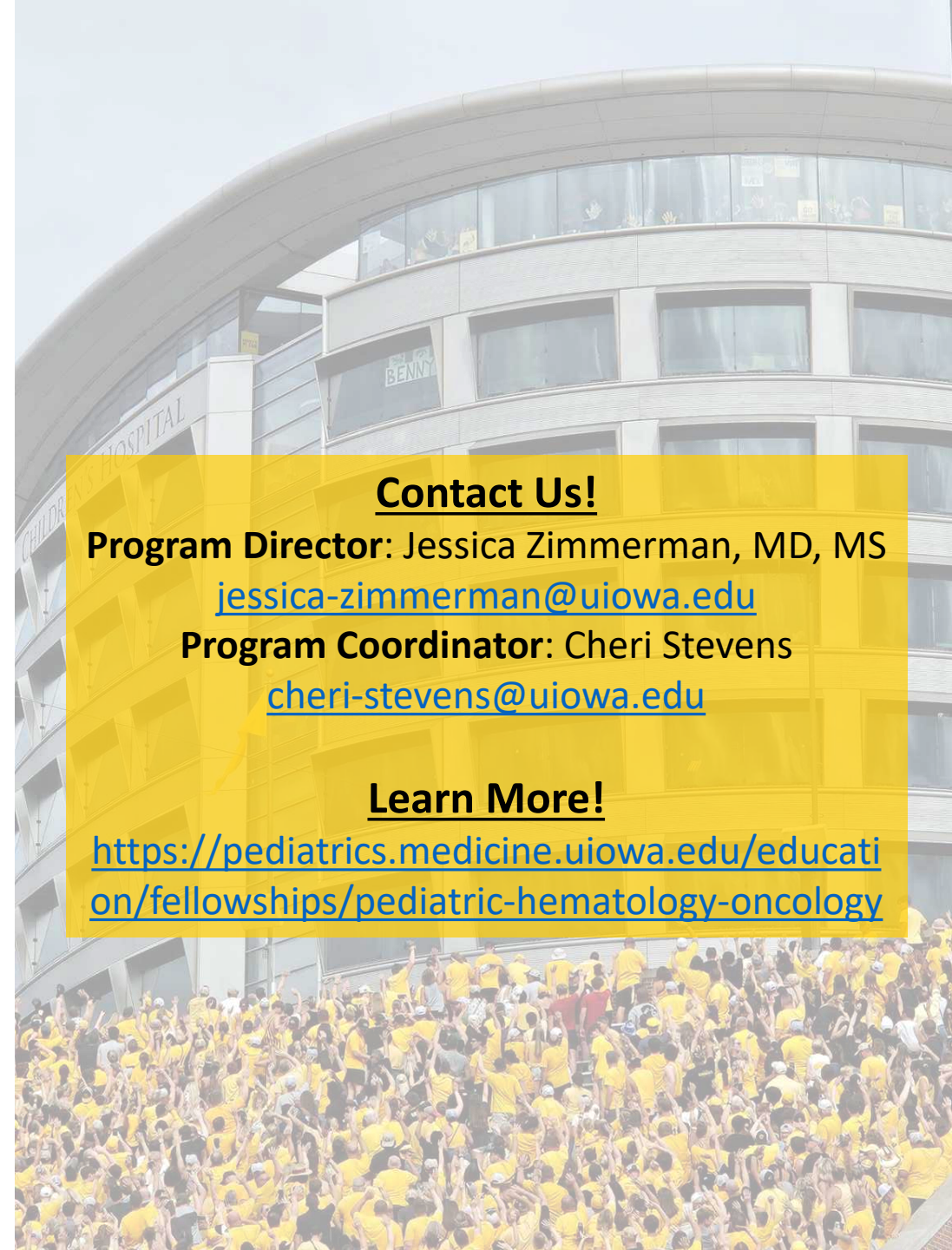
[jessica-zimmerman@uiowa.edu](mailto:jessica-zimmerman@uiowa.edu)

**Program Coordinator:** Cheri Stevens

[cheri-stevens@uiowa.edu](mailto:cheri-stevens@uiowa.edu)

### Learn More!

<https://pediatrics.medicine.uiowa.edu/education/fellowships/pediatric-hematology-oncology>



# Hematology Oncology Fellowship



*Melissa Frei-Jones, MD*  
Program Director



Nicole Meyer  
Program Coordinator

## PROGRAM HIGHLIGHTS

### Clinical Excellence

- Cancer Genetics Program
- Adolescent and Young Adult Oncology Program
- Childhood Cancer Survivorship Program
- South Texas Hemophilia and Thrombosis Treatment Center
- South Texas Sickle Cell and Thalassemia Program
- Comprehensive Vascular Anomaly Program

### Education and Outreach Excellence

- Rio Grand Valley Hemophilia Outreach Clinic
- Southeast Asia Pediatric Hematology-Oncology Program

### Research Excellence

- Greehey Children's Cancer Research Institute
- Children's Oncology Group
- NCI Community Oncology Research Program
- POETIC Pediatric Phase 1

### Fellow Support

- Greehey Endowment for Pediatric Hematology-Oncology Fellows
- Najim Scholars Program

## PROGRAM GOALS

To develop physicians who become:

- Proficient in the evidence-based management of children, adolescents and young adults with hematology and oncology disorders
- High quality basic scientists, clinical investigators or clinical educators
- Outstanding clinicians with a lifelong commitment to patient care and community involvement

## OUR FAMILY

- 80-100 new oncology diagnoses annually
- 1-2 fellow/yr
- 11 Clinical and research division faculty
- 1 Nurse Practitioner
- 2 Genetic Counselors
- 2 Psychologists
- 4 Social Workers
- 1 Sickle Cell Nurse
- 2 Hemophilia Nurses
- 2 Physical Therapists
- 6 Research Staff

 #UTHealthSA

 Uthealthgme

 UTHealthSAPediatrics

## CONTACT

Email: [freiJones@uthscsa.edu](mailto:freiJones@uthscsa.edu)

Website:

<https://lsom.uthscsa.edu/pediatrics/divisions/hematology-oncology/education/pediatric-hematology-oncology-fellowship/>



# Aflac Cancer & Blood Disorders Center Pediatric Hematology/Oncology Fellowship



EMORY UNIVERSITY

## Program Highlights:

- Premier program in the Southeast
- Robust patient volumes + equal balance of hematology & oncology
- Clinical, translational, & basic research all equally possible and valued
  - Collaborations with Georgia Tech
- Opportunities for additional training
  - 4<sup>th</sup> year for research, neuro-oncology, BMT, survivorship, etc
  - Combined med/peds fellowship
  - Advanced degrees during fellowship including MSCR and PhD

## Size Matters:

- 6 fellows/year
- >130 PHO faculty
- ~500 new oncology dx/yr
- Largest hematology program in the country
- State-of-the-art new hospital opened in **2024**

## Program Culture:

- Family feel despite size
- Fellows treated as colleagues
- Constantly evolving based on fellow feedback

## Atlanta:

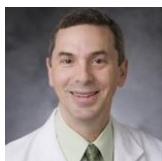
- Vibrant, progressive city
- Something for everyone: food, sports, museums, music
- “City within a forest”



## Program Leadership:



Katie Sutton, MD  
Director



Dan Wechsler, MD, PhD  
Co-Director



Neha Desai, DO  
Associate Director



Gary Woods, MD  
Associate Director



Gary Lindsay  
Sr. Program Coordinator

- Saarah Hussain, Program Director
- Julie Krystal & Anshul Vagrecha, APDs
- About 300 new oncology diagnoses/year
- Programs in solid tumors, early phase clinical trials, CAR-T, gene therapy, Sickle Cell Disease, Hemophilia Treatment Center- **YOU WILL SEE IT ALL!**



## Pediatric Hematology- Oncology & Cellular Therapy

- 3 fellows/year
- First year clinical: time on each service, outpatient, electives
- Flexible 2<sup>nd</sup> and 3<sup>rd</sup> years based on fellow interest: lab, clinical research, MPH, Med Ed, etc. Funding for advanced degrees.
- Emphasis on expertise development and academic career



**Follow us on Insta!**  
ccmcpedshemeonc



**Program Culture:** We focus on fostering a **robust clinical and academic learning** environment based on a foundation of support, diversity, inclusion and education.



**Geographic area/Culture:** We serve **THE most diverse population in the country** and take care of patients from every culture and background imaginable. This brings an incredible depth to our practice, and our fellows learn firsthand how to address barriers to care in a diverse environment and ensure all patients get the best care.

**Institution Culture:** Northwell is the largest health system in New York. Our patients have access to incredible care, and we get to work in a system that values diversity, wellness, and celebrates all that we do.



# Utah Pediatric Hematology/Oncology Fellowship



**HEALTH**  
UNIVERSITY OF UTAH

## Program Highlights

- Largest geographic referral area in United States
- New clinic, infusion area and inpatient space opened July 2022
- Over 200 new oncology patients annually
- Hematology referral center for 5 states
- 30 faculty with expertise in BMT, cellular therapy, palliative care, neuro-onc, hematology
- Dedicated survivorship and cancer predisposition clinic
- Labs specializing in novel CAR-T therapy, checkpoint inhibition, new drug development and oncofertility

## Fellowship Highlights

- 2 fellows per year; 6 fellows total
- 100% board pass rate
- Tuition support for masters in clinical investigation, public health and other advanced degrees
- Annual fellow winter retreat and bimonthly wellness dinners
- Support for conference attendance including ASPHO for incoming fellows
- Myriad of basic science, translational and clinical research opportunities
- Support for additional research years for interested fellows
- Monthly Fellow Business meetings drive program change

## Utah and Salt Lake City

- One of the most livable cities in the United States
- 7 ski resorts within 45 minutes
- Easy access to world class outdoor activities including 8 national parks within 5 hours
- Host of 2034 Winter Olympics, Red Butte outdoor concerts and countless other cultural activities
- Family friendly with great public schools
- Award-winning restaurants and breweries

## Program Leadership



Mike Pulsipher, MD  
Division Chief



Jen McNeer, MD  
Medical Director



Billy Thomsen, MD  
Program Director



Kellee Parker, DO  
Associate Director



Joann Chavis  
Coordinator



For More Information

<https://medicine.utah.edu/pediatrics/hematology-oncology/fellowship>

[William.thomsen@hsc.utah.edu](mailto:William.thomsen@hsc.utah.edu) [Kellee.Parker@hsc.utah.edu](mailto:Kellee.Parker@hsc.utah.edu)



UOFUPEDHEMONG



# Yale Pediatric Hematology and Oncology Fellowship

## PROGRAM OVERVIEW

- 2 fellows/year
- 19 faculty members
- 8 advanced practice providers
- ~100 new diagnoses per year



**Program Director:** Farzana Pashankar, MD  
**Email:** farzana.pashankar@yale.edu

## FELLOW SCHEDULE

- First Year
  - 24 weeks of inpatient
  - 8 weeks of BMT
  - 4 weeks of research, rad/onc, lab medicine
  - 1 day of clinic/week
- Second and Third Year
  - 80% protected research time
  - ½ day of clinic/week

## JOIN OUR PROGRAM!

- 2 fellows per year
- Robust, collaborative clinical training with national experts in the field of solid tumor and neuro-oncology, non-malignant and malignant hematology, bone marrow transplant, cellular therapies, sickle cell, and bleeding/clotting disorders
- Our fellows have a myriad of research opportunities in clinical, basic, and translational research
- Tuition support for Master of Health Sciences with focus on clinical research, basic research, or medical education
- Diverse patient population with varying health related social needs
- Supportive community that values diversity and inclusion, providing a nurturing environment for both professional and personal growth.

## LIFE IN NEW HAVEN

- Experience life in New Haven, a vibrant city with a rich academic atmosphere, home to numerous theaters, museums, and cultural festivals, complemented by Yale University's historic campus and intellectual community.
- Convenient access to both New York City and Boston, offering expansive career, cultural, and recreational opportunities within a short train ride



Follow us on Instagram! @yalepedshemeonc