

Program Director: Christine Lee, MD

Associate Program Directors: Daniel Kamin, MD; Meenakshi Rao, MD, PhD

Summary

- ✦ Three-year ACGME-accredited program helping fellows become **leaders** in academic pediatrics gastroenterology
- ✦ We have **5 fellows per year**
- ✦ **Largest pediatric GI fellowship program in the US**
- ✦ Individualized mentorship and training in:
 - ✦ Medical Education
 - ✦ Basic and Translational Research
 - ✦ Patient Advocacy and Public Policy
 - ✦ Quality Improvement
 - ✦ Ethics
 - ✦ Clinical Research and Epidemiology
- ✦ **Continually advancing fellowship education every year**
 - ✦ In 2021, pioneered “Post-call go-home” and “Saturday night off” culture- using **faculty** coverage



Details by Fellowship Year

- ### Fellowship Year 1
- ✦ Building core proficiency in Consults, Inpatient, Nutrition, Hepatology, Endoscopy
 - ✦ Weekly half-day ambulatory teaching clinic and half-day most weeks in endoscopy
- ### Fellowship Years 2 & 3
- ✦ Focus on scholarly work projects with established mentors at Boston Children's Hospital or neighboring institutions
 - ✦ Continue weekly core GI and sub-specialty elective clinics
 - ✦ Approximately 4 weeks of inpatient services
 - ✦ Procedural competency is enhanced with mentored exposure to more advanced endoscopic techniques.

Program Highlights

- ✦ More than 80 faculty members
- ✦ 7 NIH funded basic science laboratories
- ✦ 4th year fellowships in Transplant Hepatology, Advanced Nutrition, Motility & IBD.
- ✦ NIH T32 funded for over 30 years
- ✦ Over \$10,000,000/year of research funding
- ✦ Numerous graduate training opportunities- Harvard School of Public Health, the Harvard Catalyst, and the Harvard Macy Program
- ✦ GI Division Centers of Excellence include:
 - ✦ Inflammatory Bowel Disease (Med/surgical and VEOIBD multidisciplinary program)
 - ✦ Childhood Liver Disease and Liver, Multivisceral and Intestine Transplant Program
 - ✦ Therapeutic Endoscopy
 - ✦ Clinical Nutrition
 - ✦ Center for Advanced Intestinal Rehab
 - ✦ Motility Program
 - ✦ Functional Abdominal Pain
 - ✦ Aerodigestive center
 - ✦ Celiac Disease
 - ✦ Bariatric Surgery
 - ✦ Congenital Enteropathy
 - ✦ **And many, many MORE!**



Procedural Training

- ### First Year Fellows
- ✦ Procedure “Bootcamp” during orientation
 - ✦ Approximately ½ day each week
 - ✦ Dedicated 1 month endoscopy rotation
- ### Second and Third Year
- ✦ Off-site, high volume endoscopy center (Lexington Satellite)
 - ✦ Assigned endoscopy mentored experience
 - ✦ Saturday urgent procedure on-call opportunity
- ### All Fellows
- ✦ Hands-on Endoscopy GI Course at Brigham and Women's
 - ✦ NASPGHAN Hands-on Endoscopy Course

Individualized Mentorship

- ✦ Assigned mentors as 1st year fellows
- ✦ Monthly meetings with Division Chief
- ✦ Meet with Program Directors several times per month
- ✦ Scholarship Oversight Committee (SOC)
- ✦ Formal Biannual Meetings with Program Directors



Boston

- ✦ 3 major medical schools, 27 hospitals and large biotech and pharma presence
- ✦ Youthful energy with approximately 65 universities/colleges
- ✦ Immensely diverse with some twenty neighborhoods
- ✦ Cape Cod/ New England are an easy drive away for beaches and outdoor summer and winter sports/ activities
- ✦ Additional support given to all fellows
 - ✦ \$2500/ year academic discretionary funds
 - ✦ 10,000/ year housing stipend
 - ✦ \$2400/ year loan assistance
 - ✦ Lease guarantee program
 - ✦ Licensing reimbursement during fellowship

Stony Brook Children's Hospital Pediatric Gastroenterology

Program director: Lesley Small-Harary

Division chief and assistant program director: Anupama Chawla

Program highlights

8 full time board certified faculty:

- Anupama Chawla, MD
- Jeffrey Morganstern, MD
- Grace Gathungu, MD
- Lesley Small-Harary, MD
- Keith Breglio, MD
- Ada Lee, DO
- Shivany Pathania, MD
- Jenna Berson, MD

- One fellow per year

- Only free standing children's hospital in Suffolk County, NY

- Pediatric Celiac Disease Center, multidisciplinary IBD Center, Healthy Weight and Wellness Center, Cystic Fibrosis Center, Duchene Muscular Dystrophy Center,

- 3 registered dieticians, 2 full time pediatric GI nurse practitioners, 1 full time RN, 1 full time research coordinator

Current Fellows



Our Curriculum

First Year

- 10 months of inpatient service with 1 month vacation and 1 month research
- 1 weekly continuity clinic with fellow's own patient panel
- 2 additional half day clinics and 2 scope sessions per week

Second Year

- 1 month of service
- 1 weekly continuity clinic with fellow's own patient panel
- 2 additional half day clinics and 2 scope sessions per week
- 1 month Transplant Hepatology at CHONY

Third Year

- 1 month of service
- 1 weekly continuity clinic with fellow's own patient panel
- 1 additional half day clinic and 2 scope sessions per week
- 2 week nutrition rotation, 1 week motility rotation, 2-4 week elective blocks for specific interests

Annual spring graduation party





Duke University Medical Center Pediatric Gastroenterology Fellowship Program

Program Director: Narayanan Venkatasubramani, MD



Program Overview

- ACGME-accredited
- 3 Fellows, one Fellow per year
- 13 Physicians (3 Hepatologists)
- 5 Outpatient sites, daily inpatient care
- Full spectrum of procedures

What can Duke PGI program offer?

- Only fellowship program in North Carolina with **Motility, Hepatology & small bowel transplant, celiac disease & Transnasal endoscopy experience**
- Great emphasis on clinical care with tertiary referral of complex kids to Duke
- Great research facility at Duke
- Faculty diversity, engaged, dynamic and open to change, work-life balance
- RTP, close to mountains, beach, beautiful restaurants
- **Programs:**
 - **Hepatology/Transplant**
 - **Intestinal Rehabilitation Center**
 - **Inflammatory Bowel Disease**
 - **Motility center**
 - **Celiac disease center**
 - **Feeding disorder**
 - **Aerodigestive/Transnasal Endoscopy**

Fellowship Rotations

Rotation	First Year	Second Year	Third Year
Inpatient Service	40 weeks (29/GI, 11/H)	8-12 weeks	8-12 weeks
Research	6 weeks	36-40 weeks	36-40 weeks
Electives/Conf	2 weeks (nutrition)	N/A	N/A
Vacation	4 weeks	4 weeks	4 weeks
Continuity Clinic	Faculty clinics	1/2 day/week	1/2 day/week
Specialty Clinics	IRP/IBD/Hepatology	Hepatology & Small bowel Transplant, IBD Feeding disorder	Hepatology & Small bowel Transplant, Motility
Procedures	1/2 day per week General GI/Liver biopsy	1/2 day per week GI, ARM, capsule, pH impedance	1/2 day per week GI, ARM, capsule pH impedance Adult GI

Faculty/Fellows

GI Faculty:

Dr. Bruno Chumpitazi
Dr. N. Venkatasubramani
Dr. John Lyles
Dr. Sana Syed
Dr. Danielle Mebuge
Dr. Arun Ajmera
Dr. Derek Armstrong
Dr. Haley Neef
Dr. Sandeep Puri
Dr. Jasmine Penderghast

Hepatologist:

Dr. Gillian Noel
Dr. Mansi Amin
Dr. Amrita Salunke
Fellows:
Dr. Reshma Patel
Dr. Sharmilaa Babu
Dr. Christine Martin

Conferences

- **Tuesdays:**
 - Pediatric Grand Rounds 8-9 AM
 - Fellows' Core Curriculum 4-5 PM
 - GI/Surgery/Radiology 7-8 AM
 - Adult/Peds GI Fellow case 5-6 PM
- **Thursdays:**
 - Pediatric GI Conference 4-5 PM
 - GI/Pathology Conference 4-5 PM
 - Adult/Peds GI endoscopy session 5-6 PM
- **Fridays:**
 - UNC Joint conference 7:30-8.15 AM
 - Chair's Clinical Case 12-1 PM

Links to Duke Fellowship Program

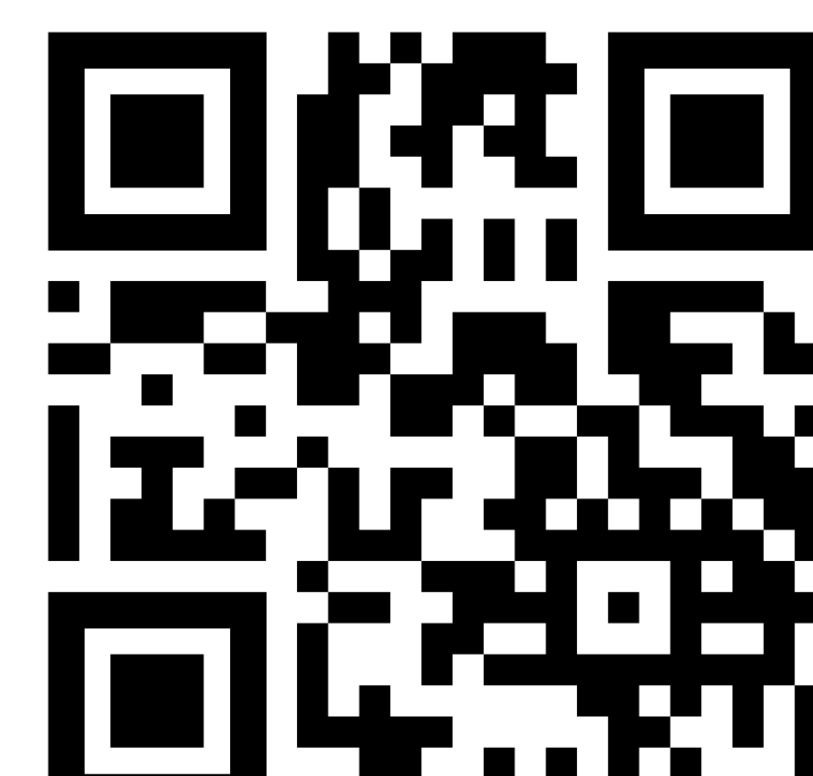
Link to the Department of Pediatrics Gastroenterology webpage
<https://pediatrics.duke.edu/divisions/gastroenterology-hepatology-and-nutrition>

“Why Choose Duke”:
<https://pediatrics.duke.edu/education-and-training/fellowship-programs/why-choose-duke>

“Why Train at Duke?”:
<https://gme.duke.edu/why-train-at-duke>

“Life in Durham”:
<https://gme.duke.edu/life-in>

Link to a recent issue of the Magazine <https://durham>



Clinical Experience

OUTPATIENT

- Weekly continuity clinics
- Hepatology and IBD Clinic in 1st year
- Electives to attend sub specialty clinics and community satellite clinics



INPATIENT

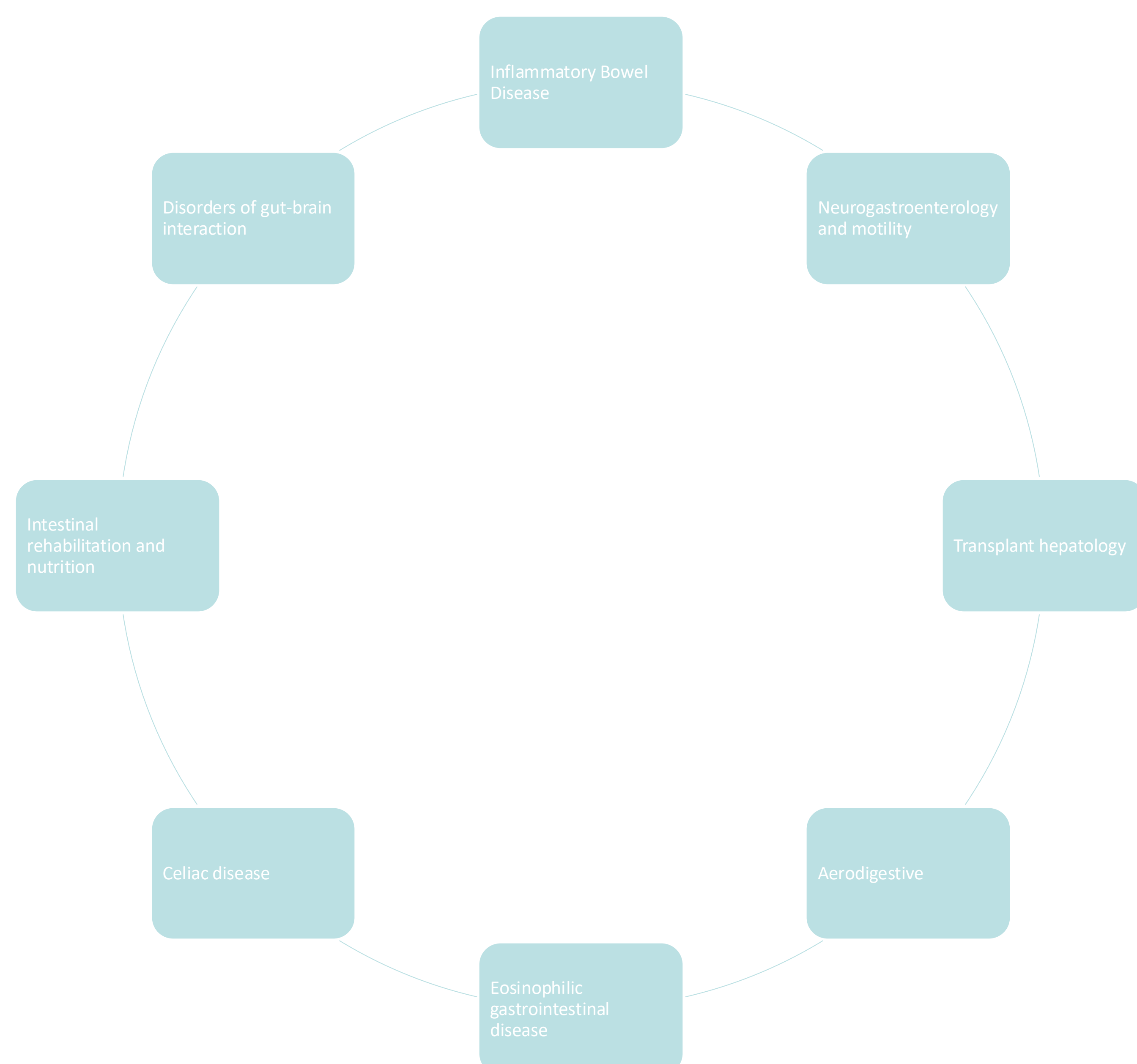
- GI and Hepatology services and inpatient consults
- Nutrition Consult Service



PROCEDURES

- Multiple procedure days split between fellows
- Exposure to diagnostic and therapeutic endoscopic procedures.

Subspecialty Focus



Program Overview

- Comprehensive clinical and research experience in pediatric gastroenterology, hepatology and nutrition.
- First year of fellowship is dedicated to inpatient and outpatient clinical experience.
- Second and third years focus on research, completing an academic project and honing outpatient clinical skills.
- Care for patients with a wide variety of clinical gastrointestinal diseases in the outpatient and inpatient setting.
- Develop outstanding endoscopic skills
- Care for diverse patient base from all cultures and socioeconomic backgrounds
- Yale School of Medicine and Yale University have a wealth of academic, research, social and cultural resources

RESEARCH OPPORTUNITIES

- Clinical, basic science and translational opportunities
- Fellows who choose a basic science laboratory may be placed under the T32 grant
- Opportunities to work with other sections and other departments
- Fellow are encouraged to pursue a project in their area of interest



EDUCATIONAL EXPERIENCE

- Weekly Pediatric GI conferences include:
 - GI Grand Rounds: State of the art lectures
 - Case conferences
 - Journal club
 - Morbidity and Mortality conference
 - Monthly pediatric radiology, pathology and joint surgery conferences.
- Joint pediatric and adult GI conferences
- Weekly pediatric grand rounds
- Opportunities to participate in medical education with medical students and residents
- Opportunities to attend Yale University courses and obtain post-graduate degrees: MHS, MHS- MedED, research courses
- Encouraged and supported to present at national conferences



Our Graduates Are:

- Academic Gastroenterologists
- Transplant Hepatologists
- Medical Educators
- Section Leaders

INTERVIEW PROCESS

July: Applications received through ERAS
 July-August: Review of applications
 September-October: Interviews
 Nov/Dec: Submission of rank list to the NRMP
 December: Match Day

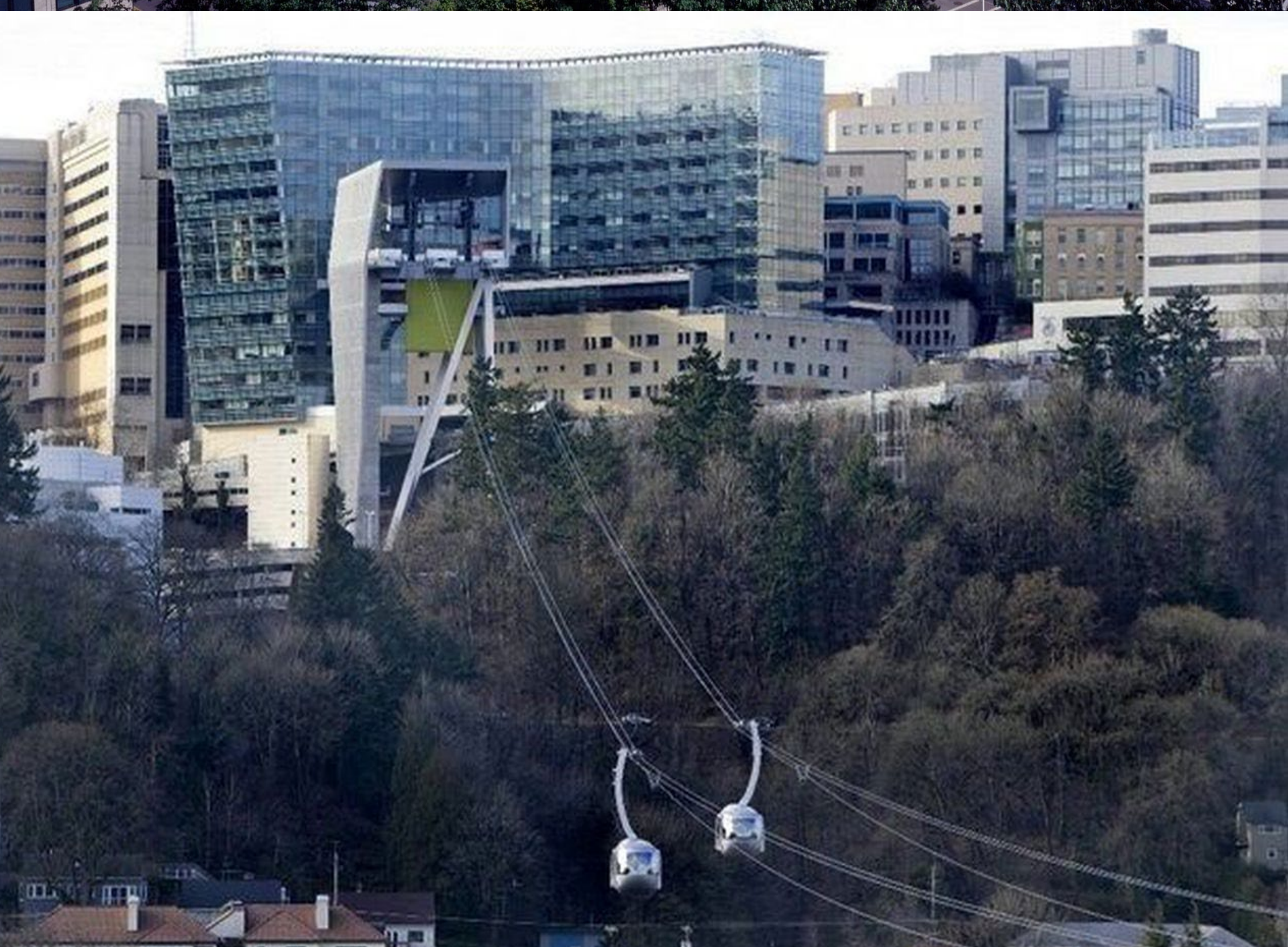
Months may change depending on NRMP



Oregon Health & Science University



DOERNBECHER
CHILDREN'S
Hospital



Personalized Fellowship Experience

- 1 Fellow per year, First fellow started 2025
- Flexible schedule to prioritize fellow's interests
- Many multi-disciplinary team-based clinics
- Outreach Clinics throughout the state
- Clinical/Bench Research opportunities available

Focus on Work-Life Balance while Learning

- We want you to ENJOY Portland and Oregon
- We want you to ENJOY fellowship while learning

Large Catchment Area

- Only academic center in the state
- Diverse diseases and patient population

Great Friendly Faculty and Staff

- | | |
|------------------------|----------------------|
| • 11 GI Attendings | • 2 GI Fellows |
| • 6 GI Nurses | • 2 GI psychologists |
| • 4 GI Dietitians | • 2 Pharmacists |
| • 3 Nurse Partitioners | • 1 PhD scientist |
| • 3 Medical Assistants | • 2 Coordinators |



Melanie K. Greifer, MD, Program Director
Michael Dolinger, MD, Associate Program Director

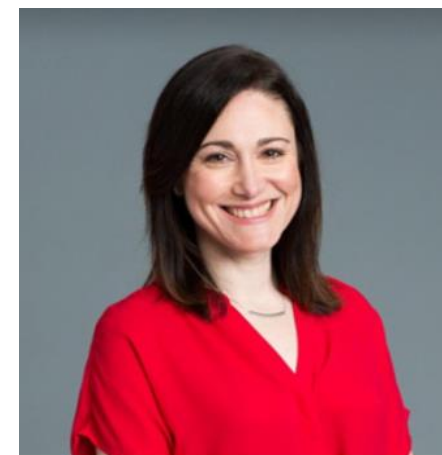
Our Fellowship

The goal of our fellowship program is to prepare the fellow for a career in academic pediatrics, with a strong emphasis on excellence in clinical care, teaching and productive and independent research. We are a three year, ACGME accredited program with TWO fellows per year. Because of the strong academic and research activities of the NYU Medical Center, the fellow will be exposed to a stimulating environment in one of the top Children's Hospitals and research Universities.

Faculty



Nadia Ovchinsky, MD, MBA
Division Chief of Pediatric GI, Hepatology and Nutrition
Professor of Pediatrics



Melanie Greifer, MD
Program Director
Clinical Professor of Pediatrics



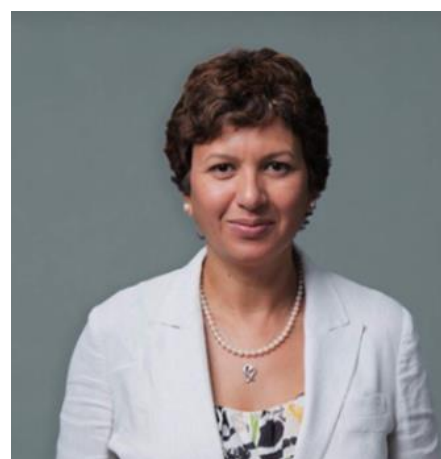
Michael Dolinger, MD
Director of Pediatric IBD
Assistant Professor of Pediatrics



Dana Goldner, MD
Assistant Professor of Pediatrics



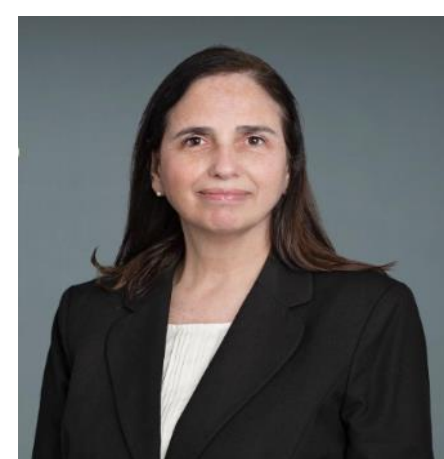
Shelly Joseph, MD
Clinical Assistant Professor of Pediatrics



Abha Kaistha, MD
Clinical Associate Professor of Pediatrics



Bridget Kiernan, MD
Clinical Assistant Professor of Pediatrics



Debora Kogan-Liberman
Director of Hepatology
Associate Professor of Pediatrics



Archana Kota, MD
Clinical Assistant Professor of Pediatrics



Jeremiah Levine, MD
Professor of Pediatrics



Helen Mac, MD
Clinical Assistant Professor of Pediatrics



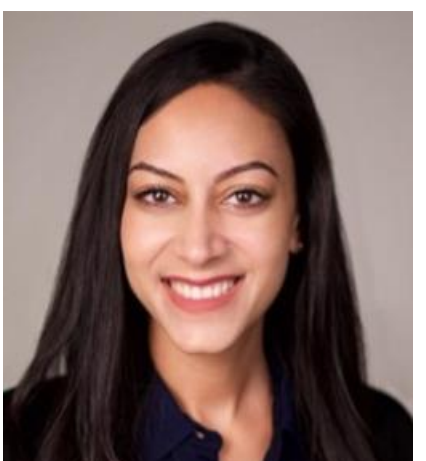
Libia Moy, MD
Clinical Associate Professor of Pediatrics



Jennifer Vittorio, MD
Medical Director, Pediatric Liver Transplant
Associate Professor of Pediatrics



Kara Margolis, MD
Director of Brain Gut Research
Associate Professor of Pediatrics



Minoti Vather, MD
Clinical Assistant Professor of Pediatrics

Overview of Fellowship Schedule

First Year of Fellowship:

- Inpatient (GI/Hepatology)
- Nutrition Rotation
- Research
- Continuity Clinic (all rotations)
- Endoscopy Suite (all rotations)

Second Year Of Fellowship:

- Research
- Inpatient (GI/Hepatology)
- Nutrition Rotation
- Outpatient Hepatology
- Continuity Clinic (all rotations)
- Endoscopy Suite (all rotations)

Third Year of Fellowship:

- Research
- Inpatient (GI/Hepatology) incl "pretending"
- Adult GI Rotation
- Continuity Clinic (all rotations)
- Endoscopy Suite (all rotations)

Fellowship Conferences and Didactic Sessions

	Monday	Tuesday	Wednesday	Thursday	Friday
Morning	Adult GI Grand Rounds	Pediatric Grand Rounds		Advanced Endoscopy conference (1x/month) TPN & Nutrition Rounds (weekly)	
Afternoon				Pediatric GI Grand Rounds (weekly) Case presentation (weekly) Pathology (weekly)	Transplant Lunch and Learn (monthly)
Evening	Liver Pathology (biweekly)	Fellows Didactic Sessions (weekly) Resident Academic Half Day (weekly)	Pediatric Liver Transplantation (weekly) Liver Radiology Rounds (weekly) Peds Subspecialty Fellows College (quarterly) IBD conference (weekly)		

Program Highlights

- Close relationship with Adult GI: Excellent experiences in advanced endoscopy, interventional procedures, collaboration with a **comprehensive IBD center**
- Robust and active Pediatric Hepatology and Transplant Program
- Hassenfeld Children's Hospital: all single bed rooms & state-of-the-art technologies
- Active research projects and clinical trials in:

- Eosinophilic Esophagitis
- IBD
- Celiac Disease
- Gut Microbiome
- Aerodigestive Diseases and Asthma
- Liver Transplantation
- NAFLD/MASLD
- IBAT inhibitors in Cholestatic Disorders
- Primary Sclerosing Cholangitis
- Xenotransplantation

- Collaboration with Margolis Lab focused on translational and basic science research examining the diverse aspects of gut-brain signaling
- Special Interests include:

- Pediatric Celiac Disease and Gluten-Related Disorders Program
- Eosinophilic Disorders Program
- GUARD (Gastroesophageal, Upper Airway & Respiratory Diseases) Center
- Pediatric Interdisciplinary Nutrition and Feeding Program
- Pediatric Inflammatory Bowel Disease Program/Transition of Care Clinic
- Intestinal Ultrasound Training Program
- Complex Colorectal Care Team for Bowel Management
- Neurogastroenterology and Motility Program
- Intestinal Rehabilitation Program

