

What is unique about Cincinnati Children's Pediatric Nephrology Fellowship Program

We do everything!!!!!!

We manage the spectrum of kidney diseases, ranging from routine conditions to the most complex patients with AKI, CAKUT & Transplants

We have excellent support —pharmacists, nurses, nurse practitioners, social workers, dieticians, etc.

We incorporate teamwork—urologists, transplant surgeons, critical care doctors, ID doctors, etc.

We train new generation of leaders - excellent mentorship and resources for career development

Program Aim:

- The global aim of the fellowship program is to produce the next generation of pediatric nephrology clinician-scientists by providing comprehensive training for a future career in clinical nephrology and academic research
- To train individuals to be board-certified pediatric nephrologists fully adept in all areas of clinical care, including inpatient and outpatient nephrology, renal replacement therapy and kidney transplantation
- To produce academic physicians prepared to advance the field of pediatric nephrology through basic science, translational or clinical research

Program Description:

- First year of fellowship is focused on clinical training
 - 7 months of inpatient coverage, 3 months of outpatient clinic/PTO
 - 1 week of Urology, Pathology rotation
 - 2 weeks in the dialysis unit rotation, 2 weeks of transplantation rotation, 2 weeks of research rotation
 - Second and Third years
 - 80% protected for research
 - 20% clinical time (4 weeks of inpatient, ½ day per week of clinic/kidney biopsies/dialysis patients)
- Master's degree/Certification-Clinical/translational research, Medical Education, Bioinformatics, Public Health
- Translational research- Biomarkers, glomerulonephritis
- QI training
- Basic science- Kidney development



Children's Hospital of Philadelphia Pediatric Nephrology Fellowship

& Med-Peds Nephrology in collaboration with University of Pennsylvania

Faculty & Fellows



PD:

Erum Hartung



APD:

Jason Lee



Coordinator:

Jamie Jarrett



Div. Chief:

Ben Laskin

WHO'S WHO? ATTENDING PHYSICIANS



WHO'S WHO? CHOP FELLOWS

Year 1	Year 2	Year 3	Year 4



@chopnephfellows

Program Highlights

Clinical training

- Extensive inpatient and outpatient clinical exposure in large tertiary care hospital, with balance of complex and "bread-and-butter" nephrology
- ~15 kidney transplants/year; chronic HD (in-center and home) and PD programs (10-15 patients each)
- CRRT, Aquadex, many native and transplant biopsies
- Multi-disciplinary clinics: Lupus Integrated Nephritis Clinic; Hypertension; Cancer Survivorship; Kidney-Liver, Inherited Kidney Diseases, and more

Education

- Weekly didactic experiences, including Fellows' Core Curriculum, Grand Rounds, Journal Club, Pathology Conference, Urology/Nephrology/Radiology Conference, Case Conferences, and more
- Opportunities for [Masters and Certificate programs at Penn](#) (Clinical Epidemiology, Translational Research, Health Policy, Quality Improvement)

Research

- Many clinical, translational, and basic science research opportunities across CHOP and Penn
- CHOP is an NIH P50-funded [Pediatric Center of Excellence in Nephrology](#)
- [Penn-CHOP Kidney Innovation Center](#) integrates and accelerates nephrology research across CHOP & Penn

Environment



We are CHOP

and we can't wait to show you around.



chopnephfellows
Philadelphia, Pennsylvania



chopnephfellows Welcome to CHOP, where this could be YOUR walk to work 🇺🇸 🌟 🧡 🏠: inpatient and consult fellows @whs5123 and @tarsar1

Why Philly?

- [About Philadelphia | Children's Hospital of Philadelphia \(chop.edu\)](#)
- [9 Reasons Why Philadelphia Is The Most Unique City In America \(onlyinyourstate.com\)](#)
- [7 Reasons to Move to Philadelphia in 2025 | Prevu](#)



DukeHealth Pediatric Nephrology Fellowship

Program Structure

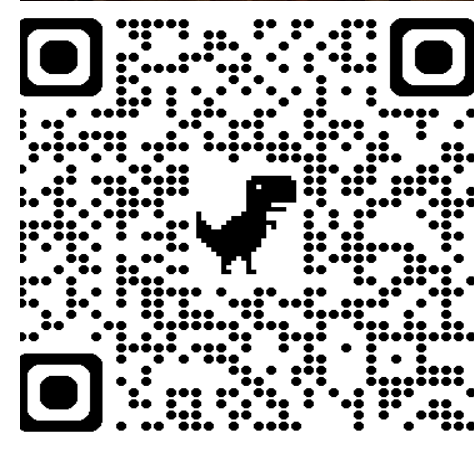
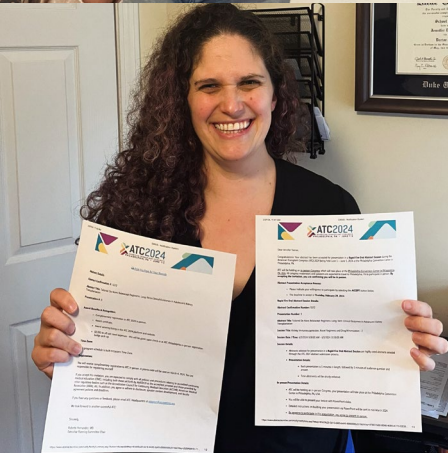
- 3 year ACGME fellowship
- 1st year is primary clinical
- 2nd and 3rd year fellows spend 80% research and 20% clinical

Program Highlights

- Duke University is a world-class tertiary care medical center serving a diverse patient population with a wide spectrum of pediatric kidney disorders
- We tailor training plans that are developed to meet the individual needs and goals of each fellow
- 6 Full time faculty and 2 current fellows
- Our division is actively engaged in multiple clinical, medical education, quality and basic/translational research projects, is involved in national consortia and holds a number of grants
- Longitudinal exposure in dialysis, transplant, and lupus clinics
- Fellow continuity clinic to manage their own patient panel
- Opportunities to rotate in urology clinic
- We have strong clinical and research collaboratives with our adult nephrology, urology, rheumatology, and abdominal transplant surgery colleagues
- Durham, NC and the RTP region offers low cost living, mild climate and wide variety of cultural, social and recreational activities.

Contact

- Program Coordinator: Latoya Burgess, latoya.burgess@duke.edu
- Program Director: Reeti Kumar, reeti.kumar@duke.edu
- Associate Program Director: Eileen Chambers, Eileen.chambers@duke.edu



Children's Mercy Kansas City Nephrology Fellowship

Faculty and Fellows

PD: Darcy Weidemann



APD: Nathan Beins




Fellows Retreat – Escape Room Escapades!

Nephrology Division Retreat



Program Highlights

Clinical training

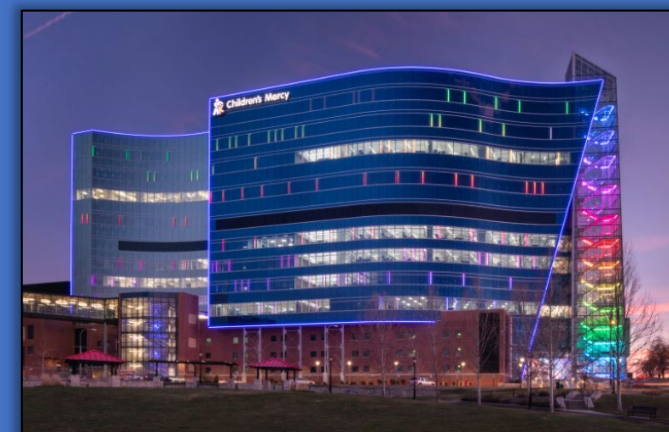
- Robust kidney transplant program (average ~ 10-12 transplants/year)
- Large institution-based pediatric dialysis program, including home hemodialysis
- Full spectrum of extra-corporeal support devices in inpatient setting
- Nationally-ranked top 10 US News & World Report program for over 12 years and...
- **Ranked #9 in the Nation in 2024!** 

Education

- Formal curricula in Grant-Writing and Quality Improvement methodology:
 - Option to pursue Certificate or Master's programs at UMKC (Bioethics, Bioinformatics, Health Professions Education)
- Weekly didactic experiences including:
 - Formal lectures
 - Pathology conference
 - Nephrology Grand Rounds
 - Journal Club
 - Urology/Nephrology/Radiology conference



Environment



Learn more about [CMH Nephrology](#)

Why Kansas City?

Clinical Services

- 255 Bed Children's Hospital
- 20 bed PICU & 31 bed CVICU
- 74 bed NICU (level 4); coverage of 65 bed NICU (level 3)
- Exclusive Nephrology coverage at Le Bonheur & St. Jude Children's Hospitals
- Large referral region of the southeast

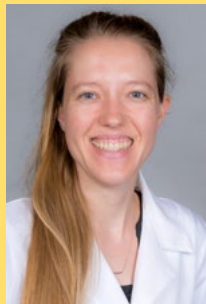


Memphis Highlights

- Shelby Farms Park: 4500+ acres, 40+ miles trails, fishing, etc.
- Sports: NBA (Grizzlies), Minor League Baseball (Redbirds)
- Lots of restaurants, shows, festivals, etc.
- Variety of neighborhoods for singles and families



**Program
Director**
Erica Bjornstad



**Current
Fellow**
Dinah Batchelor

Pediatric Nephrology Division

- 4 Pediatric Nephrology Faculty
- 1 Med/Peds Nephrology Faculty
- Provide all therapies: CRRT, PD, HD, aquadex, plasmapheresis
- Perform own renal biopsies

Fellowship Highlights

- Advanced training in oncologic and sickle cell nephropathy with St. Jude Children's Hospital
- Tuberous Sclerosis Center of Excellence
- Global health activities
- Dual training options for Med/Peds Fellows
- Promote advanced training to meet individual career goals

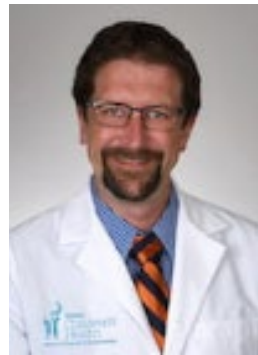


Pediatric Nephrology Fellowship

Pediatric Nephrology Faculty



Katherine Twombly, M.D.
Division Chief & Fellowship
Program Director
Medical Director, Pediatric
Kidney Transplant



Dave Selewski, M.D.
Director, Acute Care
Services



Anita Tambay Perez, M.D.



Ali Annaim, M.D.



Kelly Garrity, M.D.



Gina Aeckersberg, M.D.
Current Fellow



Natalie Pudalov, M.D.
Current Fellow

Program Highlights

Clinical Training

- Our division of nephrology and the division of transplant surgery have established the only multidisciplinary pediatric kidney transplant clinic in the state of South Carolina, which offers care to children who are being evaluated for a kidney transplant as well as those who are post-transplant
- We provide extensive training on children with chronic renal failure and end-stage renal disease.
- Taught by a highly skilled team offering hemodialysis, peritoneal dialysis, and renal transplant.

Education

- Unique fellowship schedule with research starting your first year.
- 1 categorical pediatric fellowship position per year
- Faculty in our division maintain membership in the Pediatric Nephrology Research Consortium (PNRC). As a fellow you will have the chance to work with a nationwide group of pediatric nephrology care team members

Example of a 3 Year Fellow Schedule

	Block 1	Block 2	Block 3	Block 4	Block 5	Block 6	Block 7	Block 8	Block 9	Block 10	Block 11	Block 12	Block 13	Inpatient	Research	Outpatient
	Jul 1st - Jul 28th	July 29th - Aug 25th	Aug 26th - Sept 22nd	Sept 23rd - Oct 20th	Oct 21st - Nov 17th	Nov 18th - Dec 15th	Dec 16th - Jan 12th	Jan 13th - Feb 9th	Feb 10th - Mar 9th	Mar 10th - Apr 6th	Apr 7th - May 4th	May 5th - Jun 1st	Jun 2nd - Jun 29th			
PGY4	R/OP	IP	R/OP	R/OP	R/OP	IP	R/OP	R/OP	IP	R/OP	R/OP	R/OP	IP	16 weeks	27 weeks	9 weeks
PGY5	R/OP	IP	R/OP	R/OP	IP	R/OP	R/OP	R/OP	R/OP	IP	R/OP	R/OP	R/OP	12 weeks	27 weeks	10 weeks
PGY6	IP	R/OP	R/OP	R/OP	R/OP	IP	R/OP	R/OP	IP	R/OP	R/OP	R/OP	R/OP	12 weeks	27 weeks	10 weeks



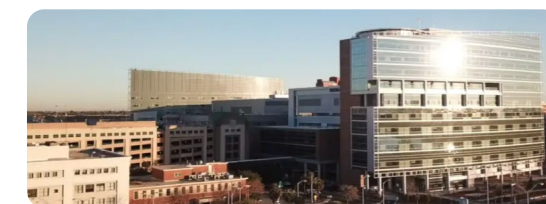
Peds Nephrology Team
Dinner



DCI Dialysis Clinic



Summey Medical Pavilion



Shawn Jenkins Children's Hospital



Children's Hospital of Pittsburgh Pediatric Nephrology Fellowship

Program Highlights

- Extensive clinical training in pediatric nephrology including high volume transplant and acute dialysis programs
- Outstanding mentorship and research opportunities across the Pitt campus in basic, translational and clinical research
- Weekly educational conferences
- Opportunities for combined training in adult and pediatric nephrology



Learn more:

[CHP Pediatric Nephrology Fellowship](#)

[LinkedIn](#)

[Instagram: chpnephrology](#)

[Visit Pittsburgh](#)



Program Director:
Jackie Ho
jacqueline.ho2@chp.edu

Program Coordinator:
May Hurtado
hurtadom2@upmc.edu



University of Iowa Pediatric Nephrology Fellowship



University of Iowa Stead Family Children's Hospital

- 190+ pediatric beds (expanding)
- Advanced therapies: CRRT, Aquapheresis, Carpe Diem, Kidney transplant, ECMO, VAD, Heart transplant, BMT, etc.
- Only Pediatric Nephrology Group in Iowa
- 30-40 pediatric subspecialty trainees

Division Stats

- Dialysis: >300 CRRT days/year + only chronic iHD and PD site in the state
- Kidney Transplantation: 8-12/year
- Inpatient Service/Consultation Service: >400/year
- Kidney Biopsies: >50/year
- ABPMs: >100/year

Our Team



Dr. Carla Nester – Program Director
Dr. Amy Strong – Associate Program Director

Dr. Kathy Lee-Son
Dr. Lyndsay Harshman
Dr. Jason Misurac
Dr. Kyle Merrill
Dr. Linda Sun

Dr. Michael Michalopoulos
Dr. Stephanie Houston
Brynna Van Wyk, ARNP
Christina Michels, ARNP
Stephanie Clark, ARNP

Expertise within the Division

- Research in C3GN and glomerular disease, AKI and critical care nephrology, podocytopathies, neurocognitive effects of CKD, and tuberous sclerosis
- Quality Improvement, Safety and Healthcare Improvements
- Informatics and AI Initiatives

Supporting Team Members

- Program Coordinator: Nicole Feters
- Nephrology Nurses: Emily Neeld, Teresa Bertelli, Emily Bahndorf, Katie Kass, Lindsey Wetjen
- Dialysis Nurses: Jen Ehrlich and Amy Beckman, Heather Baker, Rachelle Hammerand, Sara Hatch, Betsy Stumpf, Holly Jakobi
- Transplant Team: Melissa Thompson and Abby Henderson
- Ped Neph Dietician: Rachel Beiler-Funmilayo
- Ped Neph Social Work: Marcia Gilbert and Ellie Van Holland



Living in Iowa City

- One of the 10 best places to live in America (based on size, amenities, economy, healthcare, and housing)
- Easy commutes, good schools, vibrant and safe communities
- Outstanding parks, restaurants, and children's activities, along with many annual events: Jazz fest, Arts fest, BBQ & Blues fest, Brrrfest, RAGBRAI, and many others!



Pediatric Nephrology Fellowship Program Highlights

Clinical Care Training

- We are the primary service for our nephrology patients
 - 20-25 chronic dialysis patients
 - At least 10-12 kidney transplants/yr
 - We perform our own procedures:
 - 50 kidney biopsies/yr
 - CKRT > 700 days/yr
 - Aquapheresis for infants
 - Apheresis ~400 sessions per year
 - >70 ambulatory BP monitorings/yr
- Allied Rotations
- Renal Pathology
 - Urology
 - Radiology
- Multidisciplinary Clinics
- Urology/Nephrology
 - Lupus/Vasculitis
 - Midaortic Syndrome & Renovascular HTN
 - Vascular Function Clinic (CiMT, FMD)
 - Fontan clinic
 - Adult/Pediatric Nephrology Transition Clinic

Mentorship

- 9 clinical and research nephrology division faculty
- All our recent fellows have presented an accepted first author abstract at a national meeting in their 3rd year
- Faculty are involved in national society committees and collaborative studies, with opportunities for fellow engagement
- 7 prior trainees rose to division chief positions

Facebook: wustlpedsnephrology
Twitter/X: WashU_PedsNeph
Instagram: washupedsnephrology



Research Experience

- We are an NIH Pediatric Center for Excellent in Nephrology
- Faculty members hold multiple extramural research grants from NIH and foundations in multiple areas: bone/mineral disease in CKD, vascular biology, kidney transplantation, lupus nephritis
- 18-30 publications/year by our division!
- Opportunities to participate in multicenter collaboratives for scholarly activity
 - Research: NAPRTCS, CureGN, NEPTUNE, CKiD, WE ROCK, PNRC
 - QI: IROC, SCOPE
- Funds to attend conferences
- Departmental T32 funding or MSCI degree available



Environment & Education

- 9 pediatric nephrologists with complementary interests, 2 with dual fellowship certification (nephrology/critical care and nephrology/neonatology)
- Local and national nephrology advocacy opportunities
- Contiguous facility with adult Barnes-Jewish Hospital with elective opportunities within adult nephrology (stone, PKD/TSC, living donor evaluation, and lupus/GN clinics)
- Well developed educational curriculum and weekly conferences for fellows
- Many opportunities for educating medical students and residents
 - Team-based learning workshops for Phase 2 and 3 WUSM students
 - Resident morning report and noon conferences
- Ability to participate in WashU Academy of Educators programming for fellows with a strong interest in medical education (e.g. Foundations in Teaching Skills)