

Boston Medical Center

Over 65 passionate, committed and kind professionals from a wide variety of programs!

Programs in DBP:



Autism Program
Comprehensive Care Program
Good Grief Program
Child Witness to Violence
NICU Follow up Program
Child Protection Team
Supporting Our Families through
Addiction and Recovery (SOFAR)
Grow Clinic
The Massachusetts Center For Sudden
and Unexpected Infant and Child Death
Center for Immigrant Infant and Early
Childhood Mental Health

DBP Faculty

Marilyn Augustyn, MD	Mary Ellen Killion, NP
Audrey Christiansen, MD	Christina Lazdowsky NP
Arathi Reddy, DO	Rachel Amgott NP
Arielle Spellun, MD	Neena McConnico, PhD
Sarah Canale, MD	Carmen Rosa Norona,
Mei Elansary, MD MPhil	LICSW, Ms. Ed
Deborah A Frank, MD	Shari Krauss MPH
Sue Minear, MD	

Program Highlights

- **Emphasis on health equity and diversity**
- **Clinical training**
 - **Emphasis on clinical excellence and administration of developmental testing**
 - **Rotations in Neurology, psychiatry, baby steps, SOFAR, feeding clinic, Grow clinic, Genetics**
- **Education**
 - **Weekly Division Director rounds and literature seminars**
 - **Advocacy; Quality improvement**
 - **Participation in -LEND certificate program**
 - **Formal and informal teaching of residents and medical students**
 - **Presentation at CME conference in 3rd year**
- **Research**
 - **Monthly research seminars**
 - **Scholar Oversight 2 times per year**
 - **Protected Research time throughout all 3 years**
 - **Fellow lead QI project**



View our recruitment video at the following link! https://drive.google.com/file/d/1hAUJz90P5s8p1wX2wc_XE3WD9h99QxK6/view?usp=sharing

View our website at the following link! <https://www.bmc.org/developmental-and-behavioral-pediatrics-training-program>

For more information contact:
Audrey.Christiansen@bmc.org

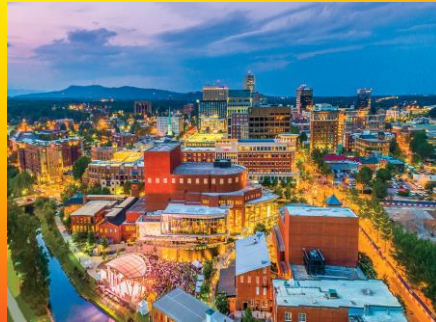
BMC is the largest safety-net hospital in New England and has a long-standing commitment to providing accessible, community-oriented health services to all in need regardless of their status or ability to pay.



EXCEPTIONAL CARE. WITHOUT EXCEPTION.

Developmental Behavioral Pediatric Fellowship Greenville, SC

- Endowment supported
- 8 DBPeds faculty
- Team of nurse practitioners, social workers, nurses, child life and even a facility dog!
- Wide range of clinical training (autism, ADHD, NICU follow up, psychopharmacology)
- Interdisciplinary collaboration (psychology, psychiatry, sleep medicine, genetics, neurology)
- LEND program
- Research training and support
- Educational sessions (didactics, Book Club, Board Review)
- Teaching opportunities with residents and students



Faculty

Karen Ratliff-Schaub, MD
Program Director
Desmond Kelly, MD Associate
Program Director
Anne Kinsman, PhD
Tara Cancellaro, MD*
Steven Ma, MD*
Charles Hatcher, MD*
Darla McCain, MD*
Kristina Bates, PhD
Julie Maldonado, PhD
Meghan Doyle, MD*
Nancy Powers, MD
Sara Lilly, MD*
* Program Graduate

<https://academics.prismahealth.org/graduate-medical-education/fellowships/developmental-behavioral-pediatrics-greenville>



University of Minnesota Developmental-Behavioral Pediatrics Fellowship

Andy Barnes, MD, MPH
Program Director



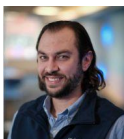
Jenni Lessin, MD
Faculty - UMMCH



Betsy Murray, MD, MPH
Assistant Dean for Curriculum - Medical School



Adam Langefeld, MD, PhD
Faculty - Children's MN



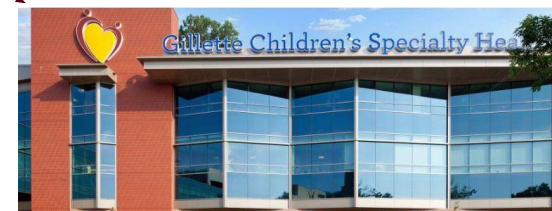
Molly Sajady, DO
Faculty - Children's MN



Art Beisang, MD
Faculty - Gillette



- One of the longest-running DBP programs nationally
- The Masonic Institute of the Developing Brain (MIDB), opened in late 2021, has been fostering new collaborative relationships
- Training sites include the University of Minnesota Masonic Children's Hospital & Clinics (primary training site w/~4000 annual patient visits), Children's Minnesota, and Gillette Children's Specialty Healthcare.
- ~Four, ½ day, DBP continuity clinics/week where the fellow follows ~60 pts for duration of training
- Interprofessional training in advocacy & policy through participation in LEND and related activities including early intervention & transitions to adulthood
- 40-60% scholarly activity across 36 months, depending on trainees' individual needs and career development
- Clinical programs include Fragile X, Adoption, Birth to Three, Autism&NDD



z.umn.edu/DBPFellowship

Andy Barnes, MD, MPH
drbarnes@umn.edu

MASONIC CHILDREN'S HOSPITAL

1

Contact: DBPfellowship@nationwidechildrens.org
PD: Katherine.Steingass@nationwidechildrens.org
PC: Ashley.peaslee@nationwidechildrens.org

Nationwide Children's Hospital

Developmental Behavioral Pediatrics Fellowship



A taste of the NCH DBP culture

Program highlights

- Interdisciplinary department, clinics, and case conferences
- Specialty team clinics and programs: Down Syndrome, Williams Syndrome, Spina Bifida, Cerebral Palsy, 22q, NICU f/u, and more!
- >8000 appts in 2023 with patients from all over Ohio and out of state
- The Ohio State University Nisonger Center & LEND Program (<https://nisonger.osu.edu/>)
- Current fellow scholarly projects:
 - Correlates of parental stress in patients seen in a DBP Clinic
 - Participation in referrals following a failed M-CHAT
 - Relationship between telehealth availability and completed DBP visits
- Other scholarly opportunities: Masters degree, resident teaching, quality improvement, presentations at national meetings
- Fast-growing midwest metropolitan area with low cost of living

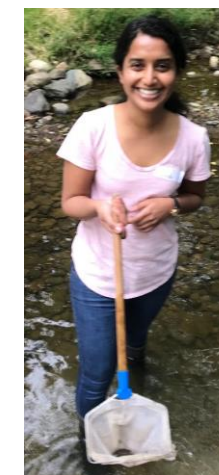


Fellow Graduation



Holiday fun

Myelo Camp



Chocolate Fountain Parties



View of downtown
Columbus, OH from
DBP offices

Learn more about
our program:



NATIONWIDE CHILDREN'S
When your child needs a hospital, everything matters.

Baylor College of Medicine/Texas Children's Hospital Developmental-Behavioral Pediatrics Fellowship



DBP FACULTY

Kathryn Ostermaier, MD
Division Chief



Holly Harris, MD
Program Director



Noel Mensah-Bonsu, MD
Associate Program Director



Clinical Mentors

JB Swanson-Zamora, MD
Anson Koshy, MD
Janki Patel, DO
Sonia Monteiro, MD
Steven Lazar, MD, MEd



CLINICAL TRAINING HIGHLIGHTS

→ Core Longitudinal experiences

- Autism Center
- School-aged Clinic
- NICU follow up
- Community Health Center
- Psychopharmacology



→ **Core Rotations:** Neurology, Genetics, PM&R, Down Syndrome, Fragile X, Community Advocacy, Healthcare Transition, Psychology
→ **Elective opportunities:** Cardiac Developmental Outcomes, Sleep Medicine, Neurogenetics (e.g. Angelman, Rett), Movement Disorders, Traumatic Brain Injury, Muscular Dystrophy, Child Abuse, Foster Care, Spina Bifida, Cerebral Palsy

→ **DBP Training Grant Recipient (MCHB/HRSA Funded Program):**
Fellows attend annual MCHB meeting and build connections with other funded programs and AUCD



EDUCATION HIGHLIGHTS

→ Weekly half day of education

- Case staffing and board prep
- Local or guest lecturers

→ LEND (Leadership in Neurodevelopmental Disabilities)

Program alongside UT Houston

→ iCOR (International Collaborative Office Rounds)

→ Fellow teaching roles in resident primary care clinic and community health clinic

→ Opportunities for advanced degrees (MPH, MEd)



RESEARCH HIGHLIGHTS

→ Faculty working in diverse areas including Fragile X, Down Syndrome, Clinical trials in rare genetic disorders, Cardiac Developmental Outcomes, Epidemiology of Developmental Disorders

→ One of 14 IDDRC sites (Intellectual and Developmental Disabilities Research Centers)

→ Kochel Lab for Autism Research

→ Member of DBPNet

<https://www.bcm.edu/departments/pediatrics/divisions-and-centers/developmental-pediatrics/education/developmental-behavioral-pediatrics>

Contact: Holly.Harris@bcm.edu if questions or for more information!

University of Michigan Developmental Behavioral Pediatrics Fellowship Program



Faculty

Barbara Felt MD PD

Prachi Shah MD APD

Kim Levitt MD AsPD

Jenny Radesky MD Div Dr

Megan Pesch MD

Tiffany Munzer MD

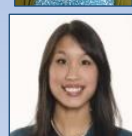
Lauren O'Connell MD

Krystal Chan Zlatopolsky MD

Julie Lumeng MD Res D

Niko Kaciroti PhD

Emerita: B Lozoff MD, Adjunct: K Rosenblum PhD,
J Turner MD, N Soares MD, N Hamp MD



Website: <https://medicine.umich.edu/dept/pediatrics/divisions/developmental-behavioral-pediatrics/medical-training-education/developmental-behavioral-fellowship-program>
PC Katie Thompson contact: thomkath@med.umich.edu

Program Highlights

- Midwest program; MCHB funded
- Clinical training
 - Mott and affiliated sites: Autism Collaborative; CMV; Early-child and development; Elimination; FASD; Rural outreach, School-age; Sleep; Transition. Fellow-led clinics
 - Ypsilanti HC – embedded in primary care
 - 7 rotations with allied services
- Education
 - Pillars: Advocacy; DEI; Life course-Transition; Quality improvement; Research; Rural-Telehealth; Trauma-informed care-Reflective practice;
 - Medical-legal partnership
 - Thrive while training - wellness
 - MI-LEND medium and long-term training
- Scholarly themes
 - Biological-developmental-contextual determinants of early feeding practices; cCMV and developmental outcomes; curiosity; digital media; iron deficiency; mobile device use and attachment; obesity; outcomes after prematurity; research-policy and digital media use; sleep disorders.
 - **We work to support fellow scholarly interests**

The Environment

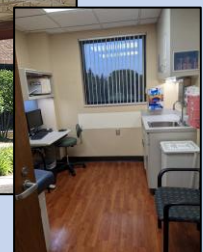
A great place to live!



The Mott Hospital



The Ypsilanti Health Center



University of Rochester (Rochester, NY)

Developmental Behavioral Pediatrics Fellowship Program

WWW: <http://pediatrics.urmc.edu/dbp>

For more information contact: Marlene LaDuke

Marlene_laduke@urmc.Rochester.edu

Faculty



Abigail Kroening, MD
Program Director
LEND Medicine Discipline Coordinator



Steve Sulkes, MD
Assistant Program Director



Emily Knight, MD, PhD
Fellowship Research Mentor/Faculty



Marlene LaDuke
Fellowship Administrator



Dennis Kuo, MD, MHS
Division Chief



Susan Hyman, MD
Division Chief Emerita



Jennifer Nguyen, MD
NDD faculty



Laura Silverman, PhD
LEND Director

Program Highlights

- 1 Fellow per Year
- LEND/HRSA long term training funding
- Endowed research support
- Optional pathways
(Education/Research/Advocacy & Policy)

Clinical Training

- Autism Collaborative: Physical Disabilities; NICU Follow-Up; FASD and Trauma; Feeding Disorders; Behavioral Health; Complex Med Management
- Electives in Neurology/Neurogenetics, Sleep Medicine; Chronic Care Coordination

Education

- Weekly didactic sessions
- LEND Training with Family Experience
- State/Federal Legislative Advocacy
- Opportunities to teach medical students/residents

Scholarly Themes (Recent Years)

- DBP Health inequities in Historically Excluded Communities (Deaf/Latinx/Refugee)
- Early Intervention Referral and Linkage
- Educator Understanding of Developmental Disabilities
- Recreation & Obesity Prevention
- Sensory Perception in Autism Spectrum Disorder

The Environment



The Finger Lakes



High Falls

Trainee Experience



Golisano Children's Hospital/DBP Clinic



Stanford University Developmental-Behavioral Pediatrics Fellowship Program

Program Leaders

Lynne Huffman MD - PD
Heidi Feldman MD PhD - APD
Lauren Goddi BA - PC

Program Highlights

MCHB-funded 3-year
program; 1-2 fellows/year
Interdisciplinary, cross-
university faculty
Strong departmental support
Diverse patient population

Program Aims

- Fellows taught to provide clinical care that is compassionate, comprehensive, and effective for diagnosis and treatment of developmental, behavioral, and mental health conditions
- Through research training, fellows develop fundamental skills in research design, methods, data collection/analysis, and communication
- Teaching skills cultivated through didactics as well as direct experience precepting residents and leading case-based learning discussions
- Fellows guided in pursuit of advocacy opportunities at patient, health care system, community, and regional levels



Lucile Packard
Children's Hospital
Stanford

Website: <https://dbpeds.stanford.edu/education/dbp-fellowship.html>

Children's Hospital Los Angeles Developmental-Behavioral Pediatrics Fellowship



Keck School of
Medicine of USC

Our DBP Faculty

Douglas Vanderbilt

David Schonfeld

Josh Kallman

Karen Kay Imagawa

Larry Yin

Sai Kumar



Program Opportunities

1. Fellows as Care Providers

- Autism Team, Private Practice, Primary Care Consultation, NICU Follow up, Early Childhood, Psychopharm
- Public and Private insurance
- Collaboration with multiple hospital divisions and a federally qualified health center (AltaMed)

2. Fellows as Scholars

- Autism Care Network and DBPNet projects
- Support for biostats and manuscript submissions

3. Fellows as Advocates

- Leadership Education in Neurodevelopmental Disabilities training (years 1 and 2)
- Diverse patient population, diverse workforce

4. Fellows as Educators

- Pathway of learners (Medical Students, Residents, Fellows)
- Over 15 disciplines beyond the many pediatric subspecialties



Our DBP Fellows

Peter Hong

Nicole Nghiem

Jasmine Ke

Maggie Dade

Zvart Abaryan

Come train to be a DBP in a
dynamic environment as you
say goodbye to winter...



For more details and our video see the website:

www.chla.org/fellowship/developmental-behavioral-fellowship

For more info contact: Douglas Vanderbilt @

dvanderbilt@chla.usc.edu



Faculty and Fellows

Program Highlights

Environment

Program Director: Jill Fussell, MD



Angie Scott, MD, PhD

Kevin Aranas, MD (fellow)



Associate PD: Maya Lopez, MD

Shruti Tewar, MBBS



Jayne Bellando, PhD

Paulette Wy, MD

Claire Foster, MD, MPH (fellow) & daughter Mimi Frances



daughter Mimi Frances

Kim Macferran, MD



Maggie Houssay, MD (recent grad) & daughter Martina

Clinical training

- Diagnostic assessments for autism spectrum and other developmental concerns, NICU follow up, DBP management of medically complex patients
- Meaningful experiences in related subspecialties (genetics, neurology, psychology, physical medicine/Rehabilitation)

Education

- 2 federally-funded training grants (Leadership Education in Neurodevelopmental Disabilities and DBP)
- Weekly didactic experiences (as learner, and as facilitator), coordinated with psychology fellows
- Departmental fellows' Core Curriculum planned by the DBP PD, who is also Vice Chair of Fellowship Education

Scholarly themes

- Autism (site for CDC prevalence national study, site in DBPNet Research Network)
- Rural, underserved populations
- Medical Education
- We support fellows individualized research interests

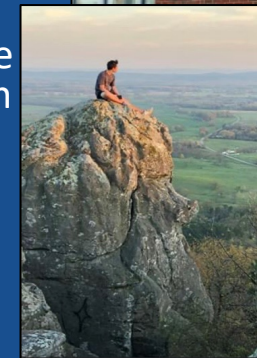
Click here to learn more on the [UAMS DBP fellowship website](#)

[Learn more about Little Rock](#)

Arkansas Children's Hospital



Dennis Developmental Center



Little Rock is fun and affordable, AR is "The Natural State"



Colorado DBP Fellowship

Fellowship Leadership

Abigail Angulo, MD, MPH
Fellowship Director



Meghan Breheney, MD
Associate Fellowship Director

Judy Reaven, PhD
Director of Research



Clinical Team

9 Physicians 3 APPs

24 Psychologists

3 Social Workers

Incl. 3 Bilingual Psychologists

1 Care Coordinator

2 Genetic Counselors

8 MAs/RNs

1 Pharmacist

1 Child Life Specialist

1 Health Navigator

Integrated ST, OT, PT



Affiliated with
University of Colorado
Anschutz Medical Campus

Program Highlights

Diagnostic and Treatment Clinics:

- Interdisciplinary clinics
- Single discipline evaluations
- Medication management
- Follow-up clinics
- Transition Clinic

Clinical Highlights:

- Infant to Adulthood Clinical Consultations
- Primary Care Integrated Clinics
- Sie Center for Down syndrome
- NICU Follow-up Clinic

Community-Based Curriculum

- Early Intervention
- Developmental Preschools

Strong Fellow Support for Research projects:

- Clinical: Quantitative and Qualitative
- Community engagement
- Implementation science
- Basic science

Education:

- LEND curriculum
- Education didactics
- Research curriculum
- Teaching Scholars Program

Diversity, Equity & Inclusion

<https://medschool.cuanschutz.edu/pediatrics/about-us/diversity-equity-and-inclusion>

Annual SDBP Meeting 2022



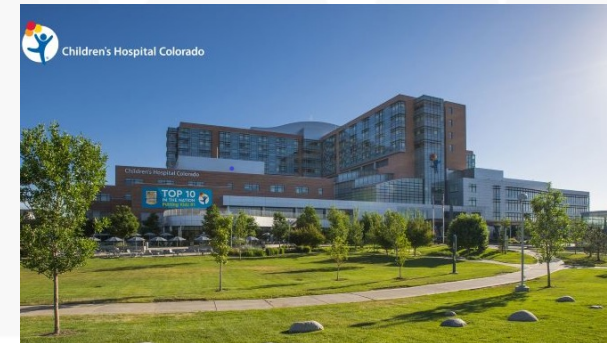
LEND/JFK Partners:

<https://medschool.cuanschutz.edu/jfk-partners>

Fellow Graduation Party



The Hospital



More information can be found on
the Fellowship Website:

<https://medschool.cuanschutz.edu/pediatrics/sections/developmental-pediatrics/fellowship>

Questions? Email: Kimberly.Mondragon@childrenscolorado.org

University of California San Diego

Developmental-Behavioral Pediatrics Fellowship Program

Program Highlights/Opportunities

MCHB/HRSA funded

Clinical Training in Multiple Systems of Care

- University – UCSD DBP Clinic
- Military – Naval Medical Center San Diego DBP Clinic
- HMO – Kaiser Permanente DBP Clinic
- Children's Hospital - Rady Children's Hospital San Diego
- Federally Qualified Health Center - San Ysidro Health Center DBP Clinic
- Govt Early Intervention/Developmental Disabilities - San Diego Regional Center
- Law - University of San Diego Education & Disability Law Clinic
- Rotations & Electives - Developmental Services, Neurology, Genetics, Down Syndrome Clinic, Turner Syndrome Clinic, Child & Adolescent Psychiatry, High Risk Infant Follow Up, Sleep Medicine, Autism Discovery Institute

Education

- Weekly DBP Fellows Conference
- Joint conference with child psychiatry, neurology
- San Diego LEND program – Leadership Education in Neurodevelopmental and Related Disabilities
- Journal Club
- Autism Series
- FACET Track – Fellow as Clinician Educator

Scholarly Work/Research

- Pediatric MD Fellow Research Seminar
- Clinical Research Enhancement through Supplemental Training (CREST) Program
- INQUIRY QI Curriculum



To learn more about our UCSD DBP Fellowship Program
Visit us at:

[https://medschool.ucsd.edu/som/pediatrics/Divisions/AND/
Education/DBP-Fellowship/Pages/default.aspx](https://medschool.ucsd.edu/som/pediatrics/Divisions/AND/Education/DBP-Fellowship/Pages/default.aspx)

Contact:

Jannese Ardilla, DBP Fellowship Coordinator

jardilla@health.ucsd.edu

858-246-0794

Faculty

Yi Hui Liu, MD MPH (UCSD)
Program Director

Lauren Gist, MD MPH
Associate Program Director

UCSD

Adam Braddock, MD
Teddy Nelson, MD
Carolyn Sawyer, MD
Martin Stein, MD - Emeritus

Naval Medical Center

Kristopher Kazlauskas, MD MPH
Tony Kuleto, MD

Kaiser Permanente

Nidia Alduncin, MD
Chadley Huebner, MD MPH
Rachel Ireland, MD



UC San Diego
SCHOOL OF MEDICINE

Developmental Behavioral Pediatrics Fellowship Program



DBP Faculty

Jessica E. A. Foster, MD, MPH

Division Director

Diane L. Langkamp, MD, MPH - PD

Kristen Stefanski, MD - APD

Jackie Branch, MD

Catherine Scherer, DO

Nick Skiviat, DO

Dan Smith, MD



Website for Fellowship Information & Video:

<https://tinyurl.com/39np7jd9>

Anna M. Dusseau
Program Coordinator
adusseau@akronchildrens.org

Located within the NeuroDevelopmental Science Center, an interprofessional department, that includes pediatric neurology, neurosurgery, physical medicine & rehabilitation (PM&R)/physiatry, psychology, and neurobehavioral health

Clinical Training

- Experiences in multidisciplinary clinics: Down Syndrome, Neonatal Follow-Up, Autism Diagnostic, School Success, Myelodysplasia, Neurofibromatosis and Single Ventricle LIFT, among others
- Triple P® Certification for all fellows
- Fellows have their own patient population in twice weekly continuity clinics, one-on-one supervision; incorporating telehealth practices with a diverse patient population
- Fellowship wellness resources/events throughout the year

Education

- Biostatistics and Epidemiology Courses through Northeast Ohio Medical University through the CEOMPH program, for those without a MPH
- Faculty and research mentors for each fellow along the way
- Support for fellow scholarly activities is augmented with monthly didactics and assistance from our own Research Institute, with funding support
- Electives and focused learning opportunities are included
- Attend at least one national conference per year

Scholarly Themes

- Health services in Down Syndrome
- Innovations in Medical Education
- Outcomes after prematurity



Welcome to our backyard! Situated on The Towpath Trail Bridge, our local area offers beautiful walking spaces and lush green right outside, and next to the Rubber Ducks baseball stadium. We're a short distance from the Cuyahoga Valley National Park.

www.CuyahogaValleyNatlPark
www.downtownakron.com/explore





Program Highlights:

- We were among the first DBP fellowship programs accredited by ACGME in 2003. Since that time, 30 fellows have completed our program and practice across the country and the globe, primarily in academic settings.
- We are among the 13 MCHB/HRSA sponsored DBP fellowship programs, continuously funded since 2007.
- Our 1st or 2nd year fellows join RI LEND which recruits and prepares graduate-level, parent and self-advocate trainees from diverse ethnic and cultural backgrounds to become future clinical, academic and community leaders with a goal of increasing the health and wellbeing of children with autism and other related developmental disabilities.

Clinical Training

- Our primary clinical service is imbedded in the Children's Neurodevelopment Center where we practice shoulder to shoulder with colleagues in Genetics, Child Neurology, Psychology, Nursing, Social Work, Care Coordination and our Parent Consultants.
- Fellows first learn clinical skill through close observation of faculty providing care. They gradually increase their assessment including astute child-focused behavioral observation, direct testing including ADOS administration and development of a plan that is strength-based and sensitive to the family's perspective.

Education

- Our strong core curriculum includes weekly seminars (Literature Seminars, Research Symposia, QI, case discussions and didactic sessions) with full participation by faculty and fellows.
- Our fellows typically attend and often present at 2 national meetings each year.
- Our 1st year fellows can take a variety of research courses, including Biostatistics courses in Brown's School of Public Health, Dept. of Pediatrics course and others, and may also apply for the Hassenfeld Scholarship to complete a Certificate in Clinical and Translational Research.
- Fellows rotate through NICU follow-up, Genetics, Child Neurology, a Med-Psych Partial Hospital Program, Children's Rehabilitation Services with Speech, OT, PT and spasticity management, Downs Syndrome, Sleep and Fussy Baby clinics and have opportunities to select to rotate in Child Psychiatry day programs or psychopharmacology practice.

Recent Fellow's Scholarly Themes/Research

- All fellows complete a scholarly project with faculty mentorship. Themes of recent projects include:
 - Adverse Childhood Experiences and Protective Factors Associated with Behavior Problems, Developmental Delay, and Learning Concerns in Preschool Age U.S. Children
 - The Association between Race and Ethnicity and Autism Diagnosis before Age 5 among Children 6-17 years old with ASD in the United States
 - Adverse Childhood Experiences (ACEs) and Unmet Special Service Use Among US Children with Developmental-Behavioral (DB) Needs
 - Association between food insecurity and the diagnosis of developmental delay and behavioral problems in American preschool age children
 - Associations of Adverse Childhood Experiences and Protective Factors with School Engagement



Pam High MD, Program Director
Yvette Yatchmink MD PhD, Assoc. PD
Viren D'Sa, MD, Division director
Carrie Kelly MD, Director Resident Ed
Pei Chi Wu MD, Director ADOS/ASD Ed
Natalia Lukankina MD, Directs ADHD/LD



Yearly Fellowship
Graduation and Yearly
Brown Reunion at SDBP

Cincinnati Children's Developmental Behavioral Pediatrics Fellowship Program



PROGRAM LEADERSHIP

Tanya Froehlich, MD, MS, Division Director
Jayna Schumacher, MD, Fellowship Program Director
Jennifer Smith, PsyD, BCBA-D, LEND Program Director
Stephanie Weber, PsyD, LEND Training Director
Tori Webb, Program Coordinator

FACULTY PHYSICIANS

Paola Amaya de Lopez, MD
Julia Anixt, MD
Cassandra Conrad, MD
Jennifer Ehrhardt, MD, MPH
Kelly Kamimura-Nishimura, MD
Lisa Kuan, MD
Manoj Nair, MD
Harriet Valentin, MD
Susan Wiley, MD
Sara Williams, MD, MPH
Pamela Williams-Arya, MD
Jason Woodward, MD, MS

KEY PSYCHOLOGY MENTORS

Ryan Adams, PhD
Kristn Currans, PsyD
Rebekah Ridgeway, PsyD
Megan Stone-Heaberlin, PsyD

INTERDISCIPLINARY SUPPORT

APNs, Psychology, SLP, OT/PT, Nutrition, Educators,
Social Work, Child Life, Family Support Professionals

PROGRAM HIGHLIGHTS

- One of 13 MCHB-funded DBP programs in nation
- Rich exposure to wide range of DBP conditions from birth to age 21 years, rural and urban populations
- Experience in diagnostic evaluations and follow up, including medication management
- Practice with various care delivery models including single discipline evaluations, interdisciplinary team evaluations, and DBP consultant in primary care
- Training in and practice with administration of standardized developmental assessments
- Engaged faculty committed to fellow success and wellbeing
- Strong research mentorship and opportunities for scholarly work in the fellow's area of interest
- Opportunities to pursue advanced degrees in public health and medical education in collaboration with University of Cincinnati



INTERDISCIPLINARY TEAMS

- Aaron W. Perlman Center (CP, Physical Disabilities)
- Center for ADHD
- Center for Spina Bifida Care
- Comprehensive Health Evaluations for Cincinnati's Kids (CHECK) Foster Care Center
- Developmental Assessment Team for Infants and Toddlers (DATIT)
- Hearing Deafness and Research Center
- Heart Institute Neurodevelopmental and Educational Clinic (NDEC)
- Kelly O'Leary Center (TKOC) for Autism Spectrum Disorder
- MD/Psychology Fellow Arenas
- MD/SLP Arenas for < 3 yo
- Rubinstein-Taybi Syndrome Program
- School-based health clinic
- Thomas Center for Down Syndrome
- TrYAD Transition Clinic

ELECTIVES

Fellows also have the opportunity for meaningful experiences in DBP related subspecialties and programs, including Behavioral Medicine and Clinical Psychology, Child Abuse, Complex Care Center, Fragile X Syndrome Clinic, GI, Genetics, Neurology, Neurobehavioral Psychiatry, NICU Follow-up Clinic, International Adoption Center, PMR, Reading and Literacy Discovery Center, and Sleep Medicine.

EDUCATION

- Core didactics (ABP DBP Content)
- Psychopathology/psychopharmacology seminar with Child and Adolescent Psychiatry
- DBP Board preparation
- Case conference with core preceptors
- Psychopharmacology case conference
- Research curriculum including QI didactics
- Divisional DEI seminar series
- DBPs as Educators seminar series
- DBP Research Advances seminar series
- Fellow book club
- Faculty/fellow journal club
- Over 300 hours instruction/field experience in leadership, advocacy and interdisciplinary teaming through the University of Cincinnati Center for Excellence in Developmental Disabilities Leadership Education in Neurodevelopmental and related Disabilities (UCCEDD LEND) program
- ADOS®-2 Training
- Fellow teaching roles in clinic and residency rotation
- Fellow presentation opportunities to other trainees, faculty, community, and at regional and national conferences

FACULTY RESEARCH

ADHD, ASD, Down syndrome, Fragile X syndrome, Deafness/Hearing impairment, peer victimization, shared-decision making, transition to adulthood. Participation in national autism treatment network, DBPNet, and CDC-funded Spina Bifida registry.

Cincinnati Children's is dedicated to ensuring every employee, patient, family and visitor feels welcome and safe by advancing diversity, equity, and inclusion and standing against racism. We are focused on cultivating, retaining and recruiting diverse talent, and ensuring all employees have an equitable path to achieve their full potential.

LEARN MORE: cincinnatichildrens.org **CONTACT:** Jayna.Schumacher@cchmc.org **EXPLORE CINCINNATI:** [The Cincinnati Experience](#)



Our Core UCLA Team:



Moira A. Szilagyi, MD, PhD, FAAP, Chief of UCLA DBP, voted President of the AAP 2022, she has devoted her career to caring for underserved and vulnerable children.



Irene Koolwijk, MD, MPH
UCLA DBP Fellowship Director
Developmental-Behavioral Pediatrician



Rolanda Gott, MD
UCLA DBP Clinical Director
Developmental-Behavioral Pediatrician



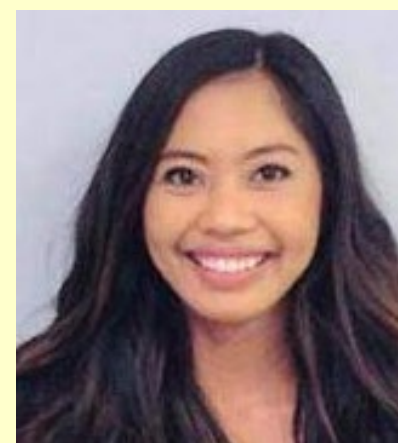
Sai Iyer, MD
UCLA HRIF Associate Medical Director
Developmental-Behavioral Pediatrician



Karin Best, PhD
Clinical Psychologist



Samantha Kucaj, PsyD
Clinical Psychologist



Jasper Estabillo, PhD
Clinical Psychologist



Delivering Acts of Kindness

We're united by shared values.



Community



Inclusion



Advocacy

JOIN A SUPPORTIVE COMMUNITY

Los Angeles

Explore your passions and interests in the most colorful city in the world.



Outdoor Activities



Music



Scenery



Food



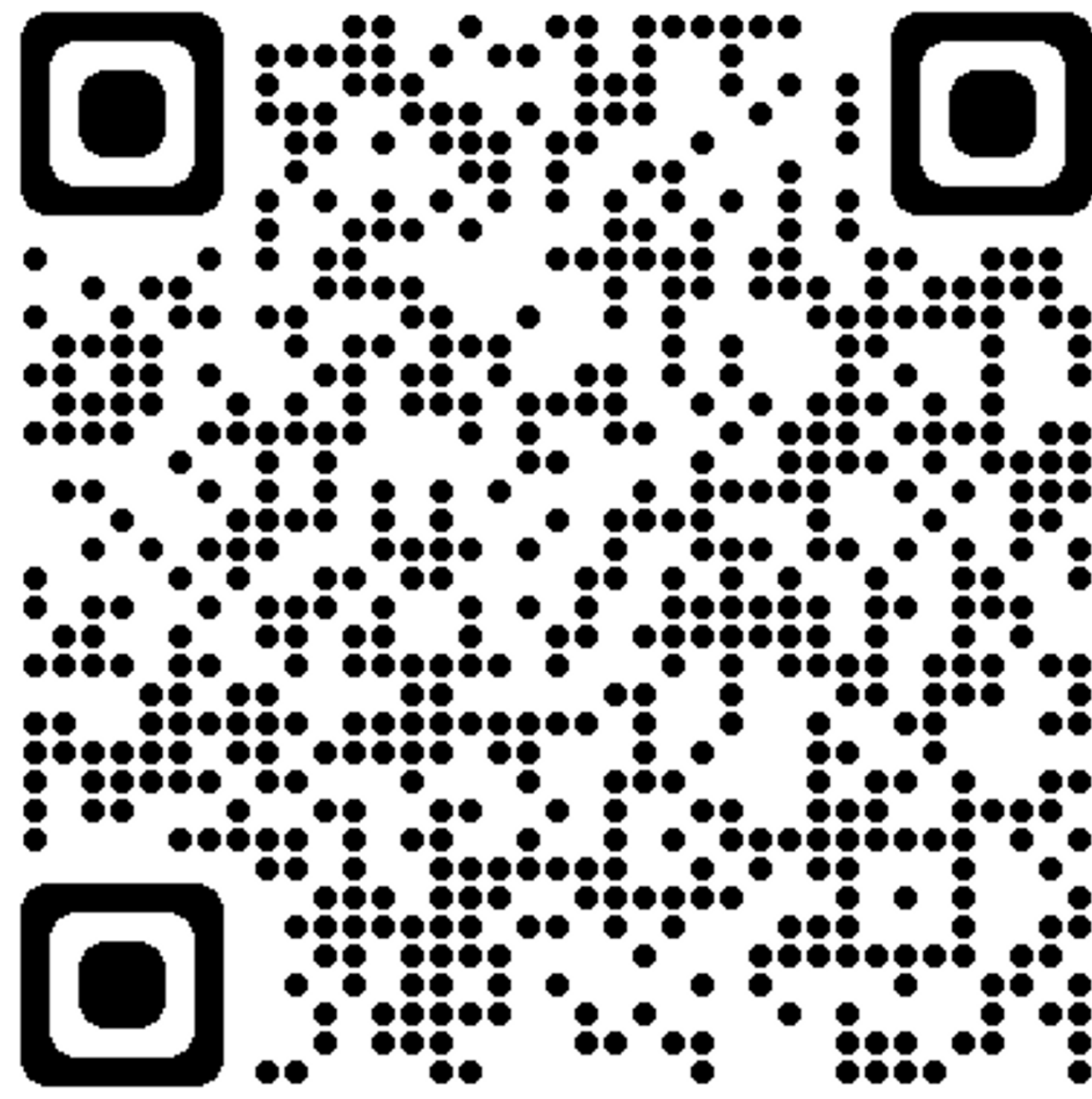
Nightlife

Our Program:

Our UCLA DBP Fellowship Program is an ACGME accredited 3-year training program, which aims to prepare fellows for academic leadership careers in the field of Developmental-Behavioral Pediatrics.

Our comprehensive curriculum provides the flexibility and guidance to pursue careers within the broad spectrum of the field of Developmental-Behavioral Pediatrics, and establishes a solid foundation in the current study and practice of this specialty.

- Interdisciplinary DBP Evaluations
- Wide variety of clinics (e.g. Neuro-Genetics, Psychopharm, HRIF, Sleep Clinic, FIT clinic, LEND clinic)
- DBP Core Lectures, Psychiatry Core Lecture Course
- Journal Club, DBP Parenting Book Club
- LEND Program - Leadership Education in Neurodiversity
- Test courses (e.g. BOSA, ADOS®-2, Bayley-4)
- Research support (e.g. statistician, research assistant)
- Community outreach (e.g. Early Intervention Program, Early Headstart Program)



Please don't hesitate to contact UCLA DBP Fellowship Director **Irene Koolwijk, MD, MPH** with any questions about our program at: ikoolwijk@mednet.ucla.edu

DBP Fellowship Yale University New Haven, CT



Clinical Breadth

- Comprehensive training
- Children & families with diverse needs

Team Approach

- Cross-disciplinary collaboration with health care specialties, schools, & community
- Medical-Legal Partnership

Teaching

- Close mentorship
- Didactic instruction in clinical management, scholarly work, & medical education

Abha Gupta, MD, PhD, Program Director
Veronica Meneses, MD, MSHS, Associate Program Director

For more information contact Dr. Meneses at
Veronica.Meneses@yale.edu

Seattle Children's Hospital and University of Washington Developmental-Behavioral Pediatrics Fellowship

Mission Statement

To improve the wellbeing of children with developmental and behavioral disabilities, their families and communities, we train developmental and behavioral pediatricians in an inclusive environment with diverse clinical and academic experiences. Our program's training is built upon the following foundational commitments:

- To value and focus on the importance of **diverse interdisciplinary collaboration** in caring for children with developmental and behavioral disabilities
- To foster a **learning environment** for our fellows that promotes scientific inquiry, cultural humility, and both personal and professional well-being
- To provide **flexible training and mentorship** that develops excellent independent subspecialty physicians and researchers who are life-long learners, educators, and advocates



Emily Myers MD, Program Director
emily.myers@seattlechildrens.org

Fellowship Webpage:
<https://sites.uw.edu/dbpeds/fellows/>

Instagram:
@uwdbpeds

Boston Children's Hospital Developmental Behavioral Pediatrics Fellowship Program

Faculty: 18 DBP Attendings and 8 Psychologists

Jennifer Aites, MD
William Barbaresi, MD
Ronald Becker, MD
Nicole Baumer, MD
Julie Bickel, MD, MPH
Eugenia Chan, MD, MPH
Meredith Close, MD
Emily Davidson, MD,
MPH
Erica Deshpande, PsyD
Katherine Driscoll, PhD
Susan Faja, PhD

Jason Fogler, PhD
Elizabeth Harstad, MD, MPH
Emily Holding, PhD
Kida Ingram, PhD
Lianna Lipton, MD
Kate Linnea, PhD
Demetra Pappas, MD, MPH
Lisa Prock, MD, MPH
Leonard Rappaport, MD, MS
Marie Reilly, MD
Sabrina Sargado, MD
Aanchal Sharma, MD
Nancy Sullivan, PhD
Laura Weissman, MD
Carol Weitzman, MD
Carol Wilkinson, MD, PhD

Program Highlights

- **MCHB/HRSA funded**
- **3 year ACGME accredited program**
- **Clinical training**
 - Trainees participate in 1-3 interdisciplinary teams per week with psychology, social work, and/or educators.
 - Specialty clinics: ASD Spoke, ADHD Spoke, Adoption Program, Down Syndrome Program, Sleep Clinic, Pains and Incontinence Program, and Advocating Success for Kids (ASK Program)
- **Education**
 - Comprehensive Weekly Didactics
 - Substance Abuse Seminar
 - Teaching Skills Seminar
 - Didactic QI curriculum
 - Summer teaching opportunities
 - Clinical Effectiveness Summer Program, Harvard School Public Health
 - Multiple teaching opportunities to observers, medical students, residents, and fellows in other disciplines
- **Scholarly Projects**
 - Each trainee develops his or her own scholarly project.
 - Informal and formal feedback is provided by research faculty, SOC members, and peers.
- **EDIBA (Equity, Diversity, Inclusion, Belonging, Access) Mission**
 - Committed to promoting equity, diversity, and inclusivity through the development of a thoughtful, deliberate, systematic approach that is comprehensive and meaningful and that can be incorporated into the fabric of our Division to produce long-lasting change.

Our Fellows



Website:

<https://www.childrenshospital.org/departments/developmental-medicine/clinician-resources/dbp-fellowship>

For more info contact: Rosetta.Mojahed-Dacey@childrens.harvard.edu



Medical University of South Carolina Developmental - Behavioral Pediatrics Fellowship



Our Team

Program Leadership

- Michelle Macias, MD (PD)
- Angela LaRosa, MD, MSCR
Division Chief and APD

DBP Faculty

- Dale Gertz, MD
- Michelle Lally, MD
- Silvia Pereira-Smith, MD

Epidemiology/Biostatistics Faculty

- Andrea Boan, PhD, MSCR, PA

Psychology Faculty and Staff

- Catherine Bradley, Ph.D
- Laura Carpenter, Ph.D
- Kasey Hamlin-Smith, Ph.D
- Margaret Hudepohl, Ph.D
- Pam Ingram, EdS
- Jordan Klein, Ph.D
- Mary Catherine Kral, PhD
- Rosmary Ros-Demarize, PhD

Social Workers

- Ashley Early, LISW-CP
- Karen van Bakergem, LISW-CP

Program Highlights



*** MCHB/HRSA Funded Fellowship and LEND program***

***Individualized Curriculum ***

***Training tomorrow's DBP Leaders ***

**** Contact****

Website: <https://medicine.musc.edu/dbp-fellowship>
Charlotte Cooke (Program Coordinator) CookeC@muscc.edu
Recruitment Link Below



Research Opportunities

- Individualized research support and Biostatistics/Epidemiology Course
- Individual Faculty and research mentors for Scholarly Project
- Wide range of research opportunities

Recent Fellows' Projects

- Primary Care implementation of RITA-T Autism screener
- Factors Associated with Language Disorder in Internationally Adopted Youth

Clinical Training Highlights

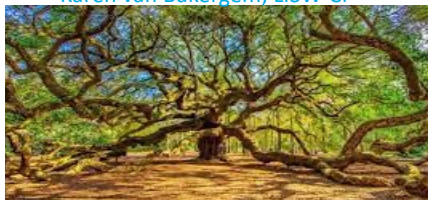
- **Weekly Continuity Clinic**
- **Core DBP Clinics:** 0-3, Preschool, School Age, ASD Evaluations, ADHD, Early ASD Dx, Medication Consultations, NICU Follow-up, Down Syndrome, Spina Bifida, International Adoption, Neurodevelopmental Cardiology, Behavioral Interventions, Cochlear Implant
- **Core External Outpatient Rotations:** Genetics, Adolescent/Foster Care, Neurology, Child Psychiatry
- **Electives:** Craniofacial, PM&R, Cerebral Palsy, Movement and Tic disorders, Sleep Medicine

Educational Experiences

- Weekly DBP Didactics and Board Review
- Monthly Collaborative Office Rounds and Journal Club
- MUSC Children's Fellowship Core Curriculum program
- Attendance at MCHB and SDBP annual conference
- Additional Conference Sponsorship available
- Optional Master's of Science in Clinical Research (MSCR) or Certificate in Clinical Research
- Tracks for Advocacy, Medical Education, Global Health
- STAT, RITA-T, ADOS certification

Community Service

- Special Olympics
- Surfers' Healing
- Buddy Walk for Down Syndrome
- Outreach Clinics



Recruitment Video: [https://urldefense.com/v3/_https://www.dropbox.com/s/wx2g1mt7sfxszk/DEV_Ped_004.mov?dl=0_!!Ab1_Rw!Sj-y0QiDmf4XEQISLwVW1WMD2u5qGmti9jLvdvEZy7zIBVCL3OW0wyQ9IE-o4\\$](https://urldefense.com/v3/_https://www.dropbox.com/s/wx2g1mt7sfxszk/DEV_Ped_004.mov?dl=0_!!Ab1_Rw!Sj-y0QiDmf4XEQISLwVW1WMD2u5qGmti9jLvdvEZy7zIBVCL3OW0wyQ9IE-o4$)