

Texas Children's Hospital | Baylor College of Medicine

Our Team

(Division of Public Health Pediatrics)

7 CAP Attendings

2 Foster Care Clinic Attendings

3 Fellows

2 NPs

1 Social Worker

Psychologist

Foster Care Coordinator

SANEs

Administrative Staff

Large Public Health Team of Researchers,
Program Staff, Nurses, Community
Health Workers focused on upstream
prevention



Highlights:

- Volume and diversity of clinical exposures
 - Inpatient consults at #1 children's hospital in Texas
 - Children's Assessment Center
 - Child Protective Health Clinic
 - Child Head Injury Program, Foster Care Clinic, At-Risk Kids Clinic
 - Dedicated research time with strong mentorship
 - Variety of electives
- Large, diverse team of faculty with varied interests
- Flexible schedule (call is not fellow-dependent!)
- Ability to participate in public health projects/child abuse prevention work
- Dual-degree opportunities
- Work "family"



Child Abuse Pediatrics Combined PEM/CAP



Connie
Christian



Amber
Hussain



Luke
Hartman



Mica
Goulbourne

Fellows

- Busy inpatient consult service
- High volume CAC (1000-1300 visits annually)
- Weekly outpatient physical abuse clinic
- Fostering Connections Program – medical home for children in out-of-home placement
- Abusive Head Trauma Long Term Follow-up Clinic
- Elective opportunities across NCH and partner agencies

Clinical Experience



- Categorical CAP & PEM/CAP programs
- Seven CAP faculty members
- Unique CAC focused on the continuum of family violence with comprehensive services
- Committed to intentional recruitment and retention of a diverse group of fellows

Fellowship Program



- Level 1 trauma center, 551 beds
- Serve diverse population central/SE Ohio
- Dedicated to addressing social determinants of health and ensuring quality, patient safety
- Stand against racism, stand for health equity
- Free-standing Behavioral Health Pavilion
- One of the nation's 10 largest free-standing research pediatric research facilities

Nationwide Children's



- 14th largest city in U.S.
- Low cost of living
- Hub of arts and culture – music, museums, festivals
- Sports town
- Vibrant neighborhoods, easy commutes



Life in Columbus



Child Abuse Pediatrics Fellowship

FELLOWSHIP

The Child Abuse Pediatrics Fellowship within **Safe Place: Center for Child Protection and Health** is a three-year program that provides trainees with the clinical, scholarship, and teaching skills needed to become academic leaders in the field of Child Abuse Pediatrics. The fellowship is in full accord with all requirements from the Accreditation Committee on Graduate Medical Education and graduates qualify for the subspecialty boards.

Clinical Care

- Broad exposure to a range of child maltreatment concerns including physical abuse, sexual abuse, neglect and medical child abuse
- Consult service
- CARE clinics in multiple settings
- Fostering Health Program

Safe Place



QI



PolicyLab



Scholarship

- Research: Faculty mentors with diverse interests, infrastructure including PolicyLab
- Quality improvement infrastructure
- If interested ask us about Masters and certificate programs at the University of Pennsylvania

Medical Education

- Opportunities at CHOP / University of Pennsylvania and in the community
- Center for Leadership and Innovation in Medical Education

Med Ed



Multidisciplinary team

- Physicians, nurses, occupational therapists, psychologists, medical assistants
- 7 faculty with different areas of focus
- 4 fellows

PROGRAM CULTURE

- Curriculum and mentorship tailored to meet the needs, interests and career goals of each fellow in a supportive, professional environment

INSTITUTION CULTURE

- At CHOP we serve a diverse patient population and seek to continue to grow a workforce that reflects the richness of this diversity and who represents a variety of perspectives, expertise and experiences
- University of Pennsylvania provides access to resources including outstanding libraries and laboratories

GEOGRAPHIC CULTURE

Philadelphia is a large, culturally dynamic, family-friendly city, full of museums, sports, theater, and history, historical landmarks, restaurants, parks





Child Abuse Pediatrics Fellowship

Children's Mercy, Kansas City



Fellows:

- Lyndsey Hultman, MD, CAP, graduates 8/24
- Ruairi Smith Dewey, DO, CAP, graduates 7/25
- Noelle Tran, MD, PEM-CAP, graduates 7/26
- Serena Wagoner, DO, CAP, graduates 7/26
- Danae Schufeldt, MD, CAP, joining 7/24

Faculty:

- Jim Anderst, MD
- Terra Frazier, DO
- Grace Gray, APRN
- Danielle Horton, MD
- Sara Kilbride, DO
- Emily Killough, MD
- Mary Moffatt, MD
- Lyndsey Hultman, MD, joining 9/24

Program Culture:

- Fortunate to have a large CAP Team - supportive colleagues, collaborative environment
- Robust GME Office - offers many educational opportunities for professional and personal development
- DEIB focus



Clinical Opportunities:

- SCAN Clinic ~ 2k outpatient visits/yr
 - Inpatient Consults > 200/yr
- CAP led SANE Team in both EDs
- Expert Case Reviews for MO & KS
- MO SAFE CARE Network Resource Center
 - KS CARE Network Founder
- MO and KS MDT Collaborations

Scholarly Opportunities:

- Research, QI
- Advocacy/Prevention
- Education
- Advanced Degree/Certificate

Kansas City – Great place to live with BIG city fun/attractions, diversity and LOW cost of living. Please check us out!



UPSTATE
MEDICAL UNIVERSITY
Pediatrics

Child Abuse Pediatrics Fellowship SUNY Upstate Medical University



Program Leadership

Alicia Pekarsky, MD, FAAP- Fellowship Program Director

Ann Botash, MD, FAAP- Assoc. Fellowship Program Director

JoAnne Race, MS- Fellowship Program Coordinator

Additional Key Team Members

Heather Ross, MD, FAAP- CAP faculty

Elizabeth Simmerman, MD, FAAP- CAP fellow

Kristin Razawich, PNP

Anne Galloway, RN, SANE

Michelle Case, LMSW

Temika McClarin, office assistant

***Faculty lead various local, State and national committees and participate in numerous scholarly activities including extramural grant funded research**

***Program focused on DEIA practices**

All 3 CAP attendings completed the AAMC Foundations of Understanding Equity, Inclusion and Bias in Academic Medicine micro-credential



Program Highlights

- Inpatient consultations at the only children's hospital in Central NY
 - Level 1 Trauma Center
- Outpatient consultations at 1 of the 2 CACs in the US to be accredited by the National Children's Alliance in all 10 of the 2024 standards
- Continuity experiences available at the Onondaga Nation Health Center and a PCMH practice located within the WELL certified Nappi Wellness Institute
- Numerous electives available including foster care medicine, Adolescent Medicine (with a focus on transgender care), Addiction Psychiatry, Toxicology, Burn Surgery, etc
- Dedicated research time with a strong research faculty
- Certificate in Public Health Principles with option of adding on MPH
- Participation in the NYS Child Abuse Medical Provider Program which includes weekly peer review and 6 webinars year

Opportunities

- Invited presentations
- CME money for travel
- Work on grants sponsored by NYS DOH and OCFS

Central NY

- LCOL with easy commutes
- Plentiful outdoor activities during all 4 seasons
- Vibrant college town
- 3-4 hour drives to Toronto, Montreal, Philly, NYC

Welcoming work environment



No call after 10 pm or on weekends



100% CAP board pass rate on 1st attempt



Indiana University School of Medicine Child Abuse Pediatrics Fellowship



- 6 faculty physicians
- 2 fellows
- 3 PNP's
- 2 RN's, 1 MA
- 4 social workers
- 4 administrative/research staff

Child Abuse Consultation Service

- Our team provides inpatient and outpatient consultations and facilitates medical evaluations for children with concerns for physical abuse or neglect. We receive referrals on > 5,000 cases annually from the Indiana Department of Child Services.

Pediatric Center of Hope

- Our team provides comprehensive medical evaluations for children with concerns for sexual abuse.

Foster Care Bridge Clinic

- Riley offers a multidisciplinary clinic to serve as a bridge – providing comprehensive healthcare and acquiring appropriate resources for children entering and making transitions within the foster care system – until a permanent medical home is identified.

Docs InCASE Program

- In collaboration with 15 pediatric practices across the state, we facilitate pediatric care and coordination in advancing the medical role in child protection.

Program Culture

The Child Protection Programs offers multidisciplinary clinical services and education to improve the evaluation and care of maltreated children. Our program's board-certified physicians provide evidence-based consultation in cases of suspected child maltreatment. Our consultations are objective assessments to help determine the extent of any injury and whether a medical cause or accidental mechanism accounts for the medical findings.

Institution Culture

IUSM is a national leader in medical research and education, with more than 60 academic departments across nine campuses statewide and strong clinical partnerships with Indiana's most advanced hospitals and physician networks. IUSM is committed to advancing culturally competent medical education, clinical care and research.

Geographic Area/Culture

Indianapolis is a family-friendly city with a wide variety of attractions. See www.visitindy.com.

Ralph Hicks, MD
Program Director
raahicks@iu.edu

Lyn Terrell
Program Coordinator
lynterre@iu.edu

Child Abuse Pediatrics Fellowship

(Dallas, TX)

The Team

Fellowship Program Director

Suzanne Dakil, MD
Suzanne.Dakil@utsouthwestern.edu

Associate PD

Kristen Reeder, MD
Kristen.Reeder@utsouthwestern.edu

Program Coordinator

Jessica Bluit
Jessica.bluit@utsouthwestern.edu

Fellow

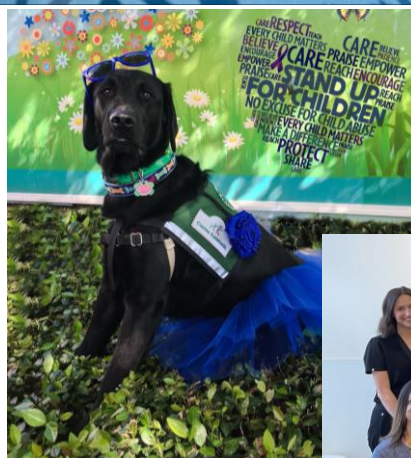
Michael Yu, MD (graduating 6/25)

Clinic family

Garrett Jones, DO
Lisa Schuster, PhD
Sandra Onyinanya, PNP
Michele Pittenger, PNP
Sarah Conant, LCSW
MA: Maribel Martinez & Angelica Segura
Florence Dontoh, RD
CCLS: Brooke Hammons, Kelsey Barber
Coordinators: Chelsea Biley, Tanya Gibson
Keaton (therapy dog) @keepingupwithkeaton



CPS, CCL and APS Child Consultations



Diverse patient experience:

- Outpatient clinic and inpatient consultations
- No in-house call; SANE coverage nights and weekends
- Longitudinal experience in foster care clinic
- Chart review for CPS across North Texas (FACN)
- Three locations for clinical service
 - [CMC Dallas campus](#)
 - [CMC Plano campus](#)
 - [Parkland Hospital](#) (world renowned burn center)

Extensive Community Partnerships

- [Dallas Children's Advocacy Center](#)
- [Children's Advocacy Center of Collin County](#)
- [Children's Advocacy Center of Rockwall County](#)
- [Children's Advocacy Center for North Texas](#)

Research and Lecturing opportunities

- collaboration with the School of Public Health (degree options available)
- dedicated research time- divided as best for your project
- Small group teaching with medical students
- Large lectures at International Crimes Against Children's Conference

Innovative and Collaborative Teaching

- UTSW fellow's curriculum (All UT Fellows)
- Fellows Academic Circle of Enrichment (CAP, DBP, and AYA)
- Texas Collaborative (with TCH, UTSA, Dell, and UTH)

Testimony opportunities

- Family Court testimony in the first year
- Criminal testimony usually in years 2 & 3

UNM FELLOWSHIP IN CHILD ABUSE PEDIATRICS



UNM CHILDREN'S HOSPITAL

ENVISIONING A WORLD WHERE CHILDREN ARE PHYSICALLY AND EMOTIONALLY HEALTHY, AND UNTOUCHED BY VIOLENCE.

REBECCA GIRARDET, MD, FAAP

FELLOWSHIP PROGRAM DIRECTOR
CLINIC DIRECTOR, PARA LOS NIÑOS
PROFESSOR, SECTION FOR CHILD SAFETY & WELL-BEING

LESLIE STRICKLER, DO, FAAP

ASSOCIATE PROGRAM DIRECTOR
CLINIC DIRECTOR, CART AND SAFE CARE NM
PROFESSOR, SECTION FOR CHILD SAFETY & WELL-BEING

MARIAH GALLEGOS

FELLOWSHIP COORDINATOR

505.272.6849

HSC-CAP-FELLOWSHIP@SALUD.UNM.EDU

ADDITIONAL TEAM MEMBERS:

CLINICAL TEAM

KAREN CAMPBELL, MD
HOLLY BURKS, CNP
LORINE DERUSHA, CNP
ASHLEY ANAYA, LCSW
ARIEL SCHAUB, LSCW

PROGRAM SPECIFICS

The UNM fellowship in child abuse pediatrics is a 3-year ACGME accredited program that prepares fellows for clinical and academic careers focused on preventing and treating family violence, neglect and exploitation. Fellows are eligible to sit for ABP subspecialty certification at the completion of the program.

New Mexico's diverse population and cultures provide a rich clinical learning environment. UNM has a strong reputation for excellence in education and quality improvement. The University also affords multiple avenues for research across designated research centers, institutes, networks, and signature programs.

CLINICAL EXPERIENCE

The fellowship program includes 24 months of clinical rotations: 10 inpatient and 8 outpatient subspecialty months, and 6 ancillary rotations in child/adolescent psychiatry, care for families with substance use disorders, pediatric and neuro radiology, pediatric physical medicine and rehabilitation, forensic pathology, and special topics in rural and tribal communities.

EDUCATIONAL EXPERIENCE AND SCHOLARLY ACTIVITY

Fellows participate in several educational activities including subspecialty journal club and board preparation, and mentoring for legal testimony. Fellows also attend 1 national conference each year.

During 12 dedicated scholarly months, fellows receive training in clinical research and quality improvement project design, and one on one mentorship with an experienced research mentor. Interested fellows also have access to multidisciplinary research networks.

Fellows also participate in **SafeCare New Mexico**, a Section led telehealth program sponsored by Project ECHO that offers education and mentorship to rural stakeholders. SafeCare's goal is to strengthen our community of practice among pediatric health care practitioners in New Mexico.

INSTITUTION CULTURE

The University of New Mexico is New Mexico's healthcare and academic medicine leader. We serve a diverse patient population and seek to educate and train a workforce that reflects our commitment to excellence and high-quality care.

ALBUQUERQUE, NM

- Home to the International Balloon Fiesta
- Historic Route 66
- Bountiful outdoor activities
- Sunshine 300+ days of the year





Maimonides Children's Hospital of Brooklyn Child Abuse Pediatrics Clinical Collaborative Fellowship

Fellows interested in a career in Child Abuse Pediatrics with an emphasis on research and clinical practice through a collaborative experience is encouraged to apply. The Child Abuse Pediatrics Fellowship at Maimonides Children's Hospital (MCH), New York University (NYU)-Bellevue Hospital and Staten Island University Hospital (SIUH) is accepting fellowship applications for their 3-year ACGME accredited program.

This program offers extensive clinical training in the field of Child Abuse Pediatrics at Maimonides Children's Hospital, the first NACHRI-certified children's hospital and only pediatric trauma center in Brooklyn. The Bellevue-NYU site is a level 1 Trauma Center, while Staten Island University has the only regional Burn Center. The Child Protection Teams at MICH, NYU, and SIUH provides full service consultations with our multidisciplinary teams. This fellowship unites the existing services at all three institutions to provide a comprehensive 3-year experience designed to prepare physicians for an academic and clinical career in child abuse pediatrics. Through a collaborative multidisciplinary team model, the service promotes safety, health, and developmental well-being in the life of the vulnerable child. Fellows will train with four Board Certified Child Abuse Pediatricians and have opportunities to work closely with a wide variety of subspecialists and community partners.

Fellows must be graduates of an ACGME accredited pediatric or medicine/pediatrics residency and be eligible to sit for the American Board of Pediatrics Board Examination. We would like 3 letters of reference: 1 must be from your residency program director and another from any Child Abuse Pediatrician that you have worked with.

We are the only fellowship program in NYC.
Our multiple training sites allows for continuity of
care for vulnerable children!



Ingrid Walker-Descartes,
MD, MPH, MBA
Fellowship Director -
Maimonides



Madeline Zito, DO
CAP Attending -
Maimonides



Lori Legano, MD
CAP Site Director –
NYU/Bellevue



Dana Kaplan, MD
CAP Site Director -
SIUH



Natasha Jouk, MD
CAP Fellow – Year 2

Child Abuse Pediatrics



*Natalie Kissoon, MD, FAAP
Program Director*



*Stephanie McMillan
Program Coordinator*

PROGRAM HIGHLIGHTS

Clinical Excellence

- Diverse patient population
- Exposure to all types of child maltreatment
- Great relationships with community partners
- Variety of clinical and case review experiences
- Weekly multidisciplinary clinical rounds

Education Focus

- Robust didactic curriculum
- Book and Conference attendance Fund
- Protected didactic time
- Access to multiple online resources developed by faculty
- Several opportunities for community outreach and presentations

Outcome Oriented

- 100% Board pass rate

OUR VALUES

Scholarship—robust project support (time and data sources)

Advocacy—TPS, Helper Society, community partners

Innovation and Improvement—Fellow input valued highly

OUR FAMILY

- 3 board certified child abuse pediatricians
- Up to 3 fellows
- 1 SANE
- 2 social workers
- Program coordinator
- Research coordinator
- Medical assistant
- Unit secretary
- Counselors

CONTACT

Email: mcmillans1@uthscsa.edu

Website: <https://isom.uthscsa.edu/pediatrics/divisions/child-abuse/>

Child Abuse Pediatrics Fellowship

Meet the Team

Judith Cerino

Program Coordinator

Judith.Cerino@uth.tmc.edu

Faculty

Michelle Ruda, MD

Program Director

Van.Michelle.Ruda@uth.tmc.edu

Simi Abraham, MD

Ashley Gibson, MD

Sheela Lahoti, MD

Fellows

Arezo Nasrazadani, MD

Harman Sawhney, MD

Dina Ahmad, MD

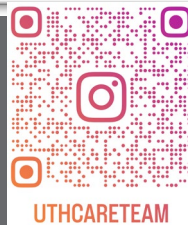


Program Highlights

- Part of the largest medical center in the world
- In the busiest level 1 trauma center in the country
- Training includes comprehensive medical and psychosocial services for child maltreatment patients
- Longitudinal care for at risk patients and families
- Dedicated clinical research curriculum with opportunity to obtain masters degree during fellowship
- Opportunities for interdisciplinary advocacy and injury prevention projects
- Large, close-knit multidisciplinary team



Follow us on



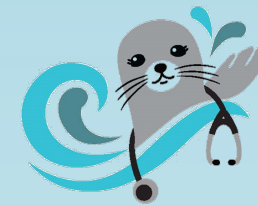
UTHCARETEAM

Children's
MEMORIAL
HERMANN



Child Abuse Pediatrics Fellowship

Lawrence A. Aubin, Sr. Child Protection Center – Providence, RI



Hasbro Children's Hospital
The Pediatric Division of Rhode Island Hospital
Lifespan. Delivering health with care®

OUR TEAM



Christine
Barron, MD



Brett
Slingsby, MD



Amy
Goldberg, MD

The Aubin Center team is comprised of a supportive group of professionals who value diversity, inclusion and collaboration. We have built strong relationships with community partners and are well known in Rhode Island as experts in Child Abuse. Our fellows play an important role within our team and we look forward to continuing to educate and train new professionals in the field.

CLINICAL EXPERIENCE

Inpatient service provides consultations for Hasbro Children's Hospital and professionals across Rhode Island

Fellows rotate weekly between clinic, consultations and scholarly activity/research

Outpatient clinic provides evaluations for sexual abuse, physical abuse, neglect, as well as DMST screening/follow up care

Weekly Education includes:

- Review of weekend consults and preparation for upcoming clinic
- Didactics
- Colposcopy and consults review

We hold weekly multidisciplinary team meetings with community partners across Rhode Island

Monthly debriefings focus on wellness and provide space for group processing of challenging cases and secondary trauma

GOALS OF FELLOWSHIP

After completion of fellowship, CAP fellows will be:

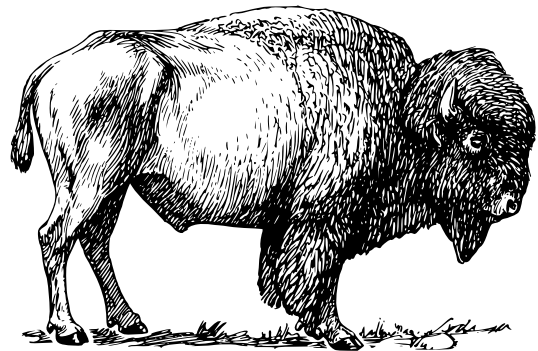
- Experts in evaluating children for all forms of child maltreatment
- Educators of child abuse and neglect for medical and non-medical audiences
- Able to critically review research and contribute to the growing body of research in child abuse pediatrics
- Able to work with and lead multidisciplinary teams

PROVIDENCE, RHODE ISLAND

- Over 400 miles of shoreline in Rhode Island
- Very diverse culinary scene
- Easy access to hiking and ski areas throughout New England
- Four distinct seasons
- Only 1 children's hospital in the state
- Culturally diverse metro area



Heather Edward, MD, Fellow
MaryAlice Brislin, MD, Fellow
Danielle Buzanga, Fellowship Coordinator
Meg Fitzgerald, Manager of Advocacy and Prevention
Kara Stock-Guild, Nurse Practitioner
Allyson Thompson, Registered Nurse
Carrie Ciccarone, Social Worker
Mimi Coleman, Advocate
Michaela Symonds, Outpatient Services Representative
CALI, Comfort Therapy Dog



The OU-TU School of Community Medicine

TULSA, OKLAHOMA

Albus the Doodledore

Therapy Dog

Program Specifics

LOCATIONS

- Children's Advocacy Center
- Saint Francis Children's Hospital
- Fostering Hope of Tulsa

DETAILS

- Academics: Every Friday
- Rotations: CAC, ME, MDT, etc.
- Research: Dedicated Staff & Curriculum
- Unique: Tulsa is part of the Cherokee, Creek, & Osage reservations. Fellows will be able to work with Federal, Tribal, and State agencies.



Tulsa Highlights

ART

Ballet, Opera, Symphony Theater, Philbrook Museum

CULTURE

Indigenous Festivals, Art/Music Festivals, Bob Dylan Museum, Woody Guthrie Museum, Cain's Ballroom

OUTDOOR

Gathering Place, State Fair, Drive-In Movies, Turkey Mountain, Tulsa Tough, Tulsa Oilers, Tulsa Drillers, FC Tulsa

Michael Baxter, DO

Program Director

Lauren Conway, DO

Faculty

Christine Beeson, DO

Faculty

Rachel Chidester, DO

Fellow

Sheryl Hayes

Program Coordinator

Amy Hendrix, MA

Research Staff



THE MAYERSON CENTER FOR SAFE AND HEALTHY CHILDREN

WHO WE ARE:

3 FT FACULTY (CAPS)

2 FELLOWS

FORENSIC NURSES

5 SOCIAL WORKERS

4 MH THERAPISTS

SUPPORT STAFF

RESEARCH STAFF

PROGRAM SPECIALISTS

PREVENTION / OUTREACH STAFF

PROGRAM SPECIFICS

- HOSPITAL-BASED CAC
- INPATIENT CONSULTS
- MCA CASES
- MH THERAPY
- FORENSIC TEAM
- WEEKLY MDT
- ADVOCACY ROTATIONS
- PREVENTION WORK
- CHILD FATALITY REVIEW
- TOXICOLOGY
- FORENSIC ROTATION
- JOURNAL CLUBS
- "ATTENDING TALK"
- RESEARCH MEETINGS
- TRAUMA INFORMED CARE WORK
- TEACHING OPPORTUNITIES
- COURT
- FACILITY DOG



CINCINNATI CHILDREN'S HOSPITAL HIGHLIGHTS

DEDICATED TO DEI AND WORK-LIFE BALANCE

LARGE RESIDENCY AND FELLOWSHIP PROGRAMS
FELLOW SPECIFIC EDUCATION AND RESEARCH

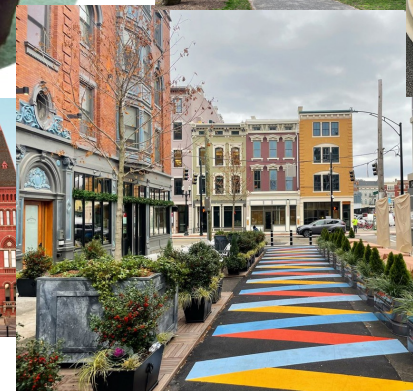
WELL-KNOWN TO CLINICAL SERVICES = OPPORTUNITY
FOR CLINICAL COLLABORATION AND RESEARCH

MASTERS PROGRAMS IN PUBLIC HEALTH AND EDUCATION

STRONG QI TRADITION



WHAT'S LIVING IN
CINCINNATI LIKE?
ULTIMATE Moving to
Cincinnati Guide



Penn State Hershey/Penn State Hershey College of Medicine-Child Abuse Pediatrics Fellowship

- 146 Bed Children's Hospital. 25,000 peds EM visits/year
- Pediatric Level 1 trauma Center.
- 300 inpatient consults/year
- Strong affiliation with NCA Accredited CAC, serving 1200 children/year with Forensic Interviews/MDTs/CAP as Medical Director
- One fellow/3 years. Close faculty relationships, 2 BC CAPS, one Gen CAP, large mental health program serving only abused children.
- Broad based education in all aspects of child abuse and neglect.
- Two fellows graduated: Gloria Lee MD (2021), Sarah Sotelo MD (2024).
- Many opportunities for education, collaboration and research.



PennState Health
Children's Hospital

Child Abuse Pediatrics Fellowship

Child Protection Team



Faculty/Staff

Denise Abdoo, PhD,
CPNP

Antonia Chiesa, MD
Rashaan Ford, MD

Dan Lindberg, MD
Laura Rosenhan, PNP
Andrew Sirotnak, MD
Coral Steffey, MD

Nichole Wallace, MD
Kathi Wells, MD

Current Fellows

Kelly Finnegan, MD
Carmelle Wallace, MD,
MPH, DTMH

Clinical Psychologists

Ashley Sward, PsyD
Dara Lynne Tabugadir,
LPC

Clinical Social Worker

Ashley Bennett, LSCW

Program specifics

- Training to become clinical, academic, and educational leaders with commitment to family-centered, culturally-sensitive, inclusive, developmentally-focused patient care and advocacy in an MDT setting.
- Clinical training experiences at Level 1 Trauma Center with statewide Network of Care and community-based CAC.
- Exemplary research mentorship and training curriculum
- Diverse clinical training settings include: consultation service, MDT AHT follow up clinic, Two Foster Care Medical Home Clinics, Interdisciplinary BH/Medical Clinic for Child Welfare and at-risk youth, PED SANE program, and community-based advocacy and collaborations
- Kempe Center active in research, state child welfare education system and active in state policy/ government affairs

Program Culture

- Close knit team supports cultivation of trainees' individual professional and personal development
- Environment values diversity, inclusion, and practice of culturally informed care
- Attunement to well-being, resilience, burnout
- Strong community presence and collaboration
- Holistic care and forensics viewed as balanced

Institution Culture

- Team members' voices recognized and vital to culture of excellence, safety, and valuing difference in quality patient care
- Committed innovative spirit, family-centered culture of caring
- Child Abuse Treatment Center of Excellence for multi-state referral region

Denver, Colorado Culture

- 300 days of sunshine yearly!
- Diverse outdoor activities
- Vibrant Arts & Cultural activities
- **Richly celebrated diverse cultural history with ~160 different languages spoken by our patient population**



Child Abuse Pediatrics Fellowship Program

Program Director Dr. Norell Rosado:
nrosado@luriechildrens.org; 312-227-6847

Program Coordinator Kelly Smith:
kelsmith@luriechildrens.org; 312-227-6313

Faculty:

- Melissa Manrique
- Jessalyn Shaw
- Annie Torres
- Research Co-Directors:
Mary Clyde Pierce
Audrey Raut

Fellows:

- 3rd year **clinical** fellows:
Nick Lopez & Will Moser
- 1st year **clinical** fellow:
Tori Close
- Incoming **clinical fellow** July 2024:
Crystal Nguyen

- ✓ Clinical-track and research-track options
- ✓ Diverse inpatient and outpatient experiences
- ✓ Electives in toxicology, neuro-critical care, adolescent medicine (substance abuse treatment, gender program), burn management & many more!
- ✓ 24/7 p-SANE coverage & robust SW support
- ✓ Located in downtown Chicago - only CAP fellowship in Illinois
- ✓ Funding for at least one fellow each year
- ✓ Monthly wellness lunches
- ✓ *Fun & supportive team!*

