

Baylor  
College of  
Medicine



### A Top Medical Center

- US News #2 Children's Hospital
- Faculty representing every career interest
- Quaternary and Community Sites
- 973-beds across all sites
- The largest free-standing pediatric hospital in the country



### An Accomplished Program

- One of the largest pediatric endocrinology training programs in the country
- ACGME accredited since 1988  
Recruiting 4 fellows per year
- Graduating fellows practicing across the country

## Pediatric Endocrinology Fellowship Program

### Program highlights

Our goal: To create the future leaders in pediatric diabetes & endocrinology through an innovative and learner-centered training environment committed to clinical excellence, quality improvement and world-class research

- Extensive clinical training in both common and rare pediatric diabetes and endocrine diseases
- Diversified training curriculum based on adult learning theories and modern educational techniques
- Offering 3 different tracks (clinical, research, educational or QI) with opportunity for pursuing an advanced degree (MPH, M.Ed. Etc.)



# Pediatric Endocrinology SUNY Downstate Health Sciences University



Clinical rotations at

1. University Hospital at Downstate
2. NYC Health & Hospitals/Kings County



## Welcome to Pediatric Endocrinology Fellowship Training Program at SUNY Downstate

We are located in central Brooklyn, NY.

Brooklyn is a self-sufficient urban center.

There are opportunities/choices for housing, education, parks & recreation, cultural resources, and shopping. Traveling to, from, or within Brooklyn is easy and convenient. We are a small-sized program and committed to providing fellow-focused clinical, didactic, and research activities.



- 1 fellow per year
- 5 board-certified pediatric endocrinologists
- 2 certified diabetes care and education specialists (nurse and nutritionist)
- 1 nurse practitioner
- 1 program coordinator
- 3-year ACGME-accredited fellowship program



For more information: Visit <https://www.downstate.edu/education-training/fellowship-residency-programs/pediatrics/fellowship/endocrinology.html> pr

Email [Vatcharapan.Umpaichitra@downstate.edu](mailto:Vatcharapan.Umpaichitra@downstate.edu)

# Massachusetts General Hospital for Children Pediatric Endocrinology Fellowship Program



**MGfC is a children's hospital within Massachusetts General Hospital. As part of the larger MGH, we provide a medical home for entire families, coordinating care and working with our colleagues to provide seamless and superb care across the lifespan.**

## Fast facts

- 2 fellows per year – *1<sup>st</sup> year shared clinical coverage*
- 15 faculty members led by Division Chief Madhu Misra, past president of the Pediatric Endocrine Society (PES)
- Wide variety of research and clinical opportunities within the larger MGH and Harvard communities

## For more information:

- Visit our website <https://www.massgeneral.org/children/pediatric-endocrinology-fellowship>
- Follow us on Twitter @mghfcendocrine

## Key contacts

- Program Director: Deborah Mitchell ([dmmitchell@mgh.harvard.edu](mailto:dmmitchell@mgh.harvard.edu))
- Associate Program Director: Rachel Whooten ([rwhooten@mgh.harvard.edu](mailto:rwhooten@mgh.harvard.edu))
- Coordinator: Nancy Radford ([nradford@mgh.harvard.edu](mailto:nradford@mgh.harvard.edu))





# Children's Hospital at Montefiore Pediatric Endocrinology & Diabetes

Albert Einstein College of Medicine  
Bronx, New York



## Mission

Our mission is to train outstanding pediatric endocrinologists with a strong foundation in the clinical, academic, and research components of pediatric endocrinology

## About the Children's Hospital at Montefiore

- ▶ The Division of Pediatric Endocrinology and Diabetes at the Children's Hospital at Montefiore (CHAM) serves the immediate Bronx community, as well as the surrounding Tri-State area and patients from around the world.
- ▶ The patient population is among the most ethnically and socioeconomically diverse in the United States, providing the optimal patient population to expose fellows to the broad presentations of endocrine conditions.
- ▶ CHAM is the only true free-standing Children's Hospital in New York City and has all pediatric subspecialties
- ▶ Out-patient clinical space for Pediatric Endocrinology is within the hospital
- ▶ CHAM Department of Pediatrics Virtual Tour: [https://virtualltour.montefiore.org/cham-pediatrics-fellowship?\\_ga=2.66118446.1003088464.1681734466-1277686899.1596041783](https://virtualltour.montefiore.org/cham-pediatrics-fellowship?_ga=2.66118446.1003088464.1681734466-1277686899.1596041783)

## Division of Pediatric Endocrinology & Diabetes



- ▶ 8 core pediatric endocrinology attendings
- ▶ 6 pediatric endocrinology fellows
- ▶ Diabetes Team (all fulltime for our Division) includes:
  - ▶ Clinical Psychologist
  - ▶ Social Worker
  - ▶ 3 Nurse Practitioners
  - ▶ 3 Registered Nurse and Certified Diabetes Care and Education Specialists
  - ▶ 2 Registered Dietitians and Certified Diabetes Care and Education Specialists
- ▶ Registered Nurse for diabetes and endocrine prior authorizations
- ▶ Physician assistant for endocrine support
- ▶ Division Manager, Program Coordinator, and two additional administrative assistants

## Contacts

- ▶ Program Director – Dr. Molly Regelman ([moregelm@montefiore.org](mailto:moregelm@montefiore.org))
- ▶ Associate Program Director – Dr. Tamar Baer ([tbaer@montefiore.org](mailto:tbaer@montefiore.org))
- ▶ Division Chief – Dr. Laurie Cohen ([lacohen@montefiore.org](mailto:lacohen@montefiore.org))

## Fellowship in Pediatric Endocrinology & Diabetes at CHAM



- ▶ 6 fellows (2 per year) – fully funded for all 3 years
- ▶ First year is primarily clinical (split equally for in-patient & out-patient)
- ▶ Second & third years have two half-day continuity clinics, and the remaining time is dedicated to scholarly projects
- ▶ Call schedules are split equally among the 6 fellows
  - ▶ Every 6<sup>th</sup> weekend (Friday-Sunday)
  - ▶ Every 6<sup>th</sup> week (Monday-Thursday nights)

## Out-Patient Experience

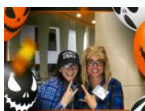
- ▶ Fellows Continuity Clinic throughout the 3 years
- ▶ Dedicated appointments for senior fellow consults (patients with rare endocrine conditions)
- ▶ Roughly 1300 diabetes visits & 3500 endocrine visits per year
- ▶ Infusion center performs stimulation testing
- ▶ Specialty Clinics within the Division of Pediatric Endocrinology:
  - ▶ Thyroid Nodule Clinic
  - ▶ TIGER Clinic (differences of sexual differentiation)
- ▶ Specialty Clinics at CHAM/Montefiore:
  - ▶ SEAD Clinic (Young Adults with Type 1 Diabetes)
  - ▶ Heart Healthy Clinic
  - ▶ Umbrella Program for Transgender and LGBTQ Youth
  - ▶ REACT Clinical Survivors of Childhood Cancer
  - ▶ Williams Clinic
  - ▶ 22q11 Clinic
  - ▶ Eating Disorder Clinic



## In-Patient Experience

- ▶ Majority of in-patient time is during the first year
- ▶ Over 400 in-patient consults per year
- ▶ Common diagnoses: diabetes and diabetes emergencies, hypoglycemia, adrenal insufficiency, hyper-/hypocalcemia, ambiguous genitalia, thyroidectomy, thyrotoxicosis

## Community Outreach



Diabetes Day at the Bronx Zoo  
Halloween Candy Exchange  
School-based Health Program



## Education

- ▶ We encourage fellows to be life-long learners and education is embedded in all clinical experiences
- ▶ Formal Educational Programming:
  - ▶ Core Summer Series (faculty review standards of care for common endocrine conditions)
  - ▶ Case-based Learning
  - ▶ Journal Club (current & classic literature)
  - ▶ Research Presentations
  - ▶ Neuroradiology Rounds
  - ▶ Adolescent Medicine & Endocrinology Cases
- ▶ Department of Pediatrics Research Course runs throughout 3 years of fellowship, including research design, quality improvement project design, and statistics, as well as preparation for life/employment after graduation
- ▶ Weekly Pediatric Grand Rounds
- ▶ Weekly Endocrinology Grand Rounds

## Research and Quality Improvement

- ▶ Fellows start to develop projects during their first year and have protected time in the second and third year to complete projects
- ▶ Opportunities for research collaborations at CHAM and at Albert Einstein College of Medicine
- ▶ Recent Examples:
  - ▶ Endocrinopathies in a Large Cohort of Pediatric Patients with Sickle Cell Disease: A Focus on Growth and the Reproductive Axis
  - ▶ Disparities in the Response to Patients and Families to Referral for Short Stature Evaluation and its Treatment
  - ▶ Vitamin D and calcium metabolism in the MIS-C patients following COVID infection
  - ▶ Assessing the Effect of Insulin Degludec on Hemoglobin A1c in an urban population of patients with type 1 and type 2 diabetes
  - ▶ The Influence of Breakfast on Hormone Responses and Cognitive Performance, as assessed by CTET in lean and obese adolescent males
  - ▶ Creating a novel humanized mouse model for Hashimoto's thyroiditis
  - ▶ Supporting Emerging Adults with Diabetes (SEAD) Program: A model for transition
- ▶ Fellows develop their own QI Projects
- ▶ Recent Examples:
  - ▶ Improving use of medical ID bracelets in children with diabetes
  - ▶ Reducing time to subcutaneous insulin administration for inpatients with diabetes
  - ▶ Educating patients about COVID-19 health risks and influences on sick day management
  - ▶ Improving post-operative monitoring and management of post-thyroidectomy hypocalcemia
- ▶ Travel to National Conferences for research presentations
- ▶ Opportunity for a 4<sup>th</sup> year Research Fellowship extension funded by the Department of Pediatrics annually
- ▶ Opportunity to enroll in Montefiore Clinical Research Training Program (CRTP)
- ▶ Opportunity to complete MPH during fellowship





## PEDIATRIC ENDOCRINOLOGY AT UB

A Pediatric Subspecialty Program Committed to Excellence in Clinical Skills, Research, and Medical Education

Established over a half-century ago, the University at Buffalo Pediatric Endocrinology Fellowship Program is the only program of its kind in the Western New York region.



Our division is involved in many clinical trials that bring the latest methods in management of diabetes and endocrine disorders to our patients. We care for nearly 1000 youth with diabetes and 5000 youth with various endocrine disorders.

Program Director:

Kathleen Bethin, MD, PhD  
[kbethin@upa.chob.edu](mailto:kbethin@upa.chob.edu)

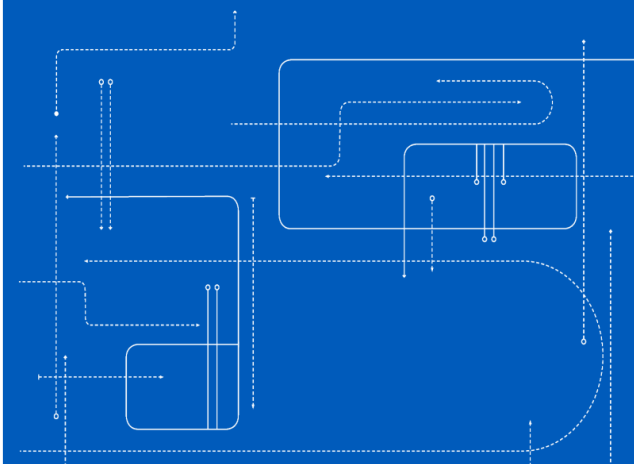
Associate Program Director:

Lucy Mastrandrea, MD, PhD  
[lmastrandrea@upa.chob.edu](mailto:lmastrandrea@upa.chob.edu)



Program Administrator:

Jordan Koper, MA  
[jkoper@upa.chob.edu](mailto:jkoper@upa.chob.edu)  
 716-323-0027



# Duke Pediatric Endocrinology Fellowship



## Program Highlights

- TEACHING! Faculty are enthusiastic teachers
- Exposure to common & rare endo dxs
- Supportive program leadership
- World-class research institution, with many opportunities for fellows
- New inpatient & outpatient facilities
- Great place to live – close to beaches, mountains
- Colleagues treated like family



**DukeHealth**

## Who we are

- 7 Faculty
- 3 Fellows (1 per year)  
2023-2024 Fellows:
  - Kathryn Blew, MD
  - Alice Basin, MD
  - Natalie Hernandez, MD
- Amazing team of 2 APPs, 3 RN CDEs, 1 RD CDE, 1 SW, 2 staff assistants, 1 RN triage



## Expertise in

- Lipid Disorders
- Diabetes
- Gender Care
- Thyroid cancer & nodules
- Differences of sexual development
- Obesity, including monogenic & syndromic
- Hyperinsulinism
- Bone Disorders



**Program Director:** Laura Page, MD, [Laura.page@duke.edu](mailto:Laura.page@duke.edu)

**Program Coordinator:** Elizabeth Sasser, [Elizabeth.sasser@duke.edu](mailto:Elizabeth.sasser@duke.edu)

## Pediatric Endocrinology Fellowship Program

**LSU Health**  
NEW ORLEANS  
**School of Medicine**  
Department of Pediatrics

  
**Children's Hospital**  
New Orleans  
LCMC Health

4 faculty members, PD Dr. Ricardo Gomez.

Inpatient and outpatient experience in a very friendly and diverse educational environment.

Exposure to all aspects of clinical endocrinology, didactic sessions and opportunities for research.

### Primary training site **Children's Hospital New Orleans**

- Recently renovated, 257-bed, pediatric medical center, largest hospital dedicated to pediatrics in the state of Louisiana and the Gulf South, over 40 pediatric specialties and more than 400 physicians
- New Orleans is one of the world's most unique and diverse cities with a rich history and culture

Information :

[Pediatric Endocrinology Fellowship \(lsuhsc.edu\)](http://lsuhsc.edu)





# CT Children's/UCONN Pediatric Endocrinology Fellowship Program



Official pediatric teaching hospital of

**UCONN**  
SCHOOL OF MEDICINE

## Who We Are

- ❖ **Large, Dynamic Division**
  - 13 Faculty *and growing!*
  - 3 APPs share inpt service
  - 2 SW; 6 CDEs; 4 Endo RNs
- ❖ Passionate teaching faculty with broad subspecialty expertise



## Program Strengths

- ❖ 1 fellow/year = program tailored to your career goals
- ❖ 50% of clinical time is protected outpatient
- ❖ Your own continuity clinic in Endo/DM
- ❖ Choice of clinical, translational, or basic science research with potential concurrent Masters in research/PH



## Location, Location, Location!

- ❖ Only free-standing Children's Hospital in CT
- ❖ We are GROWING! \$280 million hospital expansion

## CT has it all!

- ❖ Culturally diverse
- ❖ Plenty of outdoor spaces
- ❖ Lower cost of living than NYC/Boston
- ❖ Highly ranked for resident QOL

## Fellows Can Expect

- ❖ Guaranteed salary support for all 3 yrs
- ❖ Generous benefits and educ. stipend
- ❖ All fellows go to PES annually + other CME
- ❖ Priority on wellness
  - ❖ Quarterly self-care time & interview days not taken from PTO
- ❖ Close, supportive relationship w/faculty



**Follow us on  
Instagram!**



<https://health.uconn.edu/graduate-medical-education/pediatric-endocrinology-fellowship/>



**PD:** Briana Patterson, MD, MSCR

[bcpatte@emory.edu](mailto:bcpatte@emory.edu)

**APD:** Shruthi Arora, MD

[shruthi.arora@emory.edu](mailto:shruthi.arora@emory.edu)

### Opportunities for Fellows:

- Clinical research
- Quality improvement
- MSCR Program
- GME-wide Special Programs in Advocacy, QI, Global Health, Med Ed and more
- Attend Diabetes Camp
- Progressive policy for maternity/paternity leave
- Local and national committee engagement

### Program specifics

- Recruiting (2) 1<sup>st</sup> year fellows through ERAS
- Fully funded all 3 years
- 10 faculty MDs
- Robust CDE staff
- Special Programs/Interests:
  - T2DM
  - DM technology
  - Thyroid neoplasia
  - Cancer survivorship
  - CF Endo care
  - Turner Syndrome
  - Lipid disorders
  - DSD Clinic
  - Bone disorders
  - .....and more



EMORY  
UNIVERSITY

### Program Culture

Clinically oriented  
Tight-knit fellows & faculty  
Ample attendings/APPs- not fellow dependent

### Institution Culture

Patient safety/QI  
People First, Children Always  
State of the Art New Hospital **2024**

### Location Location Location!

Diverse population  
Great food  
Great weather  
MLB, MLS, WNBA, NFL, NBA  
Arts & Theatre  
A few hours to beach & mountains  
4 seasons/mild winters  
Airport to Everywhere

# Pediatric Endocrine Fellowship

- Specialty clinic experience: Turner syndrome, High risk diabetes, bone, lipid, gender care, CF endocrine and diabetes, newborn screening, obesity, type 2 diabetes.
- Graduated autonomy with flexible scheduling. Fellows plan the yearly schedule. Weekends off when on inpatient.
- 6 total fellow positions
- Fellow driven research. You pick your project.
- UAB has a wonderful spirit of collaboration especially with research and clinical care. It is not hard to find wonderful mentors.
- UAB is the top university in the country for diversity 2021.
- 13 faculty in 2023, grew by 1 this year! 2 are Med-Peds trained.
- Faculty are approachable and eager to mentor fellows
- Birmingham will surprise you as a wonderful place to live. Come visit!
- Well developed didactic program with excellent board pass rate (99.9%)
- Research months: 3 first year, 8 second year, and 10 third year with protected time.
- Tertiary care center with excellent exposure to rare disorders
- Excellent support staff.
- We use EPIC as our Medical Record
- Active in local JDRF and camping organizations
- Participating site in T1D exchange and Pediatric Diabetes Consortium
- Active involvement with Med-Peds transition clinic at UAB.
- Third largest hospital in the US for children.
- PD: Mary Lauren Scott, MD-  
[mlscott@uabmc.edu](mailto:mlscott@uabmc.edu)
- APD: Giovanna Beauchamp, MD  
[gbeauchamp@uabmc.edu](mailto:gbeauchamp@uabmc.edu)
- Coordinator: Toni Davison  
[tdavison@uabmc.edu](mailto:tdavison@uabmc.edu)







# Harbor-UCLA Pediatric Endocrinology Fellowship

## Our Faculty

- Jennifer K. Yee, MD
  - Program Director
  - UCLA Clinical Professor
- Catherine Mao, MD
  - UCLA Clinical Professor
- Lynda Polgreen, MD, MS
  - UCLA Associate Professor In-Residence



Dr. Yee



Dr. Mao

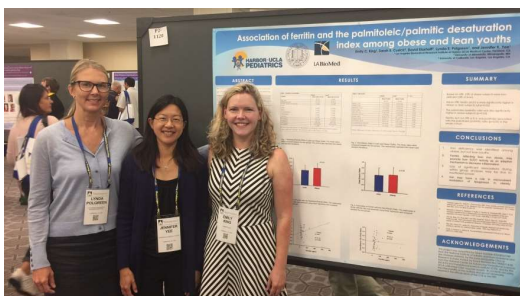


Dr. Polgreen

We collaborate with our adult endocrine program in fellow education

## Our Program

- Harbor-UCLA Medical Center – primary clinical site
- Rotation at Miller Children's Hospital, Long Beach
- Individualized training for clinical or academic careers
- Wide variety of cases including complex and rare disease
  - Multidisciplinary care
  - Interdisciplinary case conferences with surgery and radiology



## Program Culture

- Smaller program in a collegial department
- Mission to serve the underserved
- Collaborative working environment



## Institution Culture

- Highly values trainee education
- Committed to diversity, equity, and inclusion
- Excellent benefits for fellows

## Geographic area/Culture

- South Los Angeles is rich with cultural diversity
- Proximity to the beach, mountains, winter snow, and downtown Los Angeles!



# Johns Hopkins Pediatric Endocrinology Fellowship

- **Program Highlights**
- Extensive clinical training in inpatient and outpatient endocrinology
- Opportunities for clinical and basic science research with mentors within the division or throughout the School of Medicine
- Opportunity to complete a Masters in Clinical Investigation at the Johns Hopkins School of Public Health
- Diabetes Camp

## **Johns Hopkins Pediatric Endocrinology:**

[hopkinschildrens.org/fellowships/endocrinology](http://hopkinschildrens.org/fellowships/endocrinology)

## **Johns Hopkins Children's Center Tour:**

<https://www.youtube.com/watch?v=PIRK1XY60P4&feature=youtu.be>

## **Johns Hopkins Fellowships, An Inside Perspective:**

<https://m.youtube.com/watch?v=8qrQn3StEgw>

## **Visit Baltimore:**

<https://www.youtube.com/watch?v=ay9hL2MPY5w>



- Recruiting for 2 fellows per year
- 5 current fellows
- 13 faculty members
- Program Director:  
David W. Cooke, M.D.  
[dcooke@jhmi.edu](mailto:dcooke@jhmi.edu)
- Program Coordinator:  
Kay Thilert  
[kay.t@jhmi.edu](mailto:kay.t@jhmi.edu)

# Pediatric Endocrinology Fellowship



## Program Director

- Reema Habiby, M.D.

## Program Coordinator

- Brooke Baker

## Department Staff

- 18 Faculty, 1 APN, 13 CDEs, and 8 RNs

## Current Fellows

- Apoorva Aekka, MD
- Abigayil Dieguez, MD
- Claire Moore, MD

## Program Highlights

- 2 fellows per year
- 1<sup>st</sup> year primarily clinical
- 2<sup>nd</sup> and 3<sup>rd</sup> year primarily research with some clinical work
- Multidisciplinary clinics: Gender and Sex Development, Turner syndrome, Thyroid Cancer, Oncology and Neuro-oncology survivorship, Bone Health, PCOS
- Robust didactics, journal club, board review

## Endocrinology Division

- 18,000 outpatient visits per year
- Only pediatric diabetes program in Illinois certified by ADA
- 2,000 patients with Diabetes

## Program Culture

- Collaborative, supportive, and fun!
- Prioritize fellow wellness and education
- Family feel

## Lurie Children's Hospital

- Affiliated with Northwestern University Feinberg School of Medicine-collaboration with academic and clinical partners, Stanley Manne Research Institute
- 23 story, 360 bed state of the art hospital
- Top-ranked children's hospital in Illinois
- Committed to providing health care to children regardless of the ability to pay
- Commitment to diversity, equity, inclusion and belonging



## City of Chicago

Hospital is situated near Lake Michigan. Premiere shopping, Cultural, and dining district, World-class arts scene and outstanding access to outdoor recreation.



Contact for more info @ [rhabiby@luriechildrens.org](mailto:rhabiby@luriechildrens.org)



# Pediatric Endocrinology Fellowship

## Mayo Clinic College of Medicine and Science

### Rochester, MN



Seema Kumar, MD  
Program Director

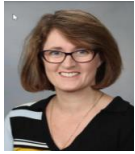


Sarah Reed  
Program Coordinator

#### Our Faculty



Aida Lteif, MD



Siobhan Pittock, MBBCh



Peter Tebben, MD



Alaa Al Nofal, MD



Ana Creo, MD

#### Program specifics

- Personalized clinical training working one-on-one with individual faculty members
- Opportunities for individuals interested in endocrine research as well as clinical pediatric endocrinology
- A mix of patients spanning the spectrum of pediatric endocrine disease
- Fully funded three-year program

#### Current Fellows



Sarah Jackson, D.O.



Mostafa Salama, M.B., B.Ch.



Kaitlin Leopold, MD

#### Program culture

- Friendly, welcoming and eager to teach, caring and approachable faculty
- Collaborative environment
- Diversity in fellows and faculty
- Excellent research opportunities



#### Mayo culture

- Excellence in all three fields (practice, education and research)
- Place for hope, healing, energy and transformation

#### Geographic area/Culture

- We love all four seasons (yes, even winter) ☺
- Convenience of a mid sized town that is only 75 minutes drive to the Twin Cities





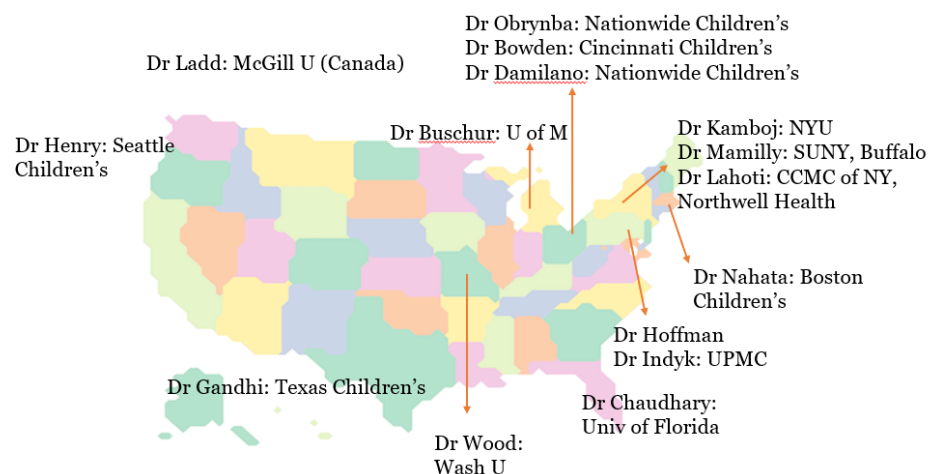
2 Fellowship positions/year

Intramural grant program, robust Research Institute

Dedicated ½ Day protected academic time throughout training

Master's funding Program (Public Health, Biomed. Education)

## 15 Faculty with Diversity in Training Varied Clinical and Research Expertise



*Alumni speak ~ "I had excellent mentors who guided me through obtaining grant funding, writing manuscripts, and provided me with several different scholarly projects."*

## AMONG THE TOP 10 CHILDREN'S HOSPITAL- US NEWS AND WORLD REPORT

Vibrant growing metropolitan area with a perfect mix of  
Midwestern charm and East coast sensibility.

4 seasons, Affordable cost of living, Great food, college sports,  
outdoor activities, family activities.



## 12 sub-specialty programs/clinics

Turner  
syndrome

Neuro-Onc  
survivorship

Thyroid Nodule  
and cancer

CFRD

Type 2 DM

Fertility and  
Reproductive  
health program

Prader Willi  
Syndrome

TPIAT

THRIVE-  
Gender and  
DSD clinic

Metabolic Bone  
health

Long term BMT  
follow up

PCOS



# Oregon Health & Science University Pediatric Endocrinology

## Our People

- Lisa Madison – Program Director
- Bruce Boston – Division Chief
- 9 faculty
- 1-2 fellows/year
- 5 diabetes educators
- Dedicated RN/MA support
- Integrated psychology and social work

## Our Program

- Clinical – busy inpatient service, 7 multidisciplinary subspecialty clinics, endocrine and diabetes continuity clinics
- Scholarly work - basic science, clinical research, educational research and QI options to fit all career goals
- MPH, Masters of Clinical Research and Educational Scholars programs available

Our mission - develop outstanding pediatric endocrinologists equipped to build fulfilling careers as clinicians, educators, researchers, and advocates.

Our commitment to you - provide training in a diverse, inclusive, collegial environment where trainee wellbeing and professional development are our utmost priorities.

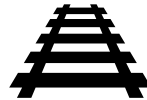
Our home – Portland, Oregon is situated between the Cascade mountains and the Pacific ocean with world-class cultural offerings and a thriving outdoor culture both at our doorstep.



## Pediatric Endocrinology fellowship at Children's Hospital of Richmond, Virginia Commonwealth University, Richmond, VA



A busy urban tertiary academic pediatric center located in central Virginia with about 8000 visits/yr.



Tracks offered: clinician scientist, public health, clinician educator with option to pursue certificate/degree, dual training in Medicine-Pediatrics



A highly individualized learner-centered curriculum that provides graduated autonomy to fellows in clinical practice, education and research.



Support for scholarly activity by NIH-funded center for clinical and translational research for hypothesis generation, biostatistics, grant funding specifically for trainees for project support and individualized further by scholarship oversight committee to attain research goals.



Interdisciplinary programs led by endocrine faculty for gender management, cystic fibrosis, bariatric management, diabetes, thyroid cancer, differences in sex development, bone disorders. Supported by dietitians, nurse navigator, psychology, and social work.



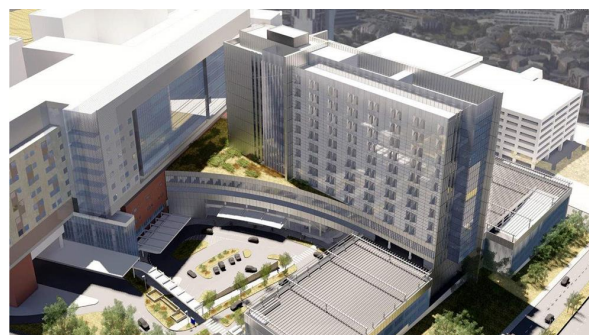
Trainees participate in and lead didactics via core endocrine conference, journal clubs, weekly case conference, quality improvement, mortality and morbidity interdisciplinary conference, and community building with peers via monthly pediatric core conference for fellows.

**Contact: Anshu Gupta, MD, MS, Program Director, Pediatric Endocrinology, Email: [Anshu.Gupta@vcuhealth.org](mailto:Anshu.Gupta@vcuhealth.org)**



## Pediatric Endocrine Fellowship

8 Faculty, 2 NPs & 2 Fellows  
8 RNs and 4 CDEs  
Family feel, Supportive Culture



**NEW Summer 2023 UTHealth/UHS  
Women and Childrens Hospital**

### San Antonio:

- Is the nation's 7th largest city with 300 years of rich history, beauty and culture
- Low Cost of Living
- Great Food & Weather
- Wonderful Regional Hill Country, Austin and Riverwalk Fun Activities



### Program Highlights:

Fellowship Established in 2005

- 1st year primarily clinical
- 2nd and 3rd year primarily research with some clinical work
- Texas Diabetes Institute Clinics
- Pediatric Bionic Pancreas research, Type 2DM Clinical Trials, Thyroid, CFRD & Oncology Centers of Excellence
- Reproductive Endocrine & Adult Endo Fellowship Collaboration
- Robust didactics, Journal Club, Endocrine Grand Rounds
- Humanities and School of Public Health
- Clinical Scholars Track
- Ranks 25th nationally for diversity
- <https://lsom.uthscsa.edu/pediatrics/divisions/endocrinology/>



# PEDIATRIC ENDOCRINE FELLOWSHIP

Website: [Endocrinology Fellowship](#) | [Department of Pediatrics](#) | [University of Pittsburgh](#)



**Program Director: Kanthi Bangalore Krishna**  
[bangalorekrishnak2@upmc.edu](mailto:bangalorekrishnak2@upmc.edu)

**Program Coordinator: Kathy Opel**  
[Kathy.opel@chp.edu](mailto:Kathy.opel@chp.edu)

**Department Staff:**  
28 Faculty, 11 APPs, 12 CDCES, 6 RDs and 9 RNs

**Endocrinology Division**  
• ~25,000 outpatient visits per year  
• ~2,500 patients within the Diabetes Program

**Culture**  
• Friendly, warm, supportive and diverse  
• Emphasis on fellow wellness and safety  
• Ability to individualize tracks based on fellow-interest

## Program Highlights

- 3 fellows per year
- First year is primarily clinical with a 4-week research elective
- Second and third years are primarily research with some clinical responsibilities
- Multidisciplinary clinics: Gender health and DSD, Adrenal, CFRD, Thyroid Cancer, Childhood cancer survivorship, Bone health, PCOS, PWS, lipid & more
- Robust didactics including game-based learning, journal clubs, board review
- Robust mentored QI projects
- Diabetes Camp participation





# UH Rainbow Babies and Children's Pediatric Endocrinology Fellowship



## Mission Statement

To train **skilled clinicians**, **effective educators**, and **collaborative researchers** in pediatric endocrinology who practice **high quality, evidence-based** care; who identify opportunities and **implement change** to improve care; who understand the impact of **social determinants of health**; and who engage in **research and advocacy** to become **leaders** in our field.

## Our Division: RBC Peds Endocrine

- Mentored support of trainees
- Leadership in many NIH & industry funded studies: T1/T2DM, diabetes tech
- Outstanding research infrastructure
- Exceptional, committed multidisciplinary team: 10 faculty, 7 CDCES RNs, 2 endo RNs, 1 RD, 2 SW, 2 MAs, 1 psychologist
- *Ranked #15 in US News 2022*
- Multiple subspecialty clinics: Lipid, Gender Care, Cancer Survivor, CFRD, Prader Willi
- Supportive, fun, loyal, happy group—work hard and play hard!

## Program Highlights

- 1<sup>st</sup>-2<sup>nd</sup> yr: robust clinical inpatient/outpatient training, establish research/QI, DM camp
- 2<sup>nd</sup>-3<sup>rd</sup> yr: research focus finishing with “pre-attending” clinical experience
- Weekly fellow-focused didactics and division conferences
- Immersive training at oldest T1D camp in US
- Research supported by division & department funding
- Current fellow funded by PES Rising Star Award (Amjad Ali)
- Fellows present research and cases at PES, ADA, ISPAD, ENDO meetings
- RBC offers Medical Education, Global Health and Quality Improvement Tracks
- Annual division book club focused on social determinates of health



## Our Hospital: UH Rainbow:

- 244-bed, quaternary care, highly-ranked
- Affiliation with Case Western Reserve and University Hospitals→robust collaboration
- Culture of patient safety, continuous improvement, wellness, inclusivity, diversity

## Our City: CleveLAND that We Love

- Friendly, AFFORDABLE Midwest vibe
- World-renowned art museum, theater
- Cleveland MetroParks--“Best In Nation”
- 4-seasons, Great Lakes, central location, great food scene, professional sports—CLE has it all!



**Program Director:** Beth Kaminski, MD

Beth.Kaminski@uhhospitals.org

[Visit our RBC Peds Endo Fellowship Website](#)

# Seattle Children's Hospital, University of Washington

## Pediatric Endocrinology Fellowship

### *Clinical Program*

- 20 pediatric endocrinology faculty
- 12 multidisciplinary clinics
- 407 bed hospital
- Primary pediatric referral center for children throughout Washington, Wyoming, Alaska, Montana and Idaho

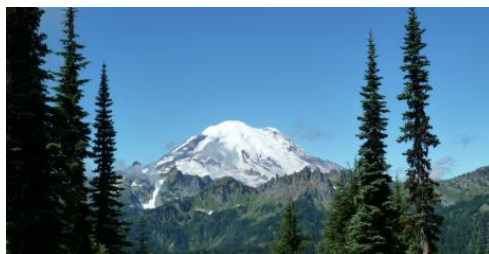
### *Education*

- 2 weekly education conferences (+ many other opportunities)
- Fellows college curriculum with all SCH fellows
- Large residency and medical school with teaching opportunities



### *Research*

- Many opportunities in diabetes, obesity, pituitary, gender care
- Recent fellows projects:
  - Comparative efficacy of puberty blockers in gender diverse youth
  - Disparities in AKI in children and adolescents with DKA
  - Effect of probiotic on microbiome in adolescents
  - Feasibility and acceptability of CGM in youth with T2DM
  - Rates of Disordered eating in youth with T1 and T2DM in the SEARCH for Diabetes Cohort



Program Director: Sara DiVall, MD  
Associate Program Director: Juanita Hodax, MD  
Program Coordinator: Lauren Hart

[peds.uw.edu/fellowships/endocrinology-fellowship](https://peds.uw.edu/fellowships/endocrinology-fellowship)





More information about our program:  
<https://pediatrics.ucsf.edu/program-description>



### **The Pediatric Endocrinology Fellowship at UC San Francisco**

- Dedicated to training the next generation of leaders in pediatric endocrinology
- Rotate at two tertiary care Children's Hospitals
- Live in the diverse and vibrant Bay Area with outstanding cultural and outdoor activities
- Structured didactics and mentorship
- 80% protected time in the second and third year to pursue research, advocacy, quality improvement, or formal training in informatics or clinical research

### **Program Leadership\***

- Fellowship Program Director: Srinath Sanda, MD
- Associate Program Directors: Shylaja Srinivasan, MD, Jenise Wong, MD, PhD, Tariq Ahmad, MD
- Fellowship Program Coordinator: Twinkle Patel

\*Email: [Firstname.Lastname@ucsf.edu](mailto:Firstname.Lastname@ucsf.edu)



# University of North Carolina Pediatric Endocrinology Fellowship



## *Dedicated People*

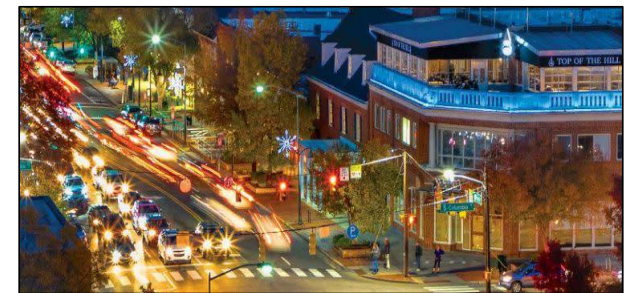
- Program Director
  - Amy Levenson, MD
- Clinical & Research Faculty
  - 8 core attendings
- Fellows
  - 1 per year
- Staff
  - Nurses, nutritionists, educators, clinical pharmacist, social workers, support staff

## *Comprehensive Program*

- In depth clinical training
  - Regional referral center
  - Subspecialty programs
    - Gender health
    - Turner syndrome
    - Thyroid nodules
    - Bone metabolism
    - Lipid disorders
    - Reproductive endocrinology
- Innovative Curriculum
- Diverse Research Opportunities

## *Vibrant Environment*

- Academic world-class institution
- Access to three metropolitan areas
- Vibrant and diverse central location
- City life, countryside, beaches, and mountains



# Children's Hospital Colorado/Barbara Davis Center for Diabetes Pediatric Endocrinology Fellowship Program

## Key Contacts

- **Program Director:** Jennifer Barker, M.D.
  - [Jennifer.Barker@childrenscolorado.org](mailto:Jennifer.Barker@childrenscolorado.org)
- **BDC Fellowship Advisor for Diabetes:** Taylor Triolo, M.D.
  - [Taylor.Triolo@CUAnschutz.edu](mailto:Taylor.Triolo@CUAnschutz.edu)
- **Program Coordinator:** Carolina Jensen
  - [Carolina.Jensen@childrenscolorado.org](mailto:Carolina.Jensen@childrenscolorado.org)



## • Current Fellows:

- Victoria Elliott, M.D.
- Erin Finn, M.D.
- Meghan Pauley, D.O.
- Rachel Sewell, M.D.
- Lauren Waterman, M.D.
- Ideen Tabatabai, M.D.
- Elizabeth Vargas, D.O.

## Program specifics

### • Clinical sites:



Children's Hospital Colorado (CHCO)



Barbara Davis Center for Diabetes (BDC)

## Institutional Culture

- Large quaternary care center serving children and their families from Colorado and 5-state catchment area
- BDC is committed to providing state-of-the-art care for children with T1D
- Multiple professional schools



University of Colorado Anschutz Medical Campus

## Program Culture

- Collaborative and fun with life-long learners
- Focused on teaching fellows and providing care of children with common and rare endocrine disorders
- Committed to diversity, equity, and inclusion

## Fellowship Structure

- 1<sup>st</sup> year **primarily clinical** with protected research time
- 2<sup>nd</sup> and 3<sup>rd</sup> year **primarily research** with continued clinical work
- Expanding fellowship from 6 to **9 total fellows** over the next 3 years

## Geographic Area/Culture

- Denver & Aurora: Restaurants, concerts, shows, sports teams
- Colorado: Hiking, biking, camping, climbing, rafting, snowshoeing, exploring





# University of Iowa Stead Family Children's Hospital Pediatric Endocrinology Fellowship



## • The People

- 10 faculty
- 3 fellows (1/year)
- 2 NPs
- 5 CDEs
- Dedicated Dietician
- Social worker
- Clinical psychologist
- 2 endocrine nurses
- Clinical research team



## • The Program

- Inpatient and consult service
- Diabetes Clinics at forefront of technology in insulin delivery and glucose monitoring
- New 12 story Children's hospital opened 2017
- Sub-specialty Clinics
  - Thyroid
  - Brain Tumor
  - Cystic fibrosis
  - Cardiometabolic
  - Bone health
  - PCOS
  - Lipid



Medical education- medical and PA students, residents

Option to earn Masters Degree

Diabetes camp!

Basic and Clinical research opportunities

Fellow-driven but not "fellow-dependent" = flexibility

## • Iowa City

- Safe, affordable, easy living
- Nationally-renowned public school system
- Home to Big 10 University
- Great food, breweries, theater
- Outdoor recreation- Cycling, hiking, Iowa River
- Within 4-5 hours of Chicago, St. Louis, Omaha, Minneapolis, Kansas City, Milwaukee

	Inpatient	Outpatient	Research	Weekends	Continuity Clinic
Year 1	4 months (16 weeks)	2 months (8 weeks)	6 months	10	1 half day per week
Year 2	3 months (12 weeks)	1 months (4 weeks)	8 months	10	1 half day per week
Year 3	3 months (12 weeks)	1 month (4 weeks)	8 months	12	1 half day per week





# UVA Children's Hospital



## Faculty and Staff

- David Repaske, MD, PhD, Professor and Division Chief, Fellowship Director
- Alan Rogol, MD, PhD, Emeritus Professor
- Mark DeBoer, MD, Professor
- Christine Burt Solorzano, MD, Professor
- Laura Shaffer, PhD, Professor
- Kelly Mason, MD, Associate Professor, Associate Fellowship Director
- Melissa Schoelwer, MD, Associate Professor
- Saima Hanif, MD, Assistant Professor
- Santhi Logel, MD, Assistant Professor
- Stephanie Keeling, FNP, Nurse Practitioner
- Deb Gleason, PhD, CPNP, Nurse Practitioner
- Buffy Cech, RN, Care Coordinator
- Libby Steel-Purdue, RN, Care Coordinator
- Joy Kauffman, RN, Care Coordinator
- Peggy Scoggin, RN, CDCES, Care Coordinator
- Elyse Marriner, RN, CDCES, Care Coordinator
- Melissa Davey, RN, Care Coordinator
- Melanie Miller, RN, Care Coordinator
- Cory Kohler, RD Nutritionist
- Alexa West, RD Nutritionist
- Kaitlyn Harlow, MSW, Social Worker
- Edelmaris Colindres, MSW, Social Worker
- Jordan McCoy, RN, Clinical Research Coordinator

## Program Specifics

- 3 year program. Flexible to meet fellow's goals. Typically:
  - 1<sup>st</sup> year: 8 months clinical; 4 month research
  - 2<sup>nd</sup> year: 2 months clinical; 10 months research
  - 3<sup>rd</sup> year: 2 months clinical; 10 months research
  - One week on first call each month
- Close relationship with Adult Endo: collaborate in clinics, conferences, research
- Close relationship with UVA Center for Diabetes Technology
- Research strengths: Diabetes Technology, PCOS and Hyperandrogenism, Endocrine Clinical Trials, Diabetes Prediction and Prevention
- Clinical strengths: Diabetes, Oncology Endo, Metabolic Bone, CFRD, Neuromuscular Endo, DSD, Transgender Health
- Conferences: Med/Ped Endo Grand Rounds, Med/Ped Case Conference, Med/Ped Fellow Didactic, Ped Endo Conference, DSD Conference, Gender Health Committee, Pituitary Conference, Thyroid Cancer Conference, Peds Fellow Forum, Ped Endo Fellow Didactic



## Ped Endo Program Culture

- UVA Ped Endo Fellowship active since 1974
- US News ranked for the past 7 years
- Recent fellows have all passed boards on first attempt
- Approved for 3 fellows
- Moderate volume/High complexity: There is time to think and learn!
- Very supportive of fellows in research and clinical activity. History of fellow publications in highly ranked journals.

## Pediatrics Program Culture

- Education-focused. 100% of residents passed boards on first attempt for the past 5 years.
- Multidisciplinary morning report: reviews all interesting admissions: Gen Peds and every Subspecialty present for input; 4 days per week
- Inclusive. Very active Diversity, Equity & Inclusion Council

## Locale

- Small university town with lots going on: food, vineyards, music, history
- 30 minutes to Shenandoah National Park
- 2 hours to beach
- 2 hours to Washington, DC: drive or train

# University of Wisconsin Pediatric Endocrinology and Diabetes Fellowship



**Department of Pediatrics**  
UNIVERSITY OF WISCONSIN  
SCHOOL OF MEDICINE AND PUBLIC HEALTH



## About the Program

The UW Pediatric Endocrinology and Diabetes Fellowship program provides comprehensive clinical training, a broad spectrum of research opportunities, and exceptional mentoring and education by dedicated, approachable, and knowledgeable faculty. Clinical experiences include innovative Transgender, Bone Disorder, and Metabolic Syndrome clinics and state-of-the-art diabetes care technology. The NIH-T32-supported program is distinguished by the wide array of research topic choices, genuine opportunities for fellow initiated projects, and close mentorship.



**David Allen, MD**

*Fellowship Program  
Director*

## Institutional Culture

Our GME programs are consistently recognized for their ongoing strength and innovation, and we understand the power and value of diversity. We've developed programs and protocols within our GME programs to ensure we are moving forward and building inclusive work and health care environments.

## Geographic Culture

Consistently voted one of the best places to live in the USA, Madison is a vibrant, picturesque city with a population just over 250,000, the state capital and home of the University of Wisconsin. Boasting many big city amenities, Madison is also an easy city in which to live. Commutes are short, the cost of living reasonable, and it's an unbeatable place to work, have fun, and raise a family.



Follow to learn more!  
@WiscPedsRes



# University of Florida Pediatric Endocrinology Fellowship



## What's Unique About Our Program?

- Internationally-recognized Type 1 Diabetes Research Program
- Florida Diabetes Camp
- Nation's Largest Program for Prader-Willi Syndrome
- Youth Gender Clinic & Healthy Kids Medical-Legal Partnership
- Innovative Metabolic & Obesity Program with Fitness Mini-Clinic



Diabetes Clinic  
Medical  
Assistants



Clinical Trial  
Experiences



Advocacy  
Opportunities



Pediatric  
Diabetes  
Psychologists

<https://endo.pediatrics.med.ufl.edu/>  
Laura Jacobsen, [lauraj@ufl.edu](mailto:lauraj@ufl.edu)

## We are dedicated to:



High-quality, compassionate,  
and state-of-the-art care



Training students, residents, and  
the next generation of ped endos



Impactful clinical, translational,  
and basic science research

## We love living here:



Located in North Central Florida  
between Atlantic coast and Gulf of  
Mexico



Home to theatrical venues,  
museums, athletics, outdoor  
activities, and eclectic food!



# University of Minnesota Pediatric Endocrinology Fellowship



Muna Sunni, MBBCh,  
MS  
[sunni001@umn.edu](mailto:sunni001@umn.edu)  
Program Director



Michelle Stepka, MEd.  
[mstepka@umn.edu](mailto:mstepka@umn.edu)  
Fellowship Program  
Coordinator

<https://med.umn.edu/pediatrics/education/fellowships/medical-fellowships/pediatric-endocrinology>

## Current Fellows:



Dr. Sandy Liu

Dr. Tasneem  
Abdel-Karim

Dr. Laura Golob

## ACGME Accredited (3-Year Training Program)

- **Clinical Training:** Outpatient: ½ day clinic/week; Inpatient Call (1st yr: 12 weeks, 2nd yr: 14 weeks, 3rd yr: 16 weeks; Clinic Rotation (4 weeks each year): in various clinics such as - Turner Clinic, Brain Tumor Clinic, Metabolism Clinic, Lipid Disorders, Bone Metabolism, Weight Management Clinic, Type 1 & 2 Diabetes Clinic, Gender Clinic, Weight Management Clinic, General Endocrine Clinic
- Diabetes Camp - one week each summer which includes supervising the insulin dosing of campers both in camp and on trail with a pediatric endocrinologist
- **Education:** Weekly division conferences, monthly topic-focused didactics, quarterly core curriculum
- Educational resources such as textbooks and online education resources
- **Research** opportunities
- Master's program (Clinic Research- MS) opportunity
- Scholarly and educational funds



MASONIC CHILDREN'S HOSPITAL



A collaboration among the University of Minnesota,  
University of Minnesota Physicians and Fairview Health Services



Our Pediatric Fellowship fosters a training environment which leverages our broad clinical base and the long history of scientific achievement at our institution to create the best training experience we can for tomorrow's pediatric endocrinologists. We welcome you to explore our program in more depth through a personal phone call or visit with any of our program leadership or current fellows.

### Program Culture

The Endocrine Division has 17 physicians, 6 fellows, 5 nurse practitioners, along with more than 20 endocrine nurses, diabetes educators, dietitians and social workers. We have 19,000 ambulatory patient encounters yearly including caring for over 2000 children with diabetes. In addition to delivering excellent patient care, we are proud of our efforts to improve care through our NIH-supported clinical research program.

### Institution Culture

UT Southwestern is an academic medical center, world renowned for its research, regarded among the best in the country for medical education and for clinical and scientific training, and nationally recognized for the quality of clinical care. The Medical Center has four degree-granting institutions: UT Southwestern Medical School, UT Southwestern Graduate School of Biomedical Sciences, UT Southwestern School of Health Professions, and UT Southwestern School of Public Health.

- The schools train nearly 3,700 medical, graduate, and health profession students, residents, and postdoctoral fellows each year.
- Ongoing support from federal agencies, such as the National Institutes of Health, along with foundations, individuals, and corporations, provides almost \$554.4 million per year to fund faculty research.
- Faculty and residents provide care to more than 117,000 hospitalized patients, almost 360,000 emergency room cases, and oversee approximately 3 million outpatient visits annually.
- UT Southwestern has approximately 18,800 employees and an operating budget of \$4.1 billion.

### Geographic area/Culture

Dallas is the international hub of North Texas, due in large part to its history of welcoming people from across the globe. According to the city of Dallas' Office of Economic Development, 25% of Dallas residents were born outside the U.S., and 44% consider English their second language. A 2021 WalletHub study ranked Dallas as fourth in diversity among U.S. cities. – ahead of Los Angeles and Chicago.

# Yale Pediatric Endocrinology Fellowship Program

A diverse and dedicated faculty that spans the breadth of clinical and research expertise...



... with internationally recognized programs in:

- Diabetes (Type 1 and Type 2)
- Weight Management and Bariatric Surgery
- PCOS
- Metabolic Bone Disease
- Gender Program
- Differences in Sexual Development
- Thyroid Center
- Down Syndrome

## The Program :

- Six fellows (two per year) fully funded for all 3 years
- Inpatient coverage at Yale New Haven Children's Hospital is supported by full-time diabetes advanced practice nurse
- Exposure to a range of subspecialty clinics in multiple locations with diverse patient population
- Fellows' continuity clinics in endocrinology and diabetes
- Multiple weekly didactic conferences including board review & journal club
- Close collaboration with adult endocrine services
- Opportunity for combined advanced degrees including PhD, MPH and MEd-MHS

<https://medicine.yale.edu/pediatrics/education/fellowships/fellowships-section/endo/>

## New Haven:

- A vibrant college town with the cultural opportunities of a large city (theater, restaurants) with the intimacy of a small town
- Easy access to outdoor activities and the beautiful CT shore

