



Kelly Rouster-Stevens, MD, MS
Program Director
krouste@emory.edu



EMORY
UNIVERSITY



Pediatric Rheumatology Fellowship

Develop collaborative clinical care expertise:

- To lead the comprehensive care of children with rheumatic diseases.
- To incorporate the role of medical and allied healthcare professionals in patient care.
- To understand the role of community resources in the care of children with rheumatic diseases.

Foster independent translational and clinical investigation:

- To provide mentoring to develop and complete innovative and feasible research projects.
- To ensure academic achievement by rigorously supervising academic progress.

Invest in the future of pediatric rheumatology:

- To promote management skills for independent direction of a rheumatology team, including formal participation in divisional quality and patient safety initiatives.
- To solidify research skills to further independent research careers.
- To foster mentoring skills to educate subsequent trainees.
- To cultivate leadership skills to advance the field of pediatric rheumatology.
- To promote participation in the American College of Rheumatology, Childhood Arthritis & Rheumatology Research Alliance and the American Academy of Pediatrics.



UCSF Benioff Children's Hospital Pediatric Rheumatology Fellowship Program



Our Faculty

Emily von Scheven MD MAS
Mike Waterfield MD PhD
Erica Lawson MD
William Bernal MD
Geraldina Lionetti MD
Nikki Ling MD MAS
Susan Kim MD
Alice Chan MD PhD
Jessica Neely, MD
Danny Soulsby, MD
Lenny Dragone MD PhD
Raphael Hirsch MD



Our Fellows

Roberto Valdovinos, MD
Taylor LaFlam, MD PhD
Rebecca Olveda, MD

Our Goal

To train excellent, compassionate clinicians prepared to succeed in an academic environment and advance the field of pediatric rheumatology.

Clinical Training

Large, highly diverse patient population includes all major pediatric rheumatic conditions, and the opportunity to care for patients longitudinally across fellowship. Innovative, high-quality didactics prepare fellows for board exams and clinical practice.

Research & Quality Improvement

UCSF is a top-ranked research university with advanced training opportunities in basic, translational, and clinical research, as well as quality improvement methodology and educational scholarship.

Leadership & Mentorship

Our faculty includes leaders from across the field of pediatric rheumatology, who provide mentorship in patient care, career development, basic and clinical science, informatics, quality improvement, and medical education.

Join Us!

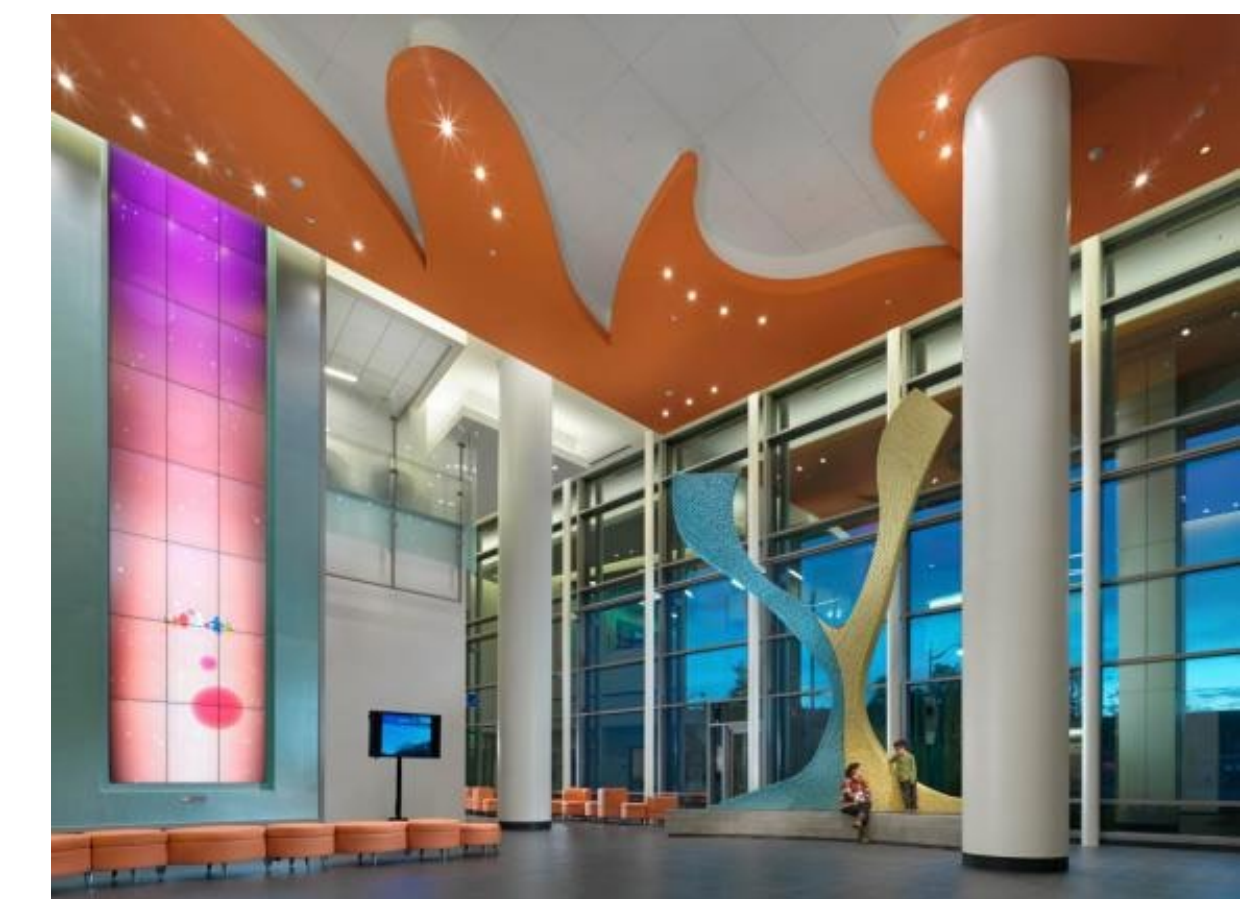
<https://pediatrics.ucsf.edu/rheumatology-education>

Program Director: Erica.Lawson@ucsf.edu

Program Coordinator: Catherine.Le@ucsf.edu

BCH Oakland & BCH San Francisco:

Two world-class teaching hospitals focused on quaternary care and underserved populations.



Why live in San Francisco?

Amazing food
Beaches, vineyards
& mountains
Ski, surf, hike, bike!

Children's Hospital at Montefiore Pediatric Rheumatology Fellowship Program

Our Team



Holiday gatherings



Ultrasound teaching



Team building events



Emphasis on wellness

Program Highlights

The Pediatric Rheumatology fellowship at Children's Hospital at Montefiore (CHAM) and Albert Einstein College of Medicine is a three-year program with the goal of training physicians to become academic leaders in pediatric rheumatology. We are fortunate to serve a racially and economically diverse community in the Bronx/Westchester, providing trainees with exposure to a wide range of rheumatologic diseases, varying medical complexities and an understanding of the psychosocial and economic impact on physical illness.

The mission of our program is to provide optimal health care to children with pediatric rheumatic disease through:

- Specialized, state-of-the-art patient care services
- Exceptional and comprehensive training to future pediatric rheumatologists
- Meaningful scientific investigations that contribute to the advancement of the field
- Quality improvement efforts to assure safe and efficient healthcare practices
- Partnering with regional and national foundations to support and advocate for patients and their families

The Pediatric Rheumatology fellowship training program at CHAM has been accredited since July 2008. Trainees have been consistently recruited from top institutions across the US, with 100% board pass rate and 100% of fellows securing their top choice in faculty placement upon graduation.

Our program provides trainees with a comprehensive experience in all aspects of pediatric rheumatology, including clinical services, medical education, quality improvement and research methodology. We strive to create an inter-disciplinary learning environment with exposure to combined clinics with nephrology and dermatology, as well as a dedicated ultrasound clinic. Educational opportunities exist for formal training in research methodology (MS, MPH).

Click here to learn more: [CHAM fellowship tour](#)

Environment



Children's Hospital at Montefiore



Close proximity to Manhattan



Bronx Zoo



Bronx Botanical Gardens





Boston Children's Hospital



HARVARD MEDICAL SCHOOL TEACHING HOSPITAL

Program people

Section chief: **Mary Beth Son**



Fellowship director: **Mindy Lo**

Large faculty:

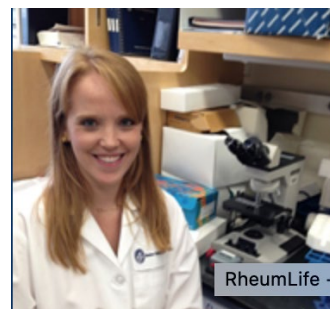
- 6 full time clinical
- 6 mostly research
- 2 med/peds
- 2 NPs
- 1 LICSW



Program specifics

- Clinical 1st year; 2nd two years are research
- Shared call and didactics with Allergy/Immunology
- High volume hospital with large international patient cohort
- Multidisciplinary clinics (lupus nephritis, rheum/derm, uveitis)
- Access to basic science, translational, and clinical research mentors across HMS

Lauren Henderson, MD, MMSc



Program Culture

- Supportive
- Collaborative
- Hard-working



Mia Chandler, 3rd year
Jeff Lo, recent grad

Institution Culture

- High emphasis on teaching
- "Fellow-run" hospital
- Actively anti-racist

Boston/MA

- Diverse, progressive
- Great schools, great sports



mindy.lo@childrens.harvard.edu

Pediatric Rheumatology Fellowship



A Top Medical Center

- Texas Medical Center is the largest in the world
- TCH is ranked #2 BEST Children's Hospital by U.S. News & World Report
- TCH has 3 hospitals (soon to have 4!) and many satellite clinics
- The Department of Pediatrics at BCM has the largest pediatric residency program in the U.S.
- Opportunities to engage in DEI and advocacy initiatives

Program Highlights

- Our goal is to create leaders in the field of pediatric rheumatology
- One of the largest pediatric rheumatology programs in North America (9 attendings, 1 advanced NP, 7 fellows, 1 clinical care coord, 2 research coords)
- Involved in national mentoring initiatives (AMIGO) and research collaborations
- TCH is a CARRA research site and a PR-COIN site for QI initiatives
- Opportunities to obtain an advanced degree (M.Ed., M.P.H.)



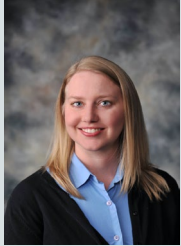
QR code to our
fellowship website



Faculty & Fellows



Tracey Wright, MD
Program Director



Katie Stewart, MD



Elizabeth Sloan, MD



Lorien Nassi, MD



Julie Fuller, MD



Hannah Bradfield, DO (PGY 5)
Maryem Al Manaa, MD (PGY 6)
Kristina Ciaglia, MD (PGY 4)

UT Southwestern Medical Center

Our Mission

Develop the next generation of Pediatric Rheumatology leaders who are committed to multidisciplinary, patient centered care, the discovery of new knowledge, and compassionate advocacy

Developing Leaders

- Embody and exhibit the UTSW values of excellence, innovation, teamwork, and compassion
- Invest in professional and leadership development so fellows leverage their talents and pursue their passions to reach their goals

Patient Centered Care

- Large, diverse patient population at 2 unique hospitals
- Multidisciplinary clinic with PT/OT, psychology, dieticians, child life and social work
- Broad spectrum of pathology

Innovative Education

- Weekly Didactics and Board Review Sessions
- Comprehensive MSK Ultrasound Curriculum
- Advanced training in clinical research and quality improvement

Discovery of New Knowledge

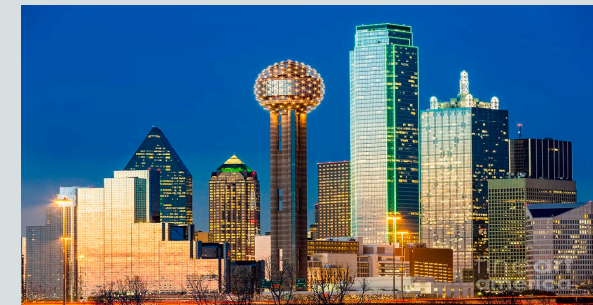
- CARRA Registry and Sub Studies
- Transition to Adult Care
- At Risk Behaviors in Adolescents with Rheumatic Disease
- Lupus Mechanisms and Outcomes
- Antiphospholipid Antibodies and Hypercoagulability



Children's Health



Scottish Rite Hospital for Children



www.visitdallas.com

FACULTY

Hemalatha Srinivasalu, M.D. - PD

Sangeeta Sule, M.D., Ph.D. - chief

Tova Ronis, M.D. - APD

Abigail Bosk, D.O.

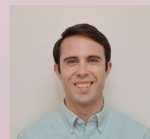
Robert Colbert, M.D., Ph.D.

Raphaella Goldbach-Mansky, M.D., M.H.S.

Michael Ombrello, M.D.

Lisa Rider, M.D.

Hanna Kim, M.D.



PROGRAM HIGHLIGHTS

Broad clinical training offered at Children's National with multidisciplinary clinics in lupus, scleroderma, reproductive health

Busy consult-based inpatient service

Research training opportunities at Children's National or NIH through CNH-NIAMS partnership

Collaborative environment with faculty, nursing, social work, research team

Structured didactic curriculum including board review, radiology review, case discussions



Arthritis Foundation Jingle Bell Run

FELLOWS

Mariana Marques, MD

Sandra Amara Ogbonnaya-Whittlesey, MD

Christopher Redmond, MD, MSc

Matthew Sherman, MD



Pre-pandemic ACR dinner



Joint injection simulation

[Click here](#) to learn more about our program!



University of Mississippi Medical Center – Pediatric Rheumatology



Program faculty and fellows:

- 3 full time and 1 part time faculty who are widely known for their academic and research endeavors
- Faculty have expertise in various areas within pediatric rheumatology such as MSK ultrasound, Dermatomyositis, lupus and post graduate medical education.
- First fellow in the program 2022-2025 is an internal UMMC candidate.



Making a decision to join pediatric rheumatology fellowship at UMMC was an easy decision, it was rare to find one place that provided guidance, mentorship and experience all under one roof. Plus, UMMC is like a second family to me, which made my decision easier. I am honored and excited to start my pediatric rheumatology fellowship journey this year, I look forward to fulfilling my vision for my career and future academic life.

Mississippi is known for having the largest river in the United states, delicious Southern cuisine, being the birthplace of American blues music, but most of all for its wonderful people with Southern Hospitality!



Program specifics

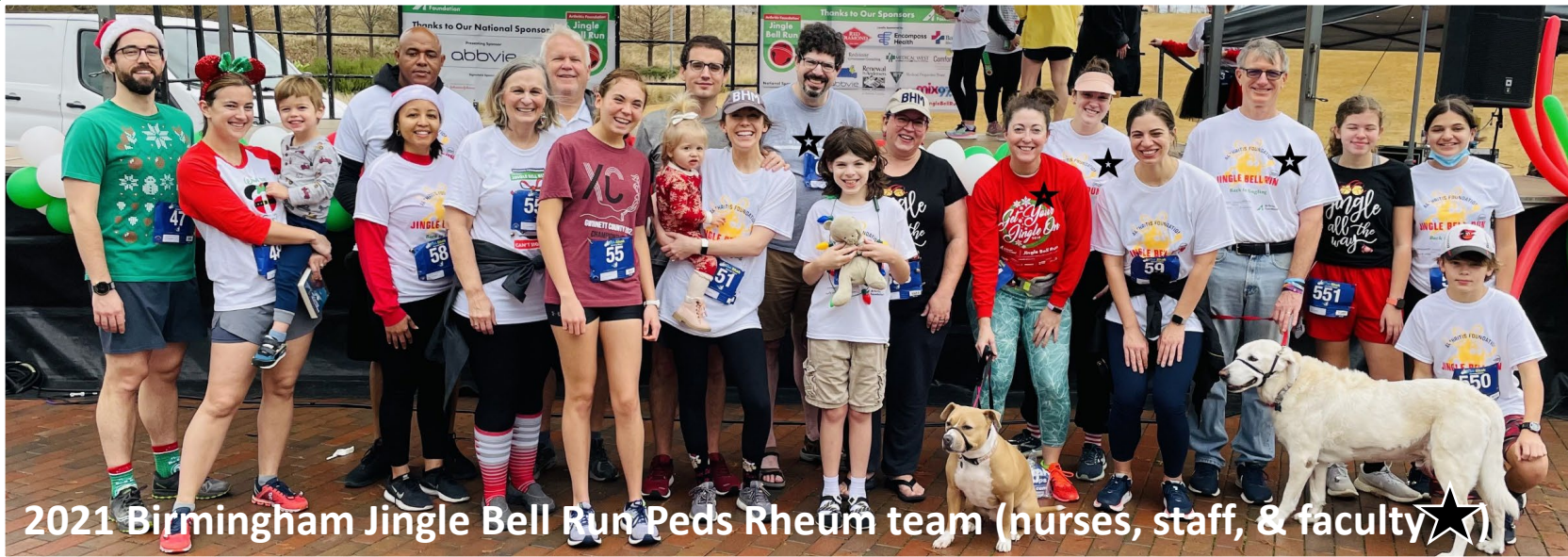
- 3 year program with 1 year of dedicated clinical experience
- Large outpatient volume representing full spectrum of rheumatologic diseases
- Possibility of completing a funded advanced degree in year 2 and 3 of fellowship. Encourages research and other academic activities tailored to fellow's career goals.
- Trains well rounded academic pediatric rheumatologists ready for practice or job at an academic center

Culture

- UMMC is the state's only academic medical center and caters to a pediatric population of over 700,000
- The unique nature of Mississippi's population confers a higher incidence of some autoimmune diseases such as Lupus and Sarcoidosis.
- Disease spectrum ranges from Juvenile arthritis, diffuse pain syndromes, to rare disorders such as Sarcoidosis, dermatomyositis and genetic periodic fever syndromes
- Housed in the state's only children's hospital, this program offers a diversity of experiences both clinical and professional.

University of Alabama at Birmingham Heersink School of Medicine Pediatric Rheumatology Fellowship

Forbes 2021: UAB named America's No. 1 Best Large Employer, No. 4 for Diversity nationally
US News & World Report 2022: Children's of Alabama, #1 in the Southeast



2021 Birmingham Jingle Bell Run Peds Rheum team (nurses, staff, & faculty★)

The Pediatric Rheumatology fellowship program at UAB was ACGME approved in 2009, two years after the Division of Pediatric Rheumatology was created in 2007. The faculty has grown to 5 board certified pediatric rheumatologists with 4 nurse practitioners, making it one of the largest programs in the southeastern United States. A generous donation/endowment allows us to accept 1 fellow every 3 years, but we are flexible to add more with grant funding from the Rheumatology Research Foundation, the Arthritis Foundation, and support from relevant (Rheumatology, Immunology) campus training grants. We practice and impart a reasoned early and aggressive approach to therapy for children with rheumatic diseases, employing a broad range of biologic therapies. A significant amount of "protected" research time (2 of the 3 years) is granted throughout the training period. Those fellows not working in a basic science laboratory are strongly encouraged to get an advanced degree at UAB in public health, clinical epidemiology, or a related field of interest. At graduation, our fellows are well prepared clinically and academically in all aspects of Pediatric Rheumatology. We are also welcome to training MED-PEDS rheumatology fellows in partnership with our adult rheumatology colleagues at UAB (top 10 nationally, US News & World Report). Explore more about our program at: <http://www.uab.edu/medicine/peds/rheum>

We welcome all inquiries.



Dr. Bridges
4th yr Med/Peds



Dr. Reiff
3rd yr Peds



Dr. Rife
1st yr Peds



HOSPITAL FOR SPECIAL SURGERY

 **Weill Cornell Medicine**
Pediatrics

 **New York-Presbyterian**
Komansky Children's Hospital

Welcome to Pediatric Rheumatology!

Located in NYC!

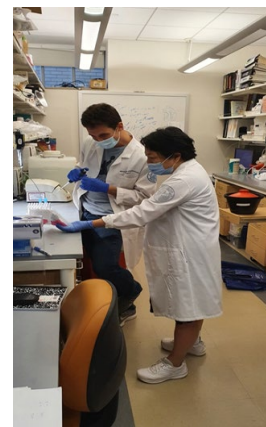
Fellows:

Alisha Akinsete, MD
Leanne Mansfield, MD
Lauren Robinson, MD
Jheel Pandya, MD
Megan Crippen, MS, MD
Caitlin Ensor, MD

Faculty:

Karen Onel, MD – Division Chief
Alexa Adams, MD – PD
Nancy Pan, MD
Sarah Taber, MD
Theresa Lu, MD PhD
Theresa Wampler Muskardin, MD

- **Clinical Training**
 - Pediatric referral center
 - Specialized musculoskeletal hospital
 - Pediatric infusion unit
- **Didactic Program**
 - Robust didactic program
 - Divisional and departmental conferences
 - Multidisciplinary conferences and collaboration
 - Immunology, epidemiology, research didactics
- **Scholarly Activity**
 - Clinical, Translational, Basic Science opportunities
 - Option to pursue graduate training
- **Quality Improvement**
 - Division wide participation, monthly QI conference
- **2022 Graduates**
 - Connecticut Children's, pediatric rheumatology faculty
 - NIH Metzger Scholar in Translational Research



For more information:

<https://pediatrics.weill.cornell.edu/education/fellowships>

<https://www.hss.edu/pediatric-rheumatology-fellowship.asp>

Indiana University Pediatric Rheumatology Fellowship



Program Highlights

- 8 pediatric rheumatologist, 5 nurses, 1 PT, 2 research coordinators, and wonderful admin staff
- Only pediatric rheumatology program in the state of Indiana
- Design a training program that fits your career path (clinical, education, research, QI)
- Weekly Didactics
- Opportunity for Masters in [Clinical Research](#) and Clinical Pharmacology
- [Academy of Teaching Scholars](#)
- [Children's Clinical Research Center](#)
- Faculty leaders in CARRA, AAP and ACR
- Participation in PENTA, ACR, CARRA, PRSYM
- Website: <https://medicine.iu.edu/pediatrics/specialties/rheumatology/fellowship>



PD- Stacey Tarvin
starvin@iu.edu

APD-Melissa Oliver
msoliver@iu.edu

PC- Lyn Terrell
lynterre@iu.edu



Medical University of South Carolina Pediatric Rheumatology Fellowship

Faculty and Fellows



Natasha Ruth
Division Chief and
Program Director
Co-Director, Program
on Physician Well-Being



Emily Vara
Co-Director,
Pediatric Clerkship



Mileka Gilbert
Director, DEI
Associate Program
Director Pediatric
Residency



Aditi Shaily
Current Fellow



**Shawn Jenkins State of the Art Children's Hospital
Opened February 2020!**

Program Highlights

- First established Pediatric Rheumatology Program in the state of South Carolina
- 1 Med/Peds or 1 categorical pediatric fellowship position per year
- Cohesive/Strong relationship with Adult Rheumatology and Adult Rheumatology Fellowship Program-nationally recognized in med/peds fellowship training
- Awarded Highly competitive T32 training grant with Adult Rheumatology
- Two Emeritus Status Physicians who attend fellow's teaching didactic sessions and provide mentorship support
- Internationally/Nationally Recognized Research Programs – Lupus and Scleroderma
- Dr. Ruth is also the Director of Program on Physician Well-Being for the Department of Pediatrics
- Dr. Gilbert is also the Director of Diversity and Inclusion for the Department of Pediatrics
- Dr. Gilbert and Dr. Warren have PhD's in immunology
- Member of Pediatric Rheumatology Care and Outcomes Improvement Network
- Actively recruiting patients into Childhood Arthritis Rheumatology Research Alliance Registry



Kate Silver
Director,
Transition Clinic



Murray Passo
Professor Emeritus



Robert Warren
Professor Emeritus

For more information: [Pediatric Rheumatology Welcome Video](#)

[Click here to learn more about Beautiful Charleston!](#)





Pediatric Rheumatology Fellowship



Kyla D. Driest, MD, MEd – Program Director
Vidya Sivaraman, MD – Associate Program Director
Sarah Jones, C-TAGME – Program Coordinator

Fellowship Overview

4 Rheumatology fellows (1 per year, plus 1 every third year)
ACGME accredited program
EPIC electronic medical record
9 Faculty members with diverse clinical and research interests
Stacy Ardoin, MD, MS – Division Chief
Culture of collegiality, respect, and camaraderie
Arthrocentesis experience with and without sedation/US
MSK US training available with opportunity for certification
Multidisciplinary clinics include psychology, neuropsychology, social work, specialty pharmacy, nephrology, pulmonary, radiology, and OT/PT

Clinical/Research Details

Consult-only service – average of 4-5 consults per week (see table)
1-2 continuity clinics per week – average of 4-5 patients per clinic
First year: primarily clinical with bulk of call assignments; fellow's own continuity clinic plus outpatient assignments when not on call
Senior Years: primarily research with lighter call assignments; fellow's own continuity clinic; more time for scholarly activity with option to obtain master's degree or MSK US certification

Pediatric Fellow Max Call			
Year	Day	Night	Consult
1	26	16	-
2	4	12	4
3	4	12	4
Total	34	40	8

Benefits

Relocation Stipend
Reimbursement for Pediatric Board Exam
Ohio medical license reimbursement
Reimbursement for books and equipment
Health and dental insurance
3 weeks of vacation and holidays off when not on call (cover 2 per year)
Conference attendance
Paid memberships
Scholarships available for advanced degrees

Nationwide Children's Hospital

2nd Largest children's hospital in America
New hospital tower opened in 2012; more expansion coming
Over 1.6 million outpatient visits per year
Over 5,500 Rheumatology outpatient visits each year
Four-time Magnet designation for nursing excellence
US News and World Report Honor Roll
Top 10 NIH pediatric research funding
Teaching facility for OSU College of Medicine
National leader in safety and quality research
Ranked as one of the best employers for diversity by Forbes
LGBTQ healthcare equality leader



Fellow Publication Highlights

Vega-Fernandez P, Ting TV, Pratt L, Bacha CM, Oberle EJ. Ultrasonography in Pediatric Rheumatology. Rheum Dis Clin North Am. 2022 Feb;48(1):217-231. doi: 10.1016/j.rdc.2021.09.009. PMID: 34798948.

Carandang K, Mruk V, Ardoin SP, Huynh B, Clowse MEB, Berlan ED, Edens C. Reproductive health needs of adolescent and young adult women with pediatric rheumatic diseases. Pediatr Rheumatol Online J. 2020 Aug 17;18(1):66. doi: 10.1186/s12969-020-00460-7. PMID: 32807193; PMCID: PMC7433038.

Mulvihill E, Furru R, Goldstein-Leever A, Driest K, Lemle S, MacDonald D, Frost E, Sivaraman V. Targeted provider education and pre-visit planning increase rates of formal depression screening in childhood-onset SLE. Pediatr Rheumatol Online J. 2021 Aug 3;19(1):116. doi: 10.1186/s12969-021-00576-4. Erratum in: Pediatr Rheumatol Online J. 2021 Aug 23;19(1):133. PMID: 34344396; PMCID: PMC8330037.

Columbus

Capital of Ohio
14th Largest city in the US and growing
Over 2 million people in the metropolitan population
In the top 25 best cities for work-life balance
Cost of living is 5.2% below national average
Plentiful family-friendly attractions
Outdoor recreation opportunities and a robust system of metro parks
Wide variety of cultural and arts experiences
A foodie and microbrewery haven
Local sports teams include the Ohio State Buckeyes, the Blue Jackets (hockey), the Crew (soccer), and the Clippers (minor league baseball)



Alumni

Eleven graduates from our program, including two Med/Peds fellows, distributed across seven states and Saudi Arabia



Zucker School of Medicine at Hofstra/Northwell Cohen Children's Medical Center of NY Pediatric Rheumatology Fellowship



Faculty, Fellows, & Staff

- **Program Director:** Heather Walters, MD
 - hwalters@northwell.edu – please contact with any questions!
- **Division Chief:** Beth Gottlieb, MD
- **Other faculty:**
 - Anne Eberhard, MD
 - Joyce Hui-Yuen, MD
 - Zanab Mian, DO

Click to learn more on the [CCMC Pediatric Rheumatology Fellowship website](#)

Program Highlights

Clinical training

- Greater NY area location provides a wide variety of exposure to common and rare pediatric rheumatic disease
- Inpt and outpt practice at a tertiary care children's hospital
- Individual fellow continuity clinics
- Close collaboration and experiences with multiple other subspecialties: nephrology and renal transplant, ophthalmology, radiology, pathology, orthopedics, physical medicine and rehabilitation, and others

Education

- Weekly combined adult and pediatric rheumatology grand rounds
- Weekly pediatric rheumatology didactic experiences (as both learners and facilitators) – interesting case presentations, journal club, external speakers, and more
- Central peds fellow curriculum and statistical course training for all fellows
- Supportive of fellows individualized research interests:
 - Clinical, translational and bench research opportunities
 - Opportunity to work with researchers at [Feinstein Institutes for Medical Research](#) – click to learn more

Environment

Cohen Children's Medical Center of NY



Outpatient clinic



Live in the Greater NY area – experience everything NYC has to offer, the beaches of Long Island, and much more!





Pediatric Rheumatology Fellowship at St. Louis Children's Hospital

Training rheumatology fellows since 1991

1-2 fellows each year

Rigorous clinical training and firm foundation in basic, translational, and clinical research

Additional training in immunology and immunodeficiencies

Special training pathways (dual board certification) are available

Research center for CARRA and a Jeffrey Modell Diagnostic and Research Center for Primary Immunodeficiencies

Contacts: maleewan@wustl.edu (program director) or debwarren@wustl.edu (program coordinator)



<https://pediatricrheumatologyimmunology.wustl.edu/fellowships/>

Pediatric Rheumatology Fellowship program



Our Faculty

- Deborah McCurdy, MD, Program Director
- Alice Hoftman, MD
- Miriam Parsa, MD
- Patrick Whelan, MD, PhD
- Nanci Rascoff, MD, MPH

Our Fellows

3rd Year

- Carlene Samuel, MD

2nd Year

- Leah Medrano, MD

1st Year

Tahnee Spoden, MD

The **Pediatric Rheumatology Fellowship Program** at UCLA started in 2004 and is an ACGME accredited three-year training program providing comprehensive training in pediatric rheumatologic diseases. The training program is designed to prepare specialists in the delivery of skilled medical and consultative care to patients with a broad spectrum of rheumatic conditions found in childhood and adolescence. It is specifically directed towards pediatricians interested in pursuing academic careers in Pediatric Rheumatology with research in clinical, translational, and or basic science. Program Mission – Excellence in:

- Patient Care
- Research
- Education

Strengths of our Fellowship Program

Our program is clinically based in the Mattel Children's Hospital within the Ronald Reagan Medical Center located on the large academic campus of UCLA. RPMC is dedicated to excellence in quaternary care for children and adults. As such, our fellows have direct access to clinical opportunities and to faculty skilled in treating both children and young adults. Fellows also have opportunities in community care at our Santa Monica and two county hospitals. Diverse research excellence over many disciplines is readily accessible to our fellows and has proven a rich resource for basic and translational science opportunities for our fellows here on our own doorstep.



Faculty:

AnneMarie Brescia, M.D.
Salma Siddique, D.O.
Evan Mulvihill, M.D.

Fellow:

Lina Al-Jaberi, M.D.



Staff:

Candy Patterson, RN:
Specialty Nurse
Heather Szymborski:
Administrative Assistant
Beverly Sullivan: Insurance
Verification Representative



We are a small program in a free-standing children's hospital

- individual attention to each fellow
- rotate with world-renowned orthopedic/sports medicine specialists
- rotate with interventional radiology for arthrocentesis
- rotate with adult rheumatology
- many opportunities to design individual research program

Located on the East
Coast in Wilmington, DE

- close to DE beaches
- close to Philadelphia



Thomas Jefferson University/ Nemours Children's Health, DE

University of Colorado Anschutz Medical Campus

Pediatric Rheumatology Fellowship



Affiliated with
University of Colorado
Anschutz Medical Campus

Click blue hyperlinks for more information. Contact [Megan Curran](#), fellowship director, and [Lindsay Neveaux](#), fellowship coordinator via these email links

Faculty, Fellows and Staff

- 9 physicians, 2 nurse practitioners
- 6 fellows: 2 per academic year
- 7 nurses, 2 medical assistants, patient navigator, rheum clinical pharmacist, rheum pharmacy tech, social worker

Program Specifics

Clinical Sites

- [Children's Hospital Colorado](#)
- Pediatric rheumatology [clinic](#)
- [Adult rheumatology](#) clinic

Academic Sites & Oversight

- [Campus](#) with multiple professional schools & hospitals, all committed to [diversity, equity and inclusion](#)
- University of Colorado [School of Medicine](#) & [Department of Pediatrics](#)
- Section of Pediatric Rheumatology [academic](#) & [recruitment](#) websites
- Adult rheumatology [fellowship](#)
- [Graduate Medical Education](#) office
- Dept of Peds [fellowship oversight](#)



Top row, left to right: [Brian](#)*, [Gabe](#)*, [Jen](#)*, [Rob](#)*, Inna~, Christine~, [Katie](#)*, Lyndsey~, Lindsay #, [Megan](#)* 2nd row: Colette^, Jenny*, Ingrid %, Indira~ 3rd row: [Clara](#)*, KD~, Meg~. Bottom row: Eliana♥, Jill♥, Libby♥, Wesley♥ Key: *faculty, ~fellow, # fellowship coord, ^family navigator, % pharmacist, ♥cutie Faculty not pictured: [Jessica](#), [Michelle](#), [Holly](#)

Program Structure

- 1st year primarily clinical with 4 weeks [research](#) time; 2nd & 3rd year chiefly [research](#) with continuity clinic
- Multiple weekly academic & case conferences, some shared with adult rheum faculty & fellows

Program Culture

- Collaborative & fun life-long learners
- Devoted to patient-centered care for common & rare rheum disorders
- Provide quality care & telehealth for remote & underserved families
- Outpatients scheduled with fellows (not faculty) as primary provider, allowing for longitudinal relationships
- Evidence & experience-based teaching
- Training tailored to fellow career goals

Hospital Culture

- Large quaternary care referral center: patients, many rural, from 7 states
- Committed to patient, faculty, staff & trainee wellness: medical dogs, Halloween festivities, provider lounge

Geographic Area

- Denver & Aurora: restaurants, shows, nightlife, sports teams, new housing
- Colorado: hiking, biking, rafting, camping, nature, MOUNTAINS!





Medical College of Wisconsin Pediatric Rheumatology Fellowship



<https://www.mcw.edu/departments/pediatrics/divisions/rheumatology/fellowship-program>

Faculty & Fellows

Program Highlights

Life in Milwaukee

Clinical Experience

- Fellow continuity clinic with graded autonomy
- Busy children's hospital with wide catchment area: inpatient consult opportunities
- Clinical experience with entire spectrum of rheumatic, autoinflammatory, autoimmune, and musculoskeletal disease

Education

- Conferences: case review, journal club, patient safety, med-peds rheumatology, joint fellowship curriculum
- Immunology review series & weekly board preparation

Institution Culture

- Supportive faculty with expertise in clinical care, education, basic and translational research
- Collaboration with other subspecialists
- Outstanding nurses & support staff



The Pediatric Rheumatology Fellowship Program at Hackensack University Medical Center

Program Director: Ginger Janow, MD, MPH (email: ginger.janow@hmhn.org)

Program Coordinator: Miranda Juras (email: miranda.juras@hmhn.org)



Who we are:

- Seven board-certified pediatric rheumatology attending physicians and one nurse practitioner: we are the largest division in the tri-state area, serving patients in the tri-state region & beyond
- Vibrant pediatric residency program and academic research with Center for Discovery and Innovation providing basic and translational science experiences
- The program mission is to create competent, confident, empathetic, and unbiased academic pediatric rheumatologists who have the tools to succeed as lifelong learners.

Our newest faculty member photoshopped in!



Second year fellow, Tresa Ambooken, MD, MBA, on left; PD G Janow, MD, MPH on right



Program Highlights:

- Extensive opportunities for involvement in education at medical student and resident level with our new innovative medical school, Hackensack Meridian School of Medicine
- Multiple opportunities to participate in investigator initiated and industry sponsored research projects, as well as ongoing translational and inter-institutional projects
- High level of involvement in CARRA, the Registry, & PR-COIN, a national pediatric rheumatology QI network
- Opportunities to attend CARRA & PR-COIN workgroups, workshops and inter-institutional meetings
- Community involvement through our local Arthritis Foundation
- Scleroderma Center of Excellence
- MSKUS training opportunities

Location Highlights:

- 12 miles NW of midtown Manhattan, 7 miles from George Washington Bridge
- Population 44,756 (19% <18 years old; 38% foreign-born; 32% speak Spanish at home)
- 46% White, 24% Black, 10% Asian; 35% Hispanic of any race
- Transportation hub (NJ Transit trains and buses, Amtrak and Newark Airport)
- Jersey Shore campus close to the beach
- Home to Fairleigh Dickinson University (Metropolitan Campus), Bergen County College, Eastwick College, the NJ Naval Museum



Hackensack Meridian
Children's Health at
Joseph M. Sanzari Children's Hospital