

Emory University

Pediatric Pulmonology Fellowship Program



EMORY
UNIVERSITY



Children'sSM
Healthcare of Atlanta

- Arlene Stecenko, MD
Chief
- Eric Price, MD
Program Director
- Sheel Shah, MD
Associate Program Director
- Katherine Price Farmer, MS
Program Coordinator
- >25 Pediatric Pulmonologists
across 2 hospital campuses
- 6 Pediatric Pulmonology
Fellows

Geographics:

Atlanta, GA is a diverse, cosmopolitan, hospitable, tree-filled city of over 5 million people with seasonal climate suitable for nearly year-round outdoor activities.

Program specifics:

- 300-bed teaching hospital
- 36-bed Pediatric ICU
- 26-bed Cardiac ICU
- 45-bed Neonatal ICU
- 12-bed sleep lab
- Large ambulatory center (Center for Advanced Pediatrics)
- State of the art pulmonary function labs
- 2nd largest cystic fibrosis population in the country
- Large Hematology/Oncology program including sickle cell disease and Bone Marrow Transplant program
- Over 250 Technology dependent patients
- Hospital and many subspecialties consistently rank in Top 20 USNWR
- New Arthur M. Blank Hospital opening Fall 2024 with >400 beds

Separate inpatient and consult services

Inpatient service includes general pulmonology, cystic fibrosis, and technology dependent patients. Typically this service has 15-20 patients and the fellow will work in collaboration with an advanced practice provider (APP), resident, and attending physician.

Consult service includes wide variety of medical diagnoses, typically 30-35 active patients list. Fellow works in collaboration with APP and attending physician. Fellows perform bronchoscopies while on consult service.

Research Opportunities:

- Abundant scholarly opportunities including translational, basic science, and quality outcomes research
- FiRST (Fellowships in Research and Science Teaching) program introduces research resources to first year fellows
- Fellows have been awarded Cystic Fibrosis Foundation Fellowship Grant each year for the last 5 years

Bronchoscopy experience:

- State of the art bronchoscopy equipment and endoscopy suite
- Fellows will perform at least 80-100 bronchoscopies by the end of fellowship

About Us

We believe in the right balance of challenge and support to develop well-rounded, exceptionally trained pediatric pulmonologists who can excel in any clinical environment and advance the field through patient care, education or scholarship. We instill a growth mindset and nurture our fellows to achieve their career goals in an academic environment full of learning opportunities

Pulmonary
Family

Fellows
College
Community



**Large program
4 fellows per
year (new)**
Life long relationships
Less nights on call
Work life integration

**Centers of
Excellence**
Lung Transplant
Pulmonary
Hypertension
CF, Aero, PCD, etc

Scholarship
More than 1 mentor
SOC chairs
Strong ATS presence
Clinical, education,
basic science
QI coach

Education
Individualized
curriculum
Formalized pulm and
multidisciplinary
conferences



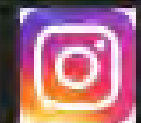
**Pulm Fellows Team a.k.a It Ain't Easy Being Wheezy
2022 Fellows College Field Day Winners!**

**Part of a
larger
community of
fellows**
Fellow advocates
Townhalls

**Wellness Day
Fun**
Minute to win it
games
Field Day
Massages
Prizes

**Core
curriculum**
Diversity, Equity,
Inclusion
Career Dev
Research
Professionalism

Scholarships
For advanced
degrees



@Bcmpedspulmonary



WE'RE THE #1 CHILDREN'S HOSPITAL IN NEW YORK

BEST CHILDREN'S HOSPITALS
NORTHWELL
NORTHSHORE
LONG ISLAND
SYNCHRONIZED

MAGNET RECOGNIZED
AMERICAN NURSES CREDENTIALING CENTER

- Level I Pediatric Trauma Center
- ECMO
- 26 bed PICU
- Two 50 bed level IV NICU
 - Carpe Diem
 - LDL Apheresis



Ranked number 31 of Best Children's Hospitals for Pulmonology in the United States by U.S. News and World Report 2021.





- 1,500 clinicians, scientists and staff
- Over 2,000 studies
- > \$20 million in NIH funding

Aims of the Pediatric Pulmonary Fellowship program:

1. To provide comprehensive training that encompasses clinical and procedural expertise in the inpatient and outpatient settings for pediatric patients with a wide spectrum of respiratory diseases.
2. To provide the foundation, opportunities, and mentorship for basic, clinical or translational research to include quality improvement that will complement clinical expertise and/or prepare the trainee for an academic career in scientific research.
3. To provide opportunities to develop teaching capabilities at bedside or in structured/scheduled didactic sessions within the Division, with pediatric residents, medical students, and para-medical personnel.
4. To foster and serve as role models in espousing respect for diversity, inclusion, professionalism, and provision of care that is culturally sensitive and competent.

Faculty:

Dr. Maria Teresa Santiago - Chief
 Dr. Annabelle Quizon - Fellowship Program Director
 Dr. Joan German - CF Director
 Dr. Kristin Kelly-Pieper - Sleep Program Director
 Dr. Monal Patel - BPD and Pulmonary Hypertension Pulmonologist
 Dr. Noel Gonzalez - PFT Lab Director
 Dr. Elizabeth Fiorino - Medical Education



Pediatric Pulmonology Fellowship

Stephen Kirkby MD, Program Director
Lisa Ulrich MD, Associate Program Director
Beth Bogedain, Program Coordinator

Fellowship Overview

6 Pulmonary fellows (2 per year)
ACGME accredited program
Combined adult/pediatric pulm pathway available
16 Faculty with Diverse Clinical and Research Interests
Culture of Collegiality, Respect and Camaraderie
Karen S. McCoy MD, Division Chief
Richard Shell MD, Section Chief
NationwideChildrens.org/Pediatric-Pulmonary-Fellowship

Nationwide Children's Hospital

2nd Largest Children's Hospital
Over 1.6 million Outpatient Visits per Year
New Hospital Tower Opened 2012, more expansion coming
Over 10,000 Outpatient Visits Each Year
US News and World Report Honor Roll
Top 10 NIH Pediatric Research Funding
Teaching Facility for OSU College of Medicine
National Leader in Safety and Quality Research



Clinical Training

Large Inpatient & Consult Services
Subspecialty Clinics/Procedures/PFTs Rotation
Elective Opportunities
Fellow Pulmonary Continuity Clinic- weekly
Bronchoscopies: Average Fellow performs > 100
Bronchoscopy and Tracheostomy Simulator
Subspecialty programs in: Neuromuscular, Spinal
Muscular Atrophy, Sleep, Transplant, Aerodigestive,
ILD and PCD

Scholarship & Research Activities

Renowned Hospital, Research Institute and University
Funds Available by Competitive Grant Submission
Supportive Scholarship Oversight Committees
Obtain an Advanced Degree during Fellowship
CFF Research Development Program
Hospital-wide Research Curriculum

Fellow Scholarly Activities

2019-2022
13 Publications
34 Abstracts
7 CFF Grants totaling \$510,000



NCH Video Links

[NCH pulm tourhttps://vimeo.com/449441298](https://vimeo.com/449441298)
[Nationwide Children's Hospital: Complete Campus Tour – YouTube](#)
[Fellowship Programs | Nationwide Children's Hospital Fellowship Opportunities – YouTube](#)
<https://youtu.be/JAeOlq2bB8o->

Columbus

14th Largest City in US and Growing
Over 2M People in Metropolitan Population
Cost of Living 8% Below National Average
Capital of Ohio



Benefits

ERAS/NRMP
Relocation Stipend
Reimbursement for Pediatric Board Exam
Ohio License Reimbursement
Health & Dental Insurance and Annuity Funds

Alumni

96% of Graduates in Academic Centers across 13 states
67% of Division Faculty are Fellowship Alumni



CHLA Pediatric Pulmonology Fellowship Program

- Provide compassionate and comprehensive clinical care to children with social and medical complexity
- Develop long lasting relationships with your patients
- *Truly breathe* pulmonary physiology
- Advance the field through research, QI, education, and ethics
- Obtain the right mentorship to achieve your career goals





Program Leadership Program specifics

- Program Director
 - Ignacio Tapia, MD
 - Associate Program Directors
 - Olufunke Afolabi-Brown, MD
 - Pelton Phinizy, MD
 - Division Chief
 - Lisa Young, MD
 - Program coordinator
 - Kathleen Tiernan
- Flexibility with curriculum tailored to fellows' growth and learning
 - 50% Protected time in the first year for scholarly activity
 - Formal training opportunities at Upenn
 - T32 Funding opportunities
 - Abundant clinical opportunities inpatient and outpatient
 - Interventional bronchoscopy
 - Lung Transplant

Program Culture

Fellow-centered program with a strong emphasis on achieving a balance between clinical training and scholarly pursuit. Provides broad clinical exposure ranging from common pulmonary diseases to highly specialized, multidisciplinary care of rare disorders.

Institution Culture

Develop leaders in clinical, academic, and community medicine through active recruitment, career development, mentorship and social opportunities by fostering inclusivity and ensuring equitable access to care.

Geographic area/Culture

- Town of "Meds and Eds"
- World-Class Dining
- Sports, museums, rich history
- Affordable living in the city or the burbs
- Walkable/Bikeable, easy to own a car, good public transit

‘Training pediatric pulmonologists for today while teaching for tomorrow’

A “hospital within a hospital”

Collaboration with adult program

Autonomy – 1 fellow per year

“The fellow runs the show”

Easy access to leadership

Diverse areas of interests among faculty

Opportunities for research within Harvard

Focus on Work/life balance

**Coaching program – focus on mitigating burnout
and increasing wellness**

Robust bronchoscopy program

Specialty clinics

Aerodigestive, BPD, CF, Pulmonary Genetics, Sleep



Mass General Brigham

Mass General for Children

Video Links

[Day in life of a pulmonary fellow](#)

[GME at MGH](#)

[Virtual tour](#)

[Pulmonary Fellowship at MGH](#)

MGH Pedi Pulm Fellowship website: <https://bit.ly/3OvZExZ>

Ben Nelson, MD – Program Director

banelson@mgh.harvard.edu

Bernard Kinane, MD – Division Chief

Carly Maria – Program Manager

cmaria@mgh.harvard.edu



- Training in the Texas Medical Center (TMC), the largest medical complex in the world
- We accept 1-2 fellows / year
- Multicultural, multinational, diverse faculty & staff
- 100% ped pulm board pass rate on first attempt for all graduates since inception
- Customized curriculum and didactic lectures to accommodate fellow needs and career aspirations
- Multiple pulmonary subspecialty clinics and diagnostic tools to broaden clinical experience
- Grant funded research and courses to enhance fellow scholarly project development
- Individualized faculty mentorship for clinical and scholarly development

University of Texas Health Science Center at Houston

Program 3304821056

<https://med.uth.edu/pediatrics/pulmonary-allergy-immunology-rheumatology/>

Pediatric Pulmonary Fellowship

Program specifics

- Pulmonary hospital consultation service at a large children's hospital with a diverse patient population and wide variety of respiratory disorders
- At-Home pager night call
- Weekly half-day continuity clinic
- Monthly pulm subspecialty clinic rotation primary ciliary dyskinesia, bronchopulmonary dysplasia, congenital diaphragmatic hernia, sickle cell-pulmonary, pulmonary hypertension, and more
- Diagnostic tool utilization and study interpretation
cardiopulmonary exercise test, impulse oscillometry, nasal nitric oxide, video microscopy, airway endoscopy and other procedures



Program Culture

- Deliver compassionate care to diverse patient populations
- Promote interprofessional collaboration and success
- Mutual respect and support

Institution Culture

- Educate diverse body of physicians and scientists
- Provide outstanding patient-centered care
- Conduct innovative research
- Foster a diverse and inclusive learning community
- Reduce health care disparities

Houston, TX

- 4th largest city in US
- Multicultural population with diverse opportunities for events, shopping, and restaurants
- Relatively low cost-of-living with housing available near TMC
- Many activities, events, & parks that improve work-life balance



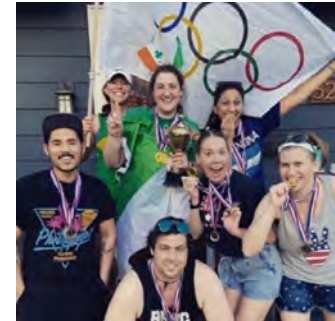


Pediatric Pulmonology Fellowship



- Program Director: Angela Delecaris
- Associate PD: James F. Chmiel
- Program Coordinator: Kara Welch
Email: kalwelch@iu.edu
- <https://medicine.iu.edu/pediatrics/specialties/pulmonology/fellowship/categorical>

- Faculty are dedicated to exceptional training and mentorship preparing future academic leaders
- Exposure to complex pathophysiology, diverse patient interactions, and cutting edge research experience with direct mentorship from NIH and CFF funded physician scientists
- Fellows have come from diverse backgrounds and are committed to promoting inclusive and equitable healthcare
- Our culture promotes community and a sense of belonging to support each individuals' well-being
- Program graduates practice as clinician educators and physician scientists throughout the country in large academic institutions as well as smaller community academic practices



Riley Children's Health
Indiana University Health

BEST CHILDREN'S HOSPITALS
US News & World Report

MAGNET
ACCREDITED

22,300 ADMISSIONS AND OBSERVATIONS*

456 BEDS

200 PRIMARY CARE + **400** SPECIALTY CARE physicians across 40 specialties

19 COMMUNITIES

6th ranked CHILDREN'S HOSPITAL for research funding

254 RESIDENTS AND FELLOWS

COMPREHENSIVE CHILDREN'S HOSPITAL AND HEALTH SYSTEM

INDIANA UNIVERSITY HEALTH

INDIANA UNIVERSITY SCHOOL OF MEDICINE

*2022 US News & World Report Best Children's Hospitals ranking. Data as of 12/31/2021.



SCHOOL OF MEDICINE Pediatric Pulmonology



*Charles R. Esther Jr.,
MD, PhD*

*Pediatric Pulmonology
Training Program
Director*

Why choose UNC for your pediatric pulmonology training?

Our fellows learn (and teach)

With over a dozen faculty with diverse expertise in CF, PCD, ILD, BPD (and more), our fellows learn from nationally recognized experts. Fellows help lead our inpatient team and teach residents and students

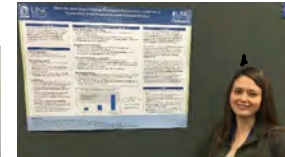
Fellows practice in multi-disciplinary clinical centers provided specialized care, including:



- Bronchoscopy: 500-700 annually including intubations, brush biopsies, and more
- Cystic Fibrosis: Largest center in the state, follows over 300 children with CF.
- PCD: one of ten PCD Clinical and Research Centers nationwide
- NC Children's Airway Center: multi-disciplinary care with ENT, pulmonary, sleep medicine, speech therapy.
- UNC Children's Allergy & Asthma Center: NC's only comprehensive asthma center

Our fellows are scholars

UNC fellows participate in a wide range of scholarly activities from QI, basic science, translational work, and clinical studies. They attend and present at conferences and have great success with grants and manuscripts



Fellows can work within nationally recognized research centers including

- Marsico Lung Institute: one of the most academically productive basic and translational science institutes for pulmonary diseases in the nation
- Center for Environmental Medicine Asthma and Lung Biology with expertise in human exposure studies
- Many opportunities with School of Public Health, Global Health Program, Clinical Masters Program and more



Our fellows go places

Our graduates accept positions at top academic institutions and become future leaders

During fellowship, our trainees enjoy University arts and sports as well as more urban pursuits in nearly Raleigh. And they can get away from it all with the mountains and beach only hours away





UT Southwestern Division of Pediatric Pulmonology and Sleep Medicine



Program Director
Tanya Martinez, MD

Associate PD
Preeti Sharma, MD

Program Coordinator
Lilibeth Goode

- 490 licensed beds makes Children's Medical Center Dallas one of largest pediatric healthcare providers in the nation
- Large regional center with diverse and expanding patient population
- ACGME accredited program
- Combines research strengths of UTSW with broad clinical training ground of CMC Dallas.
- Clinical multidisciplinary programs include
 - CF center and trach/vent programs with 300+ pts each
 - Neuromuscular program
 - Aerodigestive
 - Primary Ciliary Dyskinesia
 - Difficult to treat asthma
 - Sickle Cell Disease
 - Sleep Center
- Career development with 1:1 faculty mentor
- Flexibility in curriculum to accommodate individual fellow's interests.
- Option to complete sleep medicine fellowship
- Simulation training

UT SOUTHWESTERN MEDICAL CENTER

- > \$400 million in annual funding
- 6 Nobel Laureates in past 35 years
- > 20 members of the National Academy of Sciences

DALLAS-FORT WORTH

- Rapidly growing population
- 4th largest metroplex in the US
- Top destination for young professionals
- Reasonable cost of living
- Diverse population



Most graduates join academic workforce

Current ATS Aspire Fellow

- Supportive, collegial and inclusive core faculty with diverse interests
- Multidisciplinary Team
- Work-Life Balance

• Fellows



JOHNS HOPKINS

CHILDREN'S CENTER

Pediatric Pulmonology

PEOPLE

- 11 faculty in Division
- 5 fellows total
- Program Director: J. Michael Collaco
mcollac1@jhmi.edu
- Program Coord.: Teresa Milligan tlusco@jhmi.edu

PROGRAM SPECIFICS

- 3 year fellowship funded by the NIH
- Diverse inpatient and outpatient clinical experiences with elective time
- Multiple opportunities for mentored research projects (basic science, clinical, global, etc.)
- Structured educational program, including training in public health
- Assistance in career development

Program Culture: We pride ourselves on providing broad clinical, research, and educational experiences for our fellows, all of which are personalized to meet the fellow's needs. Our program is fellow-centered and always striving to be best with frequent feedback from our fellows.

Institutional Culture: Johns Hopkins Medical Institutions provides a wealth of clinical, research, and educational opportunities for fellows seeking to pursue academic careers and be leaders in the field.

Geographic Area: Johns Hopkins is located in the Mid-Atlantic region (Baltimore) with amazing cultural, culinary, and recreational scenes. Between Baltimore and nearby Washington DC there are numerous employment options for significant others.

UC San Diego Pediatric Pulmonary Fellowship

UC San Diego
SCHOOL OF MEDICINE

Rady
Children's
Hospital
San Diego



- We care for patients as part of Rady Children's Hospital San Diego, the largest children's hospital in California, and one of the largest in the country.
- A broad catchment area captures patients from urban, suburban and rural environments from all socioeconomic, religious, and cultural backgrounds.
- UCSD is one of the leading bio-medical research institutions in the world.
- Known as America's Finest City, San Diego offers access to beaches, mountains, big-city amenities... and perfect weather.



SUB- SPECIALTY CLINICS

- Aerodigestive
- Complex Sleep Apnea
- Cystic Fibrosis
 - Endocrinology
 - Gastroenterology
 - Newborn Screen
- Bronchopulmonary Dysplasia
- Post Bone Marrow Transplant
- Neuromuscular Disease
- Positive Airway Pressure Therapy
- Severe Asthma
- Pulmonary Hypertension

The largest children's hospital in California, and one of the largest in the country with 551 beds

Rady Children's Hospital Highlights

- **Care to 281,469 children**
- **254,621** outpatient/specialty clinics visits
- **15,289** inpatient admissions
- **2000** sleep studies
- **140** pediatric cystic fibrosis patients
- **400** aerodigestive patients
- **225** tracheostomy patients

Past and Present Fellow Research Projects:

- Asthma pharmacogenomics
- PAP adherence in Duchenne muscular dystrophy
- Metagenomic sequencing and host response in the aerodigestive population
- Bicarbonate antimicrobial activity in chronic lung infections
- Single cell analysis in lung development

- Fellows: Danielle Munce (dmunce@health.ucsd.edu), Richard Wong (rwong3@rchsd.org), Amanda Khoury (a1khoury@health.ucsd.edu)
- Program Director: Dan Lesser (dlesser@rchsd.org)

1 ST YEAR ROTATIONS	WEEKS
24 inpatient	2 week block
12 outpatient	2 week block
PICU	2
Pulmonary Lab (PFT/Sleep)	2
Research	8
Vacation	4
Weekly continuity clinic when not inpatient or vacation	

2 ND & 3 RD YEAR ROTATIONS	WEEKS
Research	40
Inpatient	8
Outpatient	2
Vacation	4
Weekly continuity clinic when not inpatient or vacation	



Visit our website!

‘Training pediatric pulmonologists for today while teaching for tomorrow’

A “hospital within a hospital”

Collaboration with adult program

Autonomy – 1 fellow per year

“The fellow runs the show”

Easy access to leadership

Diverse areas of interests among faculty

Opportunities for research within Harvard

Focus on Work/life balance

Coaching program – focus on mitigating burnout and increasing wellness

Robust bronchoscopy program

Specialty clinics

Aerodigestive, BPD, CF, Pulmonary Genetics, Sleep



Mass General Brigham
Mass General for Children



MGH Pedi Pulm Fellowship website: <https://bit.ly/3OvZExZ>

Ben Nelson, MD – Program Director
banelson@mgh.harvard.edu

Bernard Kinane, MD – Division Chief

Carly Maria – Program Manager
cmaria@mgh.harvard.edu

University of Michigan Pediatric Pulmonary Fellowship



Program people

- Two fellowship slots per year (new)
- 11 pulmonologists
- Five nurse practitioners



Program specifics

- Concurrent Masters degree in Clinical Research, Bioinformatics, others (new)
- Concurrent Scholars Programs: medical education, healthcare administration, healthcare disparities
- Opportunities for blended training (pulm-sleep, pulm-hospitalist, pulm-critical care)
- All relevant clinical programs (asthma, CF, home ventilator, PCD, bronchoscopy, ChILD, aerodigestive, others)
- NIH-funded research mentors

Program Culture

- Commitment to developing personalized training pathways

Institution Culture

- Diversity, equity and inclusion are strongly valued

Geographic area

- Ann Arbor is consistently voted one of the best places to live in the US

Pediatric Pulmonology Fellowship at the Icahn School of Medicine at Mount Sinai

The People

- Six faculty members
- One fellow per year
- Two nurse practitioners
- Two asthma social workers
- One pulmonary function test technician
- One fellowship coordinator



The Program

- Pediatric interventional bronchoscopy program
- Inpatient Chronic Lung Care program with the BPD Collaborative
- Outpatient multidisciplinary clinics:
 - Aerodigestive
 - BPD and technology-dependent
 - Healthy lifestyles
 - Neuromuscular
- Outpatient specialized clinics:
 - Cystic fibrosis
 - Pulmonary hypertension
 - Severe asthma / monoclonal antibody therapy
 - Sleep medicine
- Fellows continuity clinic
- Robust didactic curriculum
- Research mentorship program
- Yearly Divisional retreat

The Culture

- Inclusive and collaborative environment
- Active Diversity, Equity, and Inclusion Program
- Diverse patient population
- Located on the border of East Harlem and the Upper East Side of New York City
- Rooftop views and ready access to Central Park
- Low threshold to celebrate anything and everything!



Icahn
School of
Medicine at
**Mount
Sinai**

*Kravis Children's
Hospital*
Department of Pediatrics

Pediatric Pulmonary Fellowship @Columbia

Program Highlights:

Diverse patient population (demographics & pathology)
NYC's largest pediatric Cystic Fibrosis center
Outstanding research mentorship and opportunities
Many specialized/multidisciplinary outpatient clinics
(Trach, aerodigestive, CDH, neuromuscular & more)
Pediatric-specific PFT and sleep labs
Individualized curriculum design for each fellow
Inclusive environment with a diverse workforce



- Accessible via 1, A, and C trains and M2, 3, 4, 5, 100 bus lines
- Local hospital housing and parking is available
- Food stipend of \$100 per month



PGY4 \$90,484
PGY5 \$93,558
PGY6 \$95,238

University of Washington/Seattle Children's Hospital Pediatric Pulmonology Fellowship



- Program Leadership:
Ron Gibson MD, PhD (Program Director)
Jon Cogen MD, MPH (Associate Program Director)
Becca Smith (Program Coordinator)
- Mission Statement:
“Train pediatric pulmonologists to be skilled clinicians with a foundation in physiology, critical thinkers, avid teachers, and who improve care via scholarship and programmatic development”
- Program Specifics:
 - Fellowship is an ‘academic playground’, goal to tailor the fellowship curriculum to each fellow
 - Focus on physiology with robust physiology curriculum
 - 16 wks inpt, 2 wks ICU, 4 wks sleep YR 1; 8 wks inpt YRS 2 and 3
 - Weekday PM call from 7p-7a each night by ‘off-service’ colleagues including Attendings
 - Subsidized Coursework for research skills (ability to obtain a master’s degree from the University of Washington)
 - Opportunities for outreach clinics (Eastern WA and Alaska)
 - Highly committed to EDI: <https://sites.uw.edu/uwgme/equity-diversity-inclusion/>



Contacts: Twitter: @UWPedsPulm
Ron Gibson (ron.gibson@seattlechildrens.org)
Becca Smith (becca.smith@seattlechildrens.org)

Stanford University Program

Stanford Health Care-sponsored



Stanford
MEDICINE



Stanford
Children's Health

Lucile Packard
Children's Hospital
Stanford

Program Director:

MyMy Buu, MD



Past Program Director:

John Mark, MD



Program Coordinators:

Maya Melendrez,
Marifin Besona



Fellows:

- Lori Lee, MD, PhD
- Trang Dinh, MD
- Jean Lee, MD
- Kalen Hendra, MD
- Jeff Ni, MD



Training Program

Clinical Training

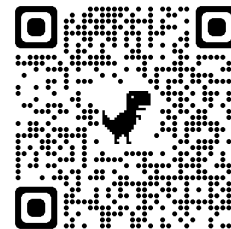
- 12-16 months
- 24 weeks overnight call
- Clinical Centers:
 - Aerodigestive
 - BPD/Pulm HTN
 - Cystic fibrosis
 - Interstitial lung disease
 - Lung transplant
 - Neuromuscular disease
 - Primary Ciliary Dyskinesia
 - Sleep



Non-clinical Training

- 17-21 months
- 3 months vacation

<https://med.stanford.edu/pedpulmonary>



Program Culture

- Fellow education/training prioritized
- Mentorship of careers in academic pediatric pulmonary medicine
- 19+ faculty members, + NP/PA, RNs, RTs, RDs, MSW, PharmD, PT, MAs, Child Life, Psych



Institution Culture

- Free standing children's hospital on Academic campus
- Bring science and medicine together for clinical, translational and bench discovery
- Education support infrastructure in Dept of Peds, GME, School of Medicine for 128 fellows in 22 fellowship programs

Geographic Area

- Silicon Valley/San Francisco Bay Area in Northern California
- Diverse population – ethnic, cultural, socioeconomic





University of California, San Francisco Pediatric Pulmonology Fellowship Program

Our Mission

To produce outstanding and compassionate clinicians who will become the future academic leaders, innovators, and educators in pediatric pulmonary, cystic fibrosis, and sleep medicine

Our Aims

We work to provide a rigorous, broadly inclusive, and supportive training environment that:

- Develops superior clinical skills with an emphasis on patient-centered, interdisciplinary, longitudinal, and evidence-based care
- Stimulates intellectual curiosity and critical thinking by offering a broad range of scholarly opportunities
- Fosters individual passions by providing personalized support and effective mentorship

Program Highlights

- UCSF is one of six federally-funded centers providing post-graduate level interdisciplinary leadership training with Nursing, Pharmacy, Nutrition, and Social Work
- Weekly Fellow's Conference: Didactics, Challenging Cases, Journal Club, M&M, Respiratory Physiology
- Monthly Fellow's Research Meetings for discussion and feedback
- Advanced training seminars in Global Health, Equity and Inclusion, Quality Improvement, Health Equity and Racial Justice, Simulation Teaching, and more!
- Supporting our Fellows
 - Quarterly Fellow's Forum with program leadership
 - One wellness day per quarter
 - Annual educational stipend

	<u>Inpatient</u>	<u>Outpatient</u>	<u>Scholarly</u>	<u>Vacation</u>
Year 1	32 weeks	10 weeks	6 weeks	4 weeks
Year 2	8 weeks	4 weeks	36 weeks	4 weeks
Year 3	8 weeks	4 weeks	36 weeks	4 weeks
Continuity Clinic	2 half-day sessions per month			
Cystic Fibrosis Clinic	1 half-day session per month			
Multispecialty Clinics	1 half-day session per month			

Fellows' Accomplishments

- Clinical and research grants from the Cystic Fibrosis Foundation
- Innovations Funding in Education grants from the UCSF Academy of Medical Educators to develop online teaching modules for medical students and residents
- Oral and poster presentations at the American Thoracic Society International Conference and North American Cystic Fibrosis Conference
- Authorship in high-impact journals including *Chest*, *Journal of Allergy and Clinical Immunology*, and *Annals of the American Thoracic Society*

Contact Us

Kensho Iwanaga, MD, MS | kensho.iwanaga@ucsf.edu

Marilynn Chan, MD | marilynn.chan@ucsf.edu

Kaitlin Clancey, MS-HCA | kaitlin.clancey@ucsf.edu





Pediatric Pulmonary staff & specialties:

- Marc Schechter, MD
 - Division Chief, Lung transplant
- Mary Wagner
 - Pediatric Sleep
- Sreekala Prabhakaran, MD
 - Pediatric Sleep, Pediatric Severe asthma, tech – dependent
- Dima Ezmigna, MD
 - Fellowship Program Director
 - Sickle cell, Pulm Hypertension, Diffuse lung disease
- Silvia Delgado, MD
 - Director CF center. Bronchopulmonary dysplasia
- Carmen Leon, MD
 - Neuromuscular disorders, Aerodigestive
- Pediatric Pulmonary Fellows:
 - Kevin Kokesh -3rd year
 - Mutaz Alsanjalawi- 2nd year
 - Aditi Pant -1st year

Program description & Highlights:

- Our program provides an excellent mixture of clinical and research experiences with a total of 52 weeks of clinical and 92 weeks of research.
- Small program, outstanding exposure to wide varieties of pathologies.
- Tertiary center.
- Multidisciplinary patient care for several pulmonary specialties

Research support:

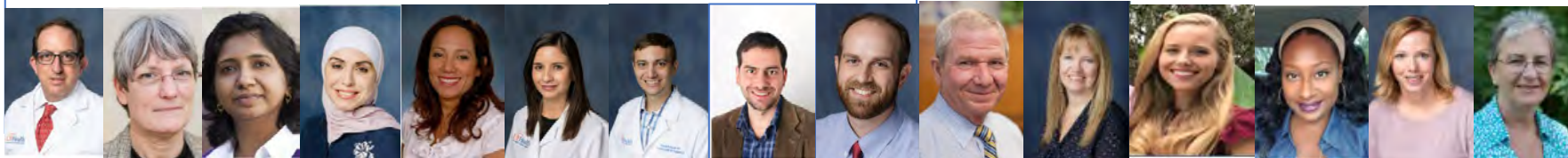
- Online course/certificate for basics of biostat.
- The CTSI Service Center provides a range of services and resources to investigators performing translational research across campus.

About Gainesville/Florida

- Gainesville is a university community located in North Central Florida midway between the Atlantic coast and the Gulf of Mexico.
- The climate encourages outdoor activities throughout the year
- Culturally, the city is enriched by the influence of the University.
- Gainesville was ranked #1 in the Top 10 College Towns.

Program Culture:

- Diversity, inclusion, equity
- Casual, cohesive, collaborative
- The University of Florida is a large, multicultural academic community.



University of Connecticut Pediatric Pulmonology Fellowship At Connecticut Children's



Our Team-Our Family

Program Director: Melanie Sue Collins, MD
Program Coordinator: Allison Williams



CT Children's is focused on providing outstanding, innovative patient care and remarkable, individualized educational opportunities for our fellows. We are also focused on diversity, equity and inclusion to empower all our team members to find success. In addition to institutional diversity activities, the fellowship and the division have a combined committee that provides didactics and team building activities and FUN!!!!

Our program culture is based on our dedication and commitment to developing the skills, knowledge and passion of our fellow. Our uniqueness comes in our ability to truly create an individualized experience for each fellow to develop their clinical and research interests.



Our entire team is deeply invested in your well-being, education and clinical development. We are always available to you. You will be given support and guidance through your studies, and will be able to truly work as a member of the team, fostering harmony and enthusiasm.

Our primary goal is to train Pediatric Pulmonary Fellows who are both academically and clinically competent while also achieving work/life balance. The fellowship program is thus focused on preparing the fellow for a well-rounded career in pediatric pulmonology focused on their own unique interests.

Double Click below to learn more about us
in **LIVING COLOR!**



Enjoy living in picturesque New England while being able to easily access two Boston and NYC. Furthermore, you have the benefit of being able to ski in the mountains, bike along the river and kayak in the ocean all in the same day!

Official pediatric teaching
hospital of

UConn
SCHOOL OF MEDICINE



Weill Cornell Medicine

Pediatrics

Pediatric Pulmonology

Program Director

Katharina Graw-Panzer, M.D.

Faculty

Stefan Worgall, M.D., Ph.D.

Andrea Heras, M.D.

Kalliope Tsirilakis, M.D.

Rashi Kochhar, M.D.

Ryan Kahanowitch, M.D.

Fellows:

Ioulia Gourari, PGY-6

Katiana Garagozlo, PGY-5

Zenna Solomon, PGY-4

Program Coordinator

Marija Vukotić

Program Specifics

Our goal is to provide fellows with a strong balance of **clinical training** and **research experience** to prepare trainees for an active career in academic medicine.

We offer clinical and research excellence and multidisciplinary collaboration in the management of:

- Asthma/Allergy, pulmonary function testing
- Aerodigestive diseases and bronchoscopy
- Bronchopulmonary dysplasia, chronic home ventilation
- Sleep disorders, craniofacial abnormalities
- Pulmonary complications of hematologic/oncologic processes/ rheumatologic conditions
- Rare lung disease (chILD)
- Comprehensive array of other pulmonary pathologies

Program Culture

Providing clinical and academic excellence while preserving work-life balance, hence ensuring wellbeing and career.

NewYork-Presbyterian

Komansky Children's Hospital

Komansky Children's Hospital

- 30 inpatient beds
- PICU: 20 beds + 3 neuro ICU beds
- NICU: Alexandra Cohen hospital for Women and Newborns - 60 beds
- Pediatric Sleep Center
- Bronchoscopy suite
- NYP Columbia: Cystic Fibrosis Center

Research opportunities:

- Drukier Institute for Children's Health
- Clinical Translational Science Center
- Department of Healthcare Policy and Research
- Hospital for Special Surgery
- Memorial Sloan Kettering Cancer Center
- Rockefeller Institute

Located in the Upper East Side of NYC

Affordable and available housing

Shuttle between NYP campuses

Community within Upper East Side



Pediatric Pulmonology Fellowship

Maria Fareri Children's Hospital at Westchester Medical Center



**Westchester
Medical Center**

Westchester Medical Center Health Network

- Maria Fareri Children's Hospital
- Only quaternary referral children's hospital in the lower Hudson Valley
- On campus of New York Medical College
- 4 Pediatric Pulmonary Fellows
- Collaborative Research: Basic science, clinical, translational, quality improvement, public health
- Opportunity to work towards Masters in Public Health during fellowship

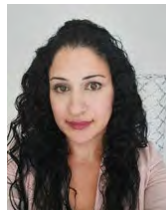
Program Culture:

- State-of-the-art care to children and their families coping with the most complex disorders
- First rate scholarly activity and research, including opportunities to participate in funded research
- Electives in Interventional Bronchoscopy, Allergy and Critical Care
- Strong didactics, teaching

Location:

- Beautiful wooded campus in Westchester County, NY
- 20 miles from New York City

- 18 Pediatric Pulmonologists, largest outpatient practice in NY state
- Accredited large Cystic Fibrosis Center
- Accredited Primary Ciliary Dyskinesia Center
- Allergy, Immunology, and Sleep Medicine
- Children's Environmental Health Center of the Hudson Valley
- Ventilator care program, severe asthma program, transition medicine program, rare disease program



Stacey Martiniano, MD, MSCS
Fellowship Program Director

Diana Saade, MA
Fellowship Coordinator

stacey.martiniano@childrenscolorado.org diana.saade@childrenscolorado.org

Our Mission and Aims:

- 1: To provide outstanding **clinical and procedural training** experience on pulmonary inpatient, outpatient, and consult services at CHCO and related training sites to deliver the highest quality, patient centered, safe, and comprehensive care for pediatric patients and families.
- 2: To provide exceptional opportunities for fellows in clinical, translational, basic, outcomes, quality improvement, or educational **research** to prepare for successful academic careers.
- 3: To establish a **career development** plan, including training and connection to leadership and advocacy opportunities, to guide fellows in establishing and reaching individual professional goals and objectives.
- 4: To teach trainees strategies to maintain **wellness** (of self and others), to build **resilience**, and to promote **diversity, equity and inclusion**.

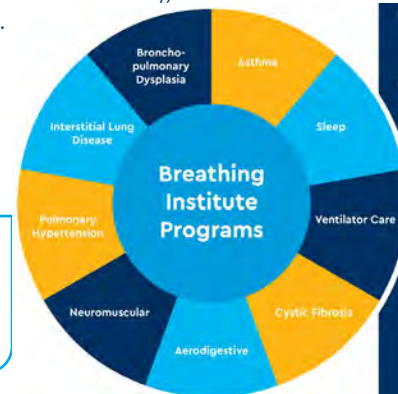


Fellowship Instagram:
[@coloradopedspulm](https://www.instagram.com/coloradopedspulm)



Fellowship Website:

<https://medschool.cuanschutz.edu/pediatrics/sections/pulmonary-sleep-medicine/fellowship>





Faculty

Paul Moore MD – Division Director – BPD

Andrew Sokolow MD – Program Director – Cystic Fibrosis, Muscular dystrophy

Eric Austin MD, MSCI – Pulmonary Hypertension

Mariana Bedoya MD – Sleep

Lana Boursouliau MD - Sleep

Rebekah Brown MD – Cystic Fibrosis

Mohammad Fazili MD, MBBS – Sleep, Aerodigestive

Jacob Kaslow MD – Technology dependence,
Muscular dystrophy

Michael O'Connor MD – PCD, BPD

Christian Rosas Salazar MD, MPH – Severe Asthma

Dennis Stokes MD, MPH

Caroline Thomas MD

Fellows

Shikha Saxena MD – 3rd year

Katherine Carr MD – 2nd year

Ferdinand Cacho MD – 1st year

Program Details

Training done completely at Monroe Carell Children's Hospital

- 343 Beds – and growing!
- >42 ICU beds
- 96 NICU Beds
- >400 Faculty

Specialized Pulmonary Clinics

- Aerodigestive
- BPD
- Cystic Fibrosis
- Duchenne MD
- Interstitial/Rare Lung Dz
- Primary Ciliary Dyskinesia
- Pulmonary Hypertension
- Severe Asthma
- Sleep
- Technology Dependence

Bronchoscopy Training

Trainees complete between 200-300 Flexible Bronchoscopies through training on average

Program Culture

Our training program focuses on the individual needs of each trainee. By taking one fellow per academic year our program fosters close interactions between trainees and faculty. Individualized training programs allows our graduates to experience all facets pediatric pulmonary medicine early and then with close mentorship, lay the foundations of a career trajectory while in training. Our graduates have a 100% board pass rate and 80% have successfully obtained training grants for their research.

Institutional Culture

- The entirety of the Vanderbilt Medical Center fosters a mantra of cooperation across divisions and specialties
- Trains over 900 residents/fellows annually

Nashville TN

Population – 1.6 Million with surrounding areas
Major industries : Tourism, Printing/publishing, Tech manufacturing, music, higher education, finance, insurance, automotive production, health care/management