

## Why Choose Us?

- US News #2 Children's Hospital
- State-of-the-art facilities in the heart of the Texas Medical Center
- Diverse Houston community
- Supportive peer and faculty mentors



## A Legacy of Excellence

- Trained over **100** post-graduate fellows who are practicing and conducting research across the globe!
- ACGME accredited since 1997
- Recruiting 3 fellows per year



# Pediatric Infectious Disease Fellowship



## The HIGHLIGHTS

Our mission: To train the next generation of leaders in pediatric infectious diseases

- Robust clinical training program
- Faculty with world-renowned ID expertise
- Opportunity to explore different career paths (Transplant ID, Antimicrobial Stewardship, Infection Control, etc!)



Twitter:  
BCMPedIDFellows  
Instagram:  
@bcmpedidfellows

<https://www.bcm.edu/departments/pediatrics/divisions-and-centers/infectious-diseases>



Where the world comes for answers



## Boston Children's Hospital Pediatric Infectious Diseases Fellowship Program

We seek to train leaders in academic infectious diseases with an emphasis on acquiring a breadth of clinical knowledge and research skills, while providing state of the art infectious diseases care to patients throughout our community and all over the world

### Program Features

- Fellows are fully-funded for duration of training
- Accept 3 fellows per year
- We welcome applications from candidates seeking combined med-peds ID training, dual subspecialty training, ABP research pathways, international medical graduates
- Extensive research opportunities and mentorship across Harvard institutions
- Opportunities for coursework and masters degree programs
- Pathways including Immunocompromised Hosts/Transplant ID, Antimicrobial Stewardship, Global Health, Patient Safety and Quality Improvement, Health Services Research, Clinical Microbiology

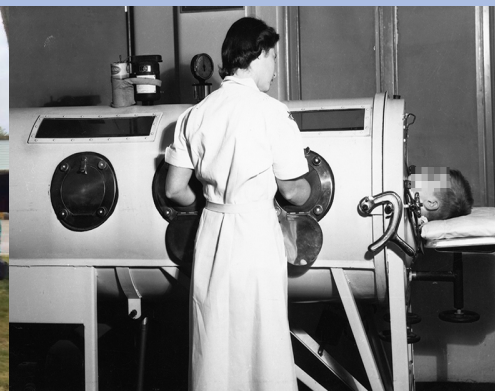
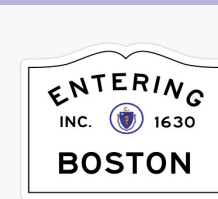


@BCHPedsID

Program Director: Tanvi Sharma, MD, MPH, FPIDS  
Tanvi.Sharma@childrens.harvard.edu

### Boston Children's Hospital

- Primary teaching hospital
- Approximately 500 beds
- 200+ specialized clinical programs and centers
- 40+ ACGME-accredited training programs, approximately 500 residents and fellows



### **Pediatric Infectious Diseases Faculty & Fellows**

Elizabeth D. Barnett, MD – Section Chief

Ellen R. Cooper, MD – Director of HIV/AIDS Clinics

Marisol Figueira, MD – Director, Fellowship Program

Stephen I. Pelton, MD - Attending Faculty

Vishakha Sabharwal, MD – Associate Director, Fellowship Program

Mine Duzgol, MD- Second Year Fellow

Ilan Rozen, MD- First Year Fellow

**Program Aims:** To provide organized and academically rigorous fellowship program which foster physicians' professional development as skilled, ethical, and compassionate clinician, sensitive and capable of meeting the challenges of a changing healthcare environment and assuring high-quality patient care. To promote research and scholarly activities relevant to the medical care of our patients and the educational needs of our trainees.

### **Program specifics**

All 3 years of fellowship are funded

Joint meetings with Adult ID

Microbiology, ASP, and infection prevention training

Additional training opportunities in clinical pharmacology

ethics, QI etc

Masters program opportunities with tuition support

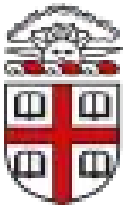
### **Research Highlights**

Exceptional research opportunities both within the department, global and school of public health

Scholarly activities, including QI, ASP, clinical, translational, animal modeling and bench research

CTSI and NIH T32-supported programs





# Brown Pediatric Infectious Diseases Fellowship

<https://brownpedsid.org/>

Our 3-year program provides a progressive educational experience preparing fellows to become pediatric infectious disease clinicians in a supportive, inclusive environment that features:

- One-on-one mentoring
- Flexible curriculum to meet fellows' areas of interest and career goals
- Core curriculum enabling fellows to acquire essential skills in scholarship, research methodology and teaching
- Variety of inpatient and outpatient clinical experiences including HIV and TB clinics
- Public Health elective at RI Department of Health



You're never far from the water in Rhode Island. A short ferry ride away, Block Island is a favorite day trip.

## Our Faculty:

**Penelope Dennehy**, MD, Program Director, Vice Chair for Academic Affairs

**Tanya Rogo**, MD, Associate Program Director, Global Health Educator, Co-lead of Antimicrobial Stewardship

**Sabina Holland**, MD, Associate Chair for Diversity in the Department of Pediatrics

**Michael C Koster**, MD, Division Director, Associate Medical Director of Infection Control and Hospital Epidemiology

**Silvia Chiang**, MD, Assistant Professor, Department of Pediatrics, Center for International Health Research of Rhode Island Hospital



2022 graduating fellow Katrina Byrd (center) celebrates with Pedi ID Faculty, Sabina Holland (left) and Tanya Rogo (right). Katrina begins work at the CDC in July.





## *Pediatric Infectious Diseases Fellowship*

### PROGRAM INFORMATION

- Program Director: Leila Posch
- Associate PD: Pia Pannaraj
- Coordinator: Jean Meadows
- Division Chief: Michael Neely
- Current Fellows:
  - Sanchi Malhotra
  - Joy Gibson
  - Dina Kamel
- Our Team:
  - 8 Pediatric ID Faculty
  - 2 NPs
  - 2 PharmD
- 1 Fellow/Year
- Guaranteed funding
- Contact:  
[lposch@chla.usc.edu](mailto:lposch@chla.usc.edu) or  
[jmeadows@chla.usc.edu](mailto:jmeadows@chla.usc.edu)



- Join our close-knit infectious diseases family
- No. 1 Children's Hospital in California, No. 1 in the Pacific Region, & Top 10 in the Nation for 14 years
- Strong GME Commitment to DEI
- Live in beautiful, sunny Los Angeles, a city known for its diversity & access to world-class restaurants, museums, beaches, mountains, & entertainment

### PROGRAM HIGHLIGHTS

- 2 Consult Services
- State-of-the-Art Clinical Training
- Committed Mentors
- Robust Microbiology, ASP, Infection Control, & Immunocompromised ID
- Conduct World-Class Research at CHLA or USC
- Opportunities at LA Public Health Dept & CHLA Global Health
- Earn a Master's Degree at USC
- Flexibility & Experiences Tailored to your Interests & Goals



# UPMC Children's Hospital of Pittsburgh



John Williams, MD (Chief)

Zac Aldewereld, MD (PICU/ID)

Brian Campfield, MD

Terry Dermody, MD

Megan Freeman, MD, PhD\*

Michael Green, MD

P. Ling Lin, MD

Anita McElroy, MD, PhD

Marian Michaels, MD

Andrew Nowalk, MD, PhD

- Inpatient /Outpatient
  - General Pediatric Infectious Dis
  - Immune compromised host (HSCT/SOT)
- Institution for Clinical Research & Education
- ASP and IP
- Pittsburgh Vaccine Trials Unit



CONTACT: Ling Lin – [linpl@chp.edu](mailto:linpl@chp.edu)





## Who we are

### Program Director:

Jennifer Schuster, MD

[jeschuster@cmh.edu](mailto:jeschuster@cmh.edu)

### Program Coordinator:

Sarah King, MS

[srking@cmh.edu](mailto:srking@cmh.edu)

### Our Team

- 11 Pediatric ID faculty
- 3 fellows
- 2 PharmD
- 5 APRN

Federally, foundation, and industry funded faculty who are leaders in the hospital and field of ID

## What to expect

- General and immune compromised ID consult services
- Microbiology, ASP, and infection prevention training
- Additional training opportunities in clinical pharmacology, ethics, QI, and masters programs with tuition support
- Scholarly activities, including QI, ASP, clinical, translational, and bench research
- Flexibility to choose your own schedule and scholarly activity that fit your goals

## Where we are

- Children's Mercy has 386 beds and covers a bi-state region
- Kansas City, the largest city in Missouri, is known for jazz, fountains, and barbecue
- A city with Midwest hospitality, 4 seasons, and sports champions
- More fountains than Rome and more boulevards than Paris, KC is the new Midwest!

<https://www.visitkc.com/>

# Children's National Hospital/George Washington University

## Pediatric Infectious Diseases Fellowship



<https://childrensnational.org/IDFellowship>

 @DCPedsID

 dcpedsid





# Columbia University/NewYork Presbyterian Pediatric Infectious Diseases Fellowship Program

## Program Faculty

**Division Chief:** Dr. Alice Prince

**Program Director:** Dr. Natalie Neu

**NIH T32 training grant Co-PIs:**

Drs. Alice Prince and Lisa Saiman

### **Other clinical faculty:**

Dr. Candace Johnson

Dr. Shivang Shah

Dr. Lawrence Stanberry

Dr. Jason Zucker

Jen Cheng, PharmD

### **Current fellows**

Dr. Irene Frantzis (PGY5)

Dr. Samiksha Tarun (PGY4)

## Program specifics

- ✓ U.S. News & World Report 2022 ranked #1 Children's hospital in New York.
- ✓ Multi-specialty, free standing children's hospital with wide variety of clinical experiences e.g. infections related to surgical procedures, transplants, travel, immune deficiency, neonatal infections and hospital or device related infections
- ✓ Direct involvement in Antimicrobial Stewardship and Infection Prevention and Control Programs
- ✓ Large pool of T32 mentors who represent multidisciplinary programs including nursing, dental, public health who serve to teach fellows and to accommodate fellow's research interests
- ✓ Ped ID curriculum coupled with Adult ID fellows and faculty leading to a diverse educational experience
  - ✓ Microbiology directly involved in educational experience with plate rounds, etc.
  - ✓ Children's hospital wide fellows educational program
  - ✓ School of Public Health masters programs available
  - ✓ Pediatric Diversity and Inclusion Council

## Program Culture

- ✓ Fellows direct their own research and clinical path leading to careers as clinician-scientists, directors of stewardship and fellowships, public health faculty including working at the CDC, and other are involved in the pharmaceutical industry.
- ✓ Central offices facilitate mentorship, collaboration in clinical work and research in a collegial atmosphere.

## Institution Culture

- ✓ Our Credo: RESPECT at NYP  
Every role counts; treat everyone as a valued human being

**NYP**Everyday  
**AMAZING**

## Geographic/Culture

- ✓ New York City is a diverse international city. You have many options of food, museums, parks and theaters to enjoy



# Duke University Pediatric Infectious Diseases Fellowship

<https://pediatrics.duke.edu/education/fellowship-programs/infectious-diseases>

- Program – the people:
  - 14 faculty (MD & PhD)
  - 6 fellows (2 positions/yr)
  - Staff: Admin, RN & NP ID specialists, ID/HIV Social Worker, ASP pharmacist, IP RN, etc
  - Faculty with diverse clinical interests & significant leadership roles within Duke
  - Faculty's research includes clinical, basic science, translational, educational & global health research
  - Division faculty are associated with many Duke Institutes, Centers & trials, including Duke Clinical Research Institute, Pediatric Trials Network, Duke Global Health Inst, Environmental Influences on Child Health Outcomes, ABC Science Collaborative, BRAVE Kids Study, Duke Human Vaccine Inst, Duke Ctr for HIV/AIDS Vaccine Immunology & Immunogen Discovery, Duke Ctr for AIDS Research, Duke Microbiome Center, and industry trials, among others
  - The Pediatric Infectious Diseases Division is dedicated to improving the health of children by promoting excellence in the prevention, diagnosis, and management of infectious diseases through clinical care, education, research, and advocacy
- Program specifics
  - 1<sup>st</sup> year: clinical training focus
    - 2 inpatient consult services (fellows alternate services): General ID & Transplant ID; diverse patient populations
    - Consults incl complicated common infections, unique presentations, & questions re: immunocompromised patients (BMT, SOT, incl routine plus multi-visceral & thymic Tx)
    - Microbiology lab rotation
    - Focused instruction in Antimicrobial Stewardship and Infection Prevention
  - 2<sup>nd</sup> & 3<sup>rd</sup> years: focused on scholarly activity
    - Breadth & depth of resources and mentors for research training
  - Option for advanced degrees (MPH, MSCR, MScGH, etc) *during* fellowship; combined ID/global health fellowship pathway available; advanced degrees routinely pursued by our fellows
  - Departmental Fellows Core Curriculum
  - Beautiful new facility – Duke Central Tower

**Institution Culture:** Duke University is a nationally-recognized academic medical center with superb clinical & laboratory resources, coupled with an invigorating intellectual environment. Multiple institutes & centers support patient care & research. Duke Pediatrics is ranked #1 nationally in NIH funding for Pediatric Departments. Diversity, equity & inclusion are key drivers of our excellence, accelerating our ability to innovate & solve problems.



**Program Culture:** our priority is to develop outstanding Pediatric ID specialists who will be future leaders in the field & also to train the next generation of physician-scientists. Our Program provides an excellent clinical & research training environment for fellows, who plan to pursue a clinical career in pediatric ID, research, or an academic position in antimicrobial stewardship, hospital epidemiology & infection prevention. We offer 3 major research tracks: Clinical, Basic Science & Global Health. *See website for details.*

**Geographic area:** Area was ranked #2 of top 10 places to live in USA in 2021; Vibrant place to live: Triangle with 3 universities, easy access to beach & mountains, & affordable places to live. Foodie town. DPAC, museums, college sports. Diverse population. Weather allows for participation in year round outdoor activities.



## Our Division

- Andi Shane  
Division Director
- **Andres Camacho-Gonzalez**  
**Program Director**
- LaTanya Alleyne  
Program Coordinator
- Fellows:
  - Elizabeth Quincer (3<sup>rd</sup> year)
  - Pratik Patel (2<sup>nd</sup> Year)
  - Hikari Yoshii (2<sup>nd</sup> Year)
  - Jairo Fonseca (1<sup>st</sup> Year)
  - Diane Saint Victor (1<sup>st</sup> Year)
- 25 Clinical and Research Faculty



## • Program specifics

- First year clinical, 2<sup>nd</sup> and 3<sup>rd</sup> year 90% protected for research
- 3 campuses
  - Egleston: main campus primary site)
  - Scottish Rite
  - Hughes Spalding
- Largest HIV Clinic in the Country
- Strong ties with CDC (down the road from Egleston Campus)
- Large solid organ and bone marrow transplant units
- Strong antibiotic and diagnostic stewardship teams
- One of the only pediatric hospitals with high consequence pathogen unit
- Secure salary for the three years of fellowship
- T32s in vaccinology, HIV
- Possibility of doing Master in Clinical Research (funded)
- Strong Clinical trials units: Vaccine trial unit and HIV clinical trial unit

## Program Culture

- Academic excellence
- Culture of discovery and innovation
- Collaborative work
- Committed to educate the next generation of clinicians and researchers

## Institution Culture

- Academic Excellence
- Climate of diversity and inclusion

## Atlanta

- Why Atlanta?: Community and Vibrant neighborhoods, lots of city parks and great outdoors, affordable, great food and dining scene

## Population we serve

- 54% African-American
- 10% Hispanic
- Egleston and SR: 60% Medicaid, 10% uninsured
- Hughes Spalding: >90% Medicaid
- Large refugee settlement population
- Third largest LGBTQ community in the US



DEPARTMENT OF PEDIATRICS  
**PEDIATRIC INFECTIOUS DISEASES AND GLOBAL HEALTH FELLOWSHIP**



**Program Highlights:**

- Clinical experience is exceptional, with a **primary** service, a **general consult** service, and a **immunocompromised consult** service, providing care in inpatient and outpatient settings
- Fellows have a wide variety of research opportunities with nationally recognized researchers in clinical, translational and basic science research ranging from **malaria and HIV** to **novel diagnostics**
- Further research mentorship is provided through the **Morris Green Physician Scientist Development Program** and **T32 research** training grants
- The **IU Center for Global Health** offers fellows research opportunities with partnerships in Kenya, Honduras, Mexico, Botswana, Thailand and other underserved areas

**About us:**

- Large division with **12 faculty members, 2 full time pharmacists and 1 fellow spot / year**
- **Riley Hospital for Children** is a 354- bed **free- standing children's hospital** with the support of the nearby adult center owned by IU Health
- Indianapolis is a mid-size city with shopping, restaurants and culture, with a **low cost of living** and easy access to air travel
- Fellowship Director: **Alka Khaitan, MD** ([akhaita@iu.edu](mailto:akhaita@iu.edu))





# ISMMS Mount Sinai Hospital, New York, NY

Kravis Children's  
Hospital



## Core Faculty

- Michael Tosi (Division Chief)
- Roberto Posada (PD)
- Shanna Kowalsky
- Alberto Paniz-Mondolfi
- Melissa Gitman

## Current Fellows

- Mary Boyle
- Annie Contreras
- Priya Mallikarjuna

## Pharmacists

- Eleanor Sadler, Polina Lerner, Victoria Adams

## Infection Prevention Nurse

- Leah Shayer

- Tertiary center, all subspecialties represented
- Consults include traditional community acquired infections and unusual/opportunistic infections
- Solid organ transplant, oncology, primary immunodeficiency
- Large NICU, PICU and separate PCICU
- Close working relationship with Global Health and Basic Science Microbiology Departments, Clinical Micro Lab, MPH program, Adult ID division
- Close knit, supportive group
- Relaxed, friendly work environment
- The Mount Sinai Health System values high quality care, education and research, and diversity and inclusion
- Located in between the Upper East Side and East Harlem neighborhoods of Manhattan, on "Museum Mile", across the street from Central Park, and close to public transportation



Our program offers a fully funded 3-year position with emphasis on evidence-based clinical care and high-quality research in a collaborative division.

- Program specifics
  - 1+ ID fellow/year
  - 5 ID Advanced Practitioners
  - 4 ID Nurses
  - 8 ID Administrators
  - 18 ID Faculty
  - Training in transplant ID, infection prevent & control, clinical microbiology, antimicrobial stewardship, and HIV mother/baby
  - Research opportunities across Lurie & Northwestern University
  - Joint meetings with Adult ID

- Hospital specifics
  - 43 fellowship programs
  - 360 beds
  - Level 1 trauma, PICU, CICU, two level 3 NICUs







**MAYO CLINIC**  
Rochester, MN

## FACULTY and FELLOWS



**Elizabeth Ristagno, MD, MSc**  
Program Director

@ERistagno



**Melissa Henry**  
Program Coordinator

- Charlie Huskins, MD, MSc
- Nipunie Rajapakse, MD, MPH
- Rana Chakraborty, MD, DPhil
- Theresa Madigan, MD
- Emily Levy, MD
- James Gaensbauer, MD, MS
- Laura Dinnes, PharmD, RPh
- Grace Lee, PharmD
- Lisa Hiskey, DO (2020-2023)
- Chris Reis, MD (2022-2025)

## PROGRAM HIGHLIGHTS

- Small-sized program to foster close connections with colleagues with the resources of a large academic center to promote your professional development
- Faculty dedication to teaching and mentoring
- World renowned clinical microbiology laboratory, with opportunity for clinical microbiology fellowship
- Rotations include microbiology, immunology, infection control-antimicrobial stewardship-public health, in addition to clinical rotations in inpatient, clinic, and transplant
- Additional training in HIV and TB
- Generous conference travel policy
- Close collaboration with adult infectious diseases of over 30 faculty and 12 fellows
- Ability to tap into endless opportunities and resources of the Mayo Clinic

### PROGRAM CULTURE

- Flexible
- Customizable
- Supportive



### INSTITUTION CULTURE

- #1 hospital in the nation
- "The needs of the patient comes first"
- Collaborative



### GEOGRAPHIC AREA

- Comfortable and affordable city
- No traffic
- Excellent schools
- 4 seasons with a pleasant summer!
- Orchards, hiking, lakes, Mall of America



2 fellows/yr, including combined fellowships; 4<sup>th</sup> year Host Defense/Transplant ID fellowship; 20 peds ID, 3 microbiology, & 14 research faculty



26 bed inpatient ID unit, General ID & Host Defense/Transplant ID consult services



570-bed freestanding pediatric hospital, 3 PICU, 3 NICU, burn, and special pathogens units



Abigail Wexner Research Institute, 12 Centers of Emphasis; ranked top 10 for NIH funded children's hospitals



ASP, Epi/Infection Prevention, QI, Global Health programs; General ID, Host Defense/TID, TB, Neo ID, HIV, Hepatitis C, Kawasaki, COVID-19 clinics



Academic Teaching Hospital for The Ohio State University College of Medicine



VISION

**BEST OUTCOMES**

*for Kids Everywhere*



where  
**PASSION**  
meets **PURPOSE**

GOAL

Pre-eminent Clinical & Research Programs



*Through best people & programs*

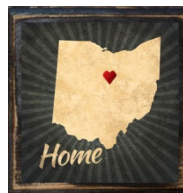


**Come join our team!**

**LEARN MORE:**

[NCH Tour](#)

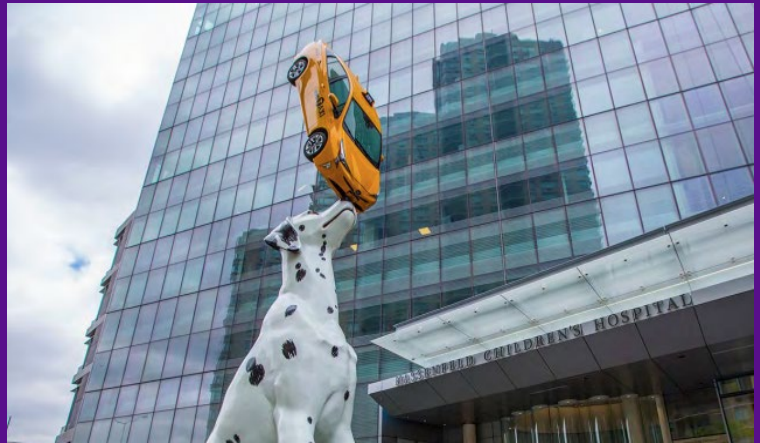
[Columbus](#)







HASSENFELD  
**CHILDREN'S  
HOSPITAL**  
AT NYU LANGONE



## ***NYU Pediatric Infectious Diseases Fellowship Program: Serving the children of NYC at NYU and Bellevue Hospitals***

**Emerging infections and outbreak response**  
**Transplant infectious diseases**  
**Antimicrobial stewardship**  
**Hospital epidemiology**  
**HIV treatment and prevention**  
**Combined adult-pediatric training opportunities**  
**Bench, clinical, and translational research programs**

*Program director: [Rebecca.pellettmadan@nyulangone.org](mailto:Rebecca.pellettmadan@nyulangone.org)*

# University of Washington / Seattle Children's Peds ID Program



- 5-state region
- 2 fellows / year
- Exceptional research opportunities
- NIH T32-supported
- >100 program grads
- MPH/MS opportunity
- >85% grads stay in academics
- Equity a core value
- Transplant ID



Check out our website!



Seattle Children's®  
HOSPITAL • RESEARCH • FOUNDATION



**Stanford**  
MEDICINE

Division of Infectious Diseases  
*In the Department of Pediatrics*

- Broad clinical exposure to infectious diseases in otherwise healthy and immunocompromised children, transplant ID, IPC, ASP, global health, diagnostic microbiology lab techniques
- Scholarly and research opportunities in transplant ID, diagnostics, global health, Med Ed and more
- Mentored grant funding – Stanford's MCHRI, TTE, NIH
- Department of Pediatrics Learning Community - Fellows' College, Scholarship Academy, Grant Writing Club, Fellows' Council, DEIJ seminars and more
- Located in the Bay Area – Great weather year-round perfect for outdoor recreation. Driving distance to Napa, Lake Tahoe, Yosemite, Santa Cruz, Monterey, and San Francisco
- Compensation & Benefits - Highly competitive pay; medical/dental/vision insurance; education, cell phone, and housing stipends; moving stipend; DEA and medical license reimbursements



Program Director: Sruti Nadimpalli, MD, MPH

Associate Program Director: Ayelet Rosenthal, MD, MSc

Program Coordinator: Kim Vo, BS, C-TAGME

Email: [lpch\\_id\\_fellowship@stanford.edu](mailto:lpch_id_fellowship@stanford.edu)

Website: <https://med.stanford.edu/pedsid/education>



**Stanford**  
MEDICINE



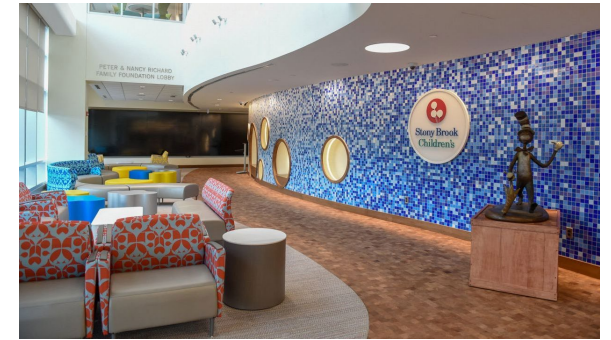


## Wonderful Faculty members & staff!

- Sharon Nachman, MD
  - Division Chief
  - Professor
  - Chair IMPAACT Network
- Christy Beneri, DO
  - Fellowship Program Director
  - Associate Professor
- Andrew Handel, MD
  - Assistant Professor
- Dalia Eid, MD
  - New faculty (September)
  - Assistant Professor
- Orietta Miceli-Ortiz
  - Fellowship Program Coordinator
- Barsha Chakraborty
  - Study Coordinator
- Erin Infanzon
  - Administrator/Regulatory Coordinator
- Melissa Shikora
  - Social Worker/Medical Case Manager

## Excellent clinical and research experience!

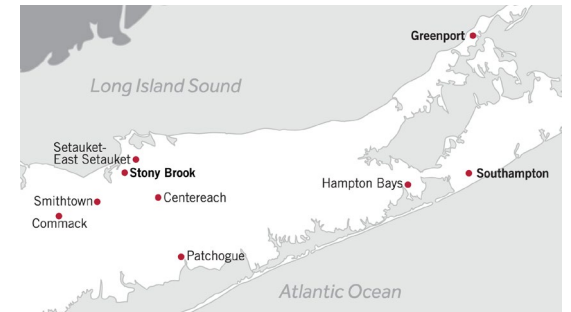
- COVID clinical trials site
  - Vaccine (Pfizer, Moderna and Novavax)
  - Therapeutics
- Center for Lyme and Tick-Borne Diseases
- Global Health Rotation to South Africa
- Renal Transplant Center
  - Participation in National Studies
- Infection Control Committee and Antimicrobial Stewardship Programs
- Maternal-Child HIV Center
- IMPAACT Network Clinical Trials Site



**Only tertiary children's hospital in the region!**



**Committed to trainees education and well being!**



**Located on Long Island known for beautiful beaches, farms, short trip to NYC & great schools!**

# Pediatric Infectious Disease Fellowship Program

## SUNY Downstate Health Sciences University, Brooklyn, NY

### Faculty

Stephan Kohlhoff, MD, Division Dir.

Margaret R Hammerschlag, MD,  
Program Dir.

Swati Kumar, MBBS, PhD

Matthew Gesner, MD

Tamar Smith-Norowitz, PhD

Anna Plourde, PhD, Dir. Clinical  
Microbiology

Susannah Franco, PharmD

### Fellows

Haram Abdelmajid, MBBS, MPH

Wefag Ahmed, MBBS

### Coordinator

Deborah Pointer, MEd

- **Program specifics:**

- We are an ACGME accredited 3-yr Pediatric ID fellowship program
- The division has 3 laboratories offering opportunities for bench research: Chlamydia Research Laboratory; Immunology research under Dr. Norowitz; COVID 19, HIV research under Dr. Kumar.
- Areas of clinical research include perinatal HIV infection, sexually transmitted infections in high-risk adolescents, role of infection, specifically *C. pneumoniae*, in asthma, impact of COVID 19 on pediatric care.
- The Division has a very productive record of publication, with participation of fellows.
- The Downstate School of Public Health offers fellows the opportunity of obtaining an MPH during their fellowship.

**Program Culture:** We are a small program that offers personal attention to our fellows. The program director has an open door policy.

**Institution Culture:** SUNY Downstate is committed to diversity and inclusivity

**Geographic area/Culture:** SUNY Downstate is located in central Brooklyn, serving one of the most diverse communities in New York City. Local cultural institutions include the Brooklyn Academy of Music, Brooklyn Museum, Barclay Center, galleries, theaters





# Tulane University Pediatric Infectious Disease Fellowship



- Clinical Experience based at the Children's Hospital New Orleans (CHNOLA)
  - Louisiana's only free-standing children's hospital
  - Robust Antibiotic Stewardship and Infection Prevention Programs
  - U.S. News and World Report Top 50 Pediatric Hosp.
- Scholarly Activity
  - Diverse research opportunities in basic science, clinical research, global health, hospital epi
  - Opportunities at Schools of Medicine, Public Health and National Primate Research center

Our goal is to train the next generation of pediatric infectious disease experts. Through one-on-one mentorship, our fellows become proficient in complex patient care and the design and conduct of hypothesis-driven research.

The mission of Tulane University is to provide medical education of the highest quality in an inclusive and supportive environment.



Considered the most interesting city in America, New Orleans has a vibrant culture with great food, amazing music and unforgettable festivals like Mardi Gras and Jazz Fest.

John S. Schieffelin, MD  
Program Director  
[jschieff@tulane.edu](mailto:jschieff@tulane.edu)

# UCSD PEDIATRIC ID FELLOWSHIP

## World Class Clinical Training

- Unparalleled diversity in pathophysiology
- Diverse patient population
- Only Pediatrics in large catchment area
  - Largest Children's Hospital in California
  - 3<sup>rd</sup> largest Children's Hospital in the US
  - Busiest international border in the world
- Customizable and flexible clinical schedule
  - Tailored to meet fellow's career interests
- General ID, Immunocompromised ID and Outpatient ID services
- Unique clinical elective experiences:
  - Local International Rotations, Travel Medicine, HIV, Vaccines, Public Health, Global Health, STIs, TB, Refugee Intake, Infection Control, Antimicrobial Stewardship, Microbiology, Immunology, Periodic Fever, KD, MIS-C, etc.
- Outstanding Clinical Teaching/Mentorship

## Welcome to the UCSD Peds ID Training Program!

Our program offers broad exposure to both common and rare pediatric infections, with an emphasis on bedside and clinical teaching, career and personal development, and opportunities to pursue learning through research or other academic endeavors. Our goal is to train future leaders in the field. We provide a strong foundation in Pediatric Infectious Diseases as well as training for an academic career. UCSD draws physicians of diverse backgrounds from all over the country and world. Our fellows are intellectually curious, passionate, dedicated to their work, supportive and adventure seeking. The fellowship program allows flexibility for tailored training experiences based on the specific interests of the fellow.

Congratulations on choosing to join the Pediatric Infectious Diseases community! We are excited to have you here at UCSD and Rady Children's Hospital and hope you enjoy your time with us. Cheers.

## World Class Research

- Vast and varied academic opportunities
- Customized to match fellow's career path
- Guaranteed funding for any fellow research
- UCSD Pediatrics ranks #6 in NIH funding
  - Pediatric Infectious Diseases #1 in Department
- Major expertise in cutting-edge ID:
  - Including: Bacterial Pathogenesis, HIV, Genomics, Clinical Research, Microbiome, Pharmacology/Drug Discovery, etc.
- Collaborations with local famed institutions:
  - TSRI, Salk Institute, JCVI, LJI, SBP Discovery, UCSD CTRI, UCSD/RCHSD Institutes of Genomic Medicine, > 500 Biotechnology Companies, etc.
- Individualized tracks and mentorship:
  - Physician Scientist, Clinical Research, Clinician Educator, Public/Global Health, IC/AMS, Immunocompromised ID, other ID career paths
- Develop skillset to meet fellow's career goals

## For more information:

- Website: <https://medschool.ucsd.edu/som/pediatrics/Divisions/infectious-diseases/Fellowship/>
- Fellowship Director: Chris Cannavino [ccannavino@health.ucsd.edu](mailto:ccannavino@health.ucsd.edu)





# UCSF Benioff Children's Hospital San Francisco / Oakland

## Faculty

- Division Head
  - Theodore Ruel MD
- 12 Clinical Faculty
- 7 Research Faculty
- Two fellowship positions per year
- Current Fellows
  - Ryo Miyakawa, MD
  - Victoria Chu, MD
  - Pamela Gangar, MD

## Program

- **Two free standing children's hospitals** offering wide diversity in training in both general and pediatric infectious disease and immunocompromised populations
- Outpatient clinics including **HIV, TB, and STI**
- **Individualized tracks** to focus in training in ASP, ICH, Med Ed, Research
- Access to research mentors across all of UCSF
- **Top public recipient of NIH Grants**

## Program Culture

- Promote trainee wellness, and tailored training to support individual career aspirations

## Institution Culture

- Equity, racial justice, and inclusion
- Cutting edge Research
- Community involvement in research and clinical programming

## Geographic area/Culture

- The Bay Area is incredibly diverse!
- Some of the top restaurants in the US!
- Amazing outdoor recreation both in and around the Bay Area





# UH Rainbow Babies and Children's Hospital in Cleveland, Ohio

- ***The Science of Health. The Art of Compassion.***

- We have a division of **9 full time faculty** members with variety of research interests in global health, HIV, malaria, infection control, antimicrobial stewardship, as well as robust clinical trials participation
- We have a full time pediatric antimicrobial stewardship pharmacist who participates on ID rounds and also strong collaboration with microbiology lab with daily micro rounds
- We have three current fellows and we take one fellow per year through the match
- We also have solid relationship with our adult infectious diseases division for combined med/peds fellowship training and also research mentorship.

## Program Specifics:

- First year of fellowship is primarily clinical with about 6 months of inpatient service with 4 week microbiology elective, outpatient clinic, and research time.
- Years 2-3 have more dedicated time for scholarly work, with weekly ID or HIV outpatient clinic, as well as completion of other electives including infection control, transplant, antimicrobial stewardship, travel medicine, and ambulatory electives.
- We encourage participation in robust scholarly project completion, with guidance starting in first year to find mentor in your area of academic interest for longitudinal relationship leading to completion of work product.

## Program/Institution Culture:

### To Heal. To Teach. To Discover.

We believe in the importance of balance between clinical care, research, education, as well as wellness of mind and body.



# University of Alabama at Birmingham



Children's  
of Alabama

- Richard Whitley, Division Co-Director
- David Kimberlin, Division Co-Director
- Scott James, Program Director
- Claudette Poole, Associate Program Director
- Suresh Boppana
- Shannon Ross
- Bill Britt
- Celia Hutto
- Swetha Pinninti
- Nour Hasan, Transplant ID
- Cathy Serpin, Nurse Clinician
- April Yarbrough & Hucks Buchanan, Peds ID Pharm D
- Current Fellows: Audrey Lloyd (Adult/Peds ID), Josh Cooper (PICU/Peds ID), Ayesha Ahmed, Markus Buchfellner, Lindsey Hastings (Adult/Peds ID)
- Program Coordinator: Tracy Downey  
([tdowney@uabmc.edu](mailto:tdowney@uabmc.edu))

- Faculty are world leaders in studies of congenital and perinatal viral infections
- Broad research opportunities: basic, translational, clinical, epi & prevention, outcomes, ASP, Transplant ID, STI, etc...
- Gain expertise in a wide variety of clinical conditions and settings
- Our program is flexible, tailored to suit each trainee's interests and career goals
- Strong track record of job placement in top clinical, research, and public health programs throughout the country

## **Program Culture:**

Faculty are dedicated and supportive, fellows are valued colleagues; we strive for academic excellence within a family atmosphere.

## **Institutional Culture:**

UAB SOM & DOP are diverse and highly supportive of our fellows. Research, career development, and wellness resources are plentiful.

## **Geographic Area/Culture:**

Amazing food and music scenes, great museums and cultural activities, outdoor activities galore, excellent schools.





# UNIVERSITY AT BUFFALO PEDIATRIC INFECTIOUS DISEASES



Make an impact caring for complex, critically ill children of all ages and sizes at the University at Buffalo.

Become a member of the next generation of academic physicians who perform innovative research, provide outstanding patient care and train future leaders in the field.



State-of-the-art facilities at our NIH supported Clinical and Translational Research Center and a new standalone children's hospital highlight our Pediatric ID program.

## Highlighted Fellow Publications (2000-2022):

**Guideline Adherence and Antibiotic Utilization by Community Pediatricians, Private Urgent Care Centers, and a Pediatric Emergency Department**

Clinical Pediatrics  
2020, Vol. 99(1) 21-30  
© The Author(s) 2019  
Article reuse guidelines:  
sagepub.com/journalsPermissions  
DOI: 10.1177/009921811979462  
jcp.sagepub.com/home/jcp  
SAGE

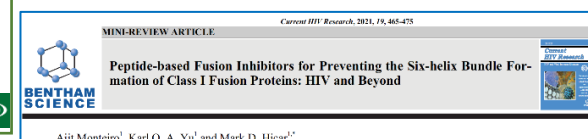
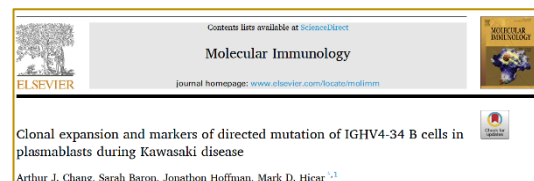
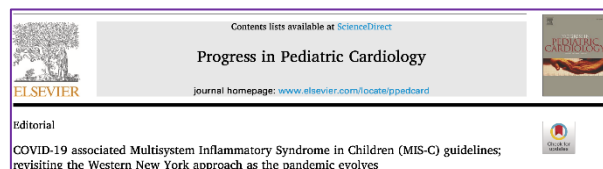
Shamim Islam, MD, DTM&H<sup>1</sup>, Mary Kathryn Mannix, DO<sup>1</sup>,  
Ryan K. Breuer, MD<sup>2,3</sup>, and Amanda B. Hassinger, MD, MS<sup>2,3</sup>

**JPPT | Brief Practice Report**  
**Accuracy of Antibiotic Prescription Dosing for Urinary Tract Infections in a Regional Pediatric Ambulatory Care Setting**

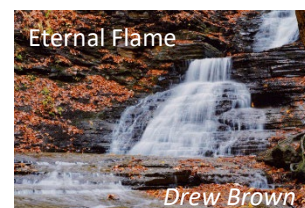
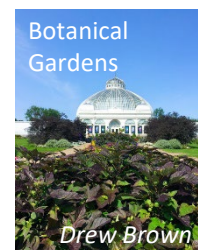
Mary Kathryn Mannix, DO, Emily Polischuk, PharmD, and Shamim Islam, MD, DTM&H

**SERUM RESPONSES OF CHILDREN WITH KAWASAKI DISEASE AGAINST SEVERE ACUTE RESPIRATORY SYNDROME CORONAVIRUS 2 PROTEINS**

Arthur J. Chang, MD, Michael Croix, MD,  
Patrick Kenney, MD, Sarah Baron, BS,  
and Mark D. Hicar, MD, PhD



*Live, Learn and Play  
in Western New York*



## Core Faculty

Program Director:

Mark D. Hicar, MD, PhD  
[markhica@buffalo.edu](mailto:markhica@buffalo.edu)

Oscar G. Gomez, MD, PhD  
Division Chief  
Pediatric Infectious Disease

Shamim Islam, MD, DTM&H  
Clinical Associate Professor  
Pediatric Infectious Disease

Karl O. Yu, MD, PhD  
Clinical Assistant Professor  
Pediatric Infectious Disease

Program Administrator:

Jordan Koper, MA  
[jkoper@upa.chob.edu](mailto:jkoper@upa.chob.edu)  
716-323-0027



## Faculty



Nizar Maraqa



Ana Alvarez



Mobeen Rathore



Ayesha Mirza

## Fellows:

Fadi Shahoud /F3

Fletcher Osborne /F2

Melanie Vega /F1



**Coordinator:** Ashley Volz

**Fellowship email:**

[PedsIDFellowship@jax.ufl.edu](mailto:PedsIDFellowship@jax.ufl.edu)

- Fellow-focused flexibility
- Balanced inpatient & outpatient ID
  - Bread & Butter ID
  - Tertiary Care ID
  - ASP (Stewardship)
  - Infection Control
  - Clinical Microbiology
  - QI Curriculum
  - International Elective
- HIV Medical Home training experience
- Clinical Outcomes Scholarly Opportunities

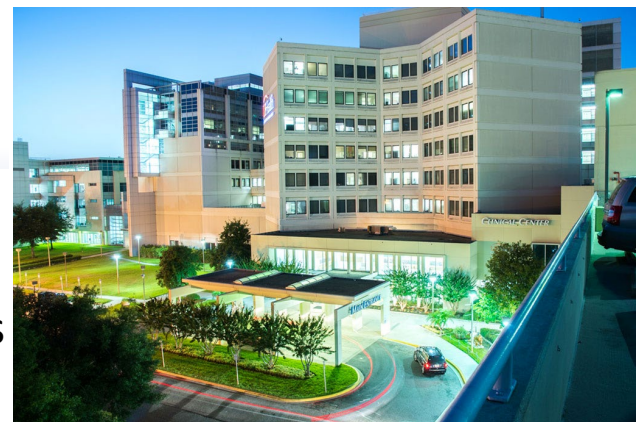


**Wolfson Children's**

Rewarding / Relaxed  
#1 Destination



Academic Institution  
Diverse Culture  
Collaborative Partners  
UF Family / Perks



**JAX: Florida's 1<sup>st</sup> Coast**





## Program Overview

- A continuously accredited program with secure funding and history of successful graduates since 1994
- One fellow is trained every 3 years, allowing for intensive, focused mentorship
- Teaching medical students and residents is an integral part of the training
- Opportunity to obtain Masters Degree
- Dynamic, interactive (and fun) conferences, including a weekly case conference, research meetings, board review, multidisciplinary immunodeficiency conference, and journal clubs
- Rotations in pharmacy/ASP, infection prevention, public health, and clinical laboratories
- Departmental Pediatrics Fellows Conference series
- Social activities for all fellows in the Department



Seven physicians and one nurse practitioner with >100 years of collective experience in the field

- Faculty who occupy leadership roles at local, regional, and national levels
- Nationally recognized antimicrobial stewardship, infection prevention, and vaccine clinical research programs
- Dedicated infectious diseases pharmacist

**Scan to learn more  
about Peds ID at UofL:**

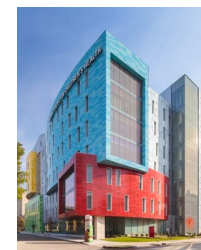


### Inpatient

- Free-standing, 300-bed full-service children's hospital with diverse patient population and over a century of history and tradition
- General infectious diseases and separate transplant/immuno-compromised service
- 600 new consults/yr

### Outpatient

- Unique among PID programs with sessions every day & broad range of clinical issues
- New, state-of-the-art multispecialty facility
- 1800 encounters/yr



## Program Culture



**2020 Division  
Halloween Costume**

Our division's traditions: academic dialogue, democratic decision-making, health equity and inclusion, critical self-assessment, process improvement, forward vision, and investment in faculty, trainees, and staff. And we're like a family!

While we can offer experience in laboratory-based research for those who are interested, we tend to focus on providing fellows with the knowledge and skills they will need to succeed in clinical positions in the real world of academic medical centers.

## Institutional Culture

Almost all faculty in the Department of Pediatrics are clinician-educators. Many have robust clinical research programs and are well-recognized in their fields. There is an excellent residency training program and there are fellowships in most subspecialties. The academic milieu is open-minded and accommodating—teachers, scholars, clinicians, and NIH-funded investigators are equally valued and supported. This is a comfortable place to work.



**Scan to learn more about being a  
Pediatric Fellow at UofL**

## Louisville, KY



Source: gotolouisville.com

Situated at the crossroads of the South, North and Mid-west, Louisville is a medium-sized city with a unique history and culture, affordable cost-of-living, and friendly people. You are as close here to the country as you are to big-city happenings.

**The spirit of the city:** The Kentucky Derby; Heart of the Bourbon Trail; Louisville Slugger baseball bats; the Muhammed Ali Center; deep musical roots and the Forecastle Festival; college basketball; nationally-accredited Olmstead-designed park system; progressive vision, diversity, and inclusion. And, of course, vibrant dining scene that includes farm-to-table restaurants, award-winning chefs and eclectic food trucks.



# PEDIATRIC INFECTIOUS DISEASES FELLOWSHIP PROGRAM

CVD·GLOBAL HEALTH



Dr. Karen Kotloff,  
Division Head

- Outstanding clinical training and research opportunities
- Clinical training: Maryland Hospital for Children, part of the University of Maryland Medical Center (UMMC)
- Research activities focus on vaccine development, clinical trials, and global health
- Part of the Center for Vaccine Development and Global Health (CVD), recognized internationally for domestic and international vaccine development
  - For example: basic science vaccinology research, epidemiology and burden of disease, immunology, post-licensure studies
- Rich, international training environment with research support for fellows available through an NIH T32 Training Grant in Vaccinology.
- Trainees are mentored by teams of leaders in their respective fields.
- Trainees attain high-level positions in academics, government, industry, international organizations



Dr. Matthew Laurens,  
Program Director



Dr. Andrea Berry



Dr. Lauren Cohee



Dr. James Campbell



Dr. DeAnna Friedman-Klabanoff



Dr. Miriam Laufer



Dr. Milagritos Tapia



Dr. Mark Travassos



Dr. Elizabeth Hammershaimb

# University of Nebraska Medical Center Pediatric ID Fellowship



Omaha, Nebraska



- Program Director: Andrea Green Hines, MD [adgreen@unmc.edu](mailto:adgreen@unmc.edu)
- Fellow (Med-Peds ID): Clayton Mowrer, DO
- Internationally recognized faculty who are **approachable**, **engaged** in fellow education and have **diverse interests** in ID including global health, public health, hospital epidemiology, antimicrobial and diagnostic stewardship, medical education, bench research and biopreparedness.
- **Robust** and **broad inpatient ID consultation experience** caring for patients at tertiary referral centers.

<https://www.youtube.com/embed/ZmzJjwpdGCQ?autoplay=1&rel=0>

<https://www.unmc.edu/pediatrics/divisions/id/fellowship/index.html>



# University of Tennessee HSC – St. Jude Children’s Research Hospital

Program director: Elisabeth Adderson  
(Elisabeth.Adderson@stjude.org)

Le Bonheur site director: Timothy Minniear (tminniea@uthsc.edu)

Program coordinator: Trachia Wilson  
(Trachia.Wilson@stjude.org)

We are 27 full time faculty who practice in 2 free-standing children’s hospitals

We are regional, national and international referral centers

We provide comprehensive clinical training, scholarly tracks in clinical, translational and basic sciences, and the opportunity to obtain advanced degrees in related sciences

In addition to a robust traditional pediatric infectious disease program, we are national leaders in the care of immunocompromised patients and offer dedicated training in antimicrobial stewardship, infection prevention, global pediatrics, transplant infectious diseases, and HIV medicine

We are committed to ensuring your fellowship is a fulfilling experience that prepares you for the next step in your career. Our strong, multidisciplinary and translational research culture integrates clinical care, research and education at every level.

Dynamic, diverse, and rich in the arts, Memphis also has great year-round outdoor recreation, a thriving food scene, terrific sports, family-friendly activities, an entrepreneurial spirit, and so much more — with an affordable cost of living that makes it easy to do what you enjoy.





Faculty:



Anthony R. Flores, MD, MPH, PhD  
Associate Professor of Pediatrics, Infectious Diseases, Division Chief



Norma Perez, MD  
Associate Professor of Pediatrics, Director Fellowship Program



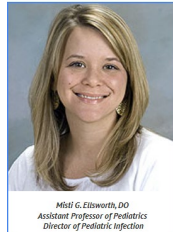
Gloria P. Heresi, MD  
Professor of Pediatrics, Co-Director, Fellowship Program



James R. Murphy, PhD  
Professor of Pediatrics, Director, Research



Susan H. Whittle, MD  
Associate Professor of Pediatrics



Misti G. Ellsworth, DO  
Assistant Professor of Pediatrics, Director of Pediatric Infection



Michael L. Chung, MD  
Assistant Professor of Pediatrics, Director of Pediatric Antimicrobial Stewardship



Roshay Al-Hamoud, MD  
Assistant Professor of Pediatrics



Ramia Zakhour, MD  
Assistant Professor, Pediatric ID Immunocompromised



Carol J. Baker, MD  
Professor of Pediatrics

Fellows:



Sebastian Shrager  
Yr-1



Maria Segura  
Yr-2



Andrea Carla-Angléro  
Yr-2

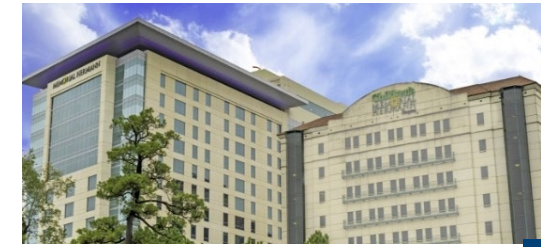


Christy Tabarani  
Yr-3

Coordinator: Kim Maxcey Email: [Kimberlie.I.Maxcey@uth.tmc.edu](mailto:Kimberlie.I.Maxcey@uth.tmc.edu)

- **Texas Medical Center** – largest in the world
- **Diverse clinical experience**
  - Inpatient and outpatient
  - Level 1 trauma/tertiary ID cases
  - Immunocompromised/Transplant
  - Infection control
  - ASP (Stewardship)
  - Infection Control
  - Clinical microbiology
  - Tropical Medicine
  - Pediatric HIV medical home

- **Strong didactics** including TMC consortium collaborations for lectures/conferences
- **Diverse Research Opportunities**
  - Basic/clinical/translational research
  - T32 research opportunity



Geographic area/Culture

Most diverse city in the USA!

- 19 Museums
- All sporting events
- Delicious ethnic/diverse restaurants
- Arts/Music/Opera/Concerts
- Affordable housing and low cost of living
- Near gulf and beaches
- Great place to raise families





# The Pediatric Infectious Diseases Fellowship Training Program at The University of Texas Southwestern Medical Center and Children's Medical Center

## Children's Medical Center

- 7<sup>th</sup> largest children's hospital in the country
  - Free standing children's hospital
- PICU, CICU, Neuro ICU, NICU
- Large Oncology service including bone marrow and stem cell transplantation services
- Among the leaders in pediatric heart, liver, kidney transplantations
- 50+ Pediatric specialties and sub-specialties
- Only Pediatric HIV clinical service in north Texas
- Partner institutions (NICU)
  - Parkland (largest number of deliveries in the country)
  - Clements University Hospital

## UT Southwestern

- World class research institution
  - 6 Nobel Laureates who conducted award-winning research at UTSW (3 currently on faculty)
- Among the longest standing PID fellowship programs in the country
  - >106 fellows from 29 countries
- Opportunities in clinical, translational, basic science, public health and community-based research
- Fellowship clinical service
  - 2 inpatient services (General and Immunocompromised Host)
  - HIV, Congenital ID, Transplant outpatient clinics
- Funding for 3 years
- Opportunities for intramural research funding
- Up to 4 weeks of elective time



# Pediatric Infectious Diseases Fellowship – University of Utah



## Program Directors

- Sonia Mehra (PD)
- Anne Blaschke (APD)

## Faculty

- Andy Pavia (Division Chief)
- Krow Ampofo
- Emily Thorell
- Adam Hersh
- Beth Knackstedt
- TW Jones
- Nicole Pershing
- Mary Fortini
- Susana Keeshin
- Russ Osguthorpe

## Fellows

- Marilyn Valentine (Yr 3)
- Lauren Lajos (Yr 2; Global Health)
- Ben McMillion (Yr 1)

## Program Specifics

- Clinical time spread over 3 years
- All 3 years of fellowship are funded
  - Applying for funding encouraged
- Global Health Track Available
- Post Fellowship Training Available
  - Immunocompromised Host
  - Medical Microbiology (ARUP)

## Significant Areas of Expertise

- Antibiotic Stewardship
- Immunocompromised Host
- Advanced Diagnostics
- Global Health

## Other Important Information

- Top 10 Children's Hospital
- On-site Microbiology Laboratory
- Collaboration with ARUP
- Active involvement with ASP and development of guidelines
- Integrated healthcare system
- Membership in multi-site collaboratives

## Program Culture

- Collaborative culture includes faculty and fellows
- Culture of inquiry and discussion – there are no dumb questions
- Fellows are encouraged to pursue their own interests
- Support for fellows is provided by all faculty

## Institution Culture

- Institution encourages collaboration across Divisions and Departments
- Institution is supportive of families
- Institution is supportive of interests outside of work
- The Institution has many DEI initiatives

## Geographic area/Culture

- Salt Lake City sits at the foot of the Wasatch Mountain Range, providing opportunity for many outdoor activities
- Salt Lake City is within 1 day drive of 12 National Parks
- Salt Lake City has a thriving arts culture, including Broadway Theater, Symphony and Ballet
- The population of Salt Lake City is ethnically and socioeconomically diverse





# Department of Pediatrics

University of Wisconsin School of Medicine and Public Health

## Pediatric Infectious Diseases Fellowship

**UWHealthKids**

American Family  
Children's Hospital

- **Jim Conway, MD**  
*Fellowship Program Director*
- **Tara Loether**  
*Program Coordinator*
- Bruce Klein, MD  
*Division Chief*
- Greg Demuri, MD
- Sheryl Henderson, MD/PhD
- Emma Mohr, MD/PhD
- Ellen Wald, MD
- Joe McBride, MD
- Kathryn Schmit MPH, MD
- Bryan Vonasek, MD
- Charles Hill, MD



Follow to learn more!  
@WiscPedsRes



### Program specifics

- Fellows may pursue their research in the ID division or across campus with world-class, mentoring faculty dedicated to advancing trainee career development.
- Tertiary care free-standing children's hospital opened in 2007
- Directly contiguous to world class UW hospital
- Diverse patient population
  - Care for children from 5 states
  - See patients at 2 nearby community hospitals to ensure broad experience
- Collaborative activities with UW adult ID and global health programs
- Proximity to WI State Health Dept and Laboratory of Hygiene, and State Capitol
- World-class university with research, education & clinical expertise
- NIH T32 supported Microbiology & ID training program

### About the Program

The training program is designed to allow fellows to collaboratively pursue their individual interests - from arboviruses to zoonoses!

The program prides itself on being able to allow flexibility for trainees in choosing their career path.

### Institutional Culture

Our GME programs are consistently recognized for their ongoing strength and innovation, and we understand the power and value of diversity. We've developed programs and protocols within our GME programs to ensure we are moving forward and building inclusive work and health care environments.

### Geographic Culture

A vibrant, picturesque city with a population just over 250,000, Madison is the state capital and the home of the University of Wisconsin. While boasting many big city amenities, Madison is an easy city – commutes are short, incredible arts, sports, dining and outdoor opportunities

<https://www.pediatrics.wisc.edu/education/fellowship-programs/infectious-diseases-fellowship/>





VANDERBILT  
UNIVERSITY  
MEDICAL  
CENTER

## THE PROGRAM

- Clinical training in a large, tertiary care, free-standing children's hospital consistently ranked as the #1 children's hospital in the southeast by US News and World Report
- Two inpatient services: General Pediatric ID and Immunocompromised Host Service
- Two fellows per year
- A collaborative culture based on responsiveness to fellow feedback
- Recent graduates have been recruited to a wide array of positions, including CDC Epidemic Intelligence Service (3); physician-scientists; patient-oriented investigators; antimicrobial stewardship program leadership, and general infectious diseases
- The video linked here highlights some additional aspects of our program:

[Vanderbilt Pediatric Infectious Diseases](#)



## THE DIVISION

- Dedicated culture of mentorship and training
- Established faculty with national and international recognition in:
  - Vaccine development, clinical trials, and safety assessment (Kathryn Edwards, Natasha Halasa, Buddy Creech)
  - Antimicrobial and diagnostic stewardship (Ritu Banerjee, Sophie Katz)
  - Immunocompromised Hosts (Dan Dulek)
  - Bacteriology and Antimicrobial Resistance (Jim Cassat, Leigh Howard, Isaac Thomsen)
  - HIV and Global Health (Greg Wilson, Troy Moon)
  - Coronavirology (Mark Denison)
- Active collaborations and research opportunities with scientists across the globe, including Peru, UK, Argentina, Mozambique, Sierra Leone, and Jordan.



## THE CITY

- Multiple entertainment venues, greenways, and beautiful parks, including Warner Parks (3100 acres of forest and field)
- Professional sports including NFL (Titans), NHL (Predators), and MLS (Nashville SC).
- Ranked #1 on "America's Best Cities for Music Scenes," one of "20 Greenest Cities in America," and one of "America's Favorite Cities" (Travel and Leisure Magazine)
- New York Times named Nashville as "One of the Top Places that Young College Graduates are Choosing to Live."
- Zagat named Nashville "One of the Most Exciting Food Cities in America."







# Washington University in St. Louis

## SCHOOL OF MEDICINE

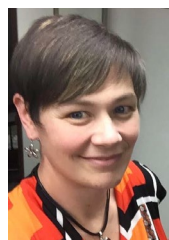
### Pediatric Infectious Diseases



David Hunstad, MD  
Division Chief



S. Celeste Morley, MD, PhD  
Stephanie Fritz, MD, MSCI  
Program Co-Directors



Emily Strong  
Program Coordinator

#### Clinical Excellence

Clin Micro Lab

Outpatient ID

Scholarly Activity

Inpatient: Gen ID

Inpatient:  
Immunocompromised ID

Year 1

#### Personalized Career Development

##### CLINICAL & BASIC RESEARCH

Institute for Clinical & Translational Sciences (certificate/degree programs)  
Microbiology  
Immunology  
Infectious Diseases

##### HOSPITAL LEADERSHIP

Antimicrobial Stewardship  
Infection Prevention

##### EDUCATION & ADVOCACY

The SPOT - Supporting Positive Outcomes in Teens  
Institute for Public Health  
Center for Global Health  
Resident and Medical Student Education

Inpatient: Gen and Immuno-ID

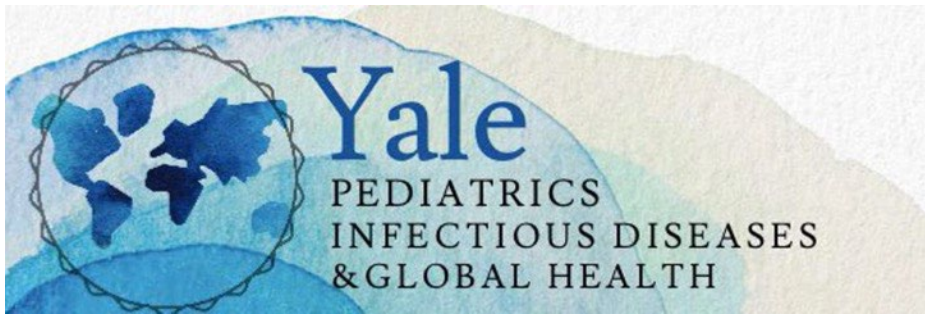
Years 2-3

diverse  
family academic  
innovative  
mentorship **thrive**  
opportunity supportive  
collaborative

....our fellows







E. Paintsil, E. Zirinsky, L. Emuren, E. Taylor Salmon, E. Shapiro, C. Oliveira, T. Murray, C. Miller. (not pictured, I. Ildirim, M. Cappello, M. Vazquez, G. Miller)

### Contact information

**Program Coordinator:** Sue Prisley, [susan.prisley@yale.edu](mailto:susan.prisley@yale.edu)  
**Program Director:** Thomas Murray MD PhD, [thomas.s.murray@yale.edu](mailto:thomas.s.murray@yale.edu)  
**Section Chief:** Elijah Paintsil MD, [elijah.paintsil@yale.edu](mailto:elijah.paintsil@yale.edu)

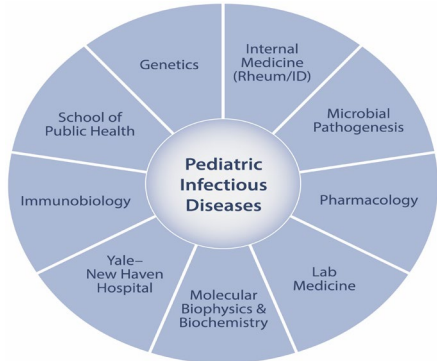
<https://medicine.yale.edu/pediatrics/sections/infectious-diseases/education/>

### Our program

- Typically, 1 fellow/year
- T-32 training available
- Clinical training  
Immunosuppressed/transplant patients, HIV, Tb, COVID-19, antibiotic stewardship, infection prevention.

### Unique Opportunities

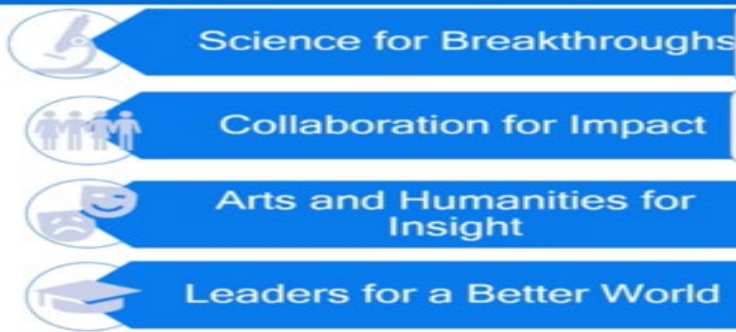
- PhD Investigative Medicine Program
- Fellows As Medical Educators
- Masters in Health Science
- Yale Center for Clinical Investigation
- Institute for Global Health
- Global Health & Research
- Diverse mentors and collaborators



### Program Culture



### Institution Culture - Yale School of Medicine



### New Haven, Connecticut

