



ASSOCIATION
OF PEDIATRIC
PROGRAM
DIRECTORS

Innovate. Inspire. In-Person.



APPD 2022 Spring Meeting

May 16 - 19, 2022

Sheraton San Diego Hotel & Marina

Program Schedule

www.appd.org



Program Schedule

Times listed in Pacific Time Zone. All meetings are held in the Marina Tower at the Sheraton San Diego Hotel & Marina

Monday, May 16, 2022

6:00am - 11:30pm	Mother's Room	<i>Lowtide</i>
7:30am - 6:30pm	Registration Open	<i>Seascape Foyer</i>
7:30am - 9:00am	LEAPES Graduation Breakfast (invitation only)	<i>Sandpiper Salon C/D</i>
7:30am - 12:15pm	LEAD Cohort Meeting (invitation only)	<i>Sandpiper Salon A/B</i>
8:00am - 12:00pm	APPD Board of Directors Meeting (invitation only)	<i>Sanderling</i>
8:00am - 5:00pm	Chief Residents' Forum Chief Residents' Forum Breakout for Graduating Chiefs	<i>Silver Pearl Ballroom 2,3</i> <i>ShoreBreak 1,2</i>
10:00am - 5:00pm	Coordinators' Session	<i>Pacific Jewel Ballroom A</i>
12:30pm - 4:30pm	CoPS Meeting (invitation only)	<i>Tidepool 2</i>
12:00pm - 5:00pm	APPD AIMS Program (invitation only)	<i>Seaglass</i>
3:00pm - 4:30pm	Grassroots Forum for Vice Chairs of Education	<i>Sandpiper Salon A/B</i>
4:00pm - 5:00pm	APPD SPIN Meeting	<i>Driftwood</i>
5:00pm - 6:00pm	APPD Leadership Reception (invitation only)	<i>Sandpiper Salon C/D</i>
6:00pm - 7:00pm	Welcome Reception (all registered attendees)	<i>Eventide Gardens</i>

Tuesday, May 17, 2022

6:00am - 11:30pm	Mother's Room	<i>Lowtide</i>
6:30am - 6:00pm	Registration Open	<i>Seascape Foyer</i>
7:00am - 8:00am	Wellness Activity: Yoga	<i>Lanai Lawn</i>
7:00am - 8:00am	Continental Breakfast	<i>Eventide Gardens</i>
7:15am - 7:45am	New Member, First Timers Welcome Session	<i>Silver Pearl Ballroom 1</i>
8:00am - 9:30am	Plenary Session I, APPD Update, ACGME/RC Update	<i>Pacific Jewel Ballroom A,B,C</i>
9:30am - 10:00am	Platform Presentations in Educational Scholarship	<i>Pacific Jewel Ballroom A,B,C</i>
10:00am - 10:15am	Coffee Break	<i>Pacific Jewel Foyer & Silver Pearl Foyer</i>
10:15am - 12:15pm	APPD Grassroots Forum for Chief Residents APPD Grassroots Forum for Coordinators APPD Grassroots Forum for Residency Program Directors	<i>Coral 4,5</i> <i>Coral 1,2,3</i> <i>Silver Pearl Ballroom 1</i>

Tuesday, May 17, 2022

10:15am - 12:15pm	APPD Grassroots Forum for Associate Program Directors APPD Grassroots Forum for Fellowship Program Directors	<i>Silver Pearl Ballroom 2,3 ShoreBreak 1,2</i>
12:30pm - 1:45pm	Region Leaders Luncheon (invitation only)	<i>Osprey</i>
12:30pm - 1:45pm	Council of Learning Communities (invitation only)	<i>Seaglass</i>
12:30pm - 1:45pm	Coordinators Networking Luncheon	<i>Eventide Gardens</i>
12:30pm - 1:45pm	Chief Residents Networking Luncheon	<i>Eventide Gardens</i>
12:45pm - 1:45pm	Facilitated Mentoring Luncheon/Session for Faculty	<i>Pacific Jewel Ballroom A,B,C</i>
2:00pm - 3:30pm	Enhanced Learning Session I	
DARE TO PAIR: PAIRING GOAL-SETTING AND EXPECTATIONS WITH FEEDBACK <i>Driftwood</i>		
EVIDENCE-BASED MINDFULNESS TECHNIQUES TO IDENTIFY AND MITIGATE BURNOUT <i>Sandpiper A/B</i>		
HOW TO ASSESS YOUR PROGRAM'S ANTI-RACISM EFFORTS <i>ShoreBreak 1,2</i>		
IS IT TIME TO DUST OFF PASSPORTS? CONSIDERATIONS FOR RESUMING GLOBAL HEALTH ELECTIVES FOR TRAINEES <i>Tidepool 2</i>		
MOVING BEYOND BASELINE REQUIREMENTS TO MAXIMIZE IMPACT – HOW BUILDING AN ACADEMIC COLLABORATIVE CENTERED AROUND ADVOCACY AND QUALITY IMPROVEMENT CAN GENERATE FACULTY DEVELOPMENT, RESIDENT LEARNING AND COMMUNITY PARTNERSHIPS <i>Coral 1</i>		
NOW YOU'RE TALKING: CLINICAL EVENT DEBRIEFING FOR THE GRADUATE MEDICAL EDUCATOR <i>Coral 3</i>		
PUTTING EMOTIONAL HEALTH ON THE [ROAD]MAP OF PEDIATRIC TRAINING <i>Coral 2</i>		
RECRUITING ALL SOCIAL MEDIATRICIANS: USING SOCIAL MEDIA FOR EDUCATION AND RECRUITMENT <i>Silver Pearl Ballroom 1</i>		
REFRAMING THE TRADITIONAL MORNING REPORT IN THE COGNITIVE SCIENCE OF LEARNING <i>Sandpiper C/D</i>		
RUNNING WITH THE RAT PACK: INNOVATIVE CURRICULAR DESIGN OF RESIDENT-AS-TEACHER PROGRAMS <i>Seaglass</i>		
SUPPORTING TRAINEES TO FIND PURPOSE AND PASSION: HARNESSING THE POWER OF PERSONAL DEVELOPMENT PLANS FOR CAREER AND WELL-BEING <i>Coral 4</i>		

Tuesday, May 17, 2022

YOU SHOULD WRITE THAT UP! DEVELOP A RECORD OF SCHOLARLY INQUIRY AND ACHIEVE ACADEMIC SUCCESS THROUGH PUBLISHING CASE REPORTS

Coral 5

3:30pm - 3:45pm

Coffee Break

Silver Pearl Foyer

3:45pm - 5:15pm

Enhanced Learning Session II

BEING OUR BEST SELVES IN A PANDEMIC ERA; THE TOTAL PERSONAL WELLNESS AND FINDING MEANING AT WORK PACKAGE

Coral 3

BETTER TOGETHER: INTEGRATING INTERPROFESSIONAL EDUCATION INTO YOUR RESIDENCY PROGRAM

Seaglass

CHOOSE YOUR COMMUNICATION ADVENTURE: USING INTERACTIVE MODALITIES TO TEACH CULTURAL HUMILITY AND COMMUNICATION SKILLS WITH LGBTQ+ PATIENTS AND FAMILIES

Coral 1

HIGH YIELD - LOW STAKES: USING TABLETOP SIMULATION TO DIAGNOSE THE STRUGGLING LEARNER

ShoreBreak 1,2

HOW TO USE A SCHOLARLY APPROACH TO BUILD NOVEL LONGITUDINAL CURRICULA FOR YOUR PROGRAM

Sandpiper C/D

IMPLEMENTING A CLIMATE CHANGE CURRICULUM INTO PEDIATRIC TRAINING: CURRENT STATE AND BEST PRACTICES

Tidepool 2

LIKE A FLY IN THE BUTTERMILK? HOW TO FOSTER CROSS-CULTURAL AND RACIAL CONNECTIONS IN MENTORING RELATIONSHIPS

Driftwood

MANO A MANO: HOT TOPICS IN MEDICAL EDUCATION

Silver Pearl Ballroom 2,3

NOT THROWIN' AWAY MY SHOT: RECOGNIZING AND SEIZING THE TEACHABLE MOMENT

Coral 4

PUT ME IN, COACH: SKILL DEVELOPMENT FOR COACHING TRAINEES IN CAREER DEVELOPMENT

Sandpiper A/B

RESPONDING TO A NATIONAL MENTAL HEALTH CRISIS: A CURRICULUM FOR TRAINING PEDIATRICIANS IN SUICIDE PREVENTION

Coral 5

USE OF TECHNOLOGY TO MAXIMIZE LEARNING

Coral 2

5:30pm - 6:30pm

Poster Session I

Eventide Pavilion

6:30pm - 7:30pm

UIM Chief Resident, AIMS, and FUEL Reception (invitation only)

Garden Terrace

Wednesday, May 18, 2022

6:00am - 11:30pm	Mother's Room	<i>Lowtide</i>
6:30am - 5:30pm	Registration Open	<i>Seascape Foyer</i>
7:00am - 8:00am	Wellness Activity: "Hip Hop with a Doc" <i>instructed by Tyree Winters, DO, FACOP</i>	<i>Coral Foyer</i>
7:00am - 8:00am	Continental Breakfast	<i>Eventide Gardens</i>
8:00am - 9:00am	Plenary Session II, APPD Presidential Address	<i>Pacific Jewel Ballroom A,B,C</i>
9:00am - 9:30am	Platform Presentations in Quality Improvement	<i>Pacific Jewel Ballroom A,B,C</i>
9:30am - 9:45am	Coffee Break	<i>Pacific Jewel Foyer</i>
9:45am - 11:15am	Table to Able Session	<i>Pacific Jewel Ballroom A,B,C</i>
11:30am - 12:45pm	Regional Lunch & Networking Meetings Mid-America Region Mid-Atlantic Region Midwest Region New York Region Northeast Region Southwest Region Southeast Region Western Region	<i>Eventide Gardens</i> <i>Sandpiper A/B</i> <i>Silver Pearl Ballroom 2</i> <i>Eventide Gardens</i> <i>Sandpiper C/D</i> <i>ShoreBreak 1,2</i> <i>Silver Pearl Ballroom 3</i> <i>Silver Pearl Ballroom 1</i>
1:00pm - 2:30pm	Enhanced Learning Session III	
<p>"THIS IS THE PART WHERE YOU GET STRONGER!" WHAT PELOTON TEACHES US ABOUT INTEGRATING GROWTH MINDSET INTO CLINICAL TEACHING AND COACHING</p> <p>Osprey</p>		
<p>A WORK IN PROGRESS: HOW DO WE PROGRESS FROM DIVERSITY TO INCLUSION?</p> <p>ShoreBreak 1,2</p>		
<p>BUILDING TRUST INTO YOUR PROGRAM: A PRACTICAL GUIDE TO IMPLEMENTING EPA'S (ENTRUSTABLE PROFESSIONAL ACTIVITIES)</p> <p>Silver Pearl Ballroom 1</p>		
<p>COACHING 101: EXPLORING THE WHO, WHAT, WHERE, WHEN, HOW AND WHY OF CLINICAL COACHING PROGRAM DEVELOPMENT</p> <p>Coral 2</p>		
<p>COMBINING THE BEST APPROACHES FROM DEBRIEFING & FEEDBACK MODELS USING THE LEARNING CONVERSATIONS FRAMEWORK TO IMPROVE CLINICAL SKILL PERFORMANCE</p> <p>Sandpiper A/B</p>		
<p>DON'T LOSE YOUR MIND--MENTAL HEALTH CURRICULUM FOR GENERAL PEDIATRICS</p> <p>Coral 1</p>		

Wednesday, May 18, 2022

GETTING 'CLER' ABOUT HEALTHCARE DISPARITIES

Coral 5

HOLISTIC APPLICATION REVIEW - BUILDING A PROCESS THAT REFLECTS YOUR VALUES AND VISION

Coral 4

LET'S CHALK ABOUT IT- CREATING EFFECTIVE CHALK-TALK TEACHING SESSIONS FOR THE VIRTUAL ENVIRONMENT

Driftwood

MENTORSHIP MYTHBUSTERS: STRATEGIES FOR AVOIDING MENTORING MISHAPS AND SUCCEEDING AS A MENTOR AND MENTEE

Seaglass

ON MY OWN, PRETENDING YOU'RE BESIDE ME: SUPPORTING RESIDENT AND FELLOW AUTONOMY IN PEDIATRICS

ShoreBreak 1,2

TALK STORY: TRANSFORM YOUR LEADERSHIP SKILLS FROM GAPS TO STRENGTHS

Sandpiper C/D

2:30pm - 2:45pm	Coffee Break	Silver Pearl Foyer
2:45pm - 4:15pm	APPD Learning Community Meetings Assessment Learning Community Behavioral & Mental Health Learning Community Advocacy & LGBTQ+ Learning Community Curriculum Learning Community Educational Technology Learning Community Faculty & Professional Development Learning Community Healthcare Simulation Learning Community Pediatric Global Health Educators Learning Community Research and Scholarship Learning Community Underrepresented in Medicine Learning Community	Sandpiper A/B Coral 4 Sandpiper C/D Silver Pearl Ballroom 1 Coral 1 Silver Pearl Ballroom 2 Coral 2 Osprey ShoreBreak 1,2 Silver Pearl Ballroom 3
4:30pm - 6:00pm	Poster Session II	Eventide Pavilion
6:00pm - 7:00pm	LEAD Reunion (<i>invitation only</i>)	Shoreline Catina
6:00pm - 7:00pm	LEAPES Reunion (<i>invitation only</i>)	Harbor Vista Lawn

Thursday, May 19, 2022

6:00am - 11:30pm	Mother's Room	Lowtide
7:00am - 12:00noon	Registration Open	Seascape Foyer
7:00am - 7:30am	Continental Breakfast	Eventide Gardens
7:30am - 8:30am	Plenary Session III, ABP Update	Pacific Jewel Ballroom A,B,C
8:30am - 9:00am	Platform Presentations in Educational Scholarship	Pacific Jewel Ballroom A,B,C

Thursday, May 19, 2022

9:00am - 9:15am	Coffee Break	<i>Pacific Jewel Foyer</i>
9:15am - 10:45am	Enhanced Learning Session IV	
<p>“NO MORE CAMERA ON/OFF DILEMMA IN LEARNER ENGAGEMENT”: KEY CONCEPTS AND PRACTICAL STRATEGIES TO CREATE AN ACTIVE LEARNING</p> <p>Silver Pearl Ballroom 2,3</p>		
<p>“SO WHAT DO WE DO NOW?”: MOVING FROM AN ANTI-RACISM CURRICULUM TO AN ANTI-RACIST WAY OF BEING</p> <p>Seaglass</p>		
<p>BUILDING A SOGI-CREATIVE LEARNING SPACE</p> <p>Driftwood</p>		
<p>FROM INDIVIDUAL TO ORGANIZATIONAL RESILIENCY: WHAT ANY PROGRAM DIRECTOR CAN DO</p> <p>ShoreBreak 1,2</p>		
<p>HEALTH EQUITY FOR ALL: A HEALTH EQUITY AND SOCIAL DETERMINANTS OF HEALTH CURRICULUM FOR TRAINEES</p> <p>Coral 4</p>		
<p>MAKING THE MOST OUT OF THE NEW APPD NUTS & BOLTS: FACULTY DEVELOPMENT FOR THE BUSY CLINICAL EDUCATOR SERIES</p> <p>Coral 1</p>		
<p>QI MY LIFE</p> <p>Coral 2</p>		
<p>USING RESTORATIVE JUSTICE PRACTICES TO BUILD COMMUNITY AND FIGHT BURNOUT IN YOUR RESIDENCY PROGRAM</p> <p>Coral 3</p>		
<p>VULNERABILITY AS A VALUE: STRATEGIES FOR MODELING VULNERABILITY FOR INDIVIDUALS AND PROGRAMS</p> <p>Coral 5</p>		
11:00am - 12noon	<p>Closing Session</p> <p>Wellbeing with Stuart Slavin, MD, MEd, Senior Scholar for Well-being, Accreditation Council for Graduate Medical Education (ACGME)</p>	<i>Pacific Ballroom A,B,C</i>

Save the Dates!

APPD 2022 Annual Fall Meeting

October 13 - 14, 2022

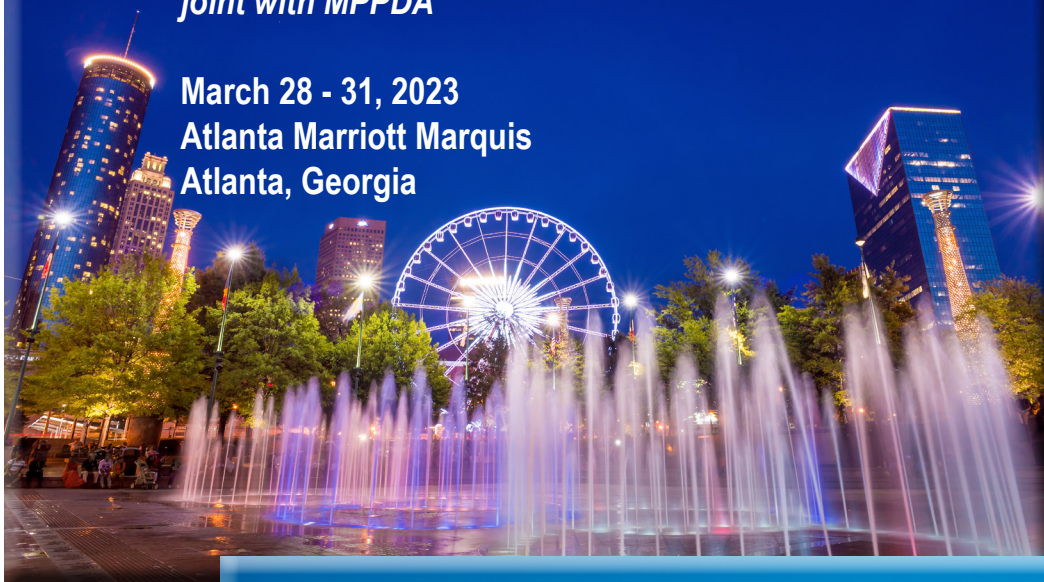
Renaissance Arlington Capital View Hotel
Arlington, Virginia



APPD 2023 Annual Spring Meeting *joint with MPPDA*

March 28 - 31, 2023

Atlanta Marriott Marquis
Atlanta, Georgia



APPD 2023 Annual Fall Meeting

September 21 - 22, 2023

Renaissance Arlington Capital View Hotel
Arlington, Virginia

