



**Training
Administrators
of
Graduate
Medical
Education**



TAGME GROWTH 2003-2008

TAGME Beginnings

- How did TAGME start?
- National board established in 2003 as a result of high level of interest from program coordinators/administrators across the nation and from many clinical specialties
 - 9 founding specialties represented
 - Orthopedic Surgery, Pediatrics, Family Medicine, OB/GYN, Psychiatry, Emergency Medicine, Diagnostic Radiology, Internal Medicine

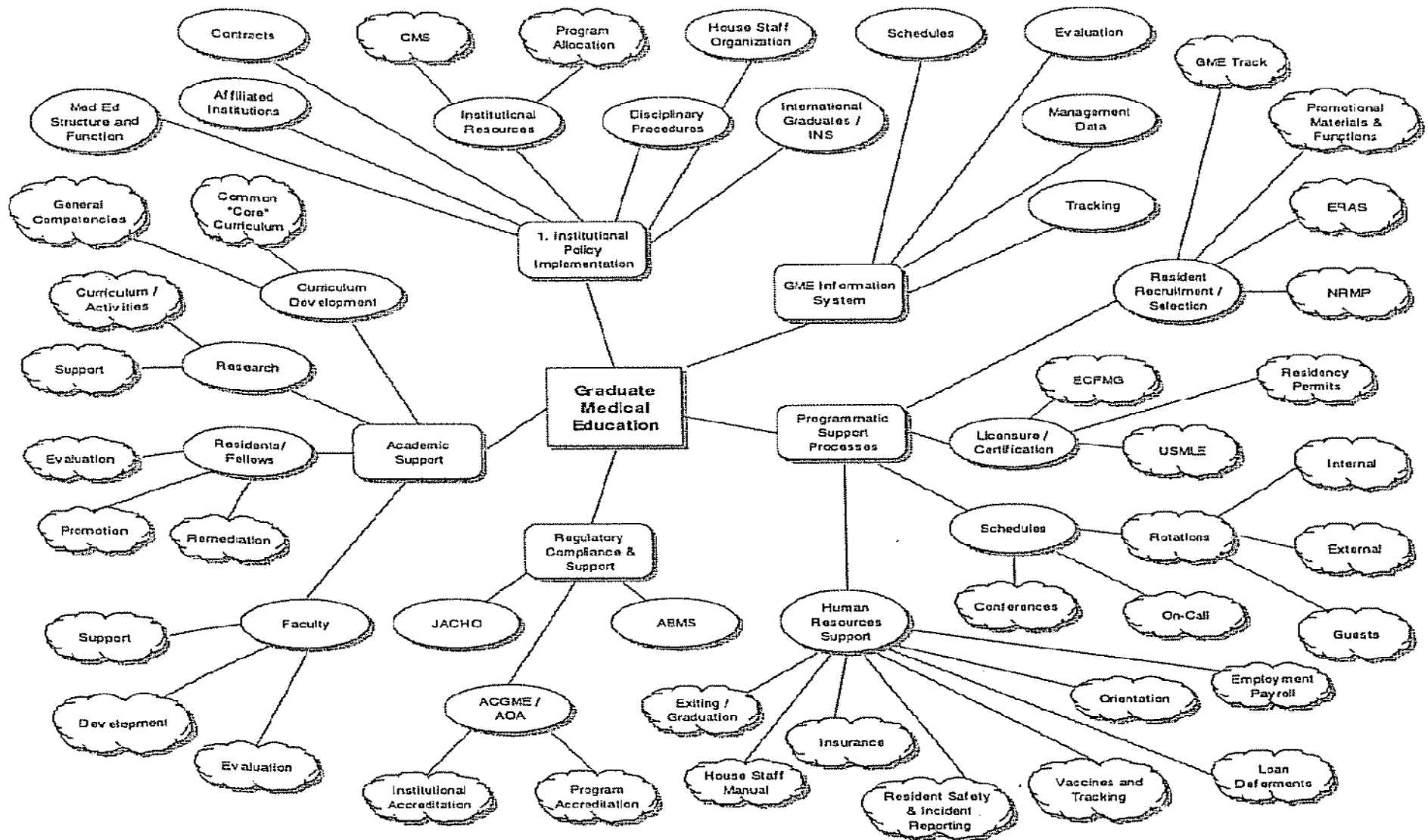
Mission

To assure a comprehensive level of services, training, knowledge and leadership through certification of the administrators of graduate medical education programs for physicians-in-training.

Why certification?

- Need to meet increased changes in RC requirements related to the 1999 Outcome Project, Accreditation and Duty Hours regulations.
 - **Not a secretary/clerk any more!**
- Need for GME training administrators to maintain a high level of knowledge and skills to effectively manage the day-to-day activities of the training program.
- Need to create a national standard and means of recognition for GME training administrators.

The Simplicity of GME



Criteria for certification

1. Years of on-the-job experience

- 3 continuous years in the same clinical specialty

2. National Meeting Attendance

- 1 meeting in 5 years
- Focus of meeting must be graduate medical education

3. Site Visit/Internal Review

- Participate in either a site visit or internal review

Criteria for certification

4. Personal Professional Development

- 2 professional development experiences in 5 years
 - Oral or poster presentations
 - Abstracts and/or publications
 - Participation/leadership in national organizations with the profession
 - Participation/leadership in department/institution committees
 - Department presentations such as orientation and in-service training sessions on program procedures for attendings and/or residents

4. Certification Assessment Tools

- **Assessment Tools are composed of 2 distinct parts:**
 - **Work Effort Tool**
 - **Timed, Monitored Assessment**

Study Guides? Textbooks?

There are no study guides or books to read. Knowledge of the day-to-day management of a residency program is a major part of preparation for certification.

- **Resources:**

- ACGME Common Program Requirements
- ACGME Institutional Requirements
- ACGME Program Requirements
- ACGME Glossary of Terms

- **Open Book:** candidates must bring copies of the above ACGME documents to the assessment site to provide citations in support of answers

Maintenance of Certification

Activity	Required Criteria
National/Regional Conferences whose focus is Graduate Medical Education	2 in 5 years
Institution/Department Committee participation	1 per year
Other personal professional development activities: <ul style="list-style-type: none"> ◆ Oral or poster presentations; ◆ GME related workshop attendance; ◆ Publications; ◆ Committee leadership; ◆ Participation on a national or regional level committee; ◆ Continuing education courses (e.g. online professional modules such as SoftSkills, or institutional based life learning courses); and ◆ Higher education courses. 	3 in 5 years
Successful completion of clinical specialty Maintenance of Certification Tool	Successful completion

Progress...

How is TAGME *doing?*

ACGME Accredited Programs

Offering

Developing

Forming

Neurology
Obstetrics & Gynecology
Orthopaedic Surgery
Pediatrics
Psychiatry
Psychiatry: Child/Adolescent
Physical Medicine & Rehabilitation
Surgery
Surgery: Vascular Surgery
Diagnostic Radiology
Emergency Medicine
Neurological Surgery
Pediatrics: Neonatology
Family Medicine
Internal Medicine

Ophthalmology
Otolaryngology
Combined Med-Peds
Urology
Allergy & Immunology
Anesthesiology
Colon & Rectal Surgery
Dermatology
Medical Genetics
Nuclear Medicine
Plastic Surgery
Pathology
Preventive Medicine
Radiation Oncology
Thoracic Surgery
Transitional Year

Progress...

So far so good, but...

6. Future Expansion Growth

- Surveying for interest
 - AOA
 - Dental
 - Canadian residency coordinators
 - GME

Pediatrics 2005-2007 3 Year Statistics

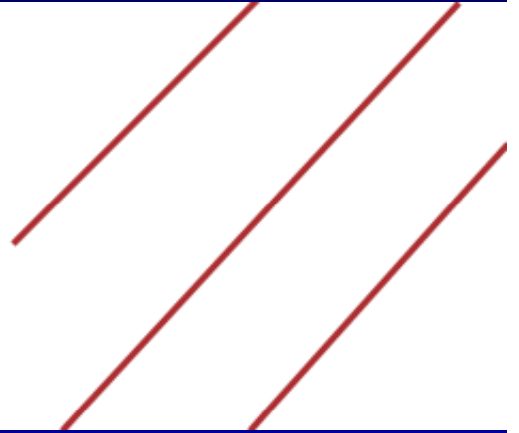
- 37 Total Candidates
- 30 Certified Coordinators
- 81% Pass Rate

"When you reach for the stars you may not quite get one, but you won't come up with a handful of mud either."

Leo Burnett



**Training
Administrators
of
Graduate
Medical
Education**



Thank you!